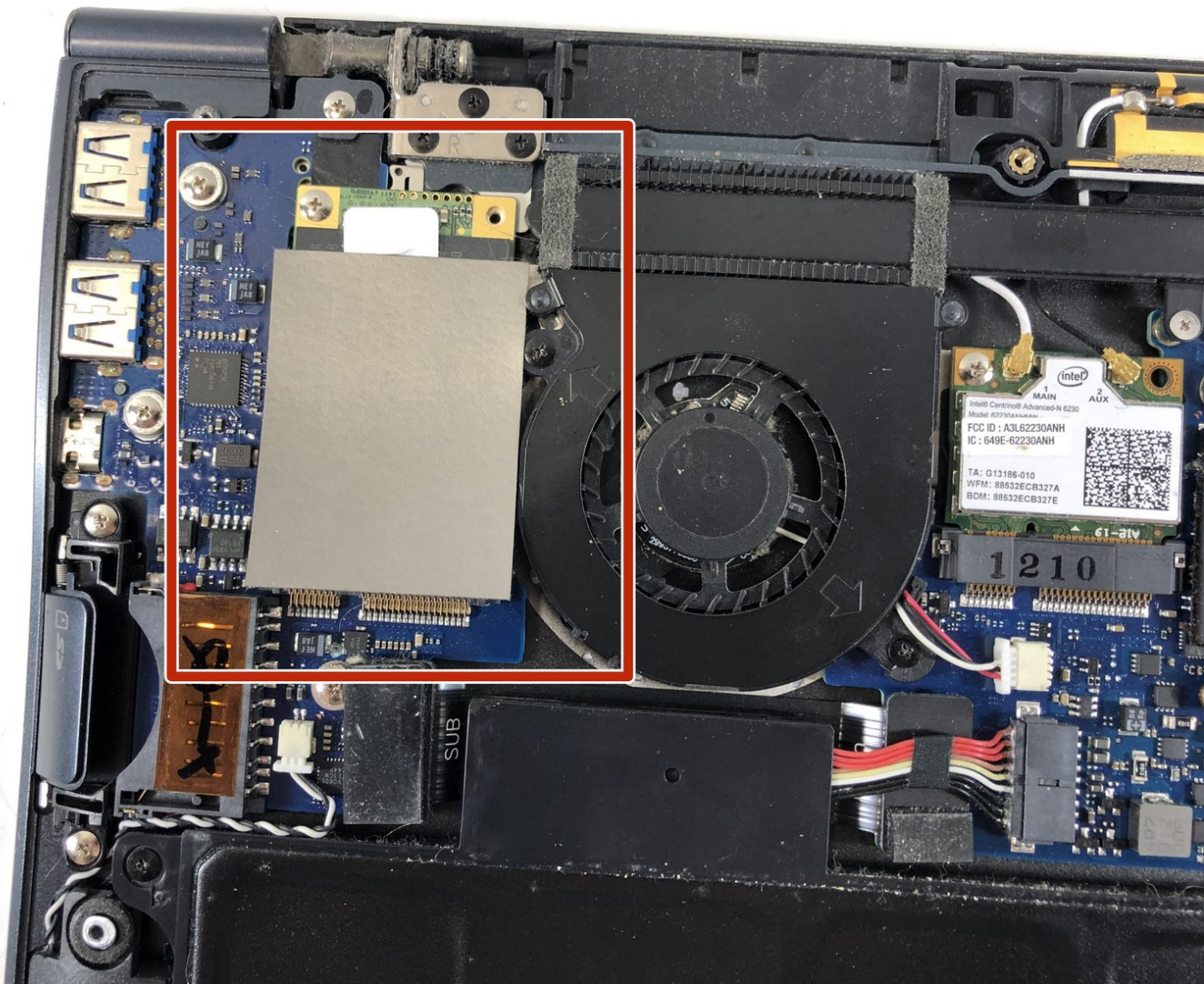




Samsung NP900X4B SSD Hard Drive Replacement

This guide will demonstrate the steps involved in replacing the Hard Drive on the Samsung NP900X4B laptop.

Written By: Bryton Lawrence



INTRODUCTION

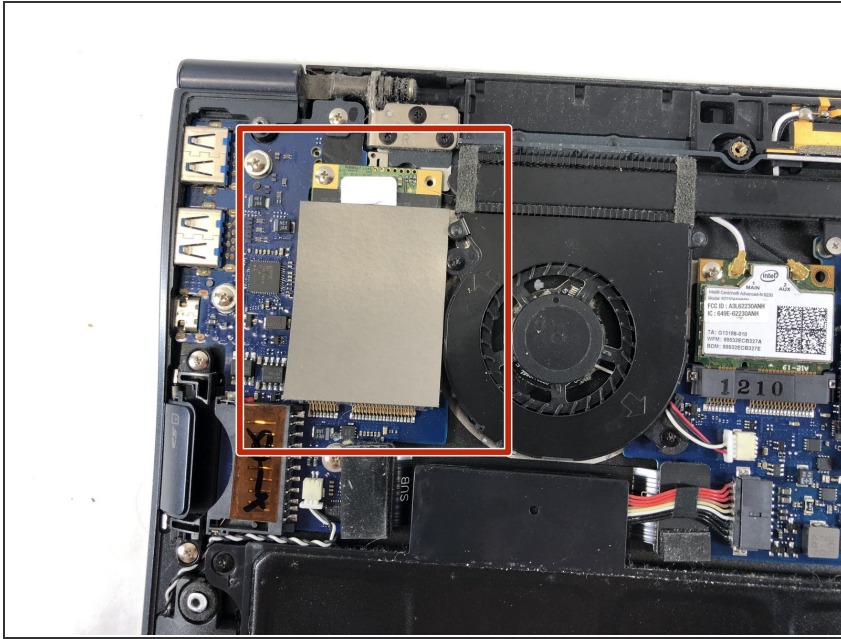
This guide will give a step by step walk through on how to replace the hard drive of a Samsung NP900X4B Laptop. Before replacing the hard drive make sure the device is unplugged and turned off as a safety step.



TOOLS:

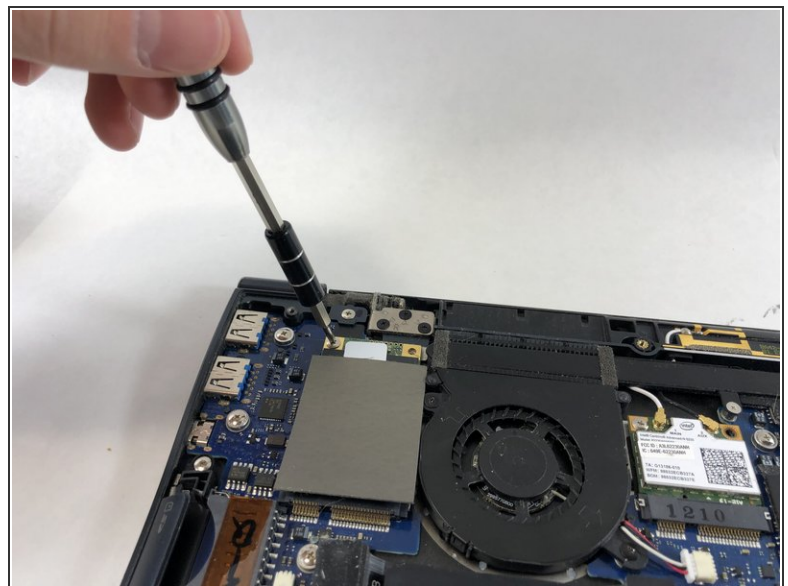
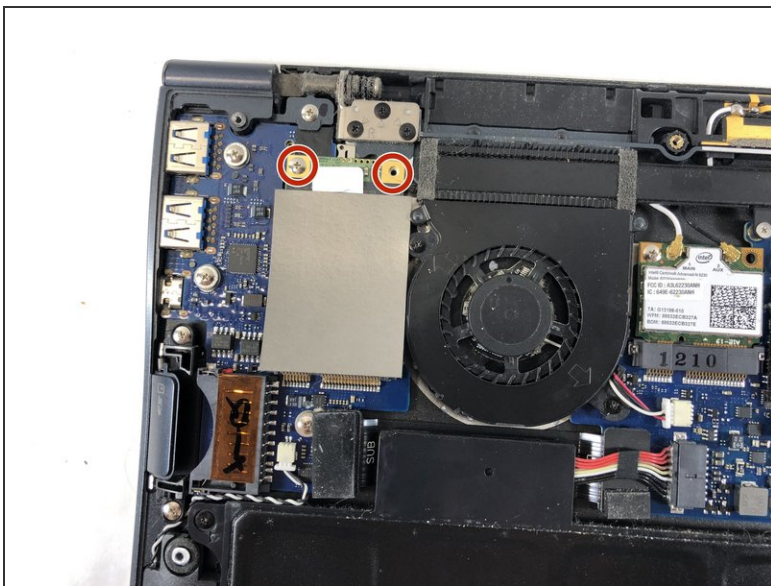
- [Phillips #000 Screwdriver](#) (1)
 - [iFixit Opening Tools](#) (1)
-

Step 1 — SSD Hard Drive



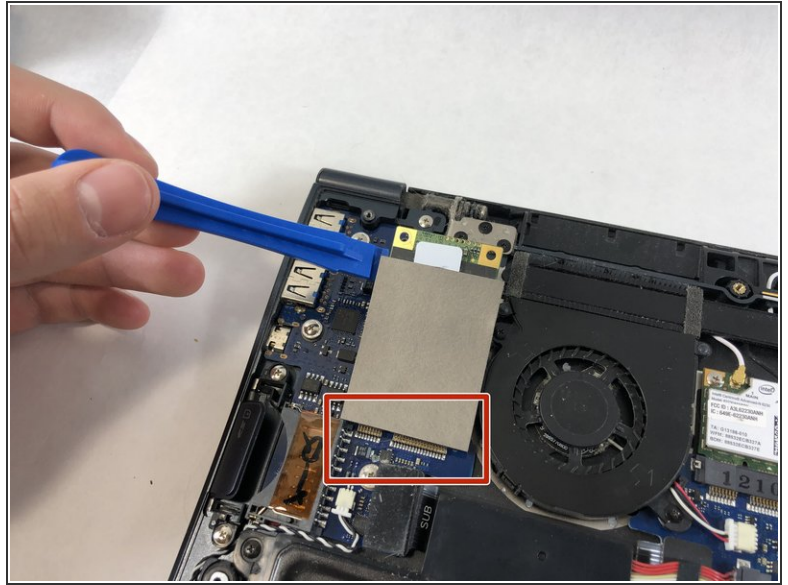
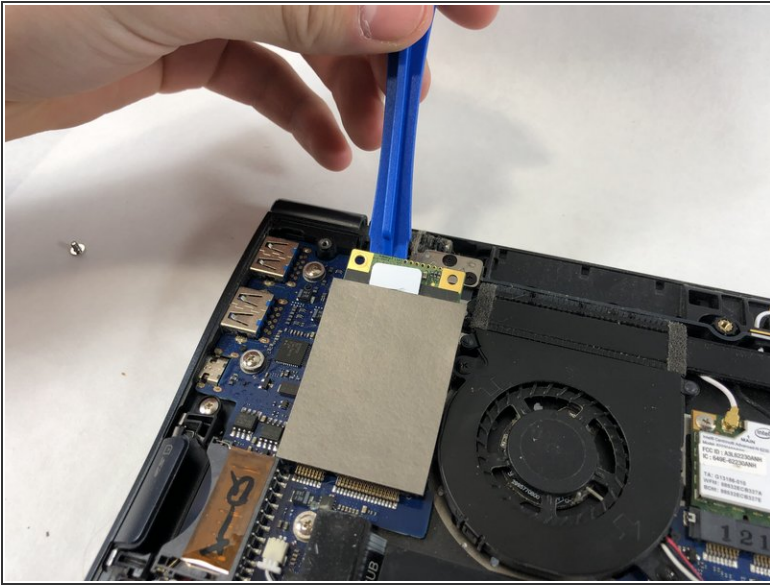
- Before beginning you must remove the back panel of the laptop. The Battery Removal guide demonstrates how to do this. The link to this guide is posed here. [Samsung NP900X4B Battery Replacement](#)
- Once this is completed, use this image to locate the Hard Drive. It can be found in the upper left hand corner of the device.

Step 2



- Remove the two 2.5mm Phillips #000 screws at the top of the SSD.

Step 3



- Gently lift up from the top of the SSD card using a plastic opening tool.
 - Pull gently away from the drive slot located at the base of the SSD.
- ✦ After removing the SSD memory chip, carefully insert the new SSD into the old slot. When completed, reinsert the two screws. Then, slowly remove the heat tape from the old SSD and apply to the new SSD.

To reassemble your device, follow these instructions in reverse order.