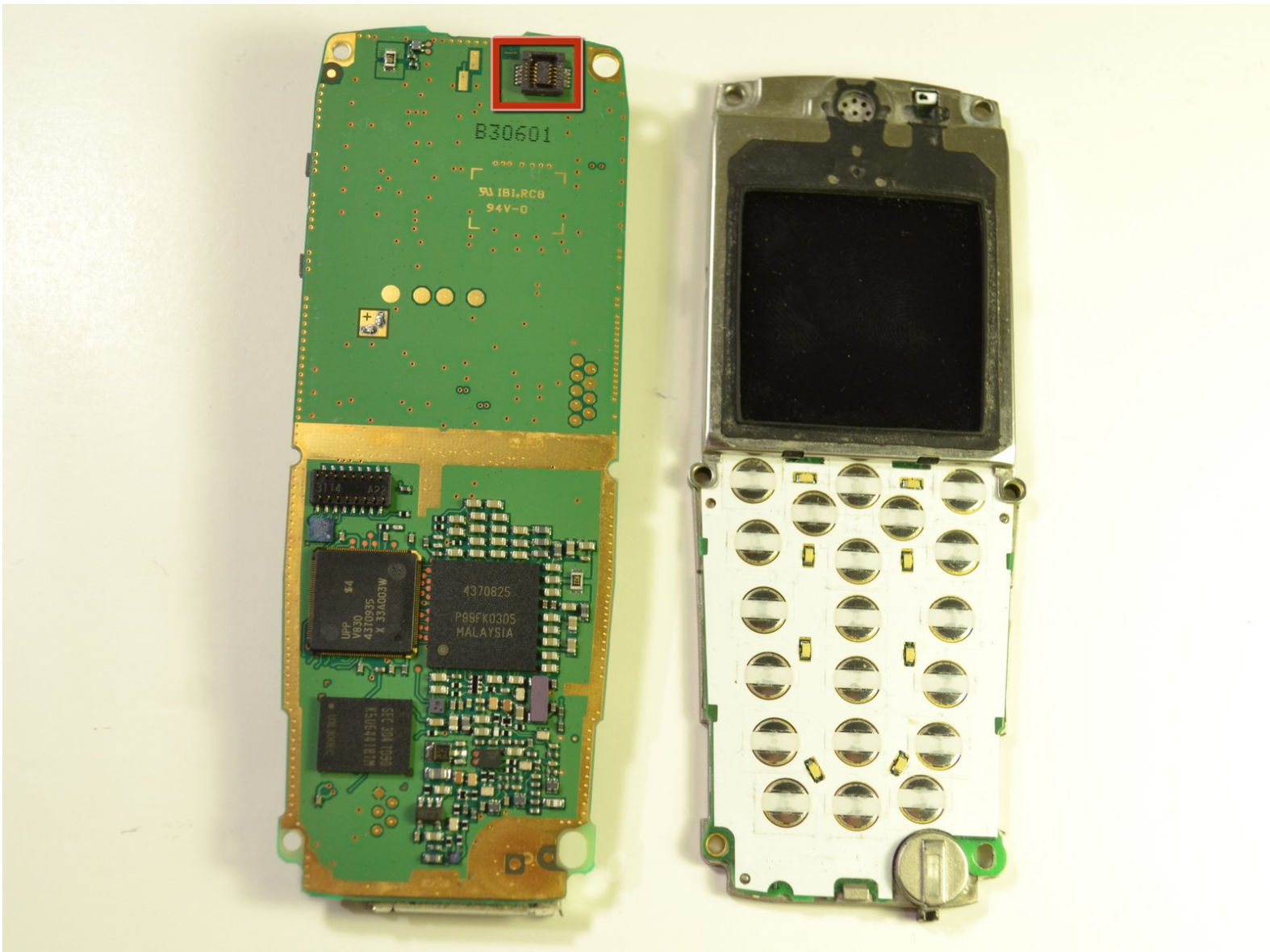




# Nokia 6200 Classic Circuit Board Replacement

This guide shows how to remove the circuit board from the rest of the phone.

Written By: Reid Polstra



---

## INTRODUCTION

This guide requires that the front plate and keypad already be removed. You will have to remove 6 screws and separate the circuit board from the rest of the phone.

---

### TOOLS:

- [Phillips #00 Screwdriver](#) (1)
-

## Step 1 — Front Plate



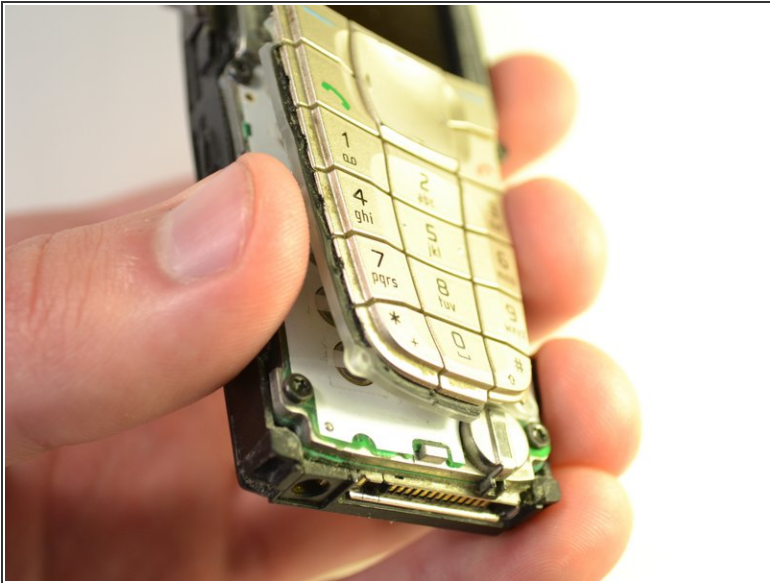
- Pull up on both of the clips near the bottom of the phone as shown.
- Lift off the front plate.

## Step 2



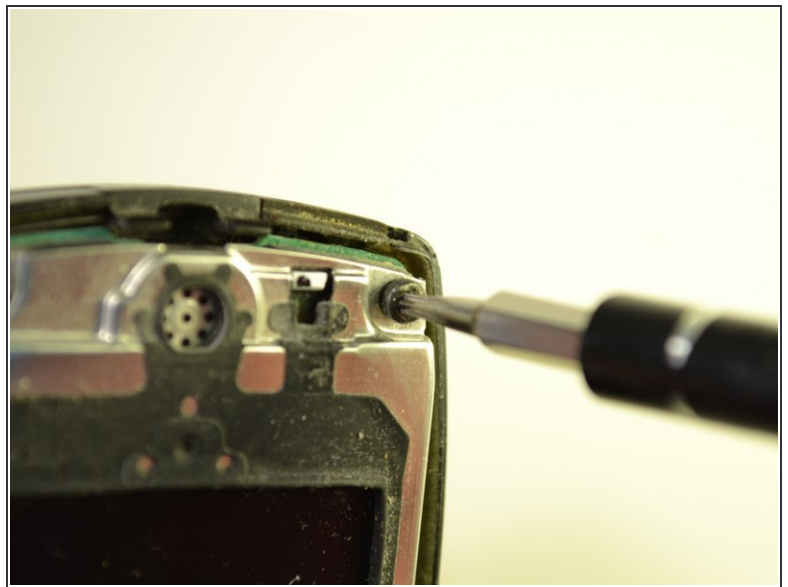
- The keypad and LCD screen are revealed.

### Step 3 — Circuit Board



- Separate the keypad from the phone and place aside.
- Wipe off any excess dust from where the keypad was attached to the phone.

### Step 4



- Remove the 6 - 7.9 mm screws highlighted by the markers using the T-6 head on the screwdriver.

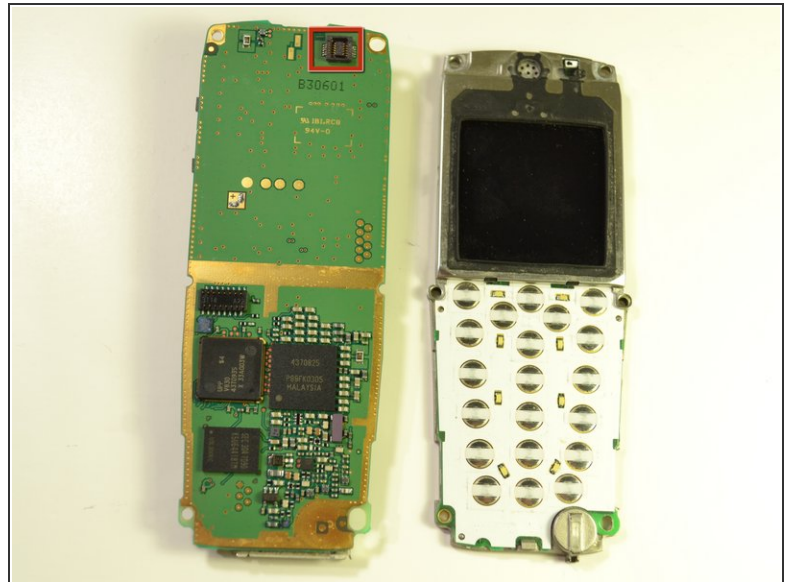


## Step 5



- Separate the inside of the phone from the back of the phone.

## Step 6



- Gently pull apart the circuit board from the rest of the phone.

⚠ There is a small connector holding these two pieces together, so use caution when pulling apart so as not to damage it.

To reattach the circuit board, line up the connector at the top of the board with the back of the LCD Screen attachment. Place the two boards together, and screw in the 6 screws.