



DJI Phantom 4 Advanced Remote Controller Back Panel Replacement

Use this guide to replace the back con board of...

Written By: cade knott



INTRODUCTION

Use this guide to replace the back con board of a DJI Phantom 4 Advanced Remote Controller.

With step by step detailed instructions, you will be able to safely resolve issues that may arise with the back con board.



TOOLS:

Spudger (1)
Tweezers (1)
TR8 Torx Security Screwdriver (1)
Phillips #0 Screwdriver (1)



PARTS:

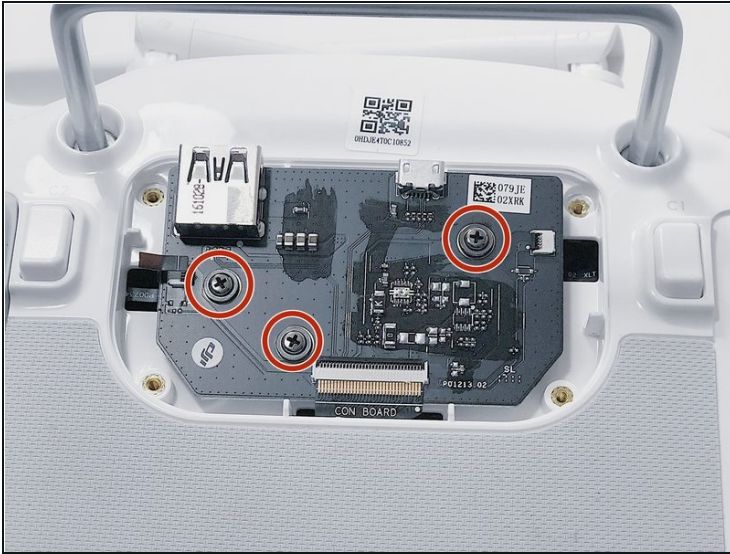
DJI Phantom 4 Advanced Remote
Controller Lower Shell (1)

Step 1 — Back Panel



- Remove the four screws with a Torx T8 screwdriver to access the back con board.

Step 2

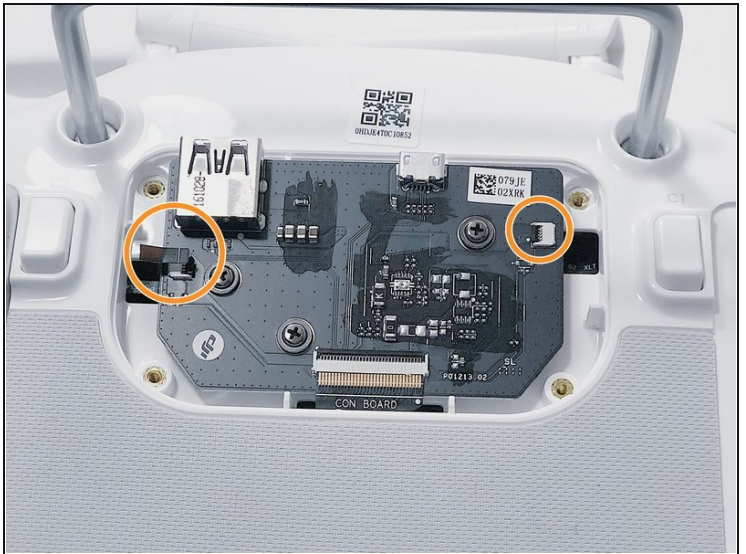
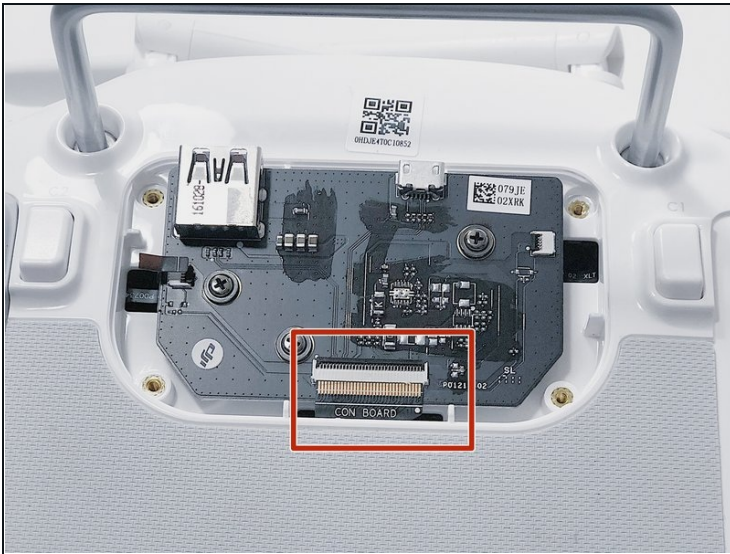


Phillips #00 screwdriver.



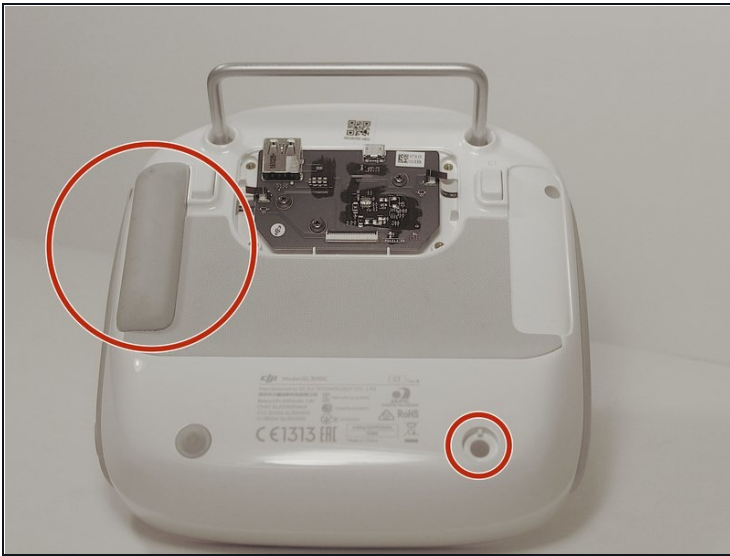
- Remove three screws using a Phillips #00 screwdriver.

Step 3



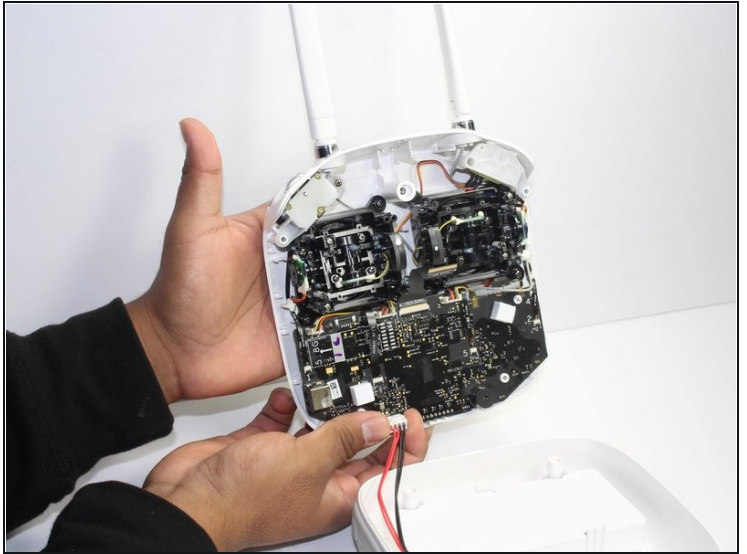
- With [tweezers](#), gently remove the large con board tab.
- Use your hands to remove the two small clips. Pull out from the socket, in a horizontal direction.

Step 4



- Peel off the rubber grips to access the screw holes.
- ⚠ Make sure to save your grips and do not to get them stuck to anything, you are going to want to save the adhesive.
- Remove the back board and set it aside.

Step 5



- Pull apart the back plastic panel.
 - ① Recommended tool for this would be the metal spudger, but not required.
 - Once the back panel is off, you will have access to the motherboard.
-

To reassemble your device, follow these instructions in reverse order.