



HP Mini 210-2070NR Keyboard Replacement

This is a step by step guide showing how to install a new keyboard.

Written By: Sean Kuster



INTRODUCTION

Use this guide to remove and install a new keyboard as a whole.



TOOLS:

- [Phillips #00 Screwdriver](#) (1)
 - [iFixit Opening Tools](#) (1)
-

Step 1 — Battery and Service Access Cover



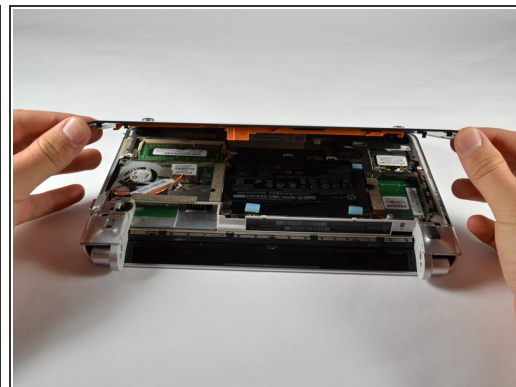
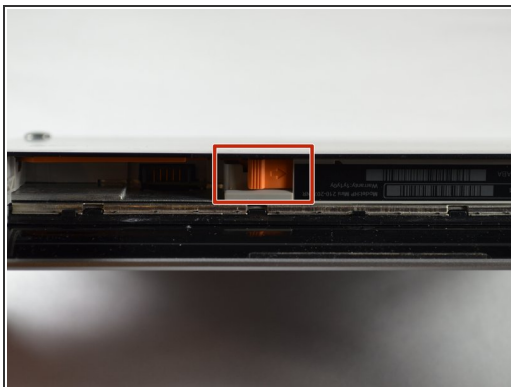
- i** Before beginning, make sure that your computer is turned off and all external power cords are disconnected.
- Close the laptop and turn it over so that the underside is up and the silver battery bay is facing towards you.

Step 2



- The battery locking latch is on the bottom right corner; slide it inward to unlock the battery.
- Slide the battery release latch inwards.
- Pull the battery towards you to remove it.

Step 3



- Slide the service access cover release lever to the right.
- While holding the lever to the right, lift up the laptop's bottom cover gently and remove the cover.

Step 4



- Orient the computer as shown in the picture.

Step 5 — Keyboard




- Using a 00 Phillips screwdriver, unscrew and remove the three 2.0 X 5.0 screws that connect the keyboard to the computer.
- ❗ Each of the screws are labeled with small keyboards next to them.
- Flip the computer over so that the front is facing you.

Step 6



- Open the computer screen as far as possible. It should be able to lay flat on whatever surface you are working on.
- Pry along the rear edge of the keyboard away from the PC with the plastic opening tool.
- Once enough of an opening has been established, gently grasp the edge and pull the keyboard towards you.

 There is a cable connecting the keyboard to the laptop, so do not attempt to fully remove the keyboard yet or you will damage your device.

Step 7



- Use your fingernail to flip up the black retaining flap attached to the keyboard ZIF connector.
- Pull the keyboard cable out of its socket to disconnect it.

Step 8



- Remove the keyboard by lifting it away from the computer.

To reassemble your device, follow these instructions in reverse order.