



# MSI GP60 2PE Leopard Wireless Card Replacement

A step by step guide for replacing wireless card.

Written By: Zoey Calcagno



---

## INTRODUCTION

Is your wireless card not working? Here's a guide to replace it. Make sure you follow each step accordingly and carefully replace the wireless card.



### TOOLS:

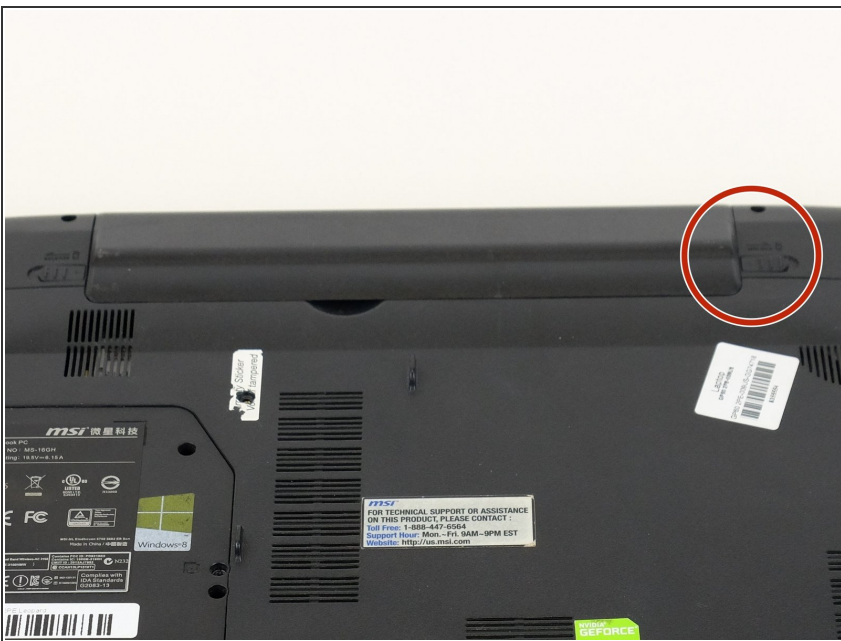
- [Phillips #00 Screwdriver](#) (1)
-

## Step 1 — Battery



- Flip MSI GP60 2PE Leopard, so that the back is facing up.

## Step 2



- Find the unlock tab located on the upper right side of the device, then slide it to the right.

## Step 3



- Slide and hold the release tab on the left side of the battery, so that you can remove the battery.

## Step 4



- While holding the release tab, remove the battery slowly.



## Step 5 — Back Panel



- Flip the device over so the back is facing up.

## Step 6



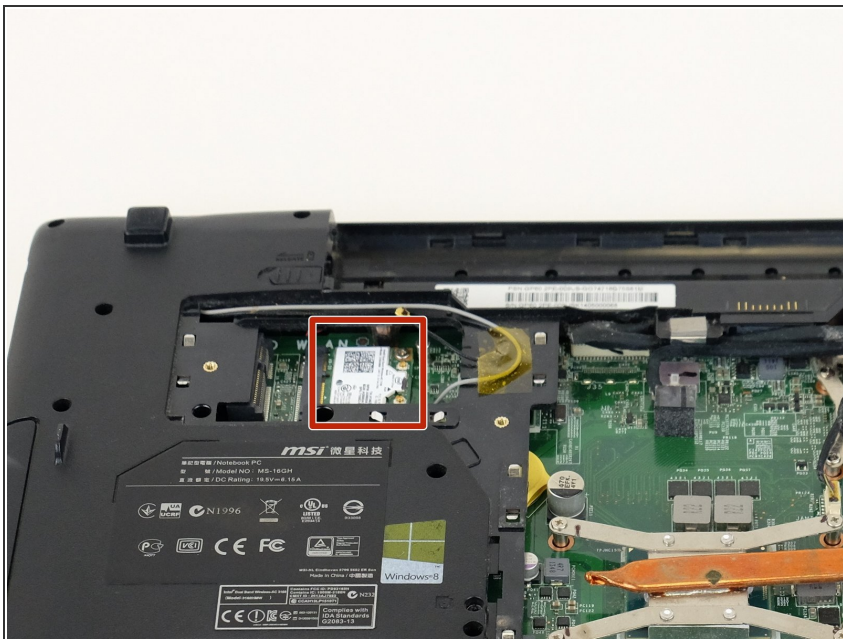
- Remove the four 5mm screws from the back of the device using a Phillips #00 screwdriver.
- ⓘ There is a screw located under the battery; lift the battery up to access it.

## Step 7



- Once all four screws are removed, lift the back off.

## Step 8 — Wireless Card



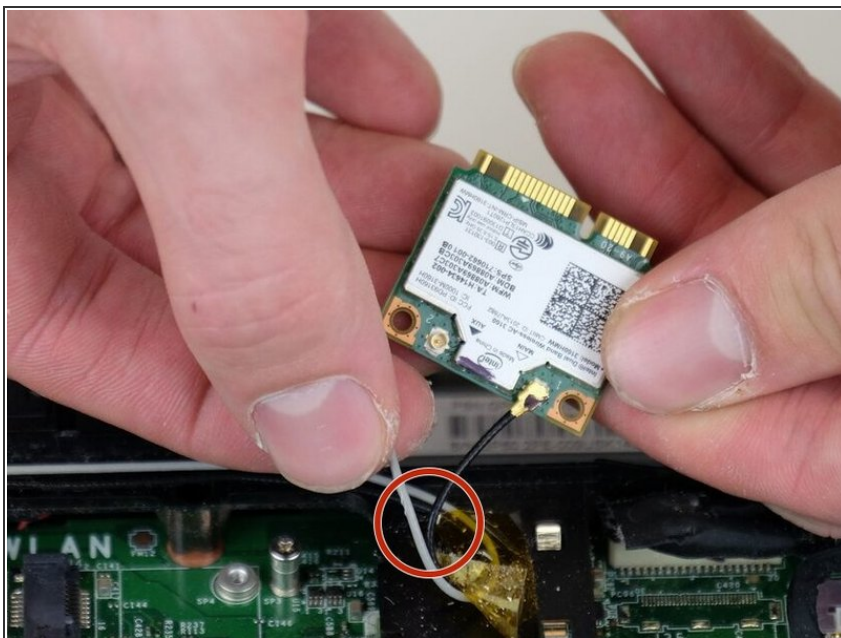
- Locate the wireless card.

## Step 9



- Using a Phillips #00 screwdriver, remove the one 2 mm screw that is holding the wireless card in place.

## Step 10



- Carefully remove the wireless card.
- ⚠ Pay close attention to the two wires attached to wireless card.



## Step 11



- Remove the wires connecting to the wireless card by pinching around the base where they connect, then carefully disconnect them.
- ⓘ The wires should come off fairly easily.
- ⚠ Avoid yanking or pulling too hard. This can result in the wires breaking.

To reassemble your device, follow these instructions in reverse order.