



# HP Mini 210-2070NR Hard Drive Replacement

This a step by step guide showing how to replace your hard drive.

Written By: Alek Linquist



---

## INTRODUCTION

Use this guide to remove and install a new hard drive.



### TOOLS:

- [Phillips #00 Screwdriver](#) (1)
-

## Step 1 — Battery and Service Access Cover



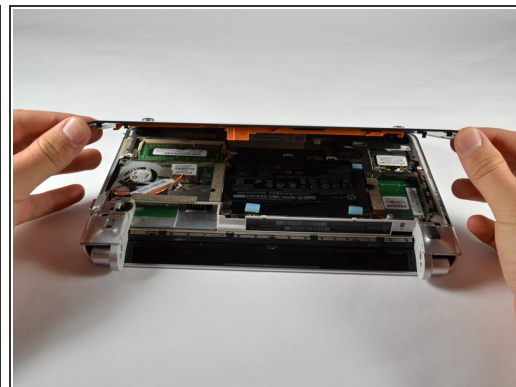
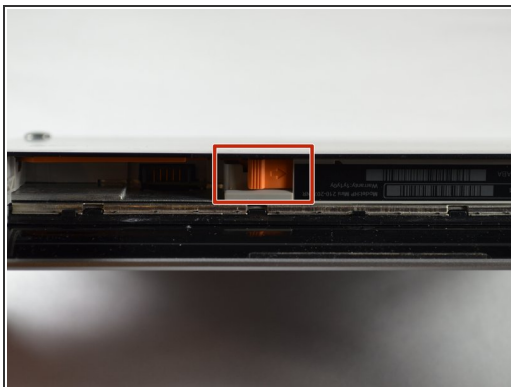
- i Before beginning, make sure that your computer is turned off and all external power cords are disconnected.
- Close the laptop and turn it over so that the underside is up and the silver battery bay is facing towards you.

## Step 2



- The battery locking latch is on the bottom right corner; slide it inward to unlock the battery.
- Slide the battery release latch inwards.
- Pull the battery towards you to remove it.

## Step 3



- Slide the service access cover release lever to the right.
- While holding the lever to the right, lift up the laptop's bottom cover gently and remove the cover.

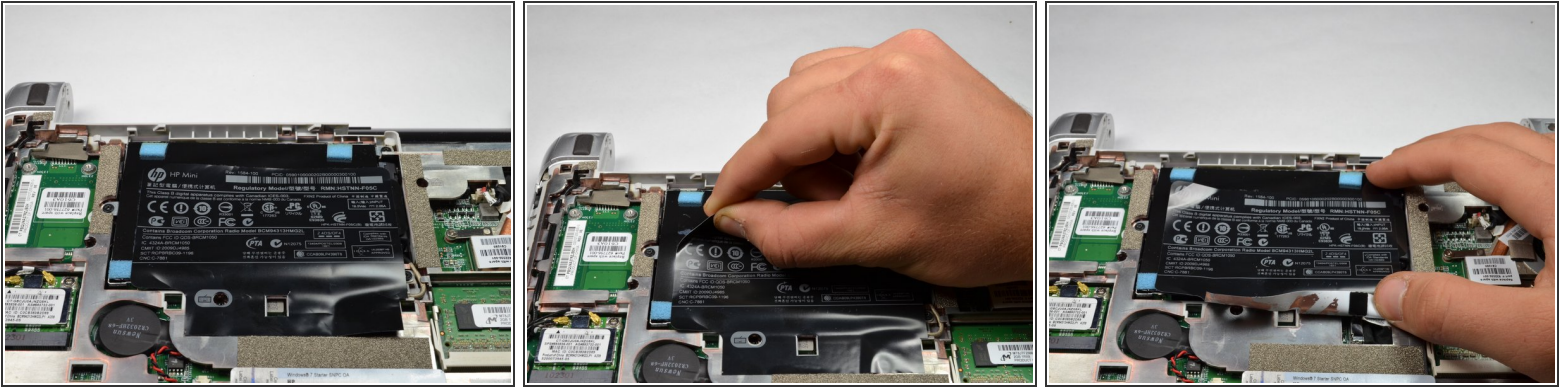
## Step 4



- Orient the computer as shown in the picture.



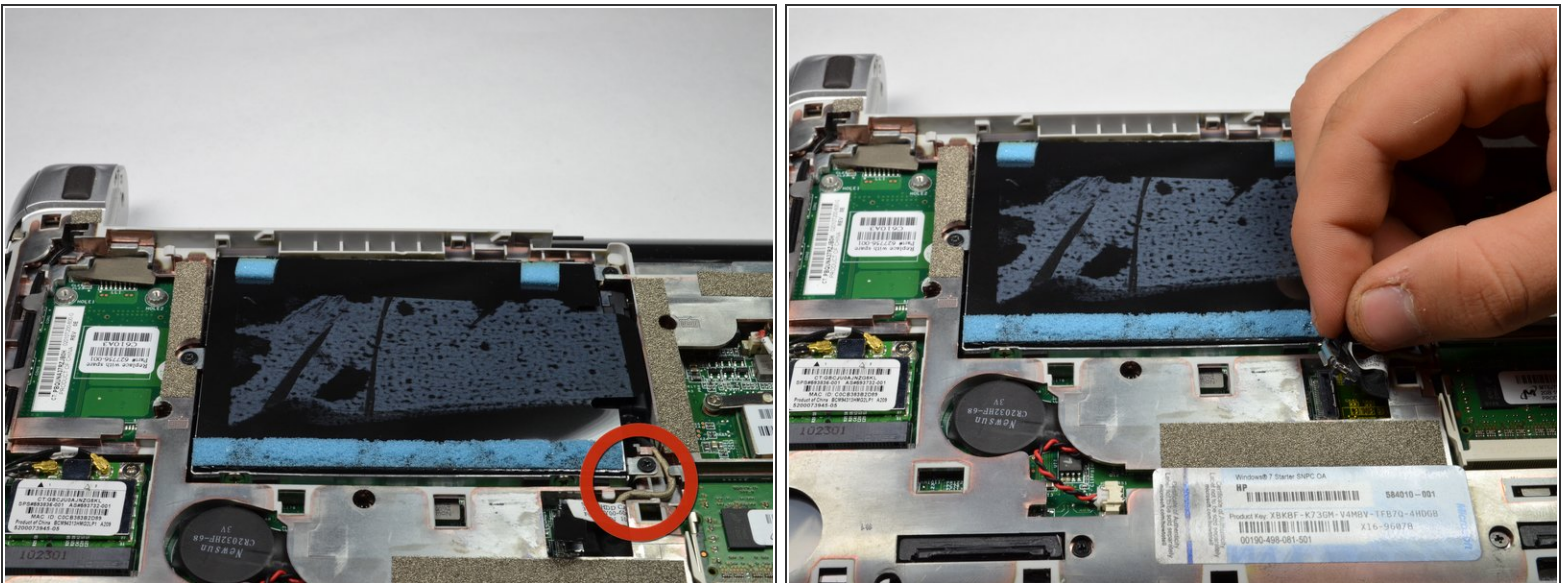
## Step 5 — Hard Drive



- Remove the HP product sticker.

⚠ Be careful not to pull up the black hard drive plastic connector with the sticker. Also, removing this sticker will void your warranty.

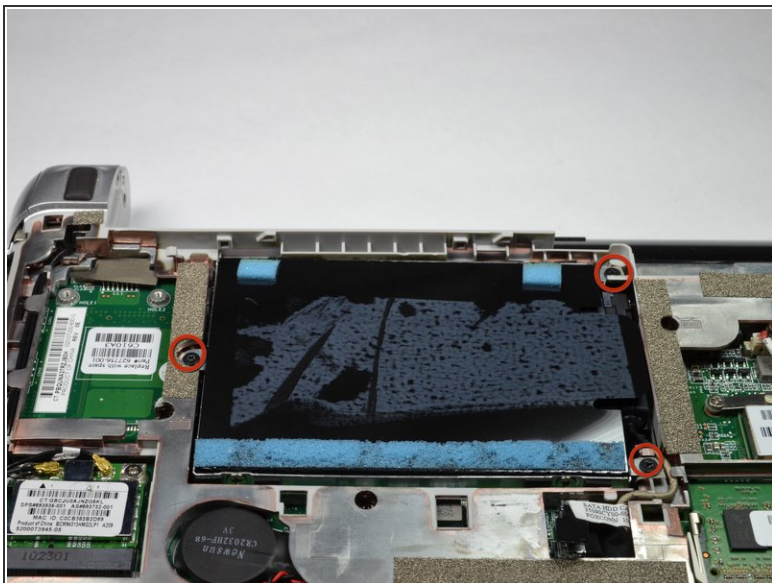
## Step 6



- Locate the hard drive, where the HP Product sticker used to be.
- Locate the hard drive cable, connected to the hard drive.
- Disconnect the hard drive cable by gently pulling upward.

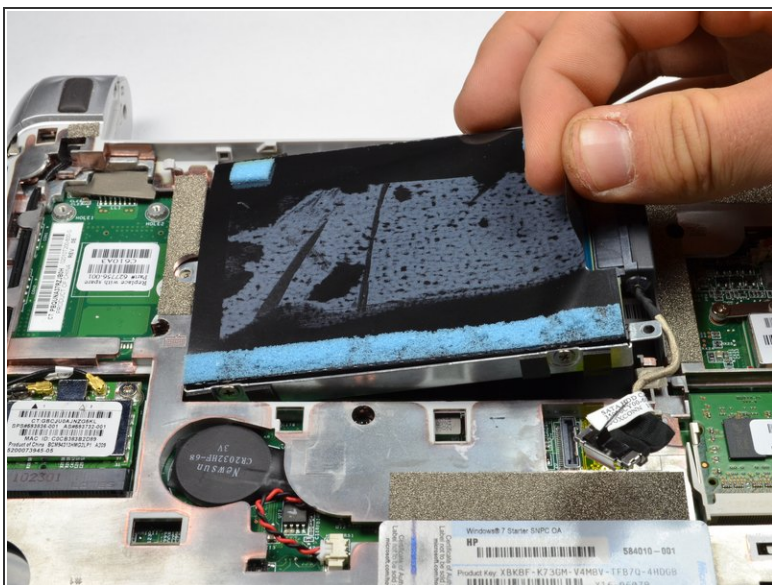


## Step 7



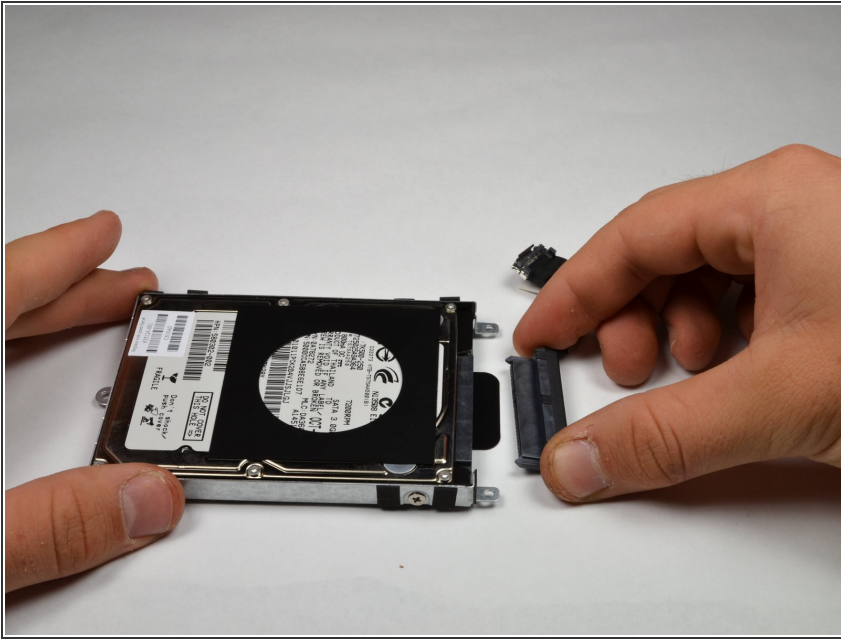
- Using a #00 Phillips screwdriver, unscrew and remove the three 2.0 x 4.0 Philips screws holding the hard drive in place.

## Step 8



- Use the Mylar Tab located on the right side of the hard drive to pry up the hard drive.
- Remove the hard drive.

## Step 9



- Lay the hard drive down with the underside facing up.
- Pull and remove the hard drive pin connector from the hard drive.

To reassemble your device, follow these instructions in reverse order.