



# Samsung NP350E5C-A02US Wifi card Replacement

How to replace a wifi card on your computer.

Written By: James Kingrey



---

## INTRODUCTION

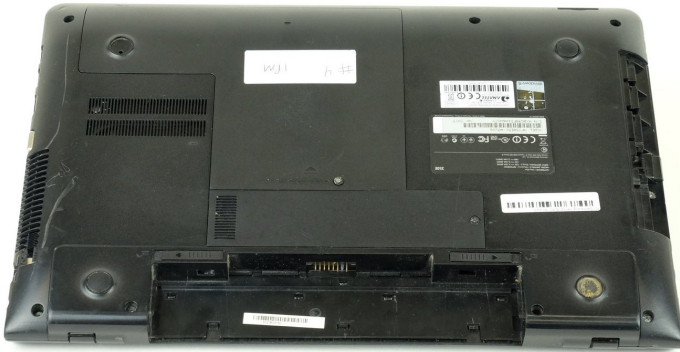
If you find that your laptop is having connection issues and isn't resolved after the given steps on the [troubleshooting page](#), then replace the Wifi card.

---

### TOOLS:

- [Phillips #1 Screwdriver](#) (1)
  - [iFixit Opening Tools](#) (1)
  - [Spudger](#) (1)
  - [Phillips #0 Screwdriver](#) (1)
-

## Step 1 — Battery



- Lay the laptop down so that the bottom is facing up.
- ⓘ There is no battery in the picture.

## Step 2



- Slide the two plastic tabs to the opposing sides.
- ⓘ There is no battery in the picture.

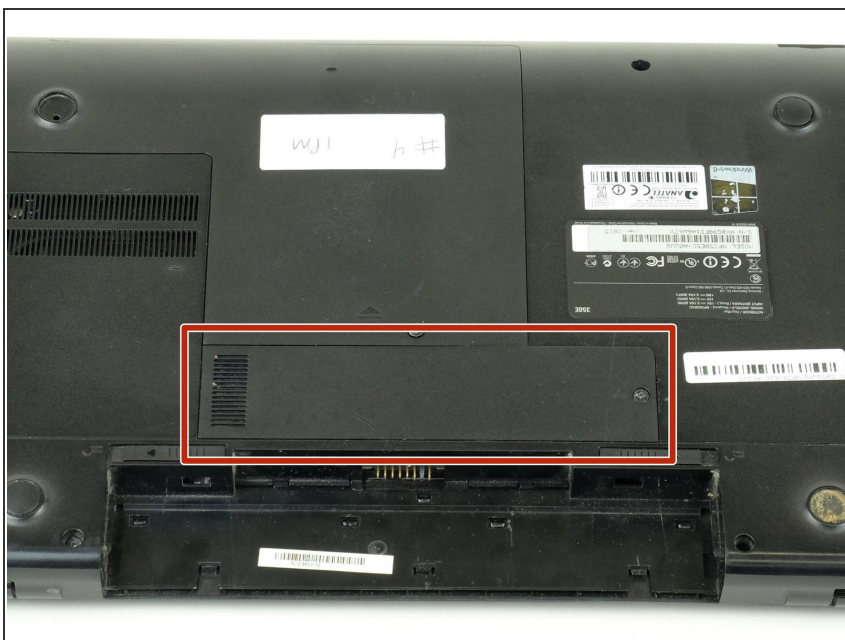
## Step 3



- While both are in the unlocked position, slide the battery out.

 There is no battery in the picture.

## Step 4 — Wifi card



- Look for the compartment with the Wifi symbol on it.

## Step 5



- Using a Phillips #1 screwdriver, remove the 5 mm screw located beside the Wifi symbol.

## Step 6



- Gently pry up cover using a plastic spudger or opening tool.



## Step 7



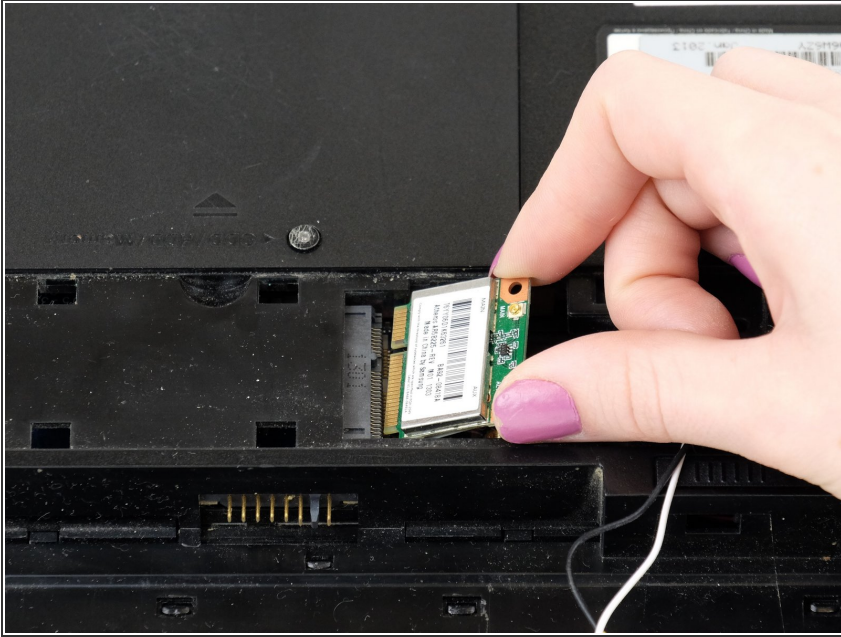
- Gently remove the two wires attached to the Wifi card by using a plastic opening tool or plastic spudger to pry up from under where the wire is attached.

## Step 8



- Using the Phillips #0 screwdriver, remove the M2.5x3 mm screw holding in the Wifi card.

## Step 9



- Gently pull out the Wifi card.

To reassemble your device, follow these instructions in reverse order.