



# MSI GP60 2PE Leopard RAM Replacement

Is your computer running slow, or do you need...

Written By: Zoey Calcagno



# INTRODUCTION

Is your computer running slow, or do you need more memory? Use this guide to replace the RAM in your device.

---

## TOOLS:

Phillips #00 Screwdriver (1)

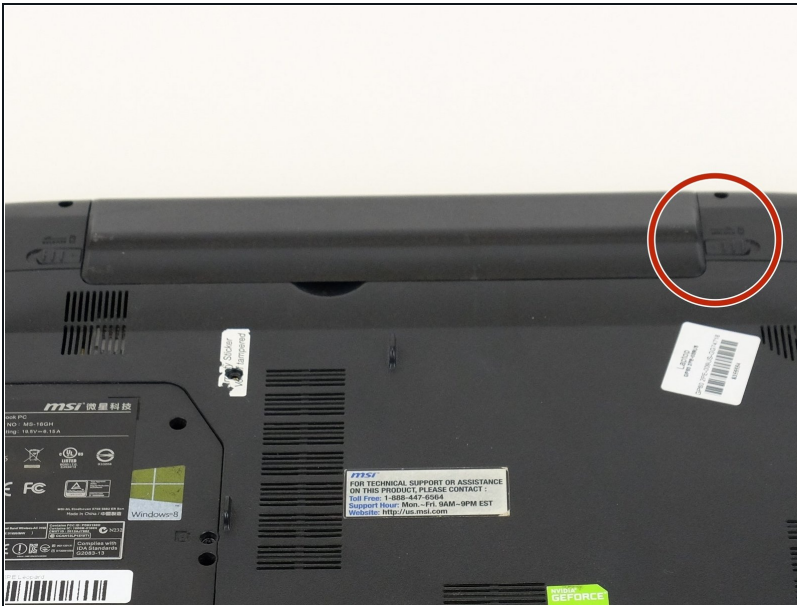
---

## Step 1 — Battery



- Flip MSI GP60 2PE Leopard, so that the back is facing up.

## Step 2



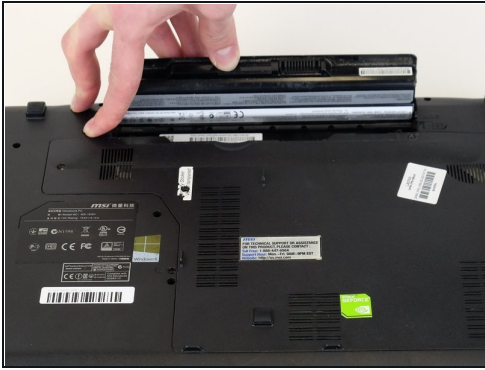
- Find the unlock tab located on the upper right side of the device, then slide it to the right.

## Step 3



- Slide and hold the release tab on the left side of the battery, so that you can remove the battery.

## Step 4



- While holding the release tab, remove the battery slowly.

## Step 5 — Back Panel



- Flip the device over so the back is facing up.

## Step 6



- Remove the four 5mm screws from the back of the device using a Phillips #00 screwdriver.
- ⓘ There is a screw located under the battery; lift the battery up to access it.

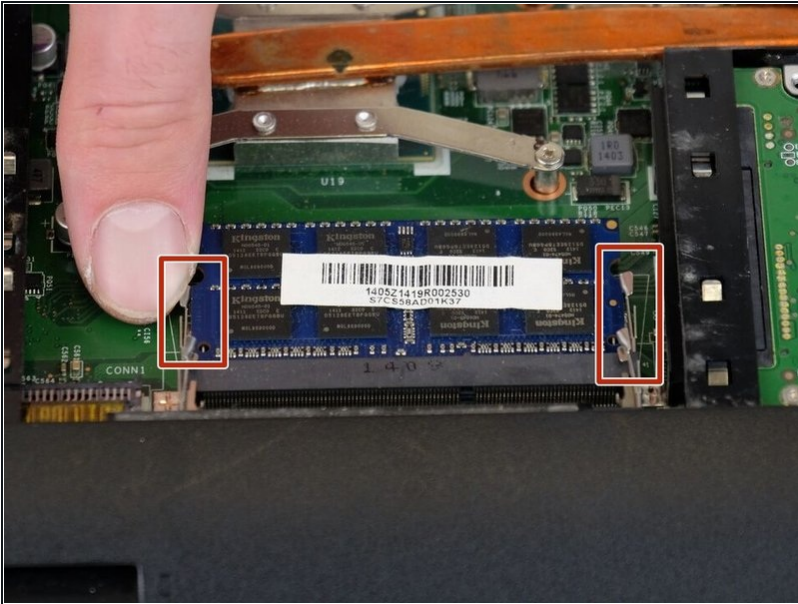
## Step 7



- Once all four screws are removed, lift the back off.

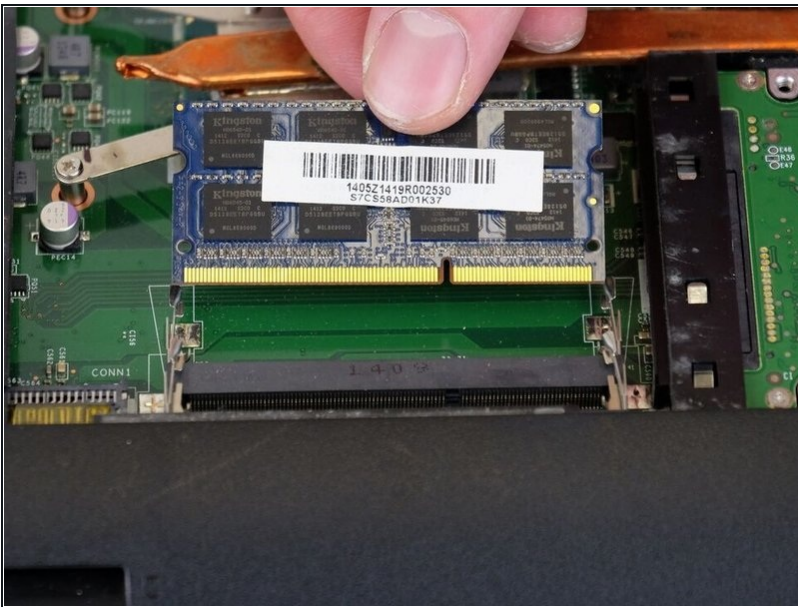


## Step 8 — RAM



- Press the tabs on the side of the RAM to remove it.

## Step 9



- Slide the RAM out of the slot carefully.

To reassemble your device, follow these instructions in reverse order.