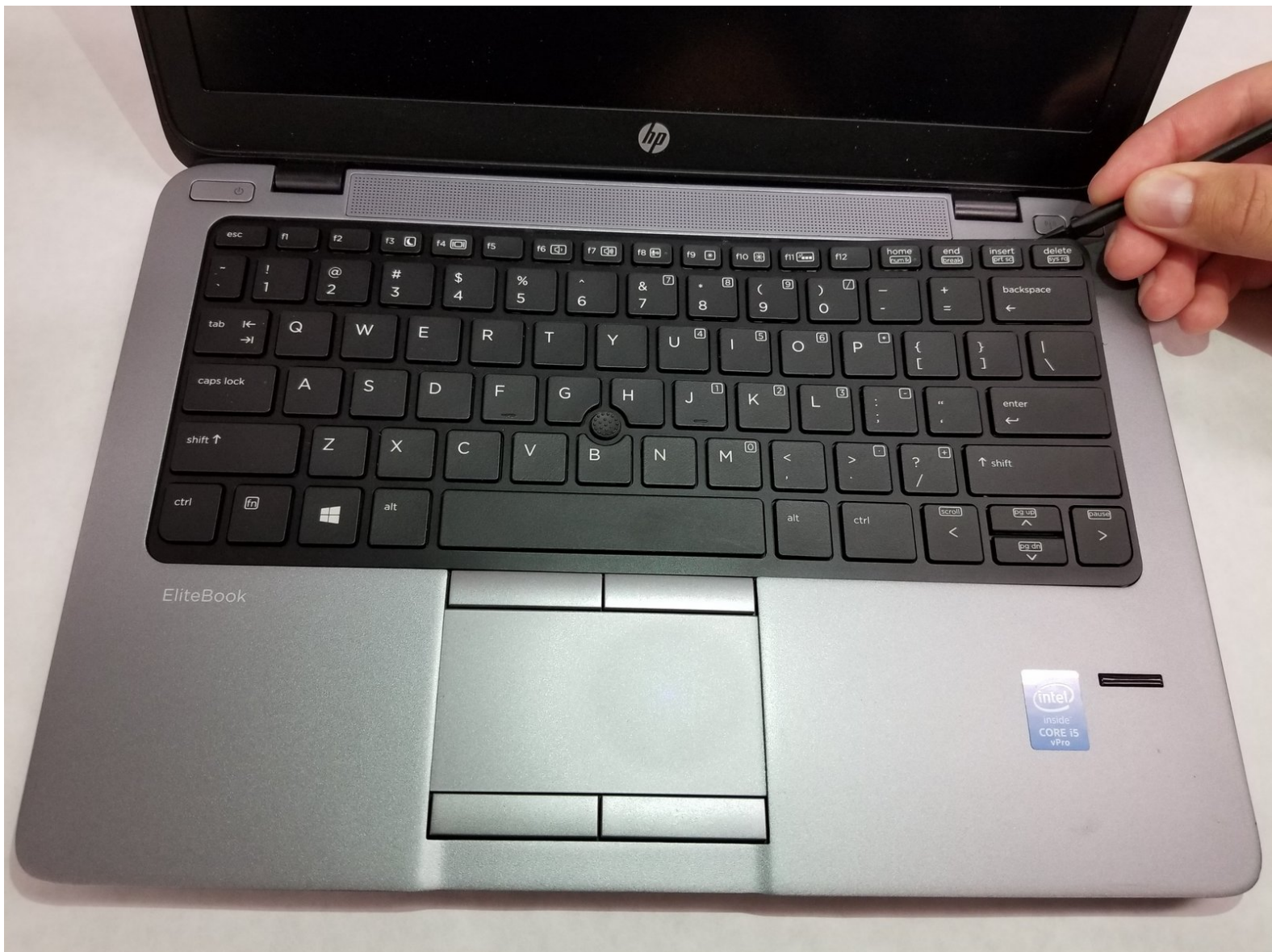




# HP Elitebook 820 G1 Keyboard Replacement

Replace the keyboard on your laptop in the case of damage or failure.

Written By: Lauren Vance



# INTRODUCTION

This guide demonstrates how to safely remove and replace a damaged or malfunctioning keyboard. Following these steps should ensure a simple replacement for a keyboard that has experienced a spill, is missing keys, or otherwise does not function correctly.



## TOOLS:

- [iFixit Opening Tools](#) (1)
  - [Spudger](#) (1)
  - [Phillips #0 Screwdriver](#) (1)
-

## Step 1 — Battery



⚠ Ensure the laptop is completely powered off and power adapter is unplugged before removing the battery.

- Turn over laptop so that the bottom is showing.
- Unlock the latch.

## Step 2



- Remove the back cover and you will then be able to see the battery.

## Step 3



- Unlatch the two latches securing the battery in the case.

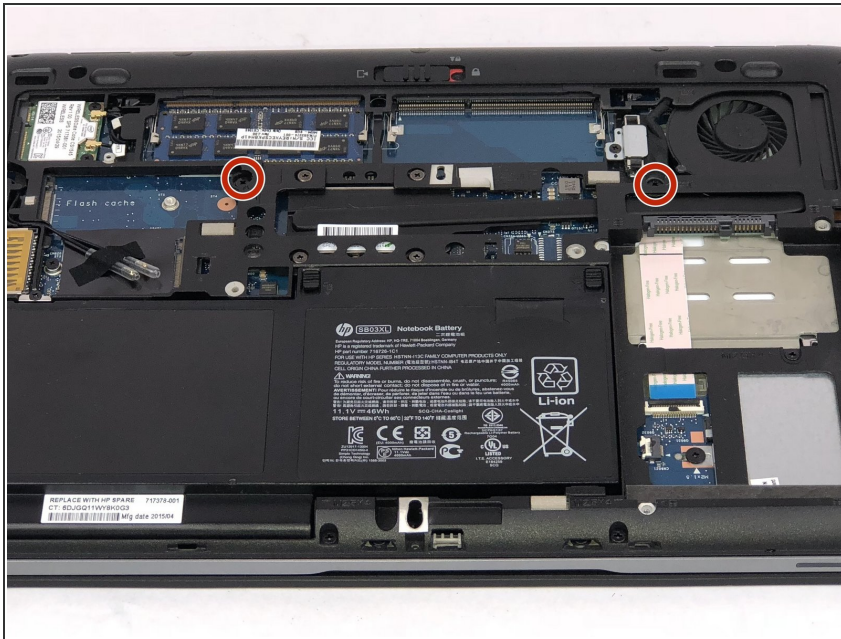
## Step 4



- Use a plastic opening tool to lift and remove the battery.

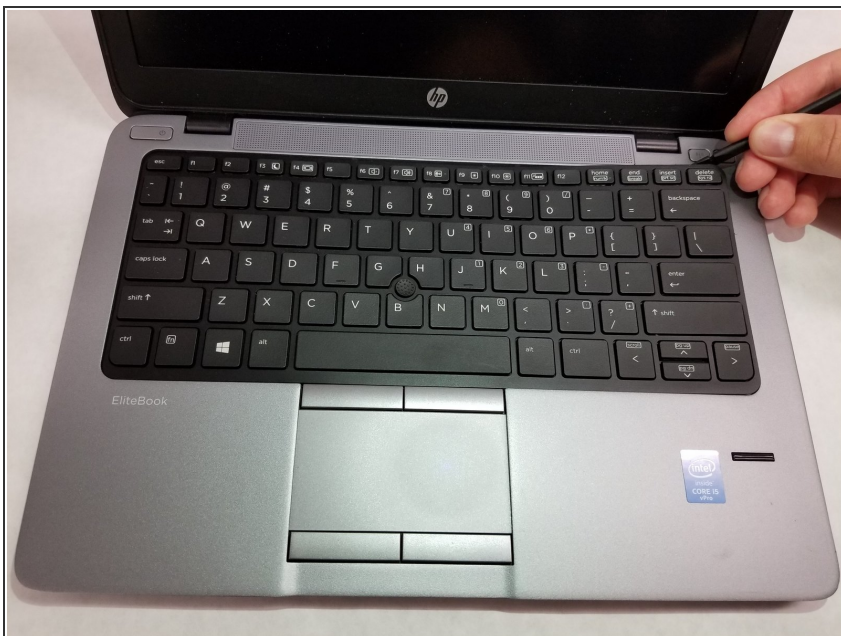


## Step 5 — Keyboard



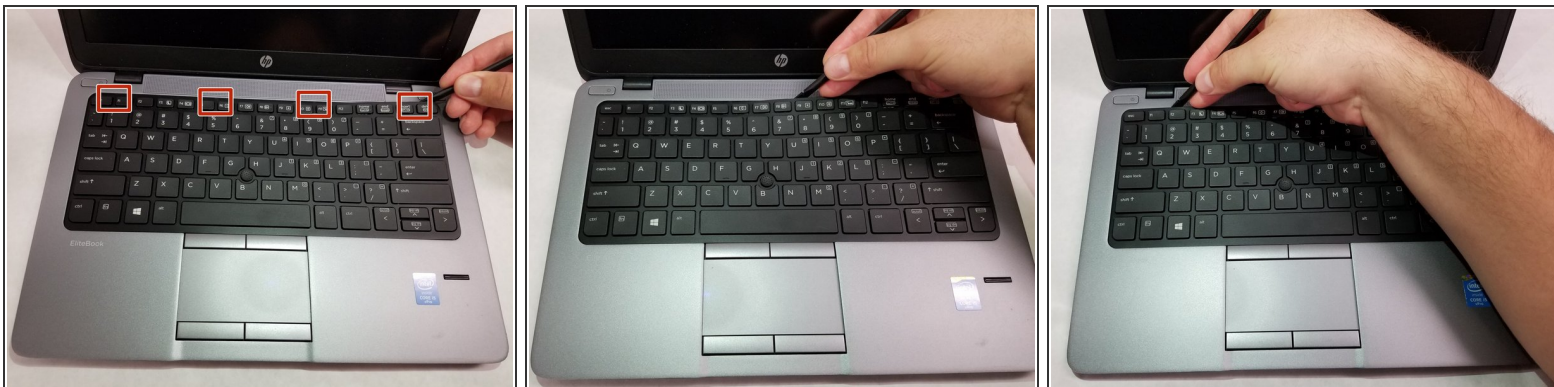
- Remove the two Phillips #0 screws securing the keyboard to the laptop.
- Turn the laptop over and lift the display to reveal the keyboard.

## Step 6



- Insert the plastic spudger between the keyboard and the housing.
- ❗ Start at the corner.

## Step 7



- 4 tabs are located at the top of the keyboard, which lock it in place.
- Pry and twist the spudger along the top of the keyboard until each tab is released.

## Step 8

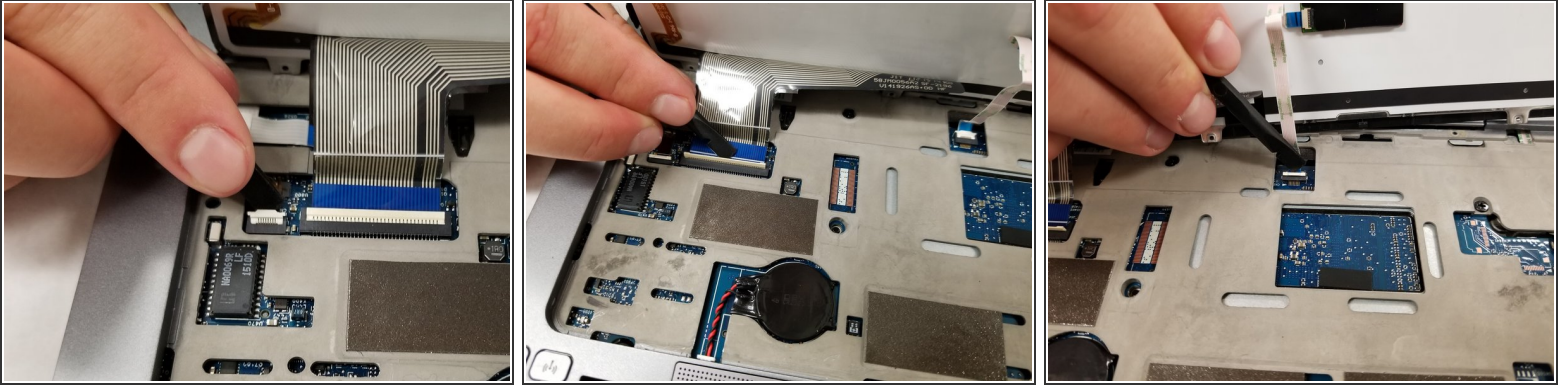


- Pull back the keyboard from the top.

⚠ Be mindful of the fragile cables behind it.



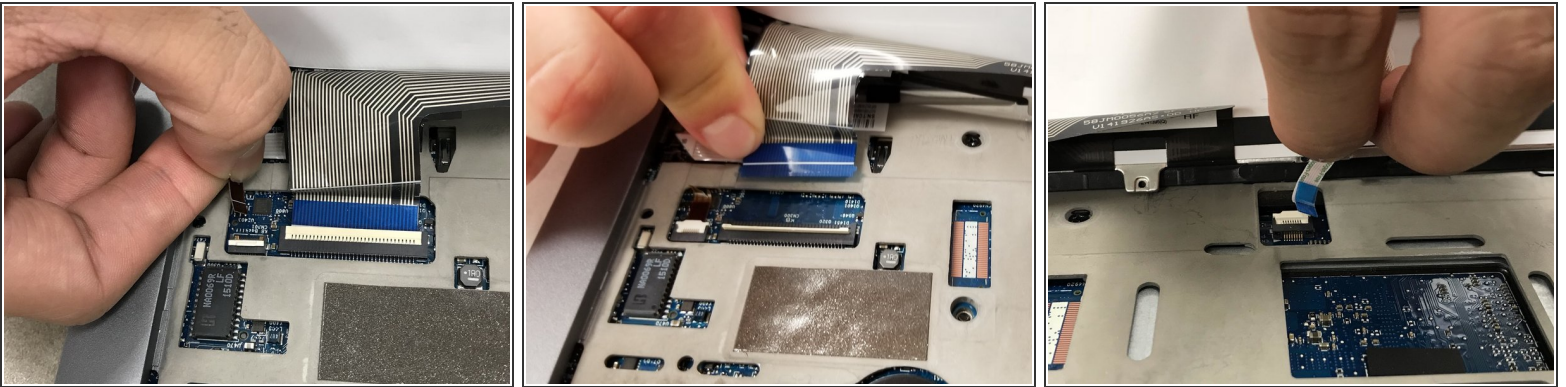
## Step 9



- Flip up the connecting flap on each of the three ribbon cables.

**i** The small cable on the last picture is only there, if you have a backlit keyboard. If you want to replace a keyboard without backlight, there will be no cable on your original keyboard.

## Step 10



- Remove each of the three cables by gently pulling them from their respective connectors.

## Step 11



- Remove the keyboard from the housing.

To reassemble your device, follow these instructions in reverse order.