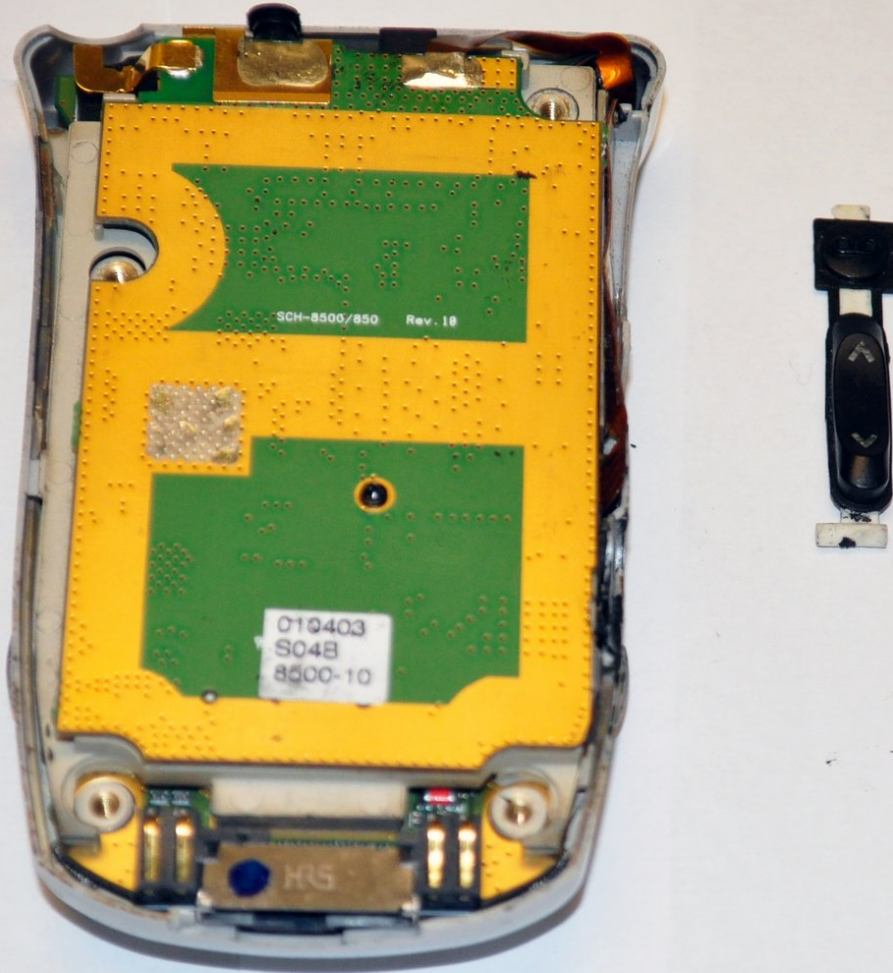




Samsung SCH-8500 Volume Button Replacement

This guide demonstrates how to install the volume button on a Samsung SCH-8500.

Written By: Will Gunter



INTRODUCTION

This guide will teach you how to get to and install the plastic volume control button on the side of the phone.



TOOLS:

- [Spudger](#) (1)
 - [T6 Torx Screwdriver](#) (1)
-

Step 1 — Battery



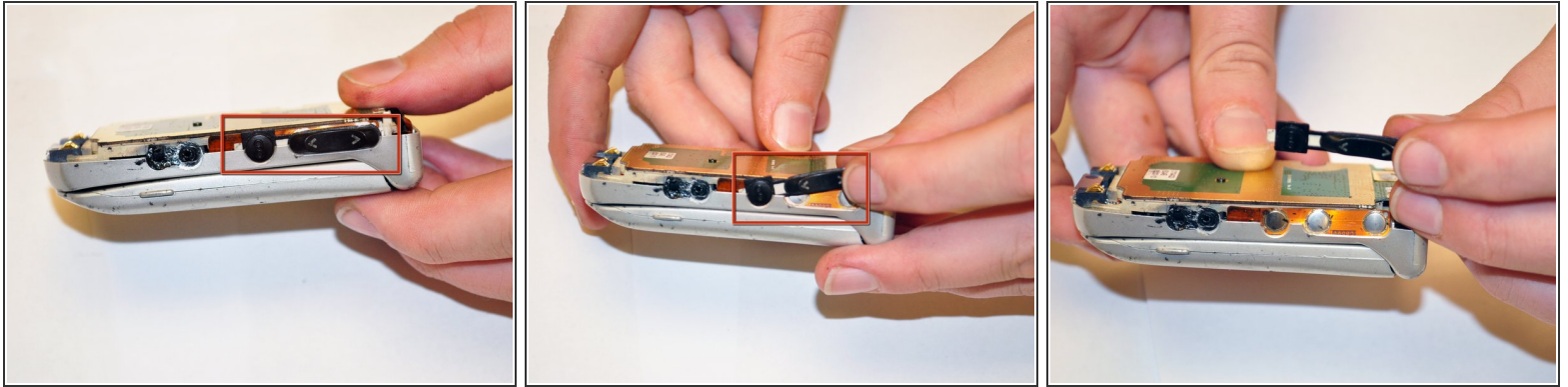
- To separate the battery from the phone, use your thumb to push in the button as shown.
- Keep the unlock button pressed as you slide the battery away from the button.
- Pull the battery away from the phone.

Step 2 — Back Case



- Use a T6 Torx screwdriver to remove the highlighted screws.
- ⓘ These are the four screws, about 10 mm long, that need to be removed. Be careful with the screws as they are small and easy to misplace.
- Carefully pry apart the two pieces, laying the back case to the side.

Step 3 — Volume Button



- With the back case fully removed and out of the way, use your fingers to remove the volume button.
- ⓘ Use caution in removal to prevent damaging any circuitry in the phone.

To reassemble your device, follow these instructions in reverse order.