



Hover-1 H1 Power Button Replacement

How to replace the power button on your Hover-1 H1 Hoverboard.

Written By: Christopher Bruni



INTRODUCTION

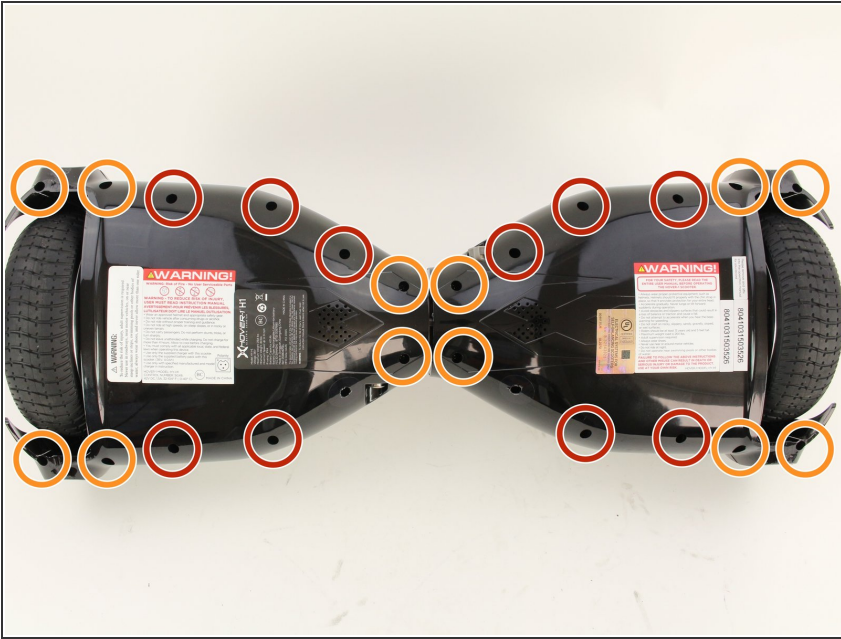
Replacing the power button of your Hover-1 H1 hoverboard can help with problems involving turning on your device.



TOOLS:

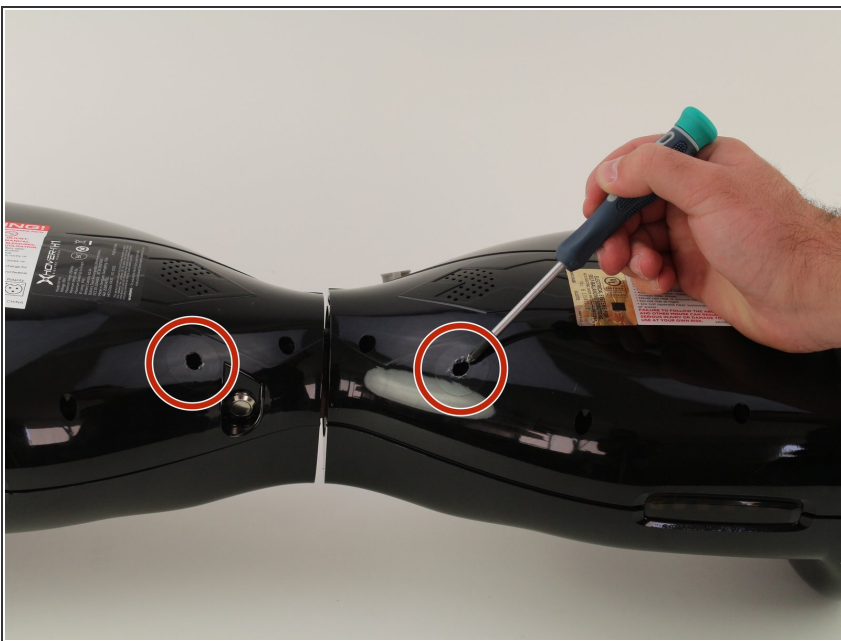
- [Phillips #2 Screwdriver](#) (1)
 - [Adjustable Wrench](#) (1)
-

Step 1 — Bottom Shell



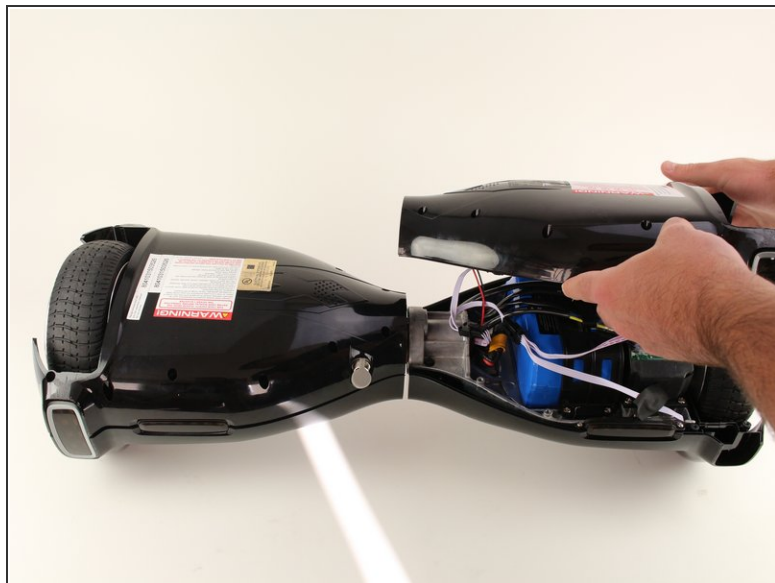
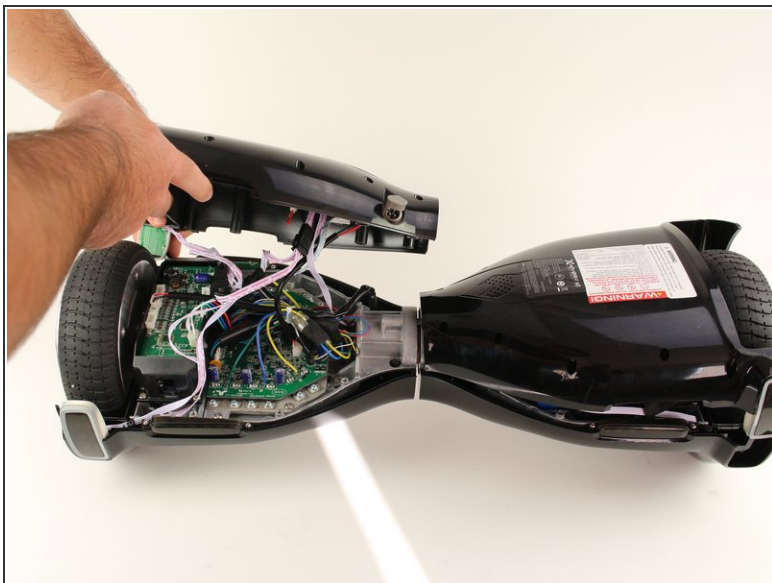
- Remove the ten 9mm machine screws by using a long Phillips #2 screwdriver to rotate the screws counterclockwise.
- Remove the twelve 9mm sheet metal screws by using a long Phillips #2 screwdriver to rotate the screws counterclockwise.

Step 2



- Puncture the two black stickers by using the tip of a screwdriver.
- Remove the two 9mm machine screws by using a long Phillips #2 screwdriver to rotate the screws counterclockwise.

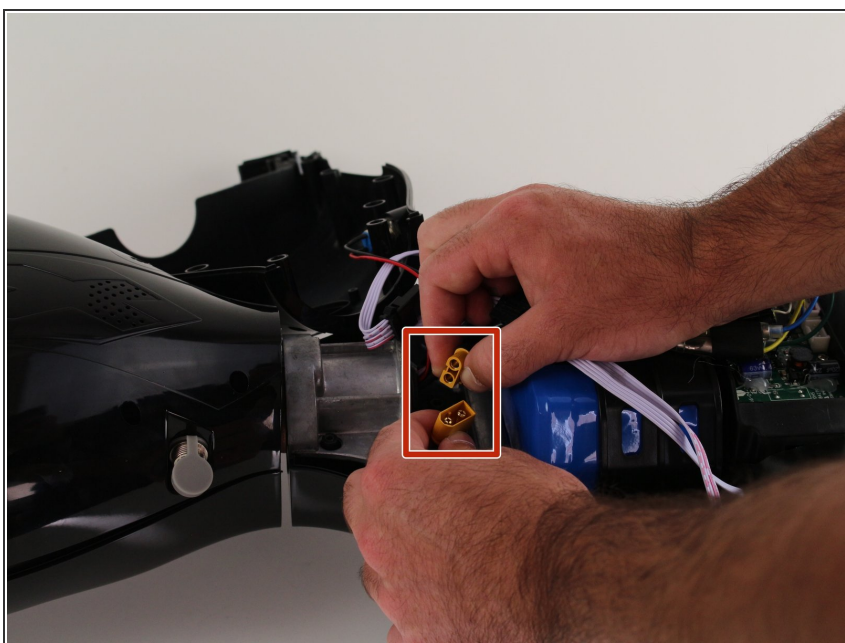
Step 3



- Lift each side of the bottom shell by pulling up.

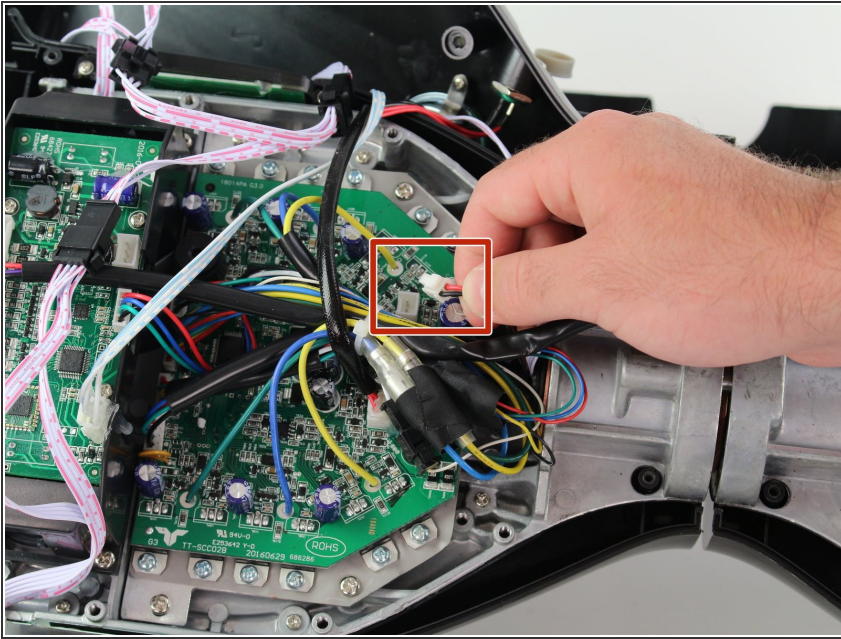
⚠ When lifting the shell, take care to not tear any cables from their connectors.

Step 4



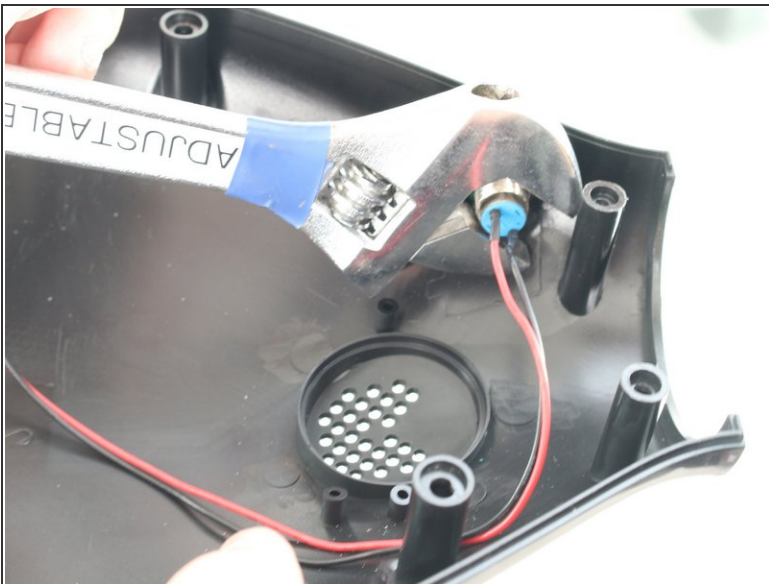
- Unplug the battery by pulling gently on both sides of the orange connector.

Step 5 — Power Button



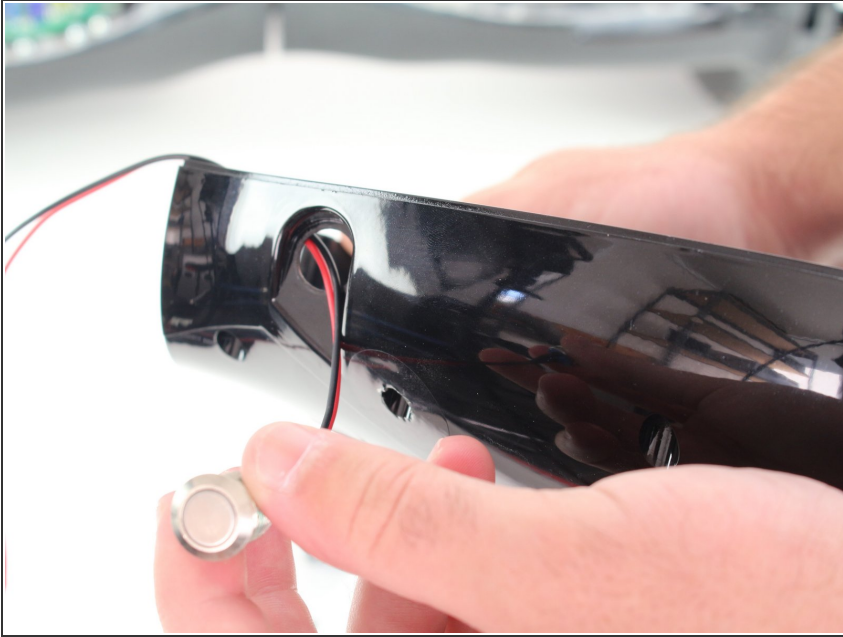
- Unplug the power button connector by pinching the tab on the front and pulling directly upwards.
- Pull the cable through the center section of the hoverboard.
- ★ For reassembly, you will have to feed the cable back through the center section. This can be done using a rigid wire or cable.

Step 6



- Using an adjustable wrench, remove the nut on the back of the power button by rotating the nut counterclockwise.

Step 7



- Pull the power button through the hole in the shell.

To reassemble your device, follow these instructions in reverse order.