



# HP Officejet Pro 8625 Printhead Replacement

Replace the printhead if HP Officejet Pro 8625 is having a printhead error.

Written By: Cam Engle



---

## INTRODUCTION

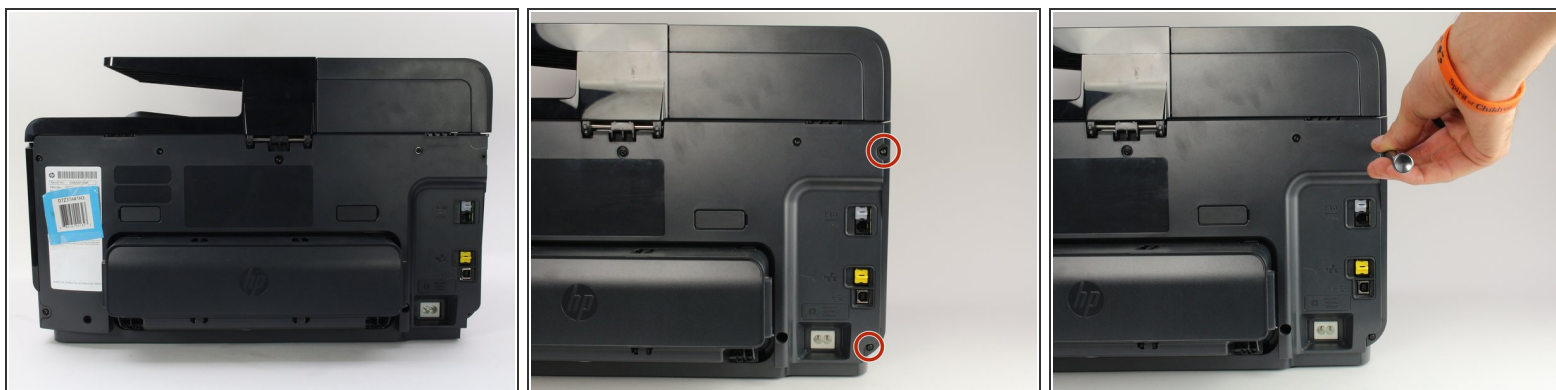
The printhead holds the ink cartridges and is responsible for the motions that actually print documents onto paper. If you receive error messages stating that the printhead is missing or failed, use this guide to replace it. You will need a T9 Torx screwdriver for all of the screws in this guide.

---

### **TOOLS:**

- [T9 Torx Screwdriver](#) (1)
-

## Step 1 — Left Side Panel



- Remove the two 11.6 mm T9 screws from the right side of the back of the printer.

## Step 2



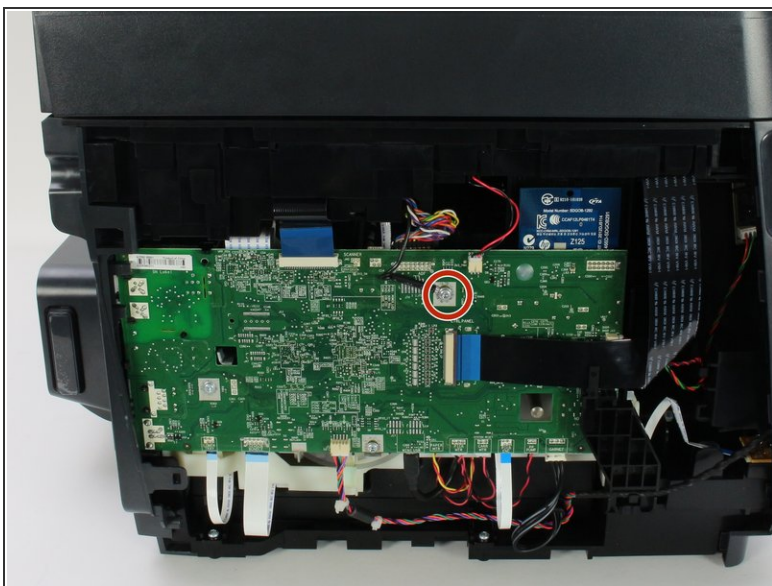
- Pull down the front panel to expose the screws on the front.
- Remove the one 11.6 mm T9 screw on the left side of the front face.

## Step 3



- Remove the side panel by pushing down and towards the back.
- ⓘ This step may be easier if the printer is laid on its side with the left side panel facing up.

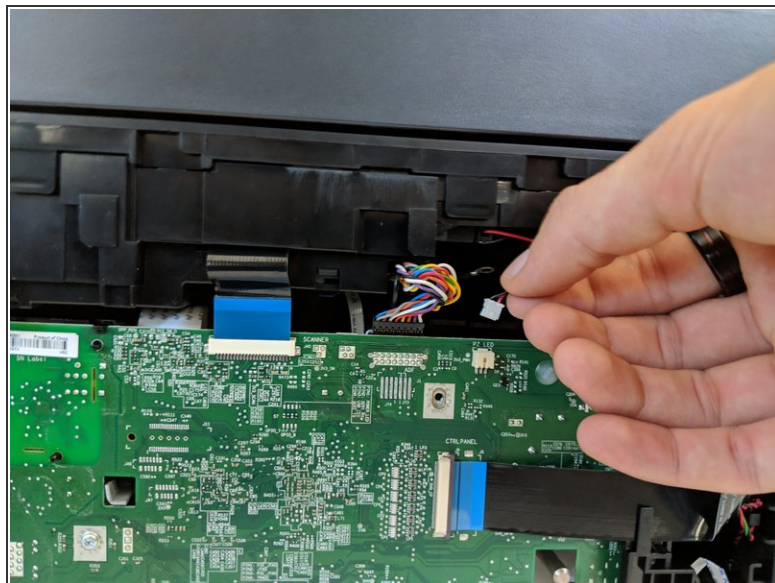
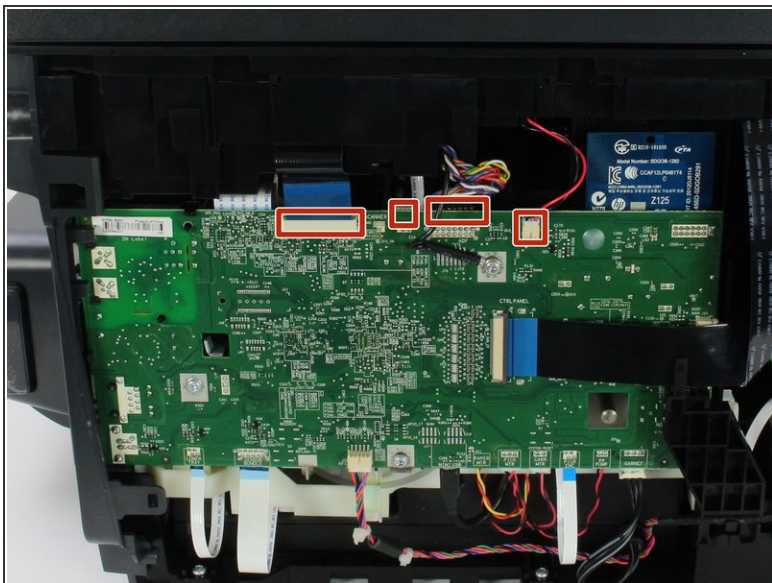
## Step 4 — Printhead



- Remove the one 5.3 mm T9 screw.



## Step 5



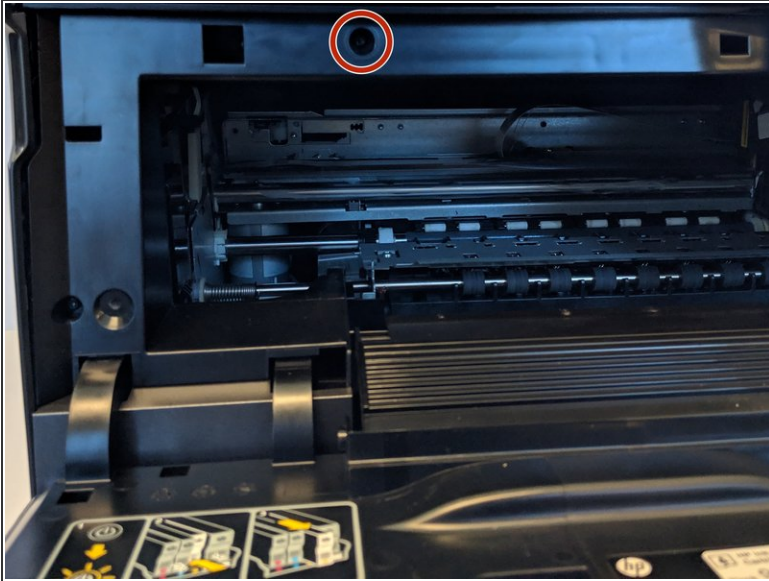
- Remove the four connectors from the top of the motherboard.

## Step 6



- Remove the three 11.6 mm T9 screws from the top, back of the printer.
- Remove the one 12.1 mm T9 screw from the top, back of the printer.

## Step 7



- Remove the 11.6mm T9 screw from the top left of the front of the printer.

## Step 8



- Disconnect the display by pulling down on the plastic hinge.
- ⓘ Gradually apply more force to the hinge and don't worry about the hinge or display breaking.

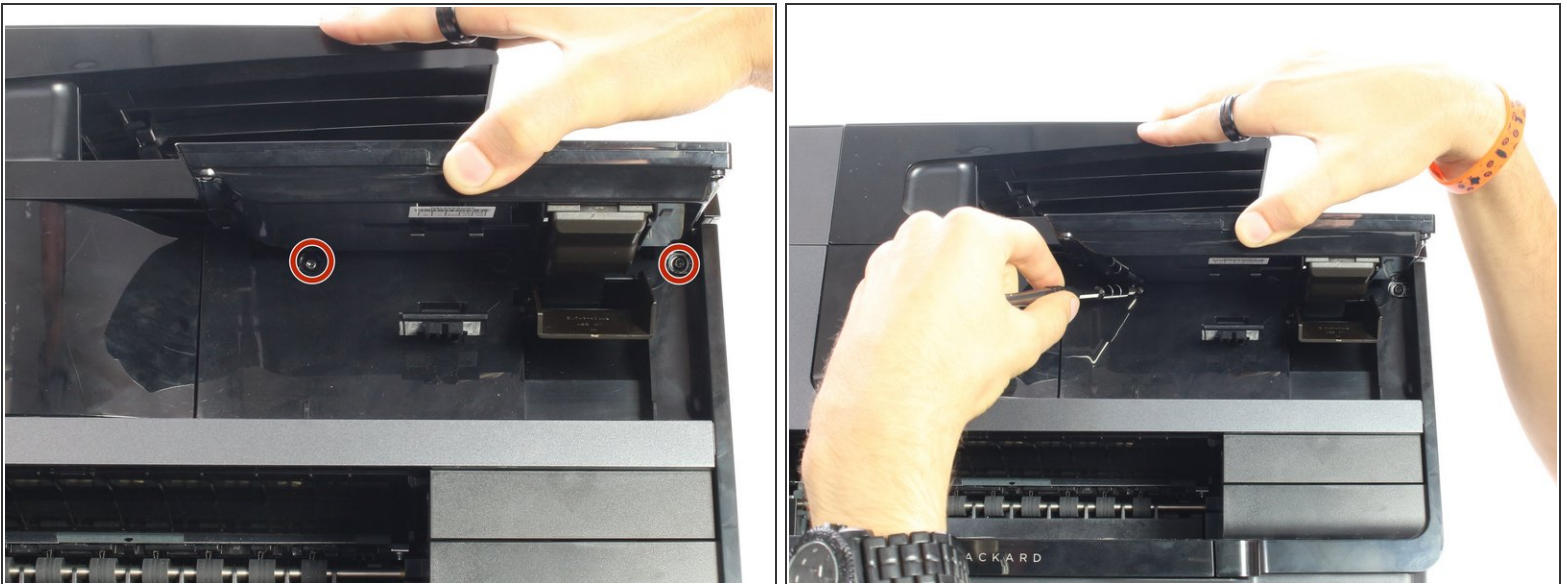


## Step 9



- Lift the display as high as it will allow to expose the back of the display.
- Remove the connector by pinching the sides and pulling away from the printer.
- Remove the connector by pulling both away from the display and towards the printer.

## Step 10



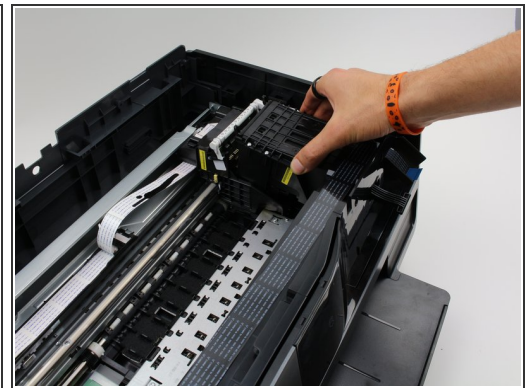
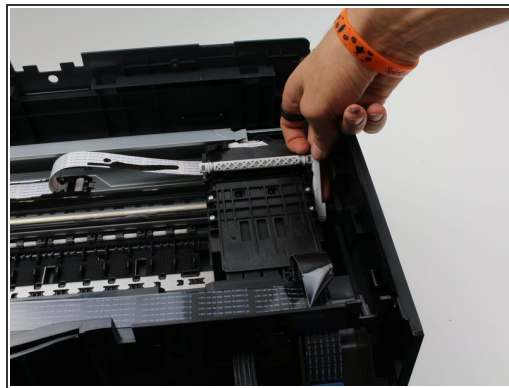
- Remove the two 11.6 mm T9 screws from beneath the display.

## Step 11



- Remove the top of the printer by lifting it from both sides.

## Step 12



- Locate the printhead on the right side of the printer.
- Pull the white tab on the right side of the printhead up, by pushing on the side of the printer a little bit.
- Remove the printhead by lifting it out of the housing.

To reassemble your device, follow these instructions in reverse order.