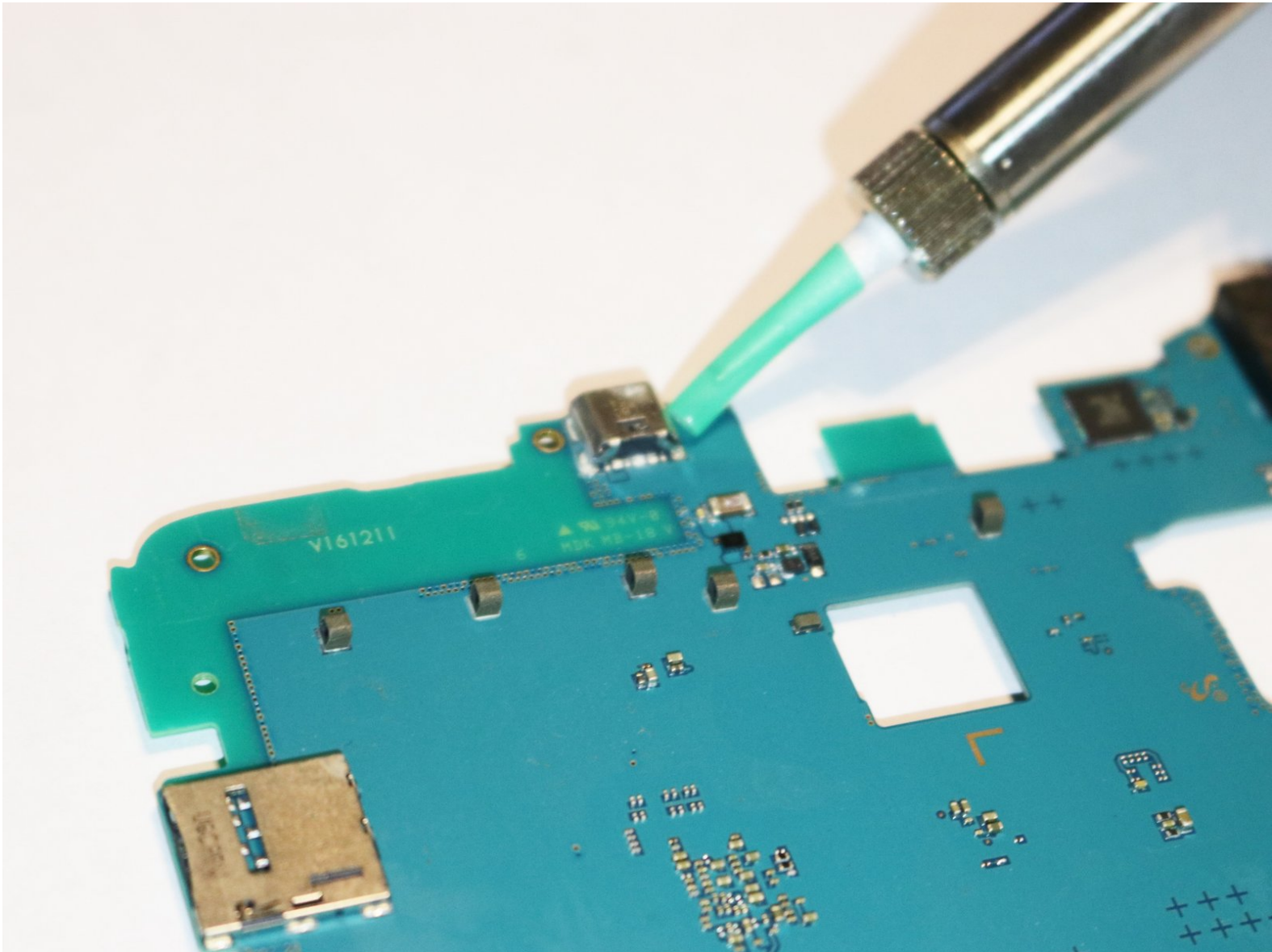




Samsung Galaxy Tab E 8.0 Charging Port Replacement

Removing the charger port for the Samsung Galaxy Tab E 8.0.

Written By: Chrissy B



INTRODUCTION

The charging port of the Samsung Galaxy Tab E 8.0 may not be functional due to internal damages or overuse. This guide will show you how to replace the charging port, which is attached to the motherboard.



TOOLS:

- [JIS #00 Screwdriver](#) (1)
 - [iFixit Opening Tools](#) (1)
 - [Tweezers](#) (1)
 - [Portable Soldering Iron](#) (1)
-

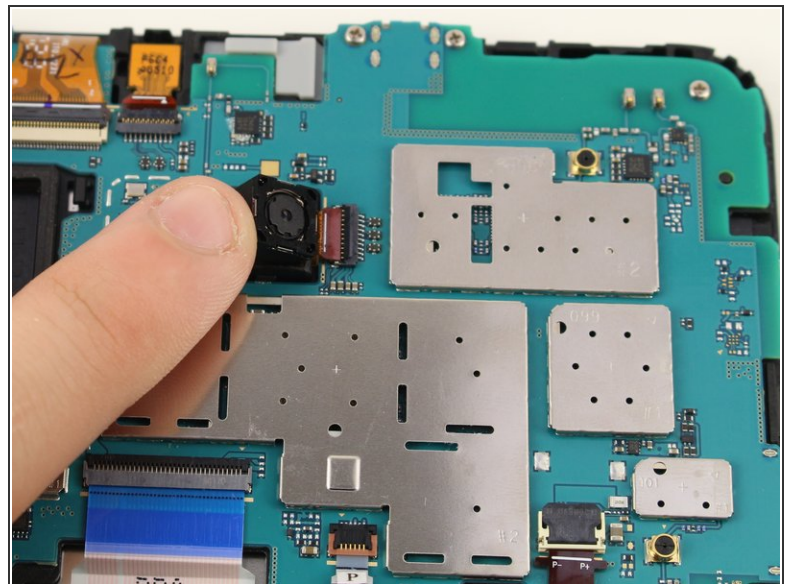
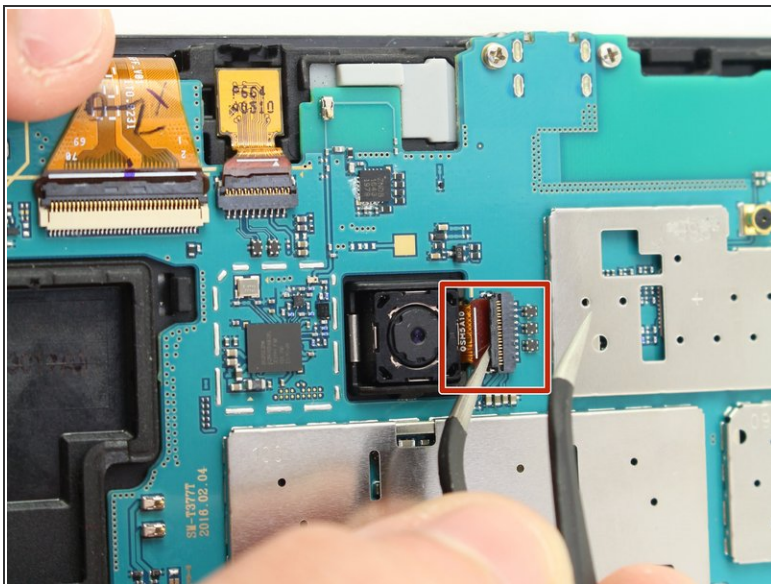
Step 1 — Back Panel



- Use the iFixit Opening Tool to pry off the back case, moving the tool around the screen.

⚠ Make sure the device is off and the SD card is removed before taking off the back casing.

Step 2 — Back Camera



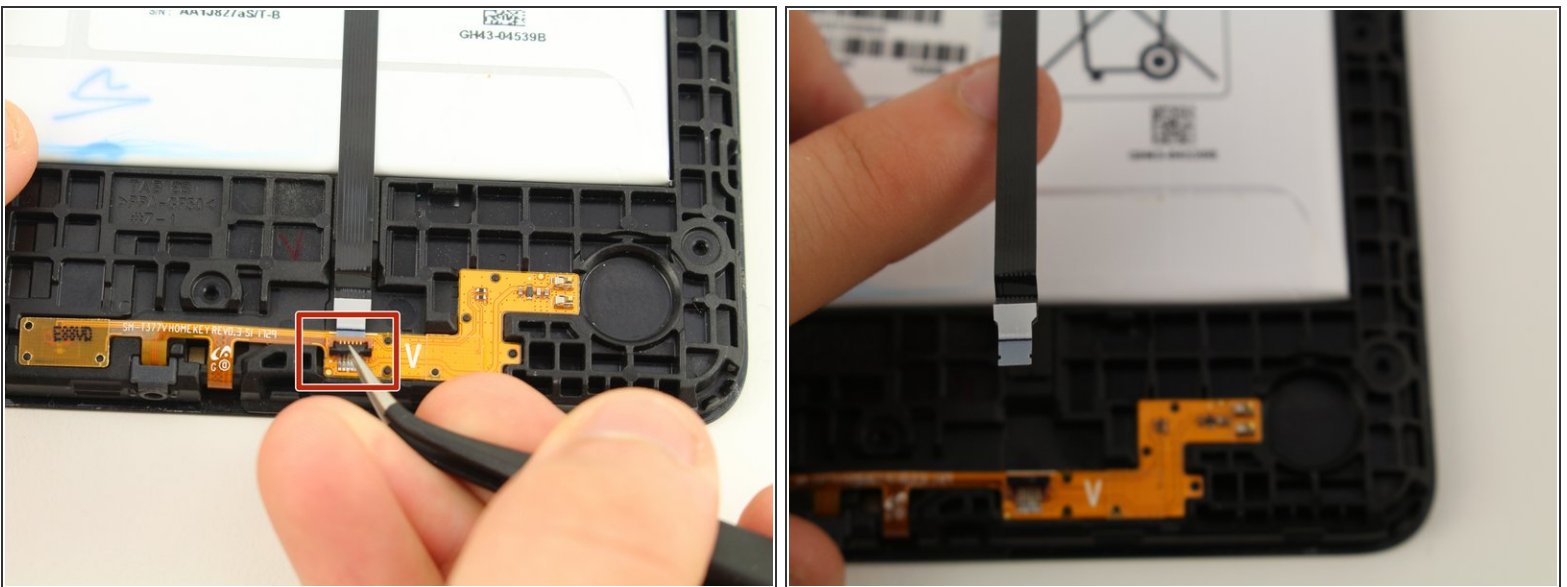
- Use the tweezers to lift the switch connecting the back camera to the motherboard.
- Use your hand to remove the back camera from the motherboard.

Step 3 — Front Camera



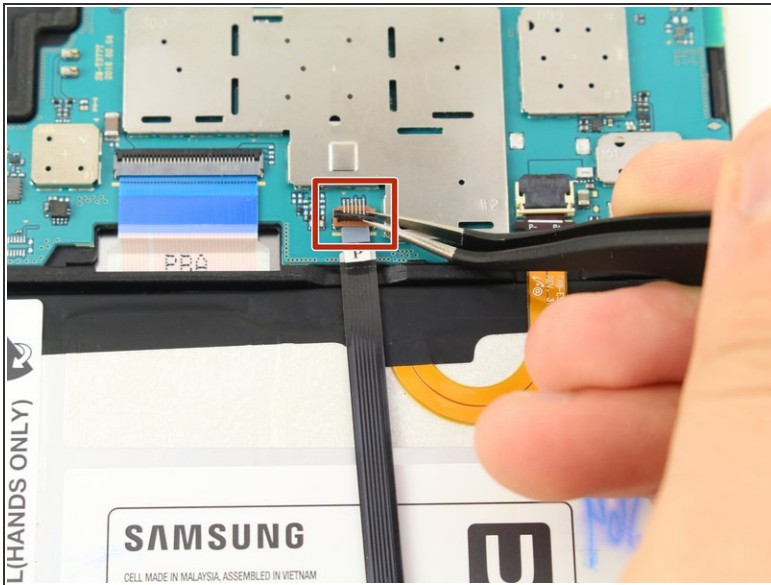
- Use the tweezers to lift the switch connecting the front camera to the motherboard.
- Remove the front camera from the motherboard by lifting with the tweezers.

Step 4 — Motherboard



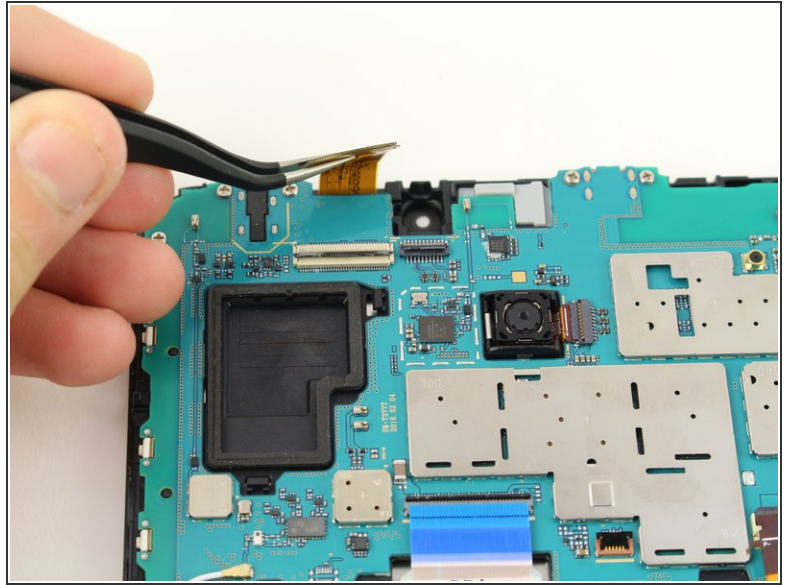
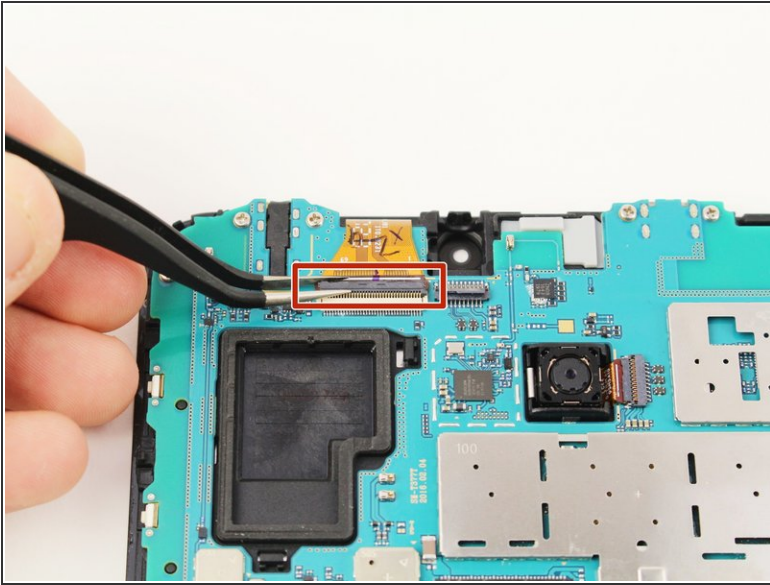
- Use the tweezers to flip the switch on the bottom of the strap that goes over the battery.
- Release the strap from the switch by lifting the strap with your hand.

Step 5



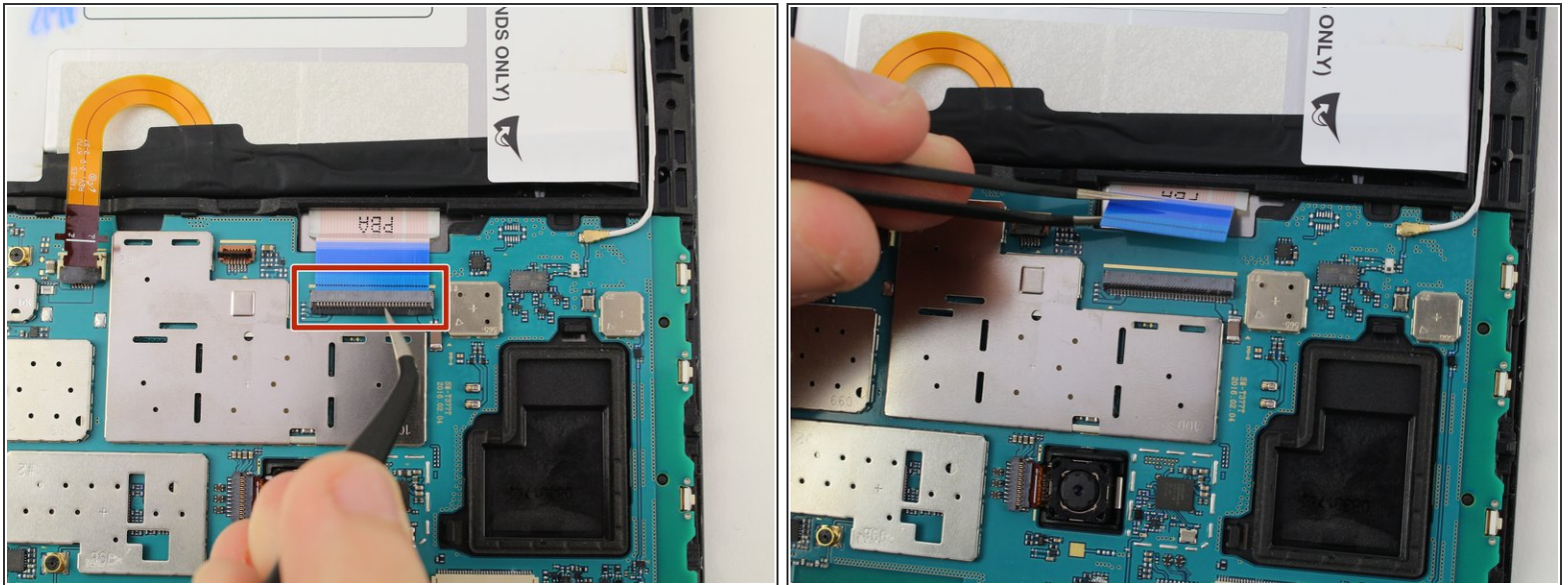
- Use the tweezers to flip the switch that connects the top of the strap to the motherboard.
- Lift the top end of the strap with your hand and remove the strap completely from the device.

Step 6



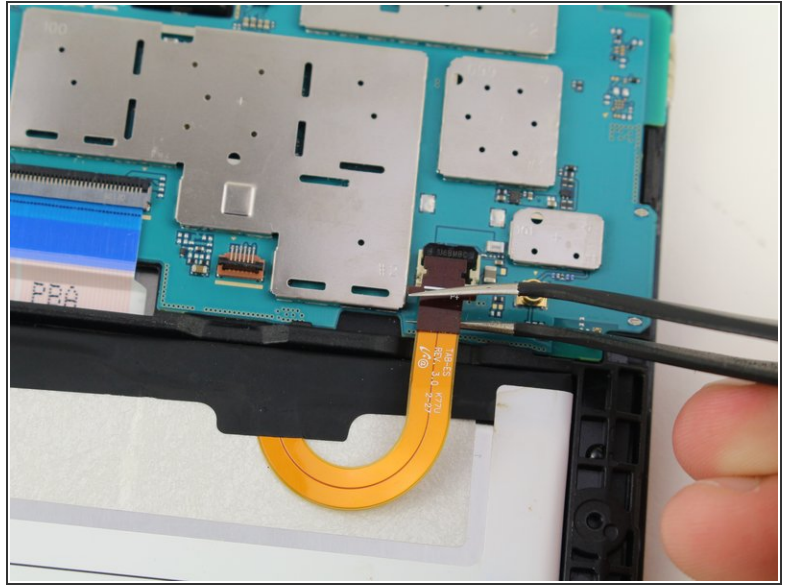
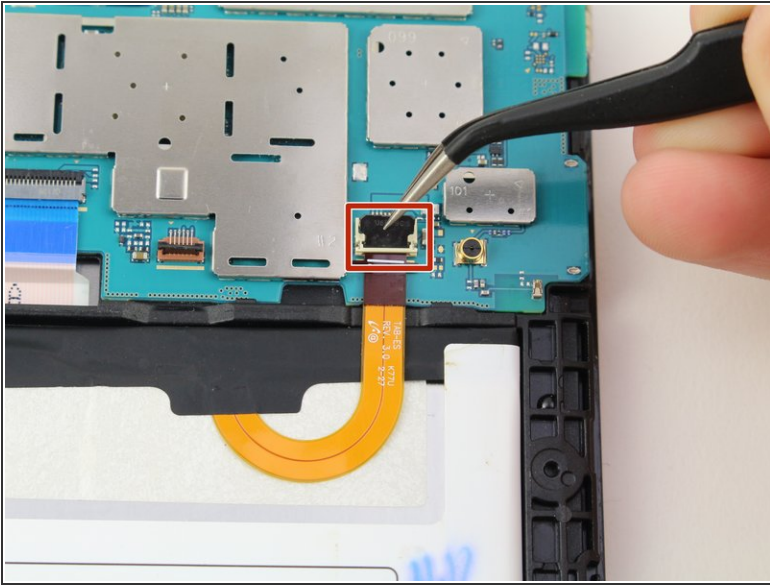
- Use the tweezers to flip the switch of the connector.
 - Lift the connector from the motherboard.
- i** This connector does not come completely off, but disconnects from the motherboard.

Step 7



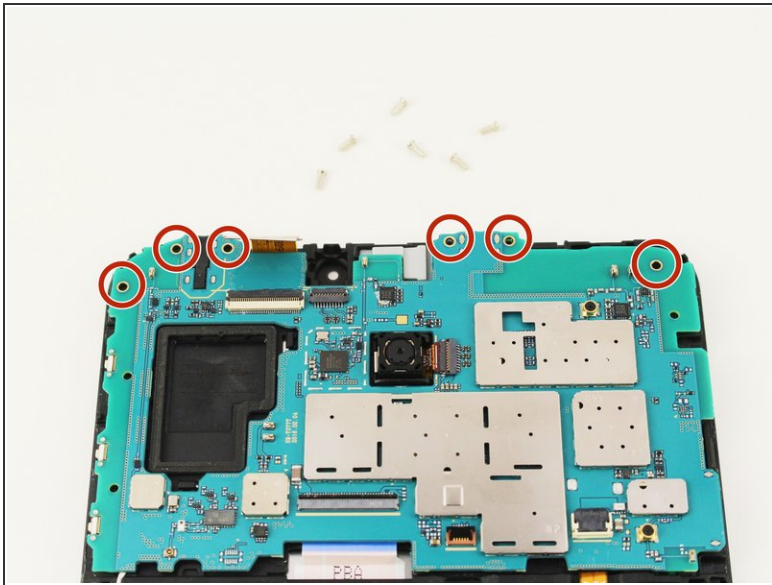
- Use the tweezers to flip the switch of the blue connector on the motherboard.
- Lift the connector from the motherboard.
- ⓘ This switch can detach from the device, but just needs to disconnect from the motherboard.
- ⓘ Ensure the blue ribbon cable is not under the motherboard upon reassembly.

Step 8



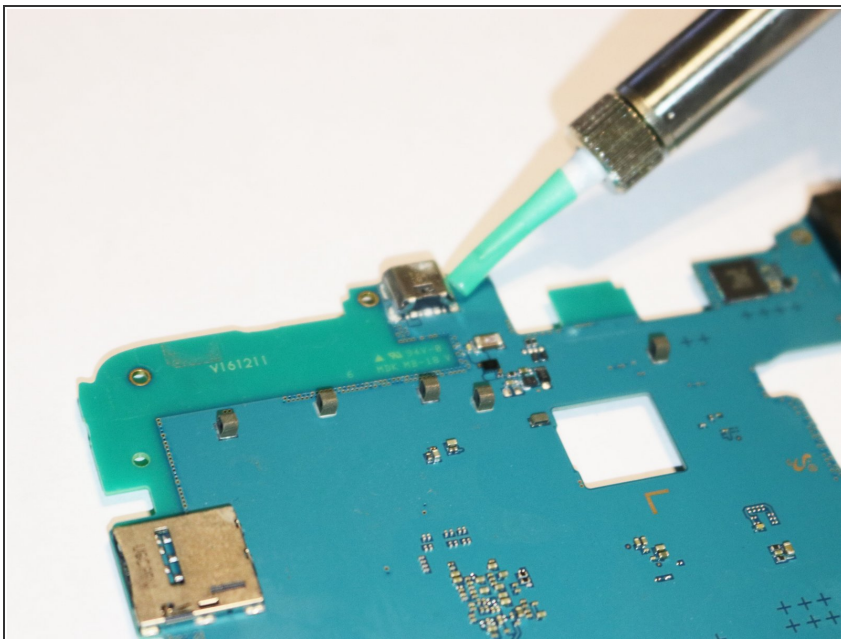
- Use the tweezers to flip the switch of the connector that runs from the battery to the motherboard.
 - Lift the connector from the motherboard.
- i** This switch can detach from the device, but just needs to disconnect from the motherboard.

Step 9



- Use a JIS #00 screwdriver to remove the six 4.5mm screws at the top of the motherboard.
- Lift the motherboard with your hand to detach the motherboard from the device.

Step 10 — Charging Port



- Use the soldering tool to remove the charging port.

To reassemble your device, follow these instructions in reverse order.