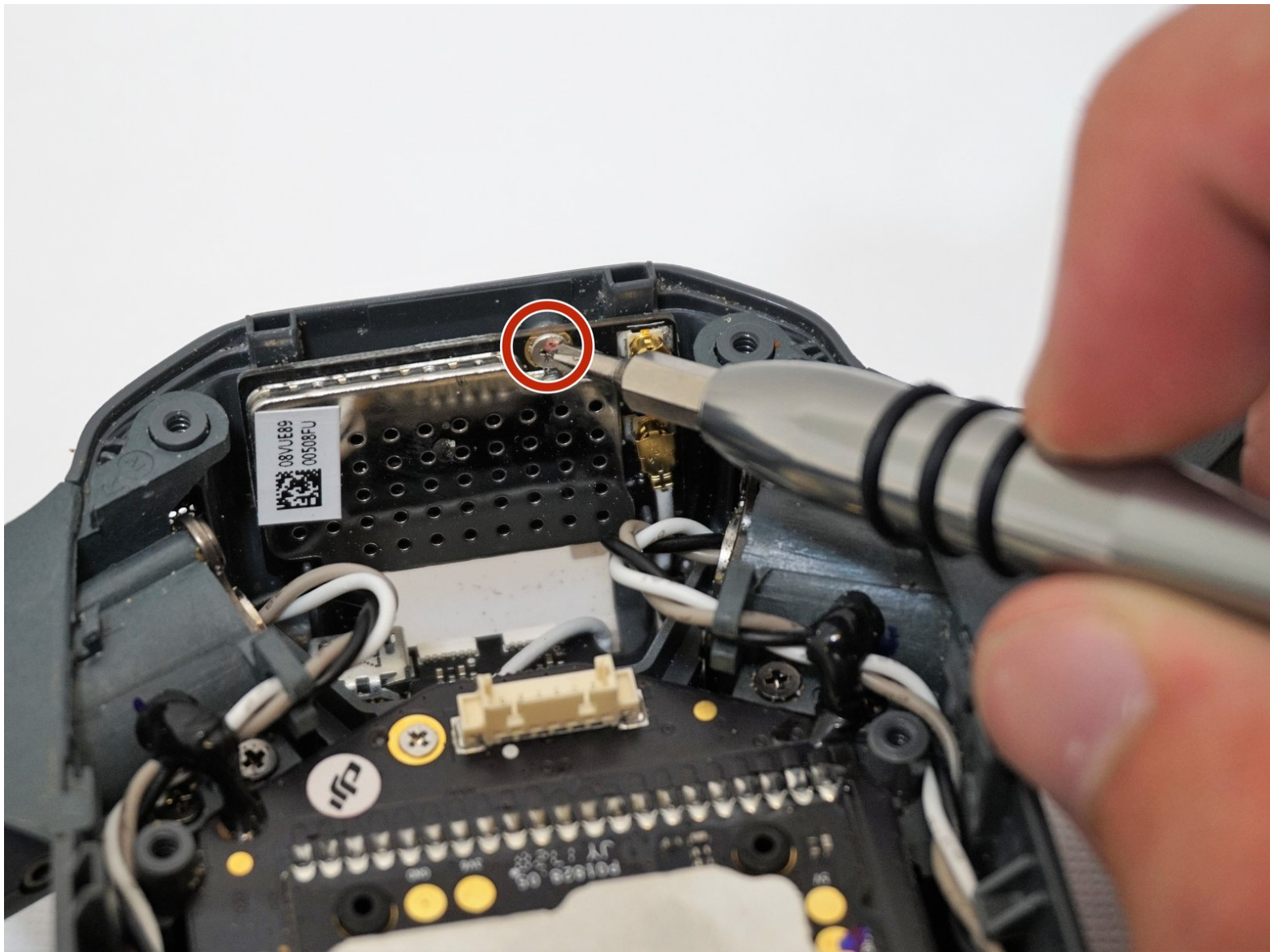




# DJI Mavic Pro WiFi Board Replacement

How to replace the Wifi Board on a DJI Mavic Pro M1P.

Written By: Mondona Behroozian



## INTRODUCTION

This set of instructions will walk you through how to replace the DJI Mavic Pro WiFi Board. The WiFi board is located under the upper shell of the drone. In order to get to the WiFi board you will need to remove the battery and upper shell first. You will need to carefully pry the upper shell off to perform this guide.

---

### TOOLS:

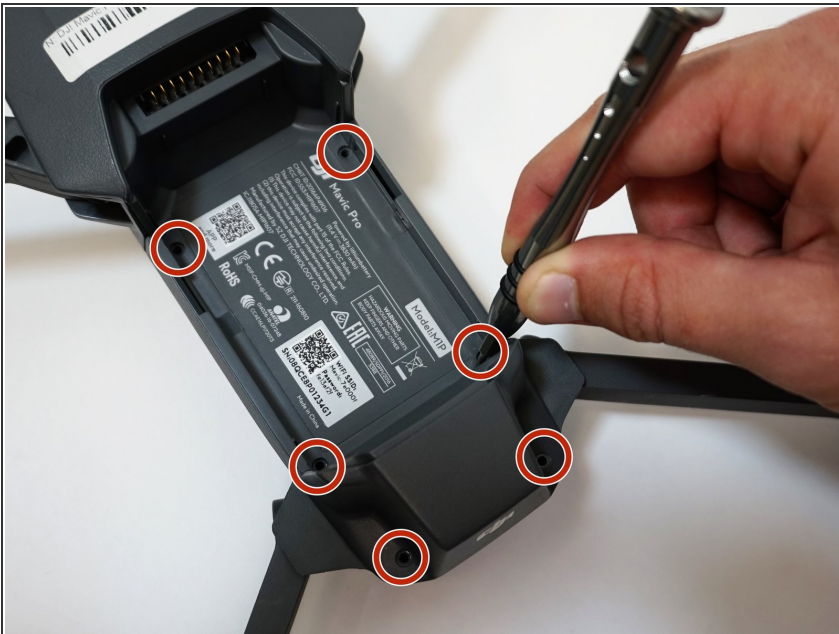
- [Spudger](#) (1)
  - [Tweezers](#) (1)
  - [1.5mm Hex Screwdriver](#) (1)
  - [Phillips #00 Screwdriver](#) (1)
-

## Step 1 — Battery



- Grab both sides of the battery.
- Pinch the releasing buttons on both sides of the battery.
- Lift the battery up and out.

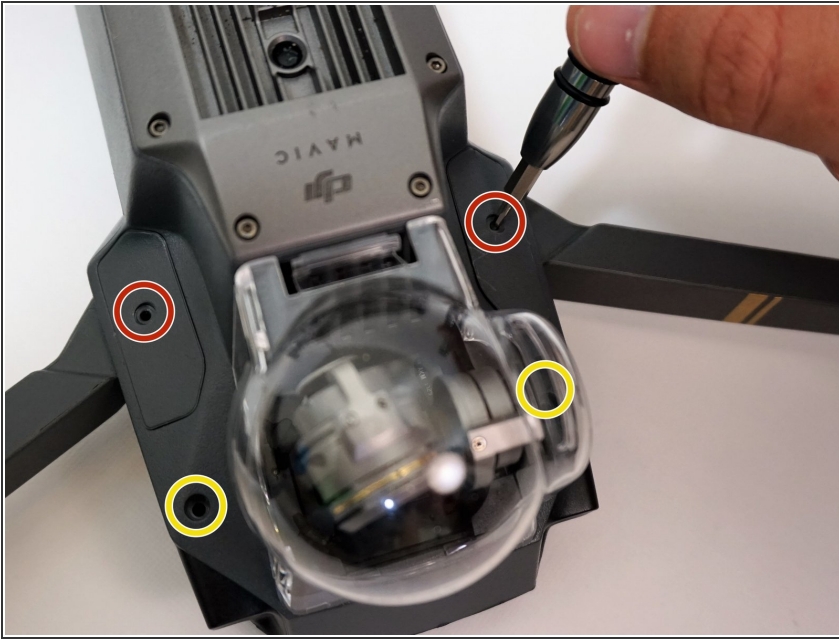
## Step 2 — Upper Shell



- Remove the six 5mm 1.5 Hex screws by turning the screwdriver counterclockwise.

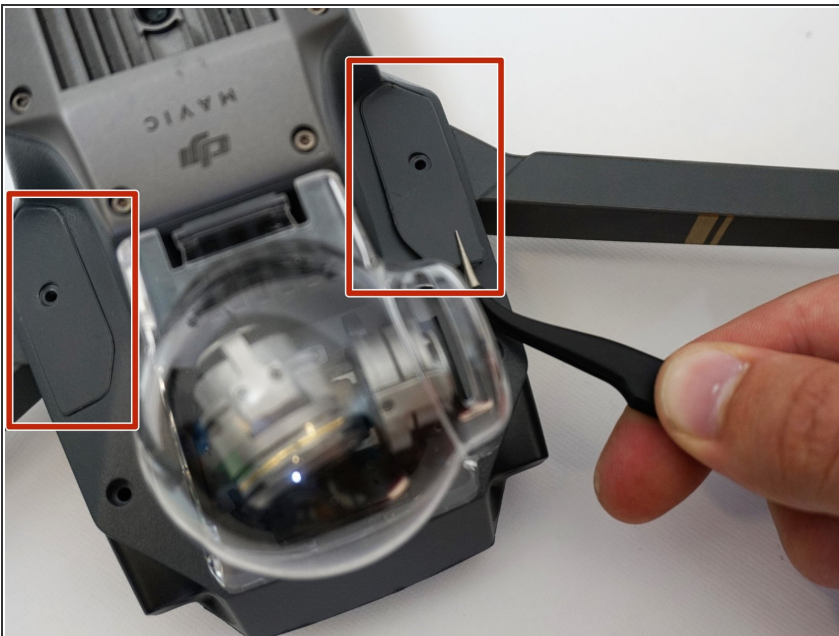


### Step 3



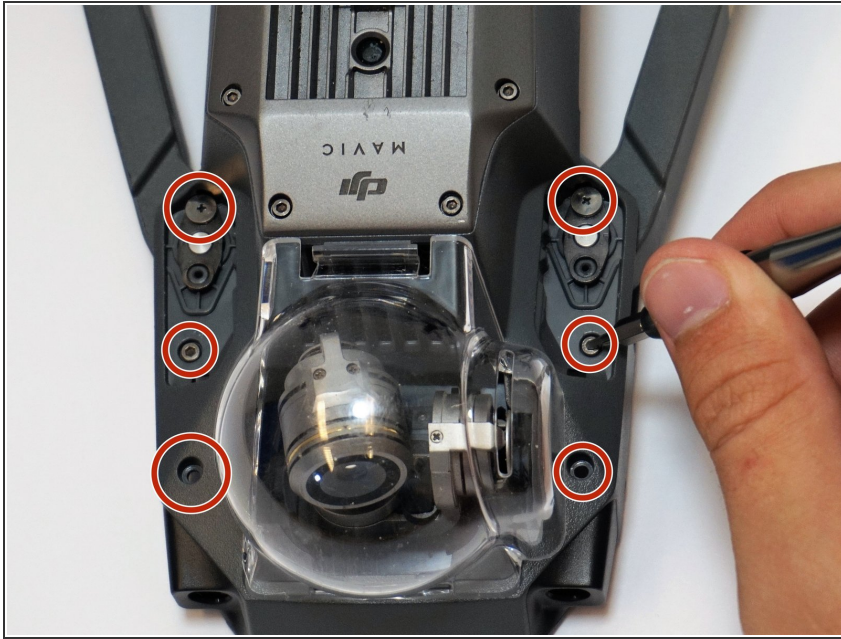
- Flip the drone over so that the gimbal is facing up.
- Remove the two 4mm 1.5 Hex screws near the gimbal case by turning the screwdriver counterclockwise.
- Remove the two 5mm 1.5 Hex screws near the gimbal case by turning the screwdriver counterclockwise.

### Step 4



- Remove the two small panel pieces near the gimbal case with the tweezers.

## Step 5



- Remove the six 5mm 1.5 Hex screws that are under the panel pieces by turning the screwdriver counterclockwise.

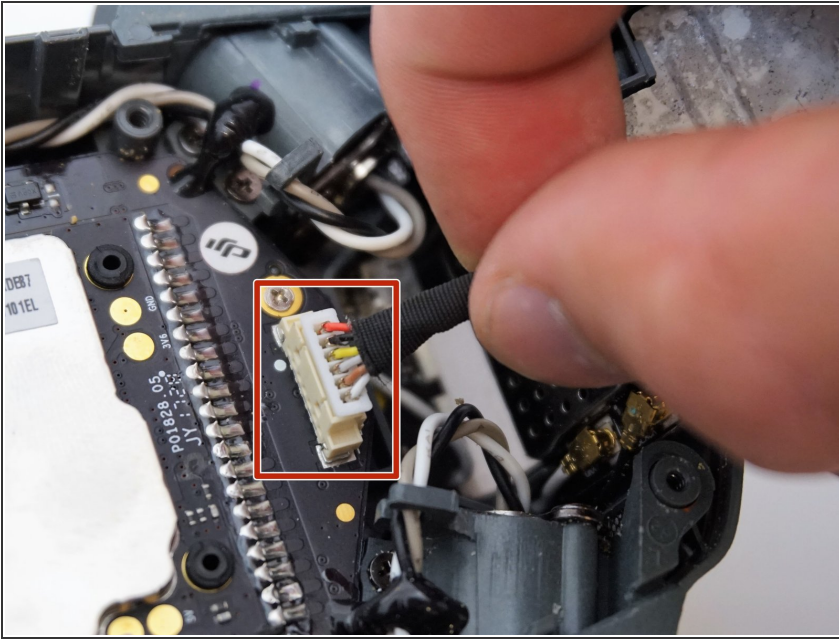
## Step 6



- Flip the drone back over so the upper shell is facing up.
- Pry off the upper shell with a nylon spudger.

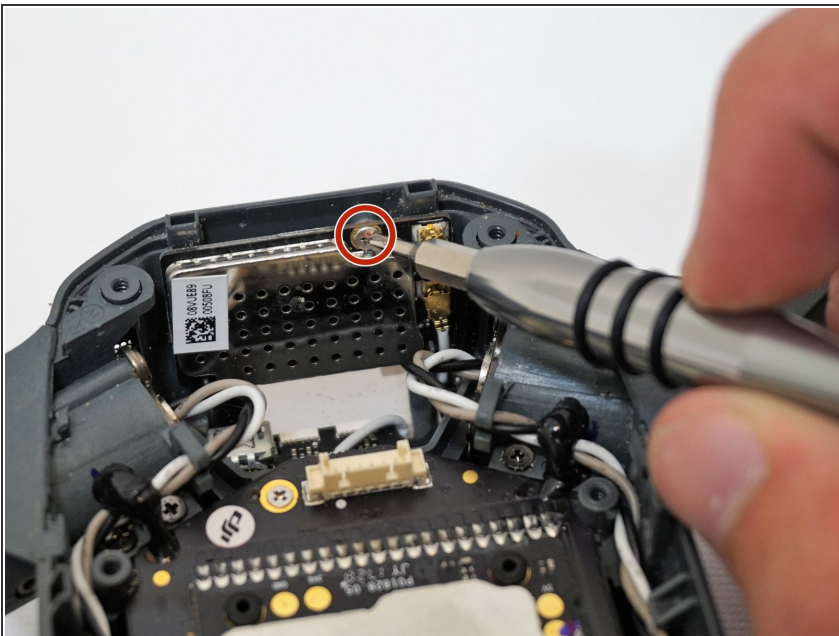
**⚠ Be careful when prying with the spudger because you could damage the upper shell's plastic tabs.**

## Step 7



- Remove the white connector at the back of the flight controller board by gently pulling at the base.

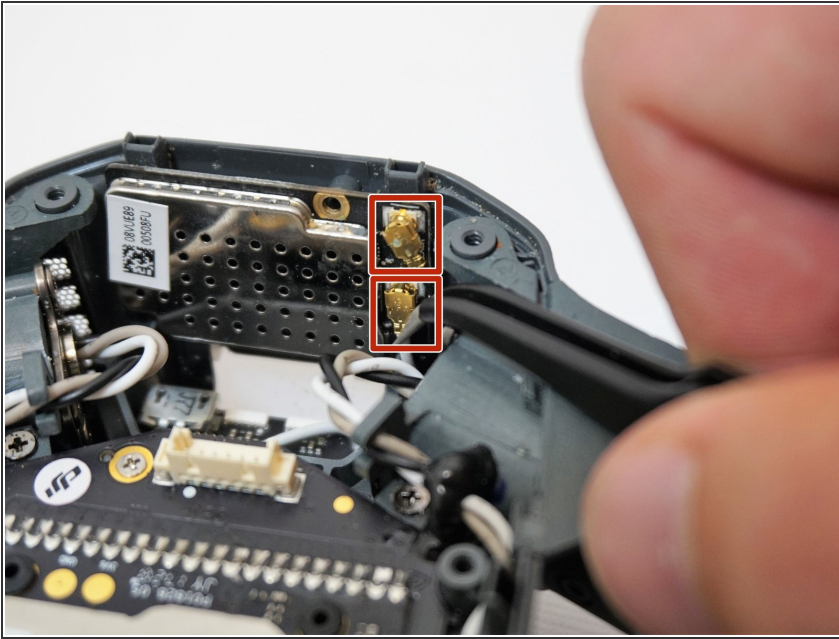
## Step 8 — WiFi Board



- Remove the lone 4mm Phillips #00 screw holding the WiFi board in place by turning the screwdriver counterclockwise.



## Step 9



- Remove the two gold coaxial connectors by pulling gently at the base with tweezers.

To reassemble your device, follow these instructions in reverse order.