



iPhone 6s Plus Speaker Replacement

Prerequisite guide only! Speaker module...

Written By: Arthur Shi



INTRODUCTION

Prerequisite guide only! Speaker module replacement for the iPhone 6s Plus. Updated version which contains photos that have the logic board intact.



TOOLS:

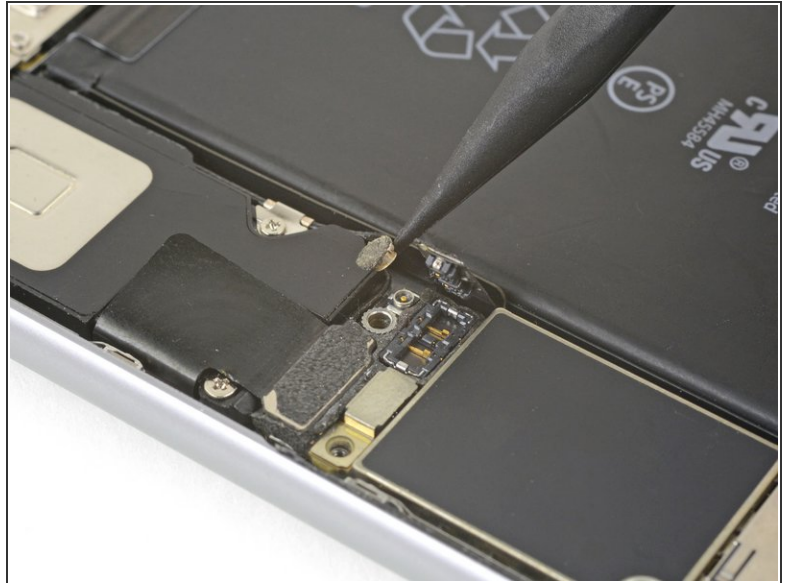
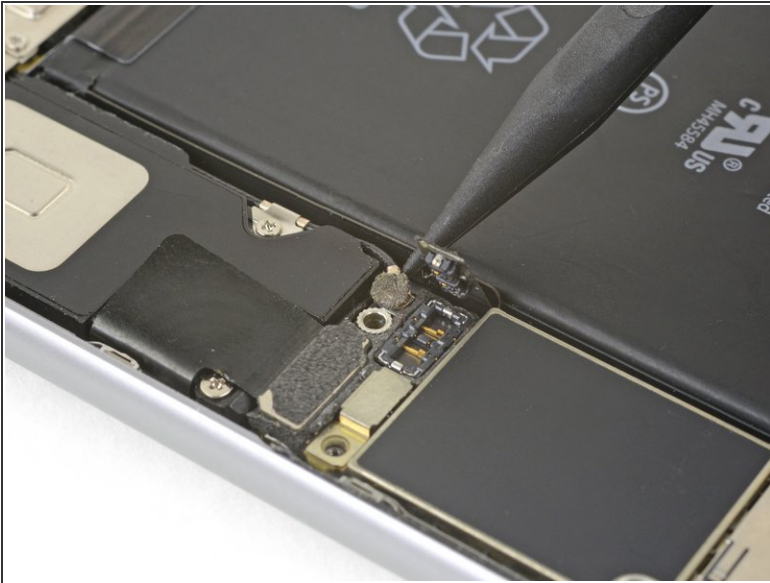
- [Spudger](#) (1)
- [Phillips #000 Screwdriver](#) (1)



PARTS:

- [iPhone 6s Plus Loudspeaker](#) (1)
- [iPhone 6s Plus Antenna Clip](#) (1)

Step 1 — Speaker



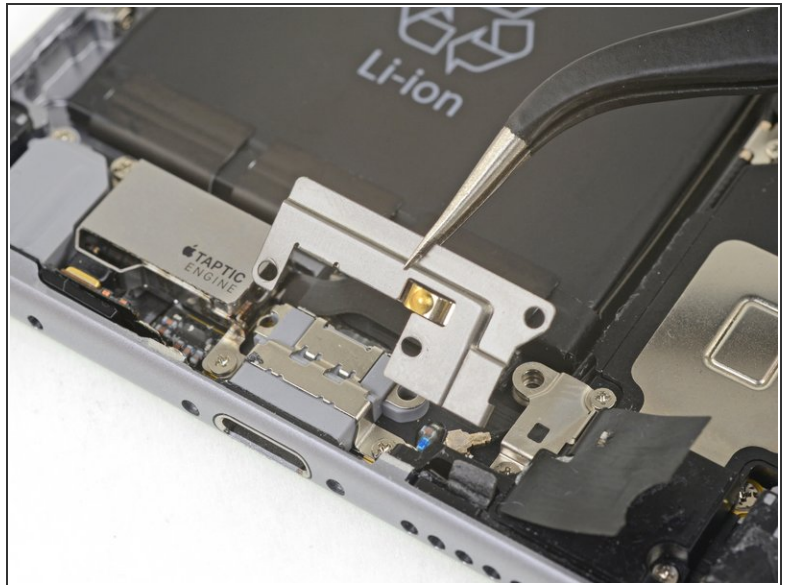
- Use the point of a spudger to pry up and disconnect the antenna cable from the bottom of the logic board.

Step 2



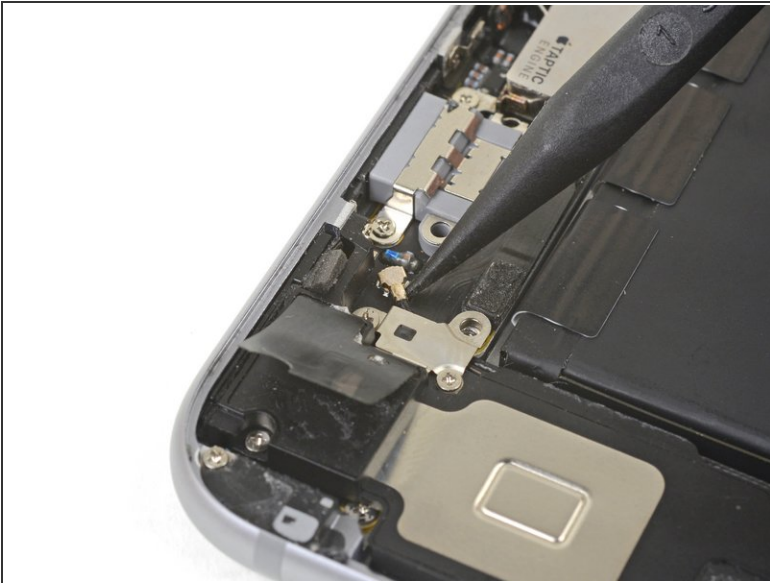
- Use the point of a spudger to pry up and disconnect the Lightning connector cable from the logic board.

Step 3



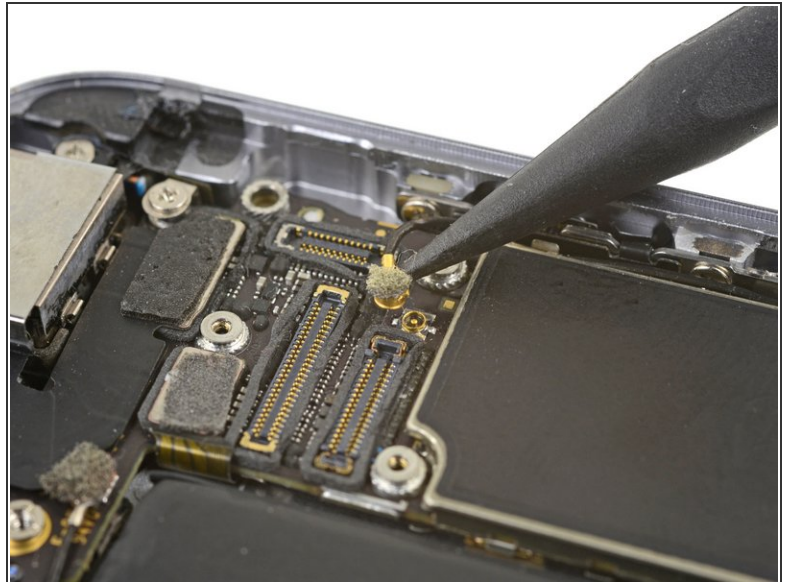
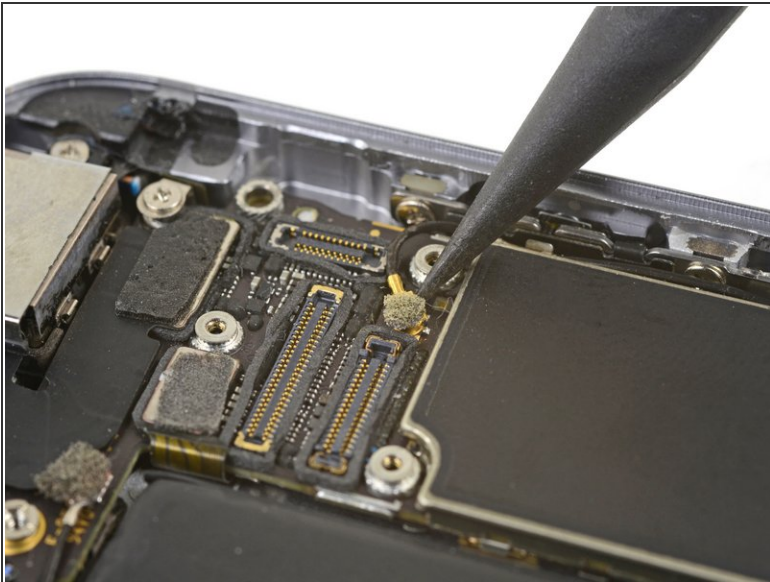
- Remove the three Phillips screws securing the Lightning connector bracket:
 - Two 3.5 mm screws
 - One 2.7 mm screw
- Remove the bracket.

Step 4



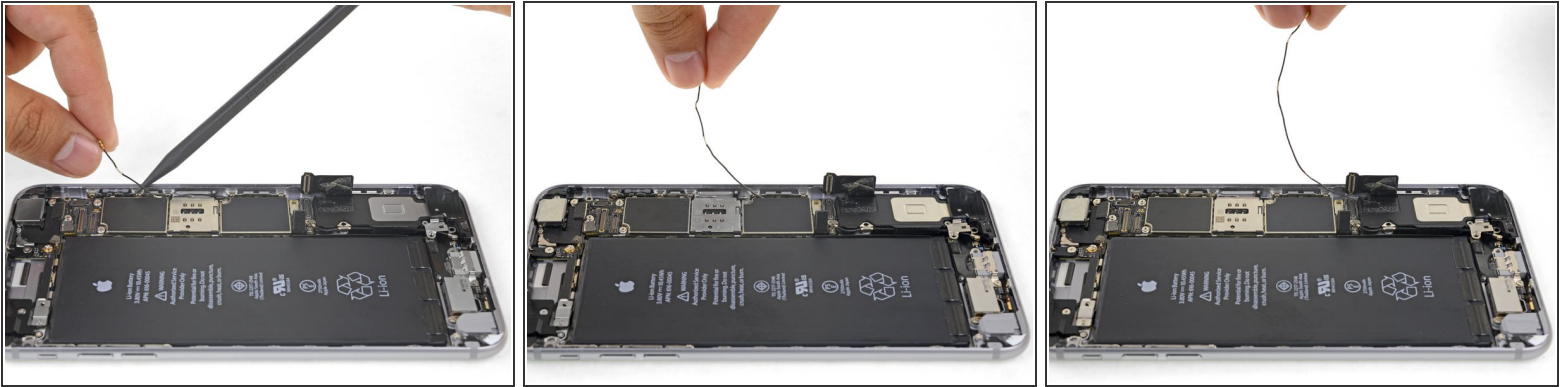
- Use the point of a spudger to pry up and disconnect the antenna cable from the Lightning connector assembly.

Step 5



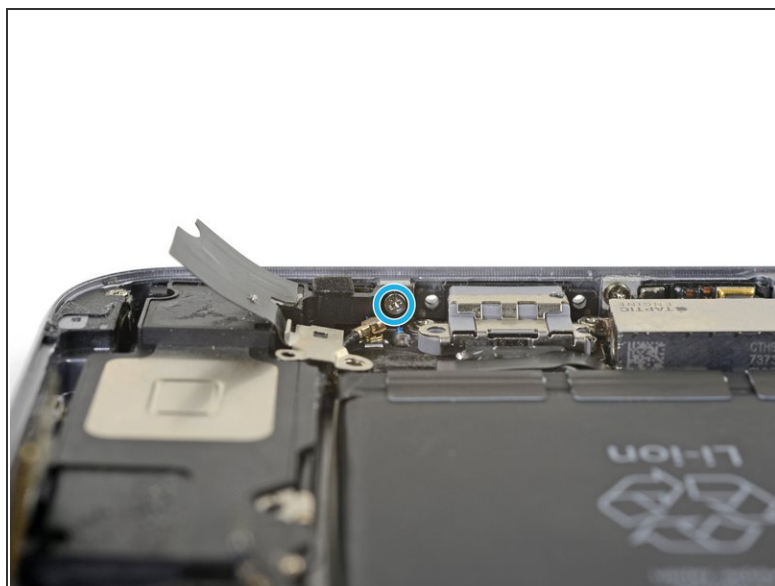
- Use the point of a spudger to pry up and disconnect the antenna cable from the top of the logic board.

Step 6



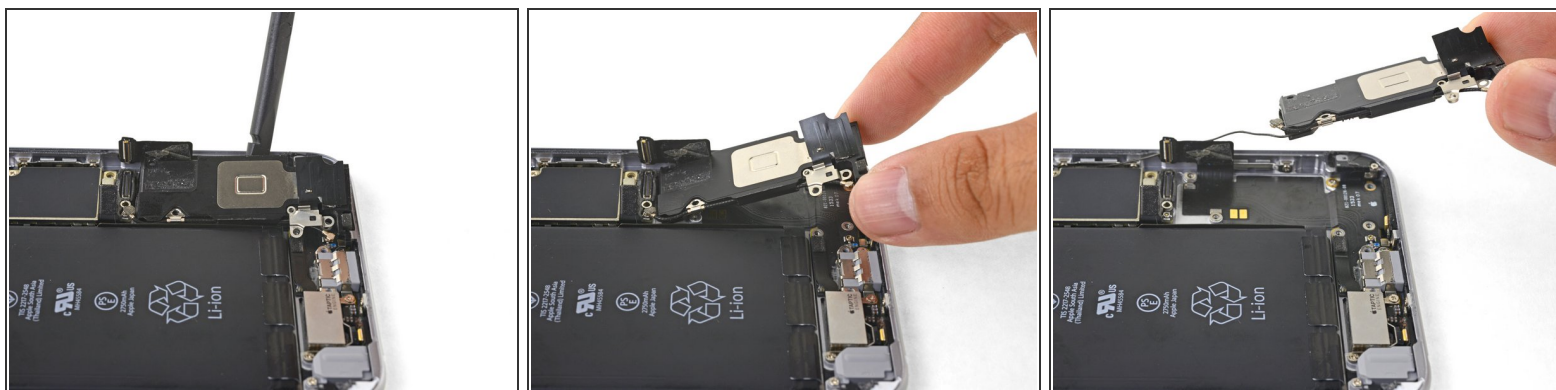
- Carefully lift the antenna cable and de-route it from the edge of the phone. Use the point of a spudger to help lift the cable free it from the retaining clips.
- ⓘ If the cable does not have enough room to lift up, loosen [this Phillips screw](#) securing the logic board so that the board can give more wiggle room.
 - ✦ Be sure to re-tighten this screw during re-installation.
- ⓘ If the cable snags near the SIM reader, it's likely caught on the SIM tray ejection mechanism. Use the point of a spudger to slide the plastic rod out of the way.
- ✦ During re-installation, be sure to route the antenna cable [underneath the logic board corner](#).
- ✦ During reassembly, you can also re-insert the SIM card tray after re-routing the antenna cable.
- ⚠ If you feel any resistance, **stop** and make sure that the tray isn't snagging the antenna cable.

Step 7



- Remove the six Phillips screws securing the speaker to the rear case:
 - One 2.5 mm screw
 - Two 2.7 mm screws
 - One 1.5 mm screw
 - One 1.7 mm screw
 - One 2.6 mm screw securing the speaker to the bottom edge of the rear case.

Step 8



- Insert the flat end of a spudger between the long edge of the speaker module and the case wall.
- Pry gently to loosen the speaker module.
- Once the module is loose, lift and remove the speaker module and the attached antenna cable from the phone.

To reassemble your device, follow these instructions in reverse order.