



Toyota bB (first gen) Oil and filter change

Change the oil on a first gen Toyota bB with the 1.3 L 2NZ-FE I4 engine... (same engine as to Toyota Yaris/Echo/Vitz)

Written By: Gaspard Leon





TOOLS:

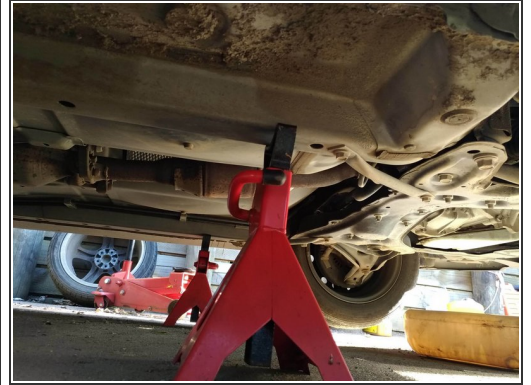
- [14mm Wrench or socket](#) (1)
- [Oil filter pliers or socket](#) (1)
- [Cardboard or Shop creeper](#) (1)
- [Funnel](#) (1)
- [Shop Towels or Rags](#) (1)
- [Hydraulic Floor Jack](#) (1)
- [Jack Stands](#) (1)
- [Oil Drain Pan](#) (1)



PARTS:

- [Oil Filter](#) (1)
- [Engine Oil](#) (1)

Step 1 — Lift the car



- This car has no easy lifting points, and a bodykit and low ground clearance makes lifting a bit harder
- I was able to come in from behind the front wheels at the sides and lift from the box section of the unibody as pictured
- The jack-stands I placed hard up against the jack and found a spot on the "frame-rails" (box section of unibody)

Step 2 — Get under the car



- I like to use cardboard, but a shop creeper would work too
- The oilpan and drain bolt are located at the right-front of the car

Step 3 — Identify the targets



- The oil filter is faced downwards and is just in front of the oil pan under the intake manifold
- You don't need to take off the plastic under-shield but if it's annoying you could

Step 4 — Drain the oil



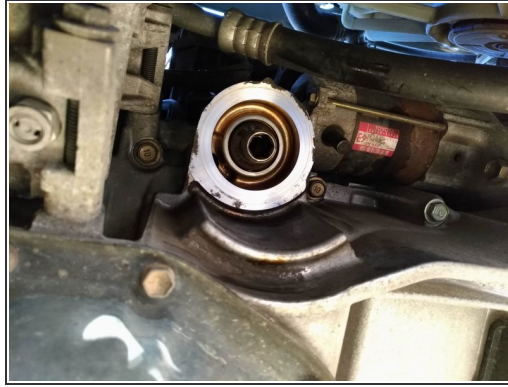
- The drain bolt on the 1.3L engine is a 14mm
- Re-position the pan as it drains - especially if it's a windy day

Step 5 — Remove old oil filter



- I like to use a set of oil-filter pliers but a correct oil filter socket would be a luxury, or a strap wrench or other tool would be fine
- Make SURE the gasket comes off with the old filter and is NOT stuck on the block

Step 6 — Install new filter and drain bolt



- Oil up your new filter's gasket
- Since the oil filter is facing down, you can pre-fill the oil filter if you like, it can be messy if you drop it though!
- Clean the mating surface with rags before installing the new filter
- Tighten the filter 3/4 turn after it touches the block
- Remember to also tighten the oil drain bolt, and clean around each area with rags so you can spot leaks easier

Step 7 — Lower the car



- Remove cardboard/creeper and any tools
- Lift each side and remove the jack stand
- Lower the car which will level it for filling

Step 8 — Fill the car with oil



- The fill cap and dipstick are located at the front-right of the car (left side of engine bay)
- I used 10W-40 full synthetic oil, and the car accepted around 3.8L
- I like to use a stubby wide-mouth funnel
- Sorry I didn't take any photos of this step as it was the end of a long day of 3x cars servicing

Step 9 — Check for leaks



- Run the car for 15 seconds or so to fill the filter and oil galleries
- Turn off the car and check for leaks underneath
- Check the level again with the dipstick and top up as required

Servicing Done!