



TiVo Bolt Hard Drive Replacement

How to open up your TiVo Bolt and replace/Upgrade the Hard Drive.

Written By: Jacob



INTRODUCTION

There are currently two methods being used to upgrade/replace TiVo Bolt HDDs. One is replacing the internal 2.5" drive, the other is using a 3.5" drive by drilling a hole in the casing and using a sata extension cable and providing an external power source as well as a separate housing. TiVos are particular about what type of HDD is used. The parts section included the most popular choices for internal HDD replacement options. This Guide will cover replacing the internal 2.5" HDD with another 2.5" HDD. You can use a drive greater than 3tb however the TiVo box will not auto format it. This Guide will not cover how to format a HDD for use in a TiVo if it is over 3tb.



TOOLS:

- [TR9 Torx Security Screwdriver](#) (1)

A T9 worked for me however it seems some models use T10.

- [iFixit Opening Picks set of 6](#) (1)

Not necessary but makes it easy to undo the plastic clips.

- [Spludger](#) (1)

Any small flat tool would work, used to cut through adhesive keeping plastic cable routing clips to HDD.



PARTS:

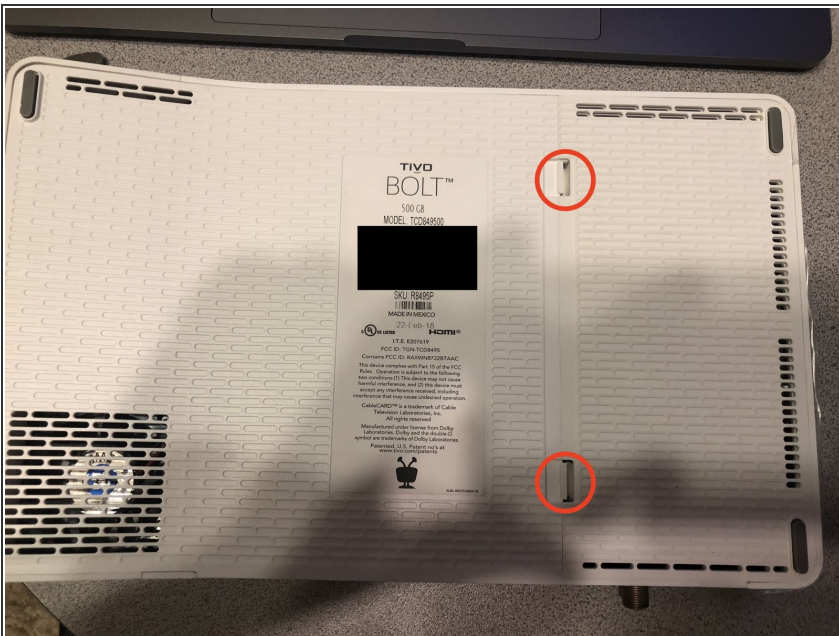
- [Toshiba 3TB \(MQ03ABB300\)](#) (1)
- [2TB WD Blue \(WD20NPVZ\)](#) (1)
- [3TB WD Blue \(WD30NPRZ --00YRMT0\)](#) (1)

Step 1 — Remove the Torx Screw on the Back



- ❗ This screw is a different length than all the other screws.

Step 2 — Remove Cable Card cover



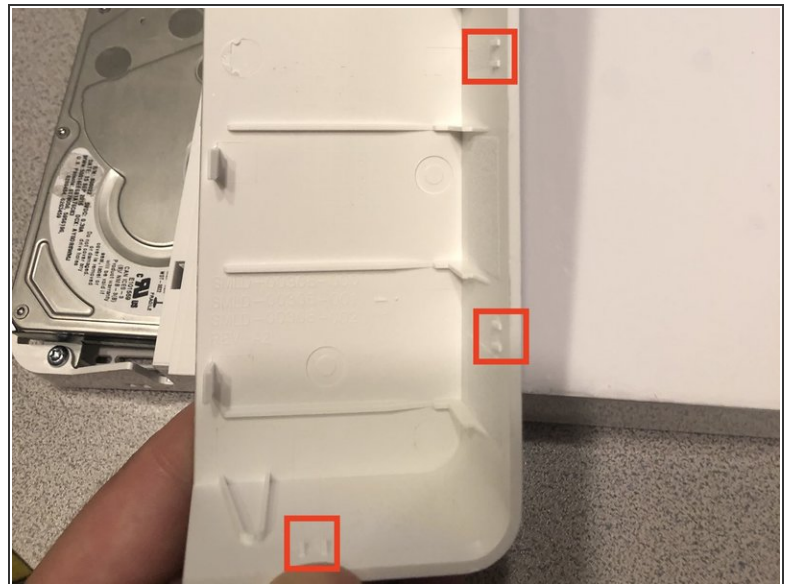
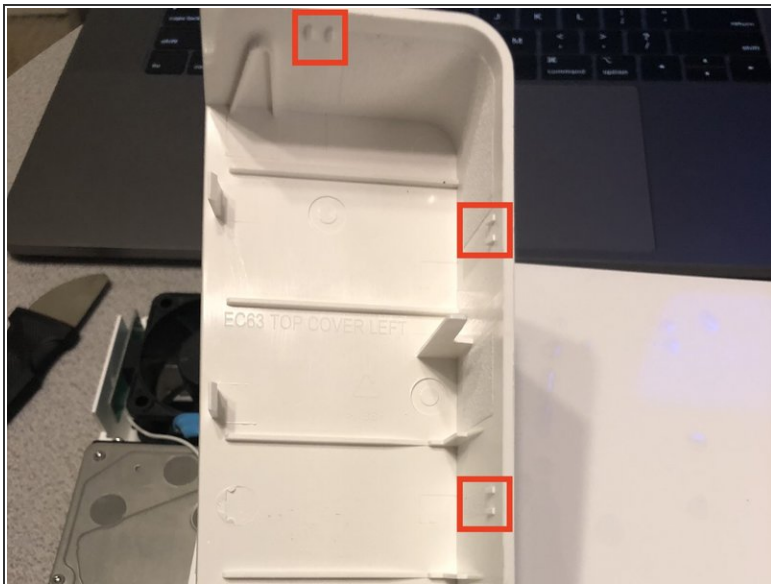
- Undo the clips to lift up the Cable card slot cover

Step 3 — Undo 2 Screws holding the case to the board/base



⚠ Do not attempt to remove the housing yet. Still 3 more screws and plastic clips holding it in place

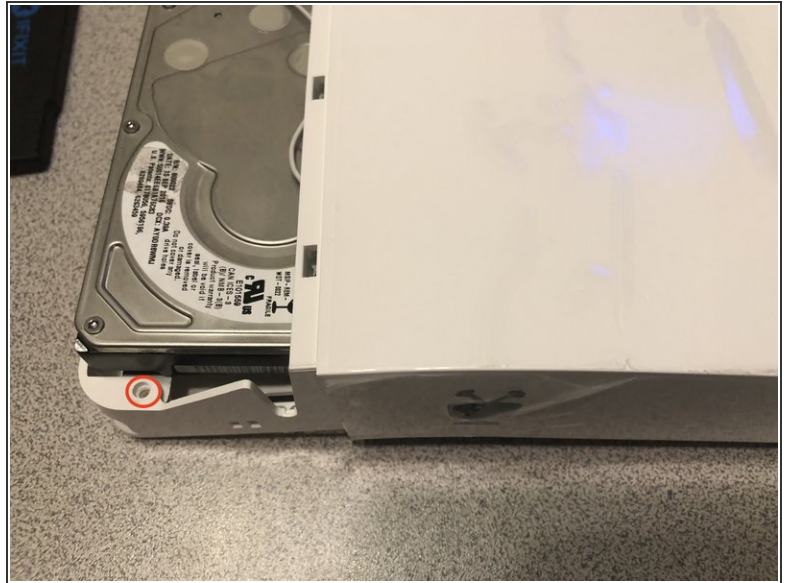
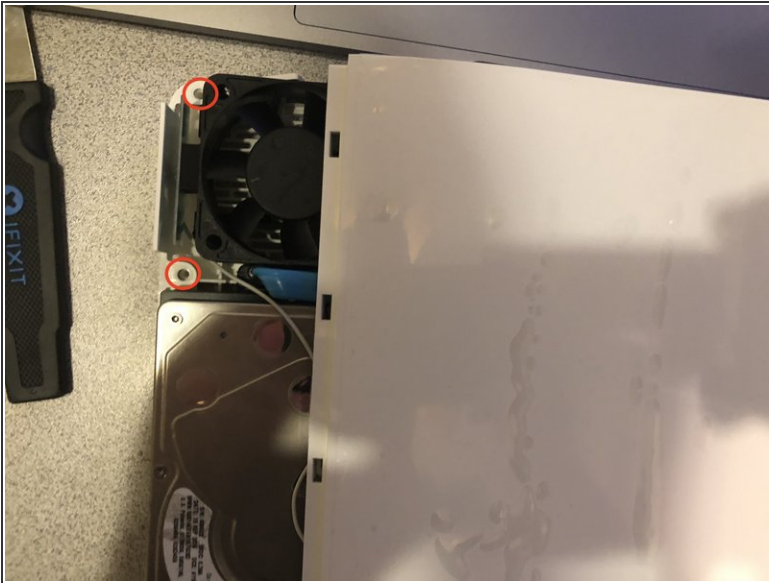
Step 4 — Remove the HDD Cover




- This shows the placement of the clips so you know where to place your plastic pics.

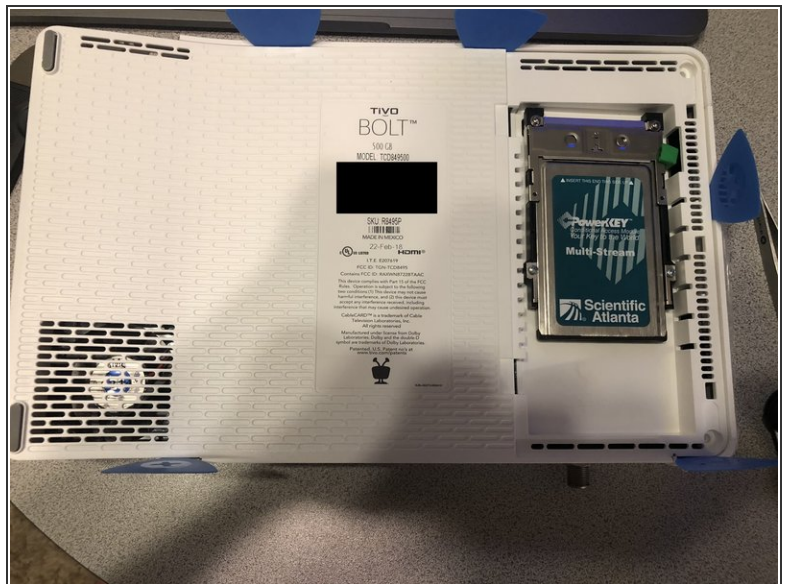
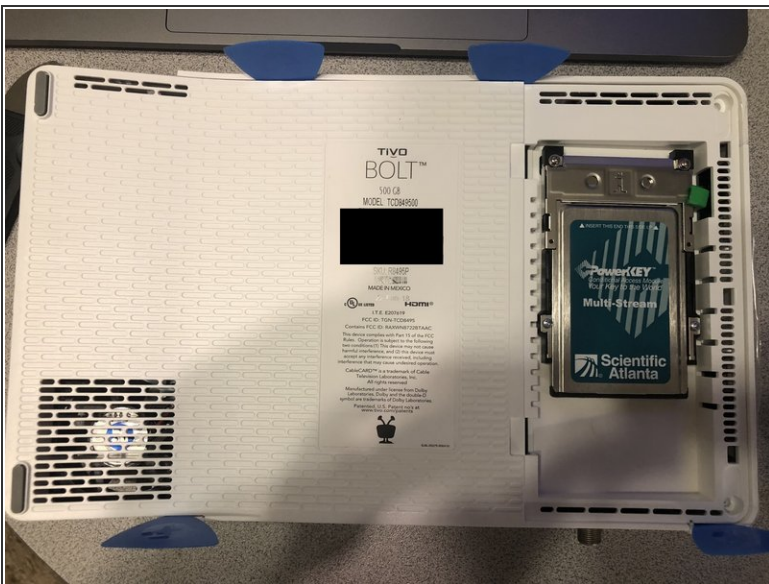
⚠ Make sure to left this cover straight up when removing as you can see on the left side it has prongs that slide into the other part of the plastic housing.

Step 5 — Remove 3 Remaining Screws Holding Case to Board



 Case is still clipped in so do not attempt to remove the case yet

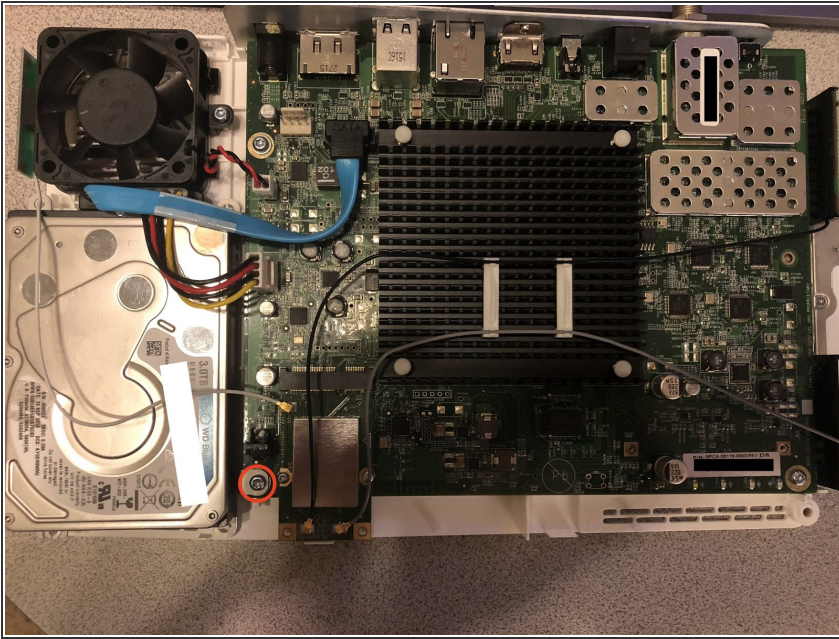
Step 6 — Remove the Plastic Housing



- Plastic Pic placement shows where the clips are.

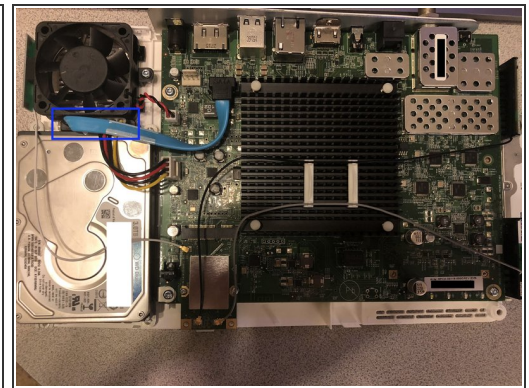
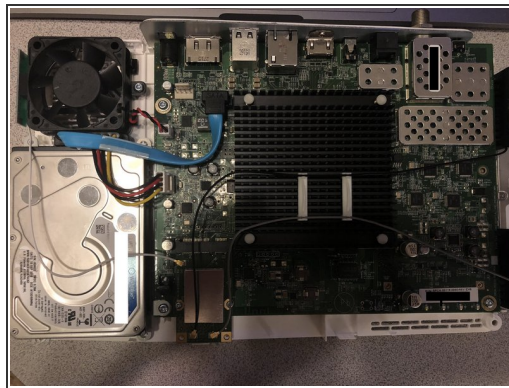
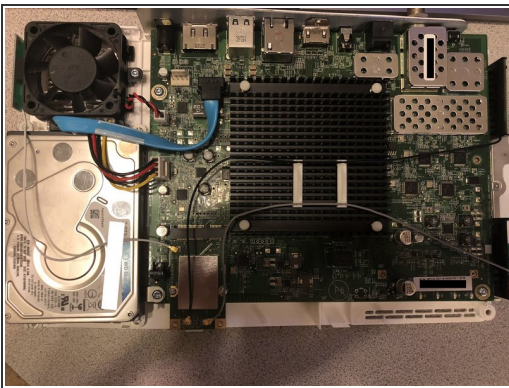
 I found it easy to use a 5th pic on the right to help separate the housing from the board

Step 7 — Remove Screw holding HDD Tray to the Board



- Once you undo this screw you can unplug the harddrive and left up the HDD to separate the HDD and tray from the Board
- Then undo the screws holding the tray to the HDD. Put the Tray on you new HDD and screw it in.

Step 8 — Final Pictures of the board with the new HDD



i Afterwards I decided to go ahead and add the plastic routing clips on, which are not shown in the picture.

To reassemble your device, follow these instructions in reverse order.