



Opening the Grinder

Opening the Grinder in a Siemens Surpresso Compact

Written By: VauWeh



INTRODUCTION

Opening the grinder in a Siemens Surpresso Compact.



TOOLS:

- [T10 Torx Screwdriver](#) (1)
- [Flathead Screwdriver](#) (1)





PARTS:

- [New Item](#) (1)

Step 1 — Opening the Siemens Surpresso Compact



 **Unplug your coffee maker!**

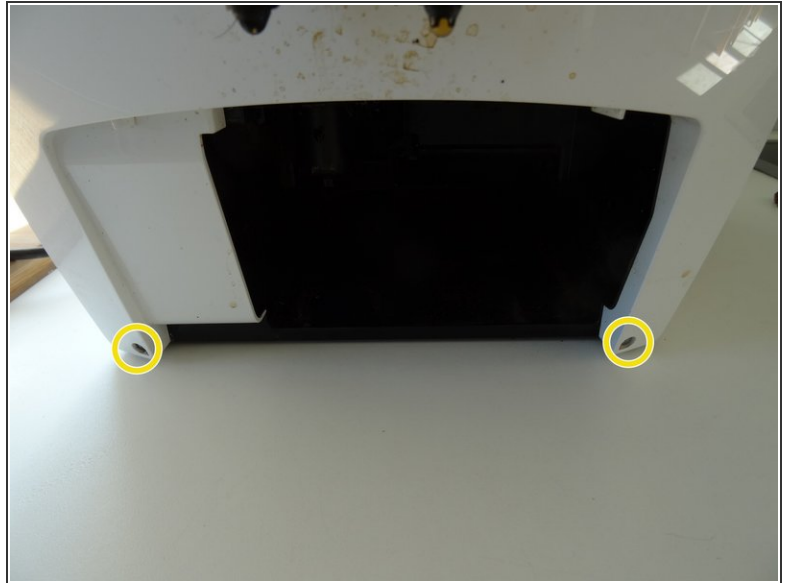
- Remove the water container, the brew group and the drip tray with pomace container.
- Using a spoon, remove as much of the coffee beans as possible from the coffee bean container.
-  Depending on the model, additional sensors with cables may be installed on the top and side panels. You have to remove these before you can completely remove the housing parts.

Step 2



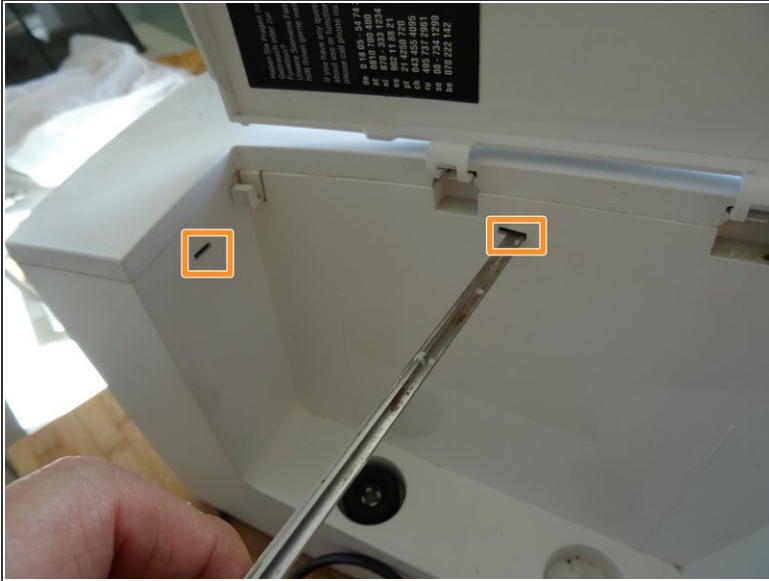
- Remove the two Torx T10 screws on the top.

Step 3



- Remove seven T10 Torx screws on the back.
- The two screws at the bottom of the front can remain.

Step 4



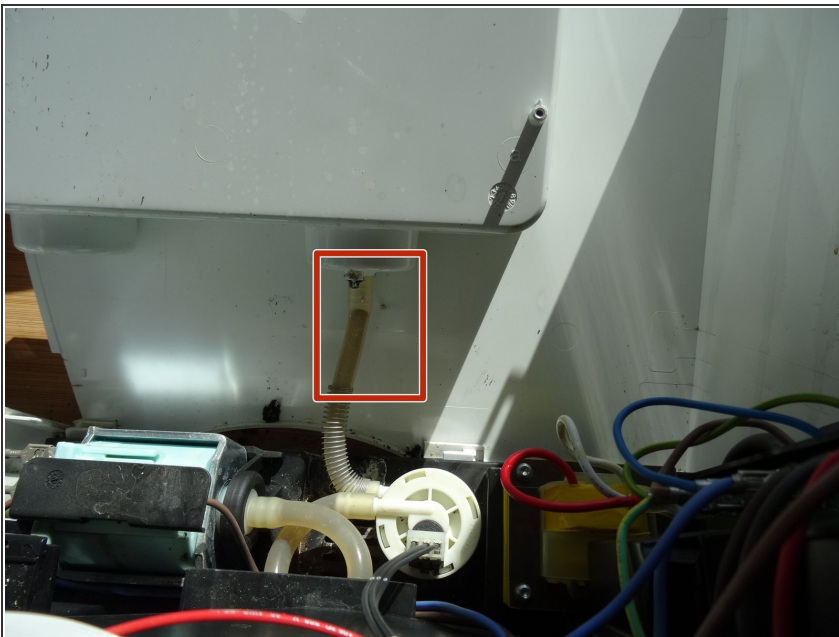
- Press with a flat-head screwdriver into the openings on the side with the water tank. This releases the latches on the top.
- Press the flat-head screwdriver into the opening on the side with the brew group. This will release the last notch on the top.
- Lift the top off.
- On some models, a cable leads to the sensor on the powder tray. Unplug the connector on this cable first.

Step 5



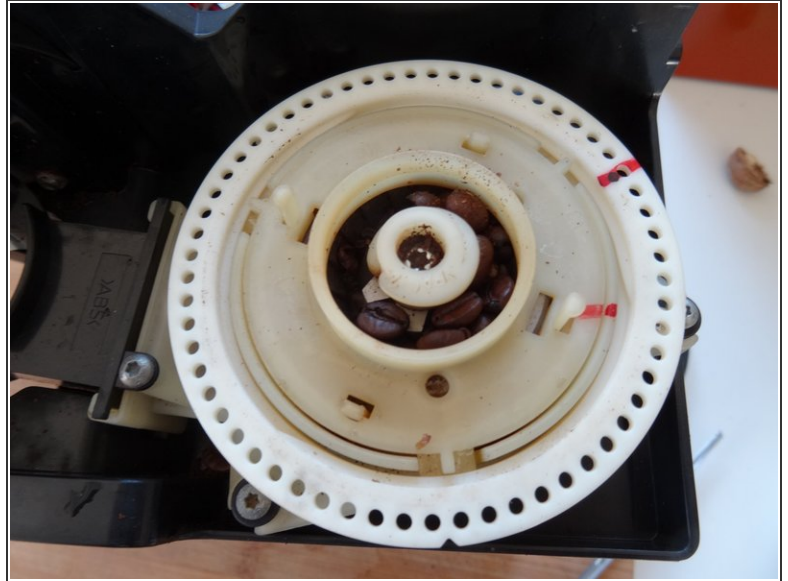
- Slide the side section of the brewing unit about 2 cm to the rear. This sometimes gets stuck and may require some force to remove.
- Remove the two tabs from the power switch.
- Take off the side panel with the brew group.

Step 6



- Do the same with the panel on the other side.
- To remove the water tank hose simply pull it of the pump.
- Remove the side panel.

Step 7 — Opening the Grinder



- The grinder is situated on the top right rearside of the device. The adjuster and the outer ring can just be taken off, but this is only necessary if the grinder has to be completely replaced. Be careful and do not use excessive force.
- ☑ Beyond the white ring with the holes there is a small springloaded ball (3.2 mm diameter). It ensures that the ring clicks into place, hence the click. Be careful, it can fall out and get lost.
- The following pictures show a grinder of a Jura and there are slight differences. But since the grinder is the same, the repair is basically the same.

To reassemble your device, follow these instructions in reverse order.