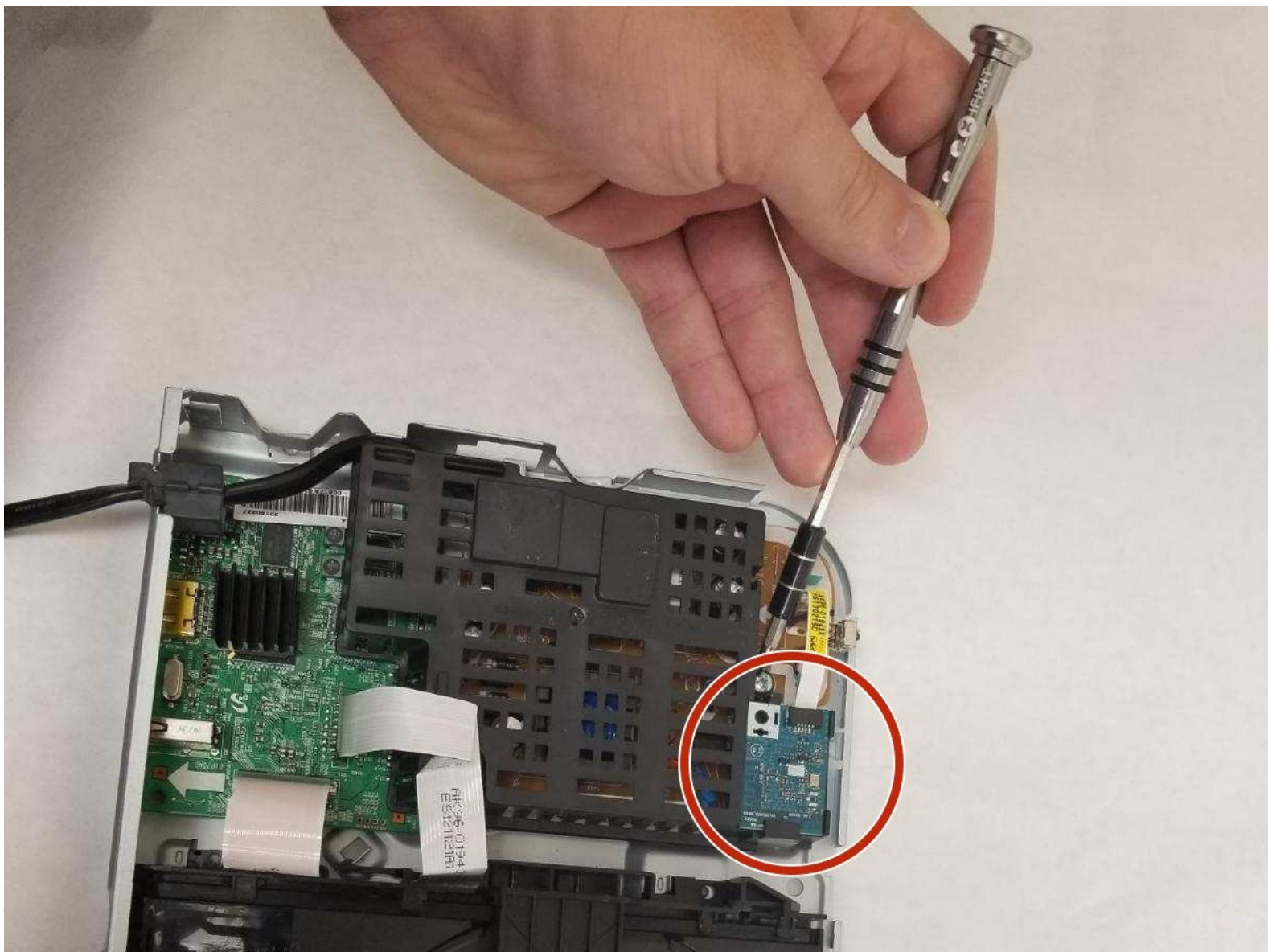




Samsung BD-E5400 Wi-Fi Card Replacement

If you are having issues connecting your Samsung BD-E5400 to Wi-Fi, you may want to replace your Wi-Fi card.

Written By: Cameron Herring



INTRODUCTION

If you are having difficulty connecting you Samsung BD-E5400 to Wi-Fi, a likely culprit could be a faulty wireless card that needs replaced. This guide will show you how to replace your wireless card so you can get back to binge-watching your favorite shows!



TOOLS:

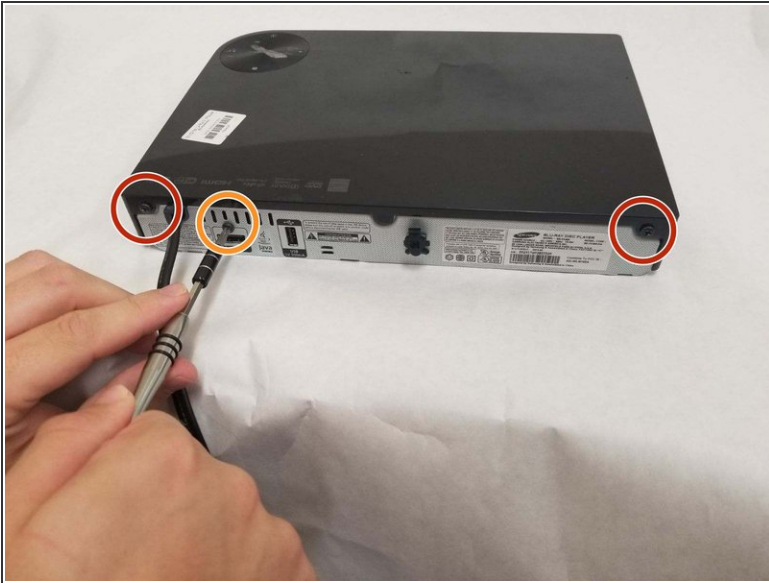
- [Phillips #1 Screwdriver](#) (1)



PARTS:

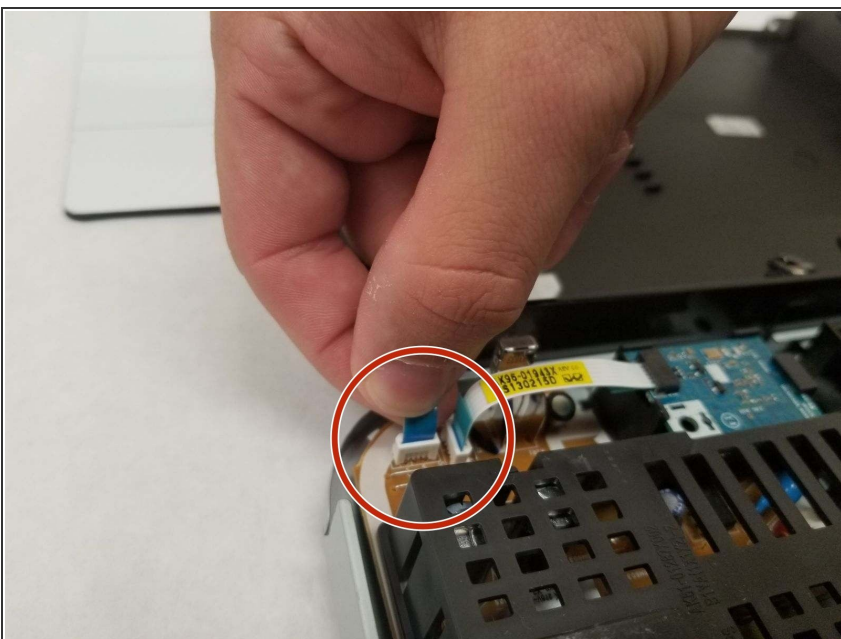
- [Wi-Fi Card](#) (1)

Step 1 — Outer Cover



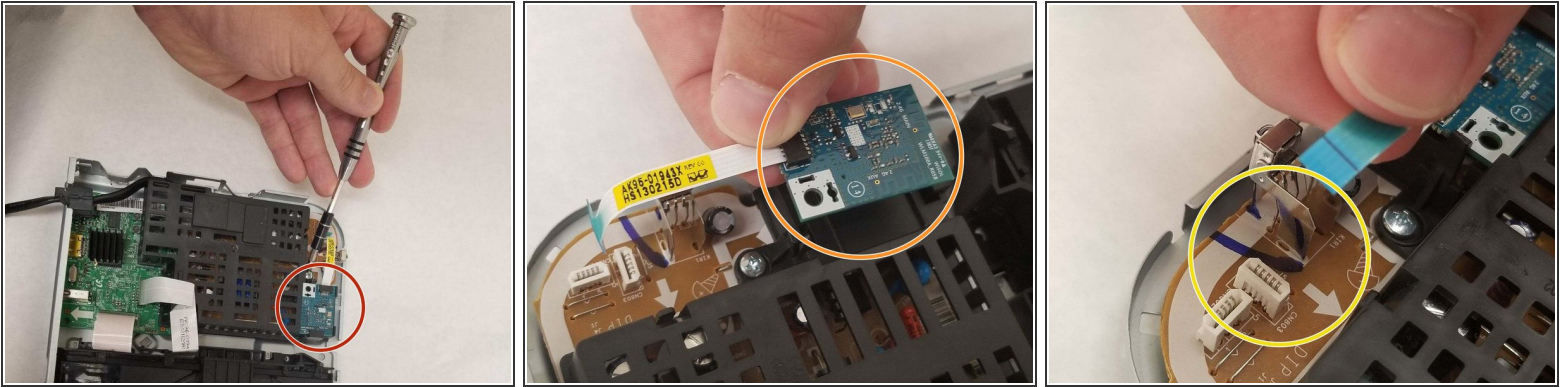
- Remove the two 10mm Phillips #1 screws.
- Remove the one 8 mm Phillips #1 screw.
- Carefully lift up the cover and lay back, to ensure that you do not damage the attached cable.

Step 2



- Unplug the small wiring bundle attaching the body of the device to the cover.
- Lay the cover aside.

Step 3 — WIFI Card



- The Wi-Fi card is the light blue component circled in red.
- Separate the body of the Wi-Fi card from the black plastic cover.
- Unplug the wires of the Wi-Fi card from the motherboard.

To reassemble your device, follow these instructions in reverse order.