



# Samsung Galaxy S4 Active Volume Button Replacement

Use this guide to replace a defective...

Written By: Geoff Wacker



# INTRODUCTION

Use this guide to replace a defective motherboard in your Samsung Galaxy S4 Active.

## TOOLS:

[iFixit Opening Tool](#) (1)

[Phillips #00 Screwdriver](#) (1)

[Spudger](#) (1)

## Step 1 — Rear Case



- Pry with a plastic opening tool, or your fingernail, in the divot to the left of the rear-facing camera, near the power button.
- Lift the rear case by the corner nearest the divot and remove it from the phone.

## Step 2 — MicroSD Card



- Use a plastic opening tool, or your fingernail, to press the microSD card slightly deeper into its slot until you hear a click.
- After the click, release the card and it will pop out of its slot.
- Remove the microSD card.

## Step 3 — Battery



- Insert a plastic opening tool, or your finger, into the notch of the battery compartment and lift the battery upward to remove it.

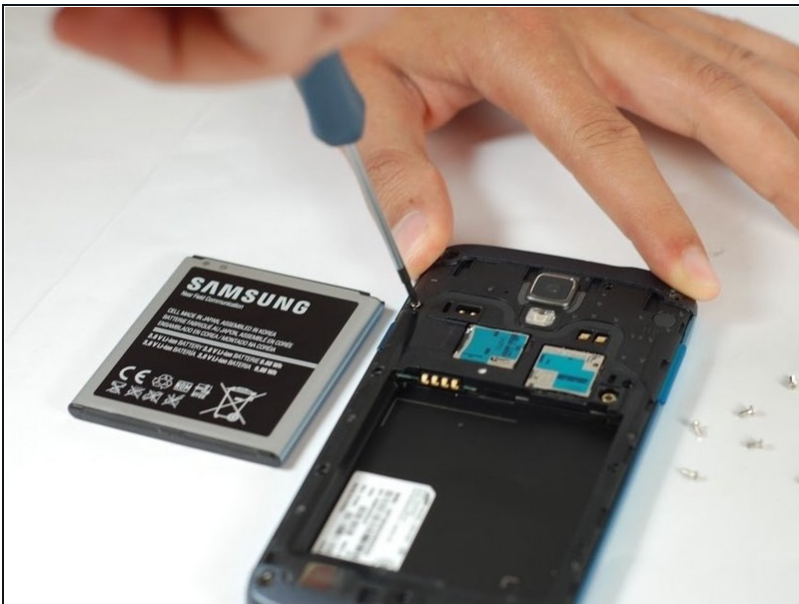


## Step 4 — SIM Card



- Use a plastic opening tool, or your fingernail, to press the SIM card slightly deeper into its slot until you hear a click.
- After the click, release the card and it will pop out of its slot.
- Remove the SIM card.

## Step 5 — Midframe



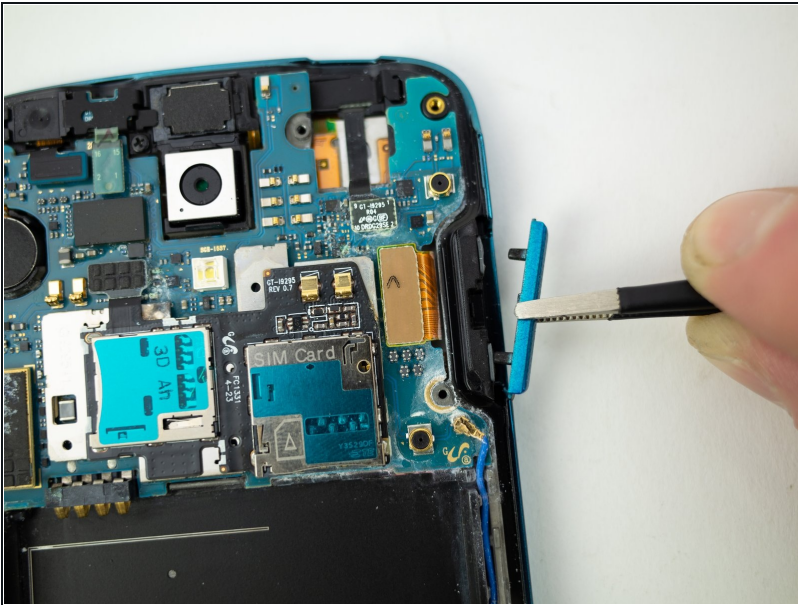
- Use the tip of a spudger to remove the four metallic pads located in each corner of the device.
- Using a Phillips #00 screwdriver, remove the 12 screws connecting the midframe to the device.

## Step 6



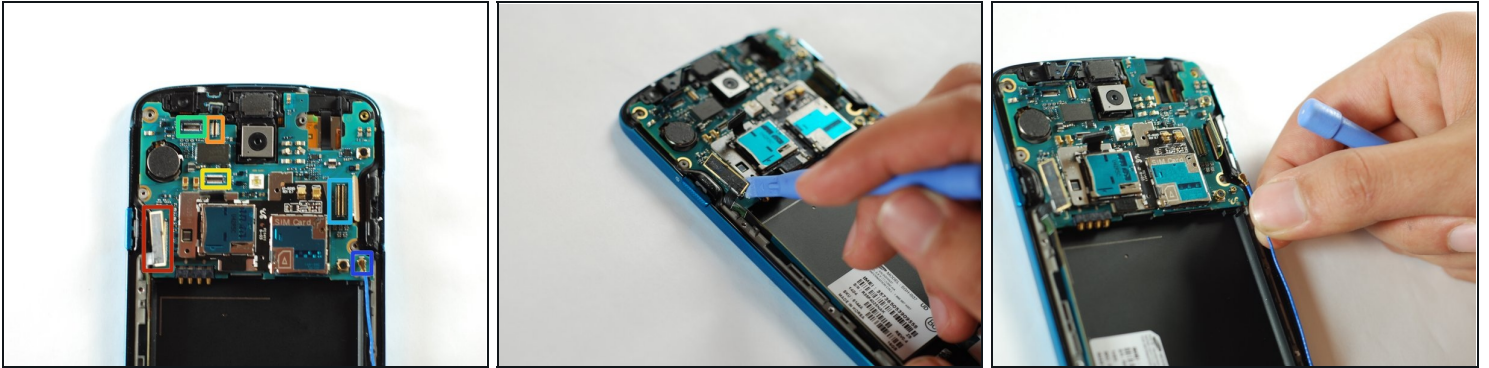
- Use the plastic opening tool to pry around the entire edge of the midframe now to release it from the front case.

## Step 7 — Volume Button



- Pull the volume button out with a pair of blunt nose [tweezers](#).

## Step 8



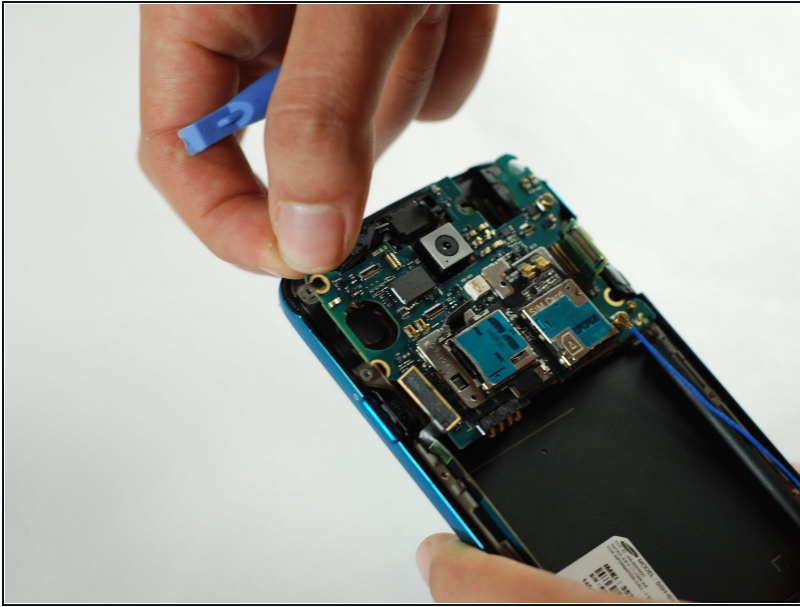
- Use the flat end of a plastic opening tool to disconnect the USB board connector.
- Disconnect the front-facing camera cable connector.
- Disconnect the earpiece speaker assembly cable connector.
- Disconnect the headphone jack assembly cable connector.
- Disconnect the display/digitizer cable connector.
- Disconnect the antenna cable connector.

## Step 9



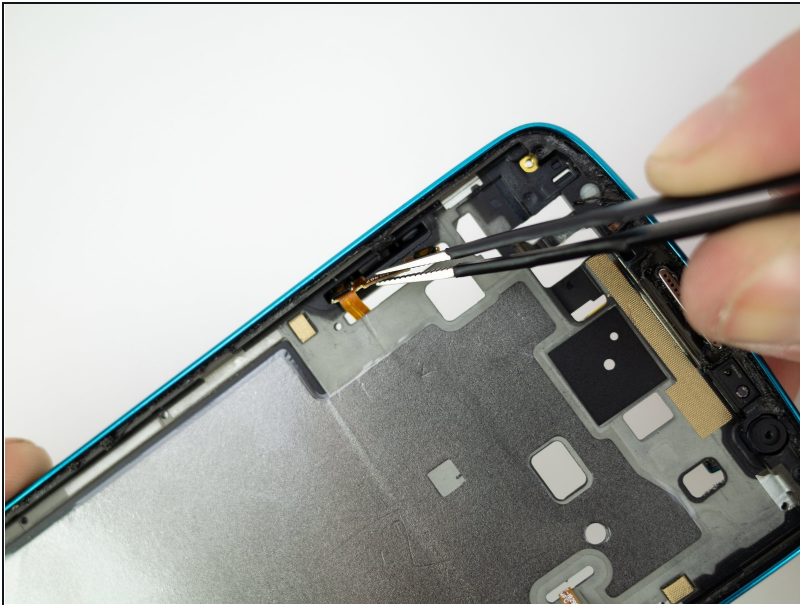
- Remove the single 2.4 mm Phillips #00 screw from the motherboard assembly.

## Step 10



- Remove the motherboard.

## Step 11



- Flip

---

To reassemble your device, follow these instructions in reverse order.