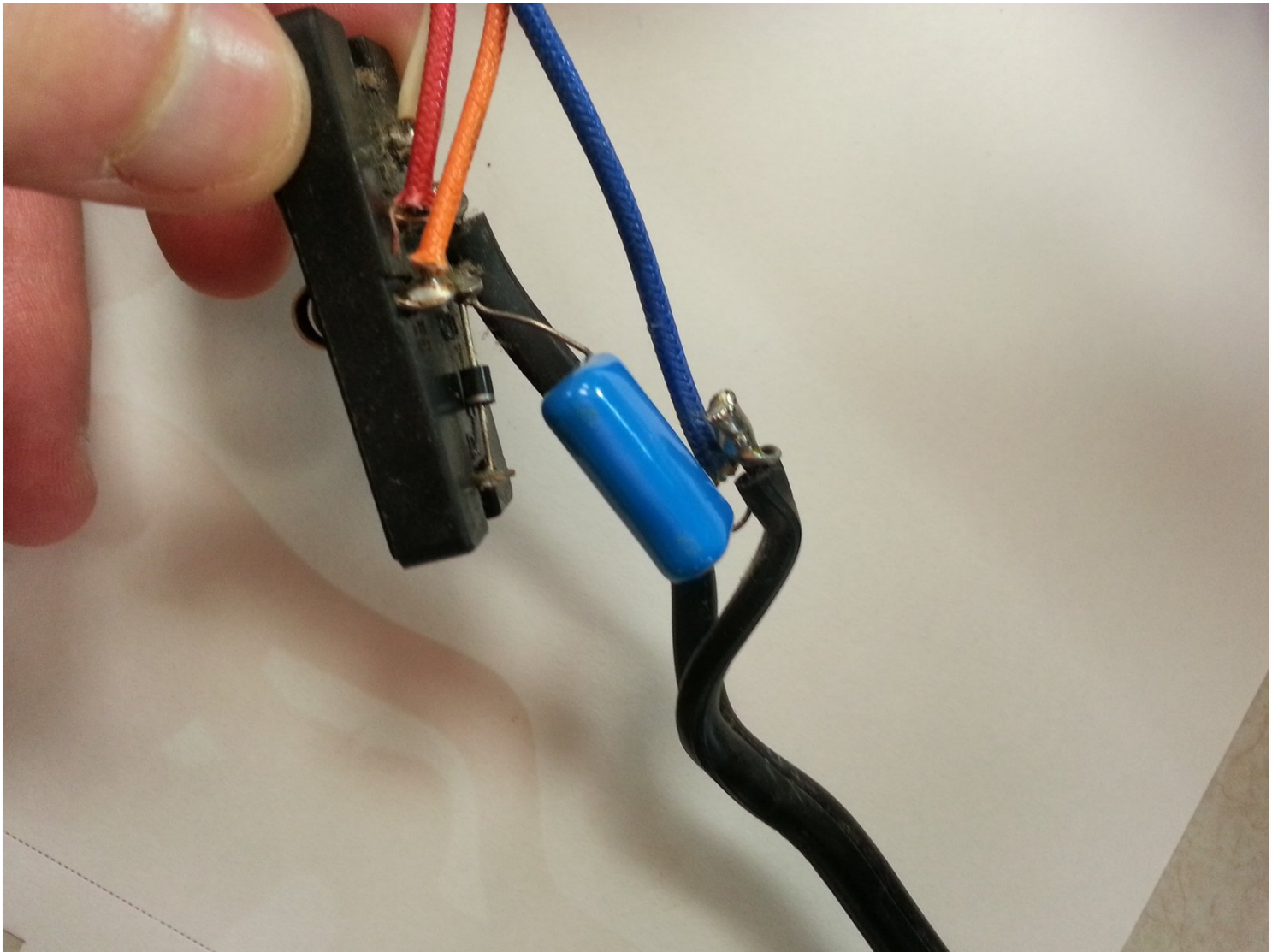




Hair Dryer Power Supply Replacement

If the power supply of your hair dryer is...

Written By: Mitch



INTRODUCTION

If the power supply of your hair dryer is noticeably damaged, or no longer providing power to your hair dryer, than use this guide to replace the power supply.

A damaged power supply can cause the hair dryer to stop working all together. It will not turn on when plugged into an outlet. Plug the hairdryer into a few different outlets to make sure that it is the power supply that is damaged, and not the power outlet that you are using.

In step 8, you are required to isolate the button switchboard after disassembling the hair dryer. There is a small component connected to the power cord, where the wires will need to be de-soldered using a wick and soldering iron.

Before starting this project, make sure the blow dryer is unplugged, and away from any wet surfaces.

TOOLS:

[Phillips #1 Screwdriver](#) (1)

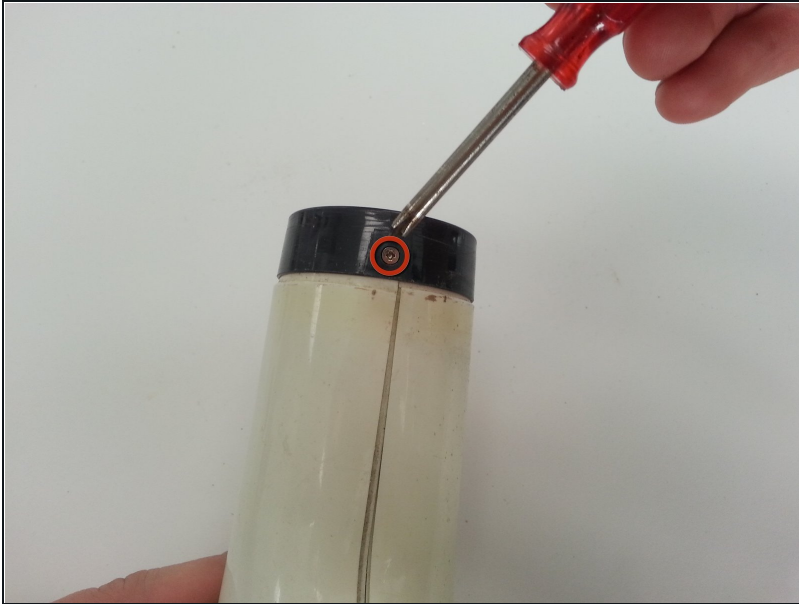
[Soldering Workstation](#) (1)

Step 1 — Nozzle



- Remove the black air concentrating nozzle by gently twisting and pulling the nozzle.
 - ⓘ If nozzle is not attached, skip to next step.

Step 2 — Grating



- Using a screwdriver, remove the screw located underneath the air concentrating nozzle. This screw attaches the hair dryer body to the hair dryer grating.

ⓘ For most hair dryers, use a Phillips #1 screwdriver. For hair dryers with smaller screws, consider using a Phillips #00 screwdriver.

Step 3



- Detach the hair dryer grating from the body by gently twisting the grating from side to side.

Step 4



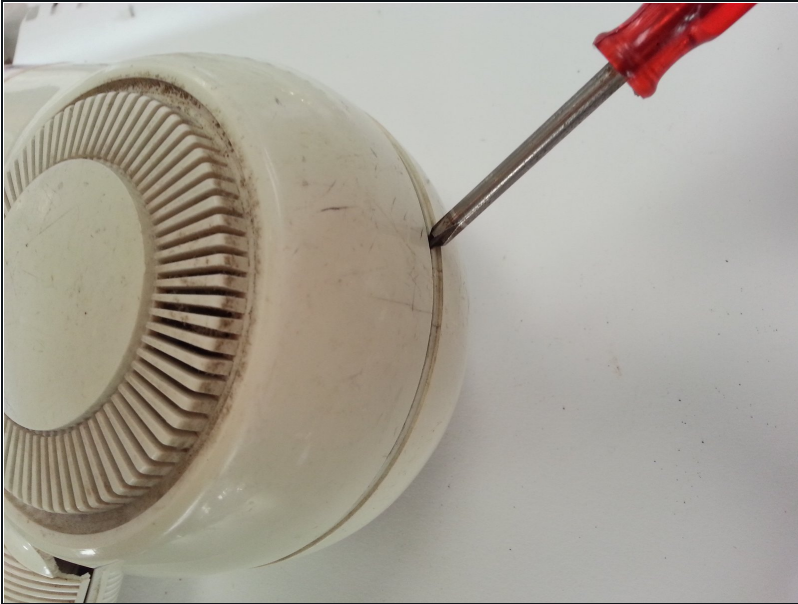
- Separate the hair dryer grating into the three pieces seen in the image.

Step 5 — Power Supply



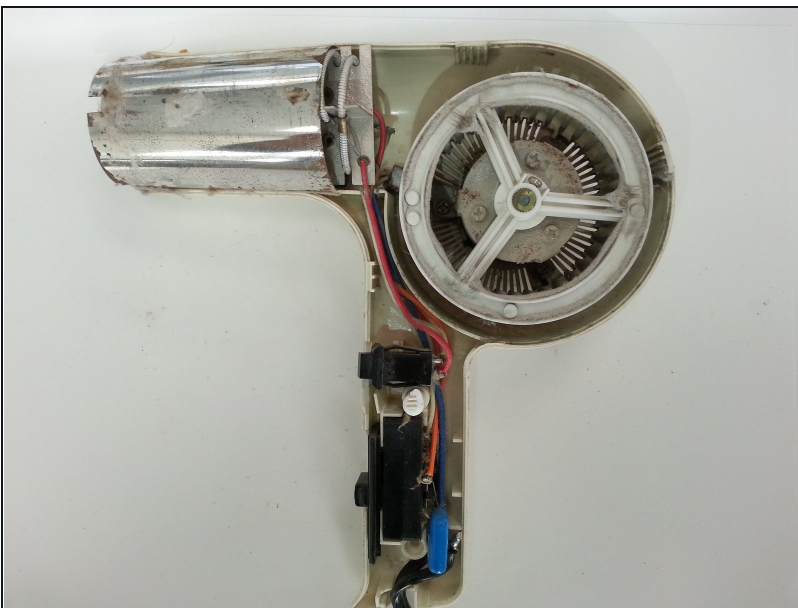
- Locate the screws on the handle and remove with a Phillips screwdriver

Step 6



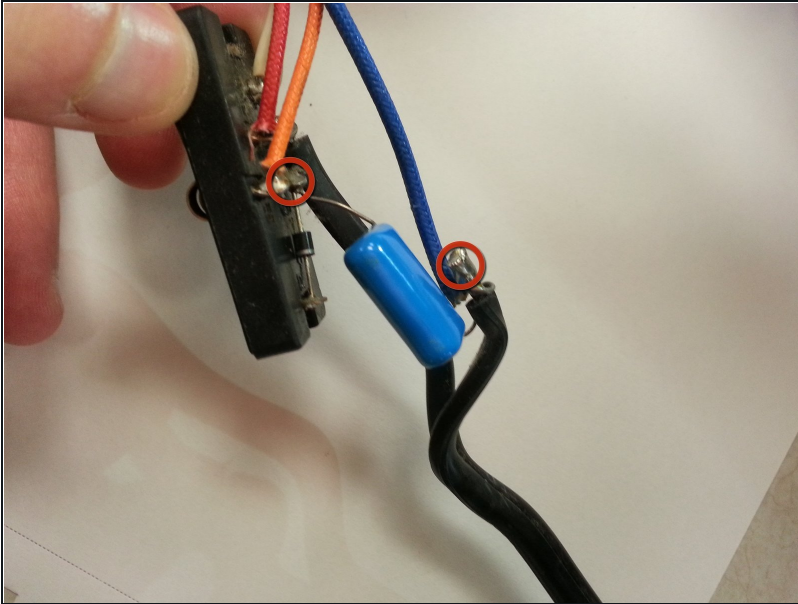
- Carefully separate the plastic case with Plastic Opening Tools

Step 7



- Your hairdryer should now be disassembled and you should easily be able to see the fan, motor, heating element cover, and internal wiring.

Step 8



- After disassembly and isolating the button switchboard, locate the small component that is directly connected to the power cord. Desolder the wires using a desoldering wick and a soldering iron. Refer to the **soldering page** below.
- [Soldering Skills](#)

To reassemble your device, follow these instructions in reverse order.