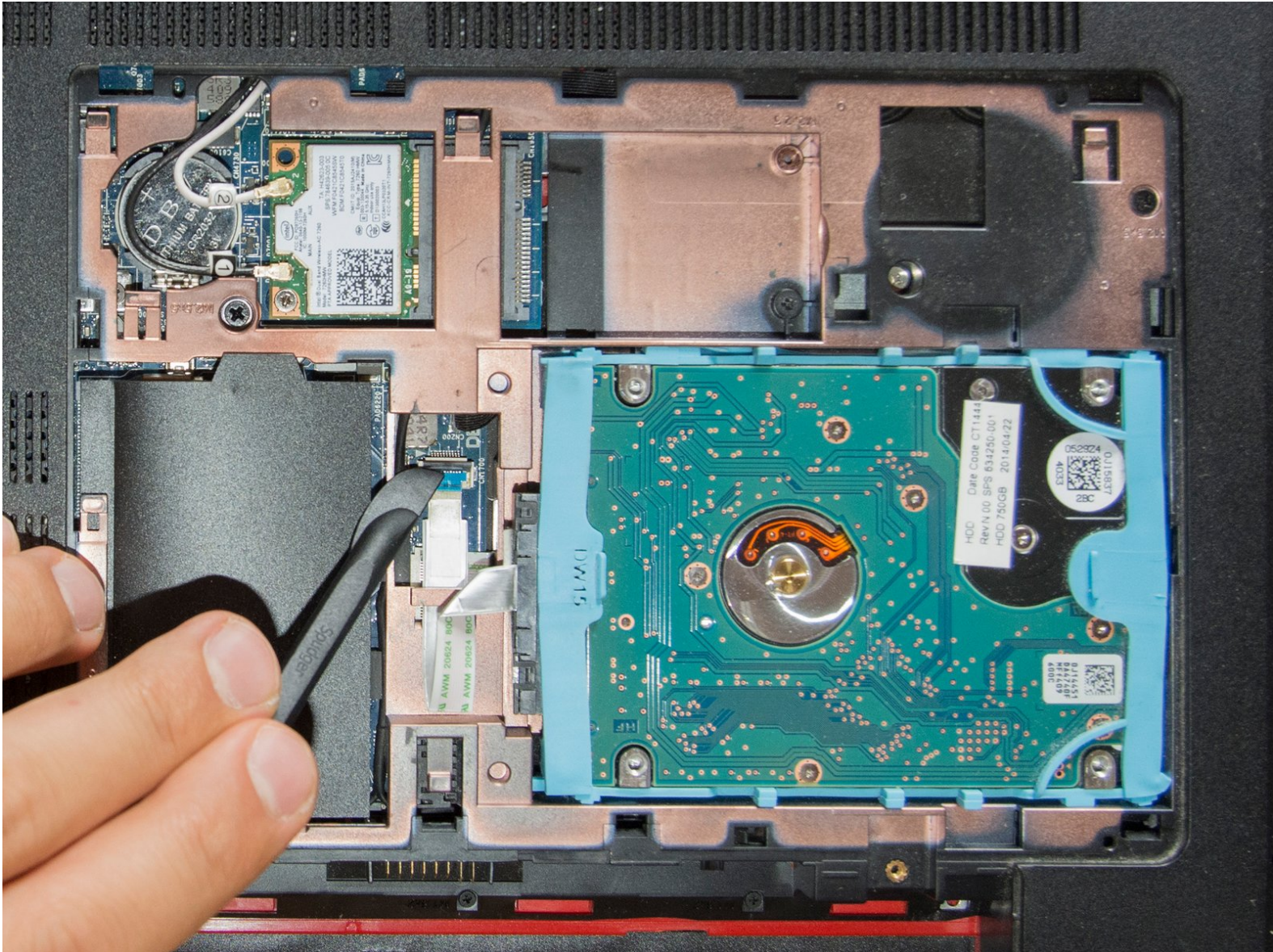




Hard disk disassembly

Written By: Roberto Bartolacci

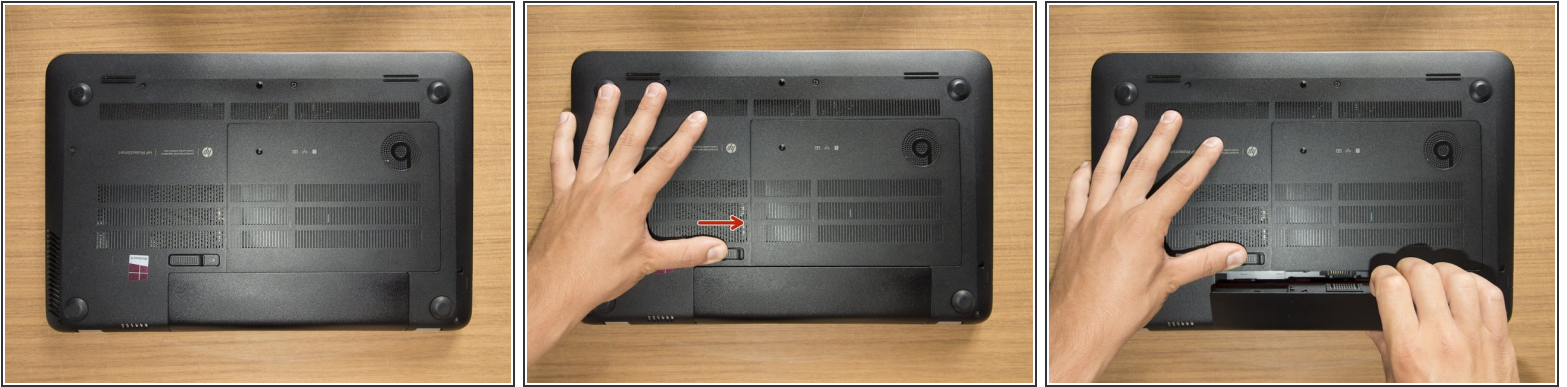




TOOLS:

- [Phillips #00 Screwdriver](#) (1)
- [iFixit Opening Tools](#) (1)
- [iFixit Opening Picks set of 6](#) (1)
- [Spudger](#) (1)
- [Tweezers](#) (1)
- [Anti-Static Wrist Band](#) (1)

Step 1 — Remove the battery



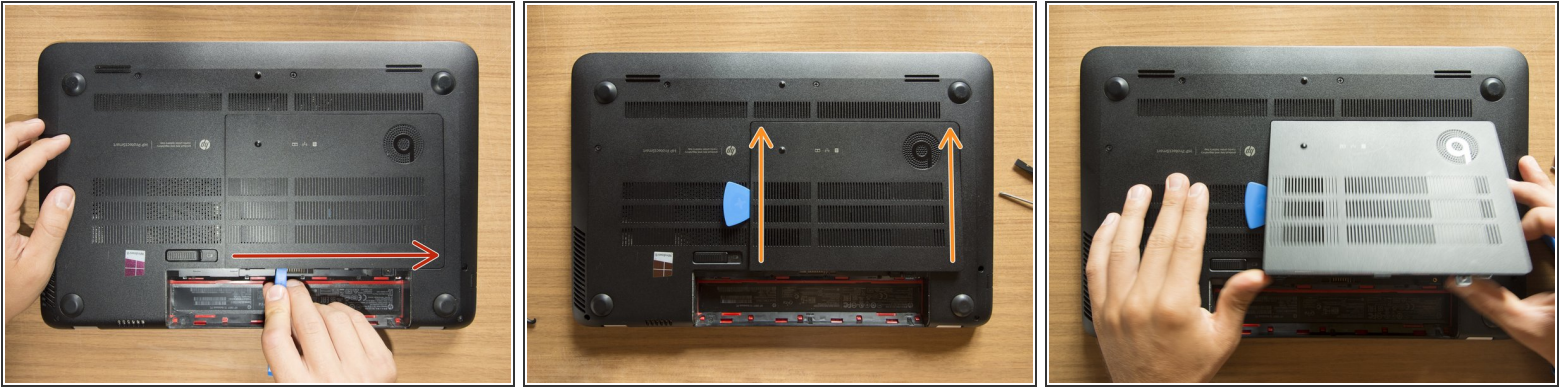
- Turn the laptop upside down and gently lay it down on a flat surface.
 - Slide the battery release latch to the right and the battery will pop up slightly.
 - While keeping the latch slid with one hand, grab the battery with the other hand and remove it by pivoting it upward.
- i** At this point some users would turn the laptop upside down once again and press the power button a couple of times. They say that this should help dissipating all of the remaining electricity around the device. Up to you :)

Step 2 — Remove the captive screw of the service door



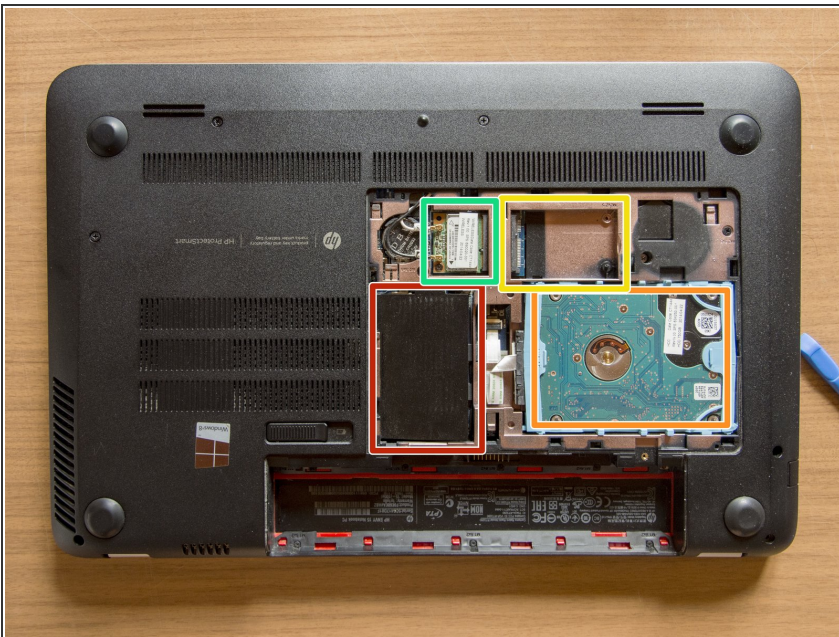
- Remove the Phillips PM2.0×4.0 screw using a PH#00 screwdriver.

Step 3 — Remove the service door



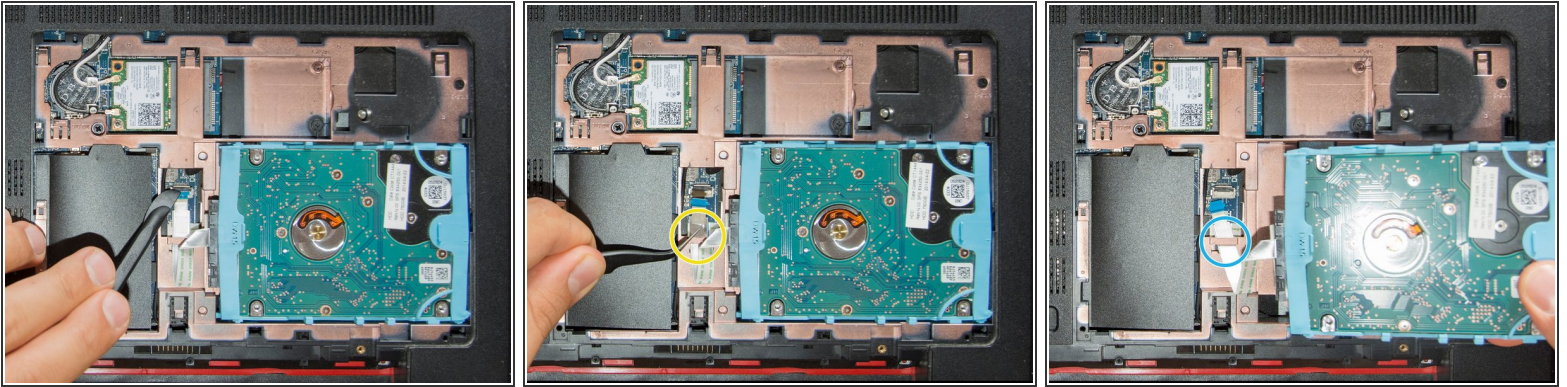
- With an opening tool pry off the tabs that secure the service door to the base enclosure. Start with the long edge.
- Continue along the short edges.
- Once you have pried the service door off as it is in pic#3, it will come out of the rear edge very easily.

Step 4 — Identify the components



- RAM memory modules
- HDD (Hard Disk Drive)
- mSATA SSD slot
- Wifi & BT module (Wireless card)

Step 5 — Remove the hard disk



- [Are you grounded?](#) If yes, using a spudger, flip up the small black locking flap of the hard disk's ZIF connector.
- Afterwards, using a pair of tweezers, grab the HDD's SATA cable at the transparent tab and simply lift its end up, out of the connector.
- By levering with an opening tool, pry the HDD out of its bay. Once it is on your hand, release its cable from its retaining hole obtained on the base enclosure and finally leave the HDD aside.

To reassemble your device, follow these instructions in reverse order.