



Service door disassembly

Written By: Roberto Bartolacci

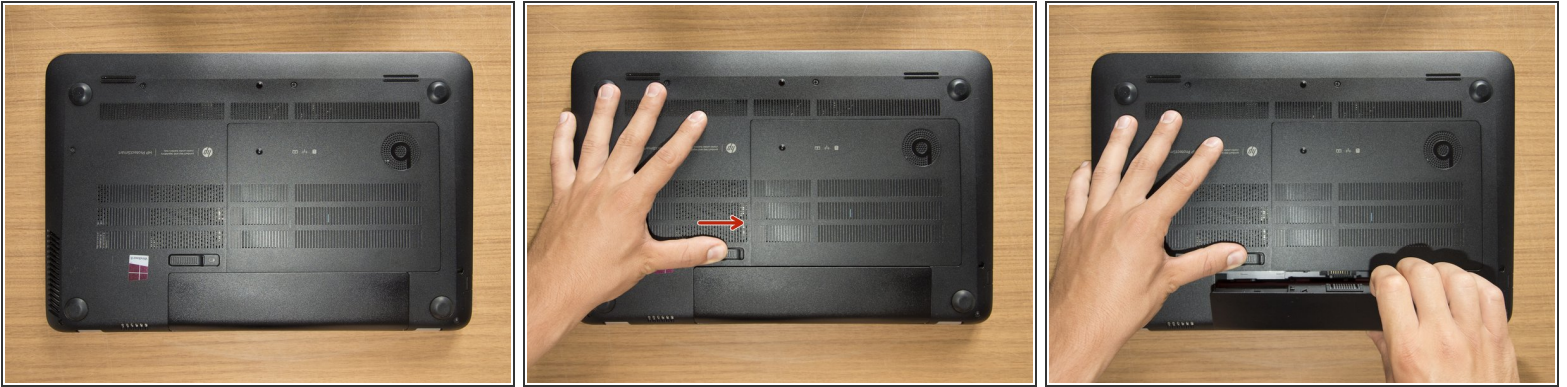




TOOLS:

- [Phillips #00 Screwdriver](#) (1)
- [iFixit Opening Tools](#) (1)
- [iFixit Opening Picks set of 6](#) (1)

Step 1 — Remove the battery



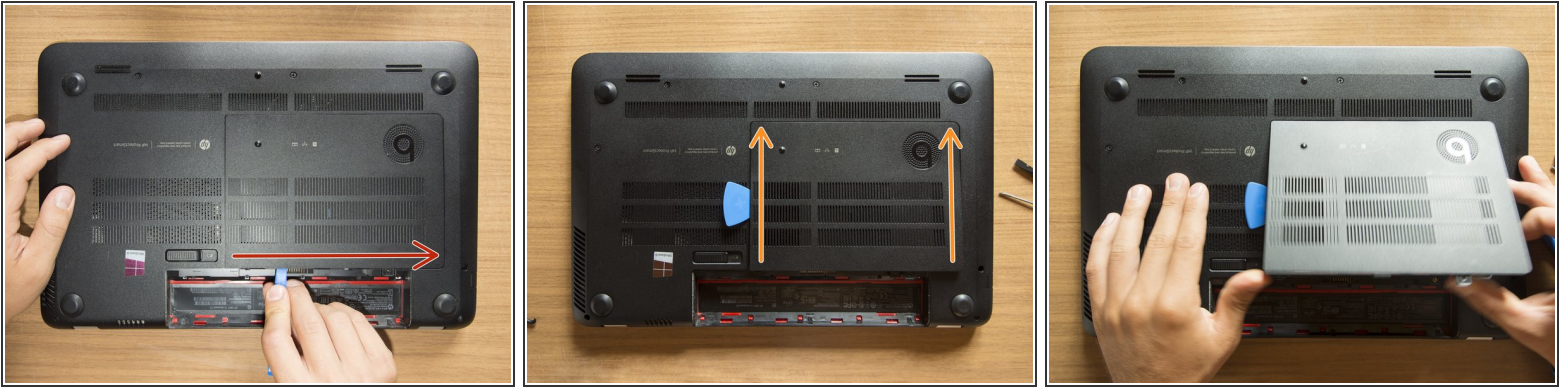
- Turn the laptop upside down and gently lay it down on a flat surface.
 - Slide the battery release latch to the right and the battery will pop up slightly.
 - While keeping the latch slid with one hand, grab the battery with the other hand and remove it by pivoting it upward.
- i** At this point some users would turn the laptop upside down once again and press the power button a couple of times. They say that this should help dissipating all of the remaining electricity around the device. Up to you :)

Step 2 — Remove the captive screw of the service door



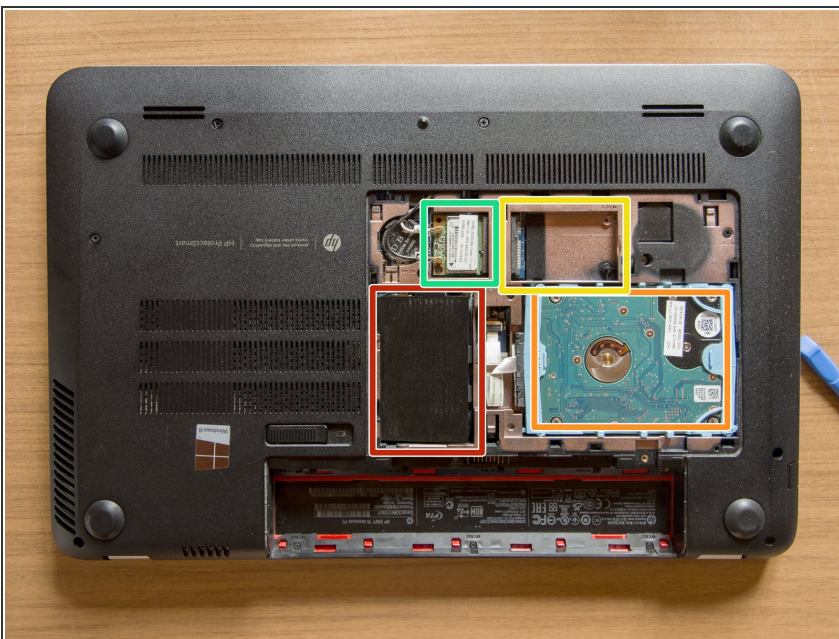
- Remove the Phillips PM2.0×4.0 screw using a PH#00 screwdriver.

Step 3 — Remove the service door



- With an opening tool pry off the tabs that secure the service door to the base enclosure. Start with the long edge.
- Continue along the short edges.
- Once you have pried the service door off as it is in pic#3, it will come out of the rear edge very easily.

Step 4 — Identify the components



- RAM memory modules
- HDD (Hard Disk Drive)
- mSATA SSD slot
- Wifi & BT module (Wireless card)

To reassemble your device, follow these instructions in reverse order.

This document was generated on 2020-12-10 08:27:11 PM (MST).

