



SYNOLOGY DS718+ Teardown

Complete disassembly of the Synology DS718 + NAS.

Written By: Sébastien



INTRODUCTION

Here's a step-by-step tutorial to dismount each piece of the NAS until you reach the motherboard.

'Note: the interest of this tutorial is however limited.'

Indeed, most of the components that a user can be brought to add or change are now accessible directly, without disassembly (storage disks, memory expansion).

*This is a step forward, the previous revision must be completely removed to change a single RAM array.

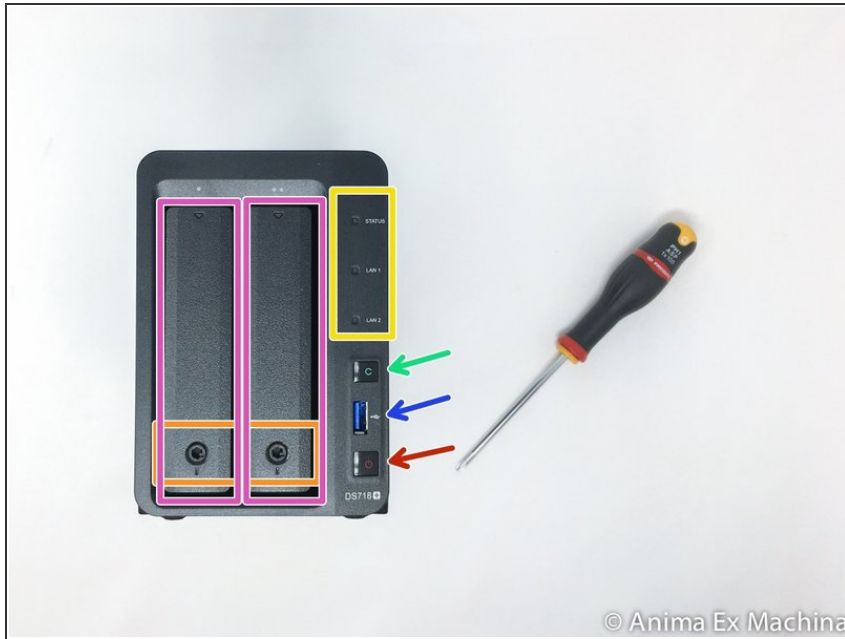
Only the memory stack on the motherboard and fans remain inaccessible directly and require the disassembly of the NAS described in this tutorial to be changed (whether they are HS or replace them by better components).

The dismantling time is estimated at one hour (but with photographs). That said, it is certainly achievable in 20/30 minutes.

The photographs were taken with an iPhone SE, using a portable LED studio.

- : info. must be checked.

Step 1 — Case presentation: front panel



i This NAS DS718 + is equipped with 4 GB of RAM (6 GB max.), an INTEL Celeron J3455 64-bit Quad processor, two bays for SATA drives (HDD, or SSD).

- FRONT PANEL : you can notice on the right side, disks LEDs disappeared. You can find them now just on the top of the disk bays.

- status LEDs
- power buton (startup / shutdown)
- 1 x USB 3 port
- "copy" buton
- 2 x disk support (caddy / cage)
- disk bay lock

Step 2 — Cas presentation: rear panel



- REAR PANEL
 - 1 x 92mm fan
 - 2 x ETHERNET RJ45 Gigabit port
 - 2 x USB 3 port
 - 1 x eSATA port
 - 1 x power connector
 - 1 x Kensington security incision (K-lock)
 - RESET button

Step 3 — Backplane and memory access



✦ Before teardown, unlock the disk media with the key.

- It's a new appreciable feature, the memory slots are now directly reachable.
 - first memory slot
 - second memory slot (not populated)

ⓘ The previous revision (DS716+ II) allowed this operation but a piece of metal prevented to remove memory.


Step 4 — Teardown: Rear Panel - Step 1 / 3



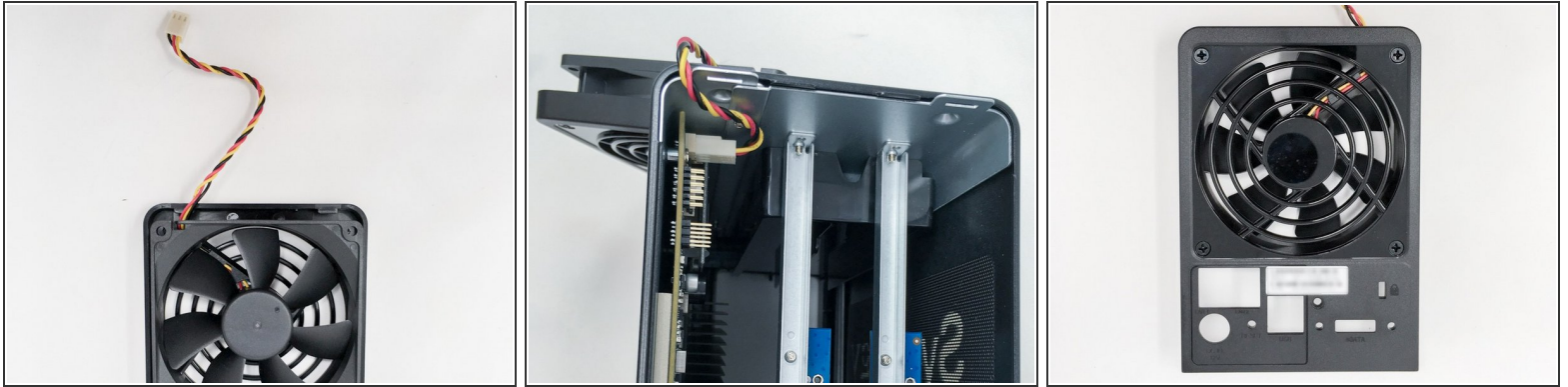
- 1 - Remove the two screws placed under the NAS, on rear side.
- 2 - Remove the screw placed in the middle of the rear panel.

Step 5 — Teardown: rear panel - step 2 / 3



- To remove the rear panel ...
 - slightly pull the lower part of the rear panel so that the lugs do not touch the case, then ...
 - drag the facade upwards ...
-  The back cover is held by two notches into the case.

Step 6 — Teardown: rear panel - step 3 / 3



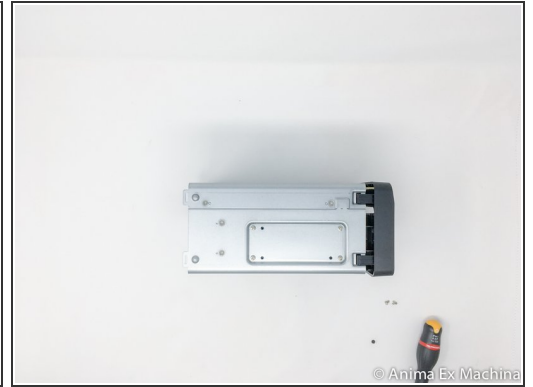
- Once removed, remove the fan connector from the motherboard.

Step 7 — Removing the Metal Housing



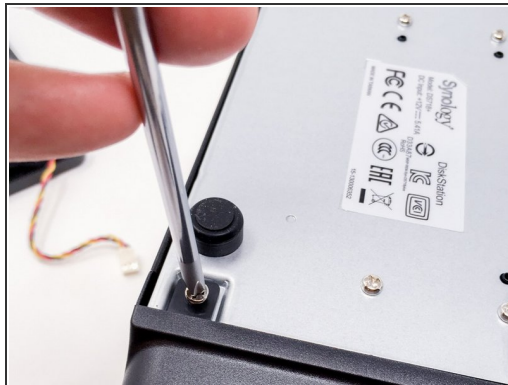
- Once the rear panel is removed, the housing can be removed. To do so drag the cover about 1 cm to the back of the NAS then lift the hood upwards.

Step 8 — Naked case before disassembling metal housing



- Now remains the front to remove ...
- Here are some photographs of the case and the internal structure + screws.

Step 9 — Teradown: front panel - step 1 / 2



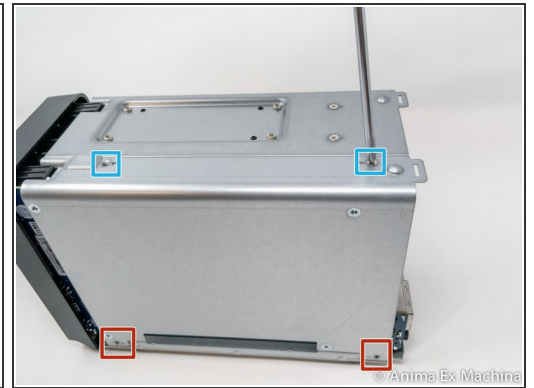
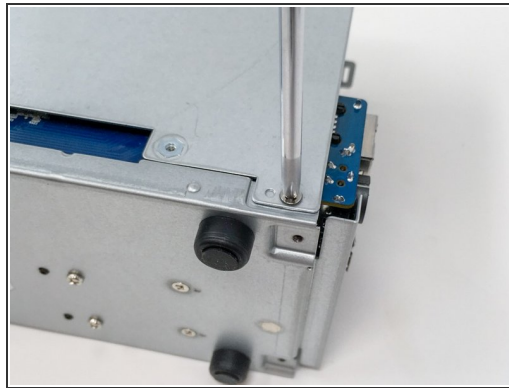
- Remove the two screws under the box on the front side and then ...
- in the same way as for the rear panel, lift the hood slightly ...

Step 10 — Teardown: front panel - step 2 / 2



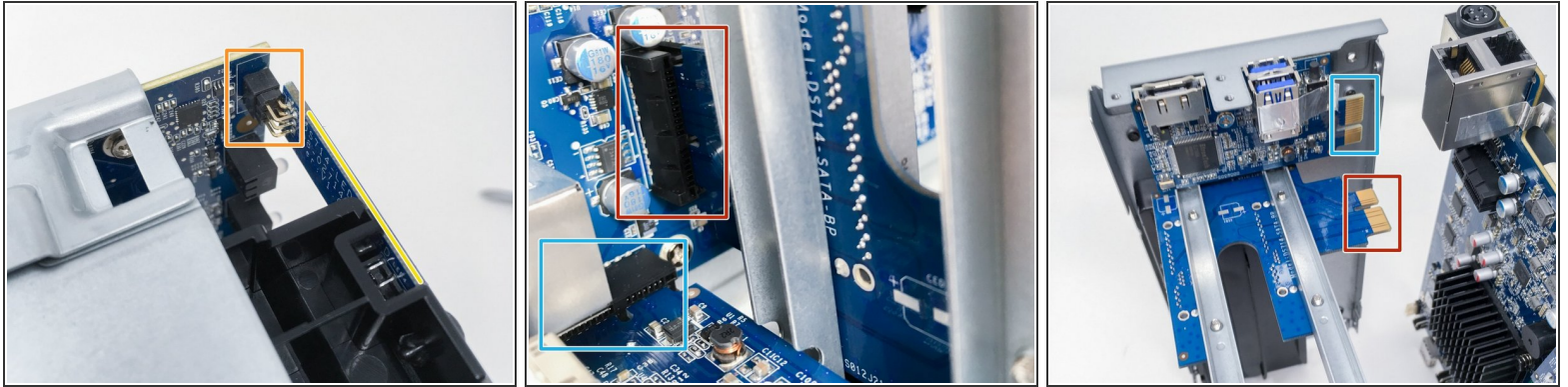
- and remove the front panel ...


Step 11 — Teardown: crankcase and expansion card 1/3



- x 4 screws to remove ...
- x 2 on the right side panel
- and x 2 on the upper part

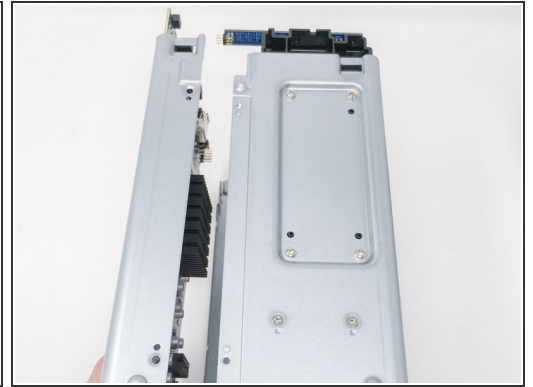
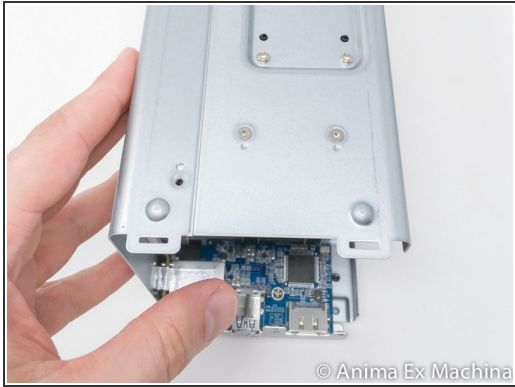
Step 12 — Teardown: crankcase and expansion card 2/3



 This part is delicate to assembly as to disassembly. Read full instructions carefully before handling.

- The guidance remains relatively accurate but the connector for the LED card drives is fragile. Do not force when removing or inserting the side flange.
- electronic card LED disks
- riser for SATA backplane (electronic card or daughter card)
- electronic card riser (USB and e-SATA)

Step 13 — Teardown: crankcase and expansion card 3/3



● INSTRUCTIONS :

- use both hands ...
- pull gradually ...
- everything must come without forcing!


⚠ Pay attention also to the metallic tape ... take it off if possible!

Step 14 — Teardown: motherboard and memory



- motherboard (processor side)

- memory card

 last pictures are bad ...

To reassemble your device, follow the instructions in reverse order.