



# Samsung Galaxy Note8 Battery Replacement

Replace a worn-out battery in the Samsung Galaxy Note8.

Written By: Tobias Isakeit



## INTRODUCTION

Use this guide to replace the worn-out battery in your Samsung Galaxy Note8.

**Before disassembling your Note8, discharge the battery below 25%.** A charged battery can catch fire and/or explode if accidentally punctured.

If your battery is swollen, [take appropriate precautions](#). **Do not heat your phone.** If needed, you can use a dropper or syringe to inject isopropyl alcohol (90+%) around the edges of the back cover to weaken the adhesive. Swollen batteries can be very dangerous, so wear eye protection and exercise due caution, or take it to a professional if you're not sure how to proceed.

Opening the Note8 will **damage the waterproof sealing** on the device. If you do not replace the adhesive, your phone will **function normally**, but will **lose its water-protection**.

This guide involves removing the rear glass cover; you will need replacement adhesive to reattach the back cover when you're done.



### TOOLS:

- [iOpener](#) (1)
- [Suction Handle](#) (1)
- [iFixit Opening Picks set of 6](#) (1)
- [Tweezers](#) (1)
- [Phillips #00 Screwdriver](#) (1)
- [Spudger](#) (1)



### PARTS:

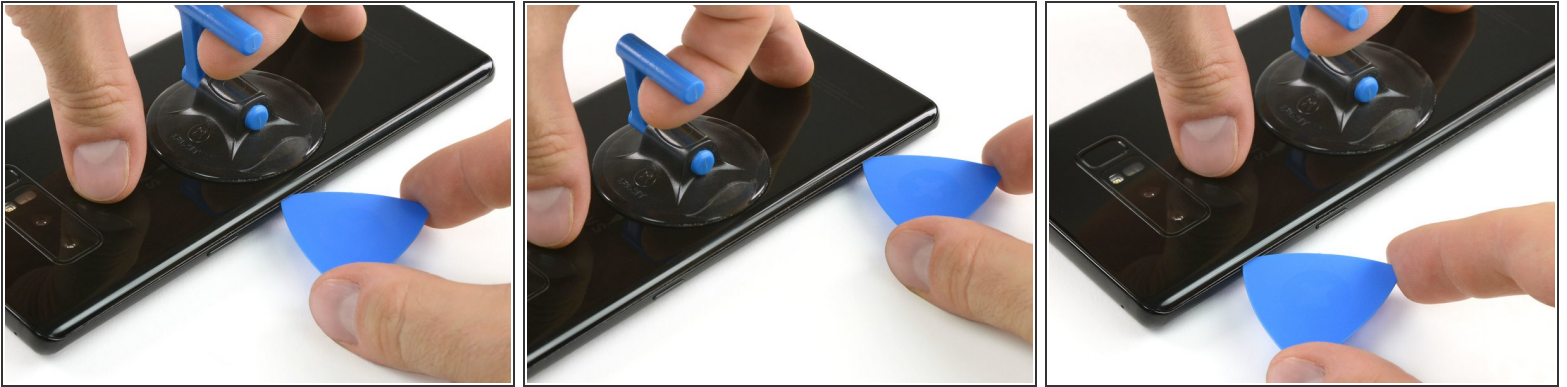
- [Galaxy Note8 Replacement Battery](#) (1)
- [Galaxy Note8 Battery Adhesive](#) (1)
- [Galaxy Note8 Rear Cover Adhesive](#) (1)

## Step 1 — Back Cover



- Switch off your phone.
- [Prepare an iOpener](#) for softening the adhesive on the back of the Note8.
- Apply the iOpener on the back of the Note8 along the side with the power button.

## Step 2



- Use a suction handle to lift the back cover and create an opening pick to get in the gap.
  - ❗ Since the back cover is also slightly curved at the edges you want to insert the opening pick at a lower angle from underneath.
- Start at the middle of the side and cut the adhesive while pulling up with the suction handle.
  - ⚠ Be careful not to lever the opening pick too much to avoid breaking the back cover. Rather pull with the suction handle and use the pick for cutting the adhesive.
- Move the pick towards the bottom corner and leave it there to keep the adhesive from resealing to the case.
- Use another pick and move it to the top corner.
  - ❗ If it's getting harder to move the pick you might need to reheat the iOpener and apply it to the back cover again.

### Step 3



- Again take another opening pick and carefully move it around the corner and along the top edge.
- Reheat with an iOpener if necessary.
- Leave the pick at the top right corner to keep the adhesive from resealing.

### Step 4



- Rotate the device and start to separate the adhesive at the bottom with another opening pick.
- Leave the pick at the bottom right corner to keep the adhesive from resealing.



## Step 5



- When the adhesive has been separated on all three sides properly you will be able to slowly lift the back cover.
  - ⚠ Don't force it open. Use an iOpener to again soften the adhesive if the back cover won't come off or starts to bend.
- Pay attention to the fingerprint sensor connector when flipping the back cover open. You might need to disconnect it as described in the next step.

## Step 6



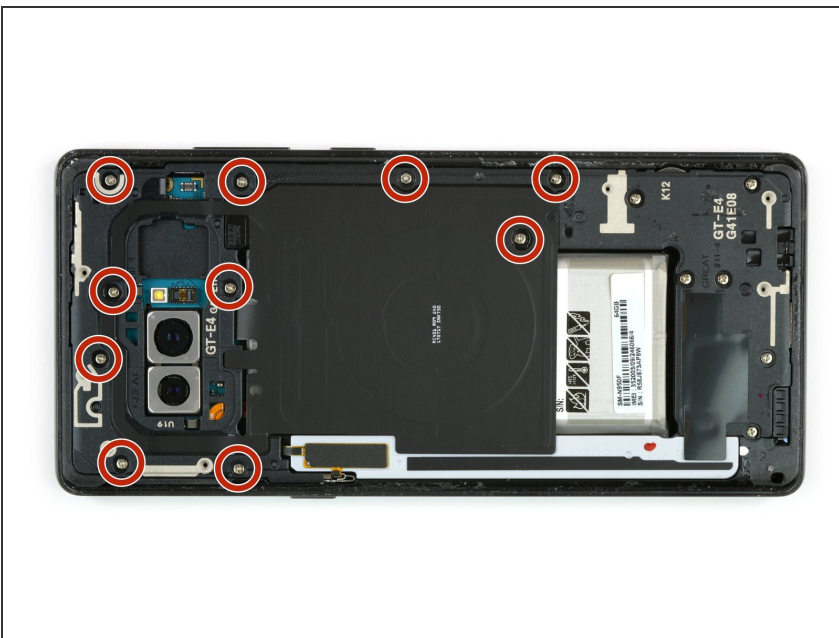
- Use a pair of tweezers to disconnect the fingerprint sensor.
  - ⓘ The connector might already have come off when flipping the back cover open.

## Step 7



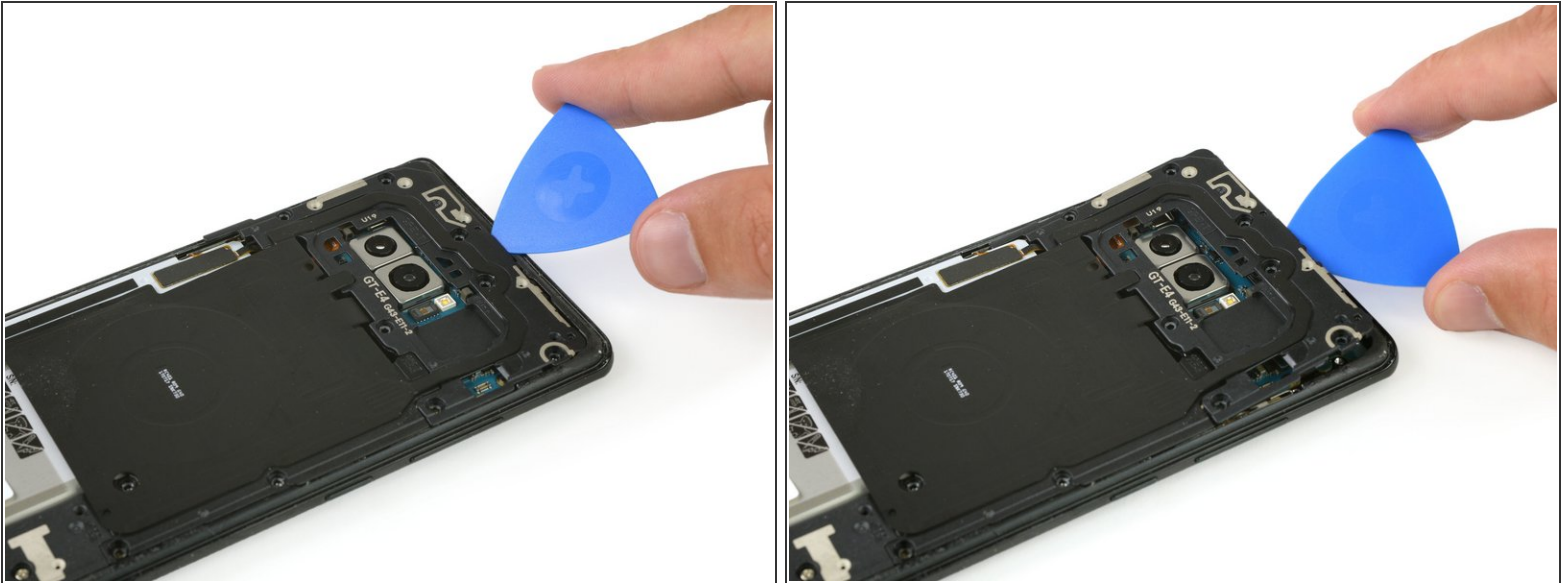
- Remove the back cover.
- ★ To prepare for the reassembly remove any remaining adhesive from the phone, and clean the glued areas with isopropyl alcohol and a lint-free cloth.

## Step 8 — NFC Antenna and Charging Coil Assembly



- Remove the ten Phillips #00 screws.

## Step 9



- Use an opening pick at the top edge to get between the NFC antenna and charging coil assembly and the case.
- Lever the top of the assembly out of the case.

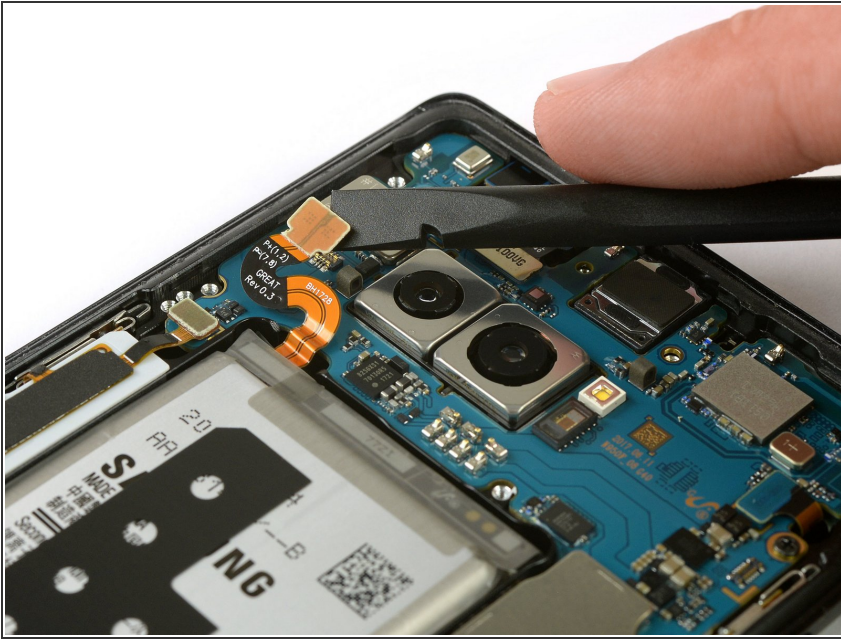
## Step 10



- Carefully pull up the complete charging coil and NFC antenna assembly.
- ⚠ The bottom left part of the assembly is slightly glued down to the frame.



## Step 11 — Battery Disconnect



- Use the flat end of a spudger to disconnect the battery connector.

## Step 12 — Battery

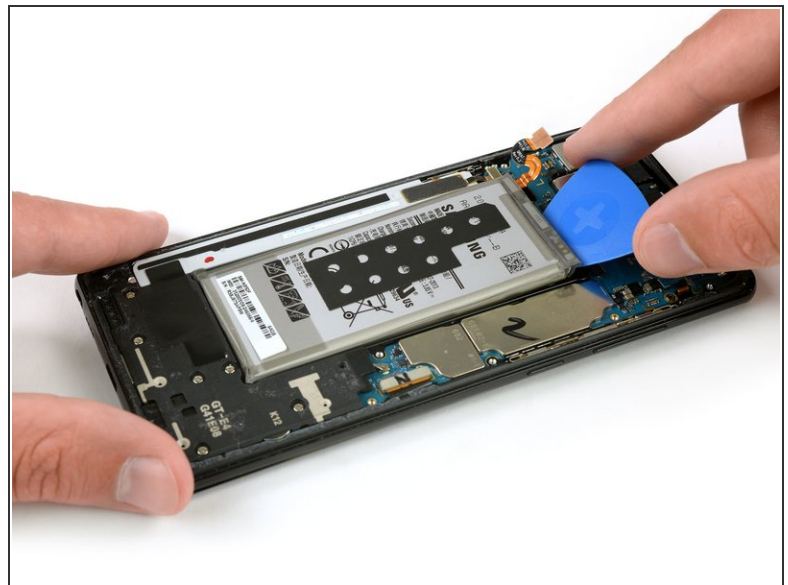
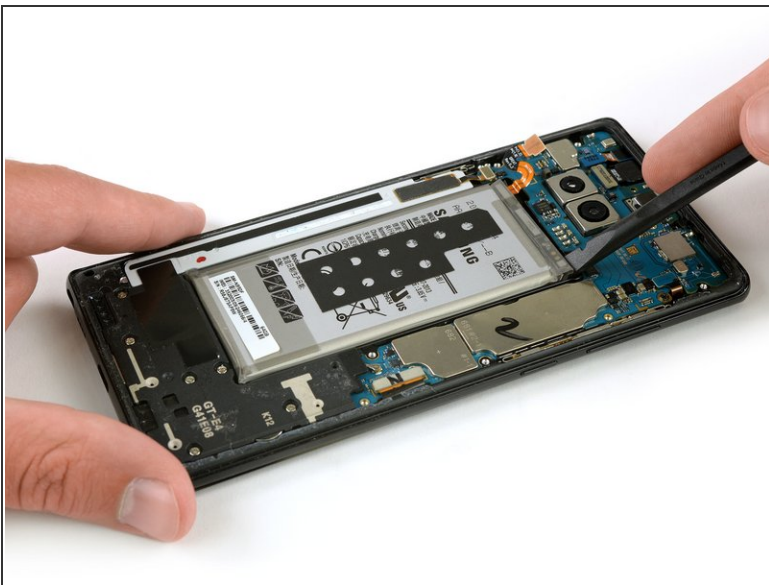


- [Prepare an iOpener](#) and apply it to the display for at least two minutes to loosen the adhesive beneath the

battery. Reheat and reapply the iOpener as needed.

- Alternatively or when the battery is blown up, you can apply some isopropyl alcohol under each corner of the battery and allow it to penetrate for several minutes to help weaken the adhesive.

## Step 13



- Use the flat end of a spudger to pry up the battery from the top right corner.

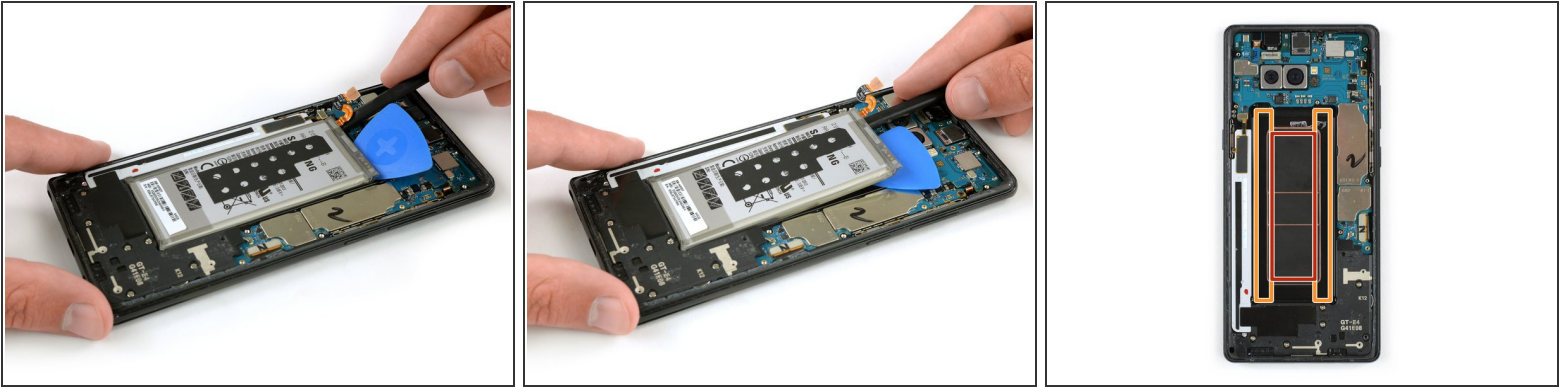
⚠ You will be prying against the case directly above the mainboard. Pry carefully to avoid damaging any close components.

- ⓘ You may need to reheat and reapply the iOpener repeatedly to further soften the adhesive. The adhesive is tough and it may take a few tries to get the spudger started under the battery.

- Use the spudger to pry up the battery until you can insert an opening pick to prevent the adhesive from resealing.

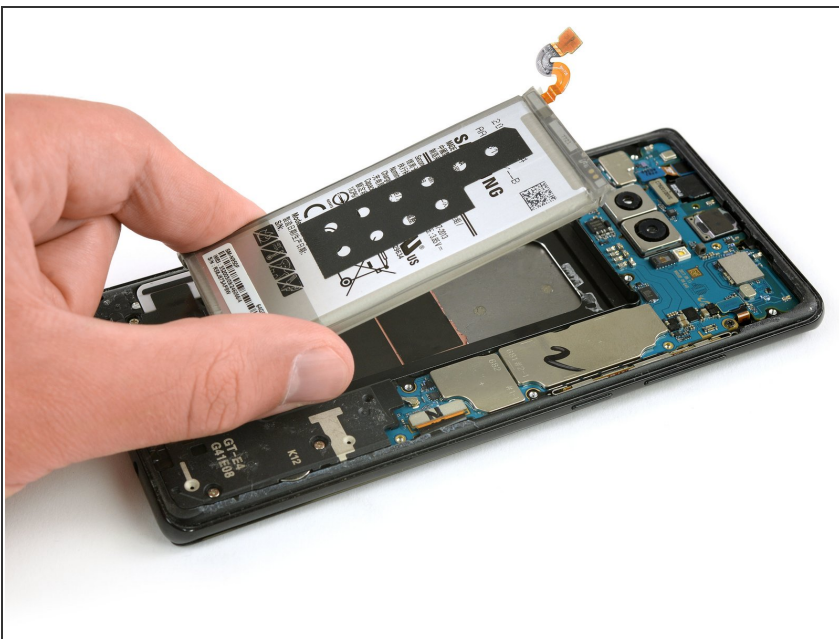
⚠ Try your best not to deform the battery during this process. Soft-shell lithium-ion batteries can leak dangerous chemicals, catch fire, or even explode if damaged. Do not use excessive force or pry at the battery with metal tools.

## Step 14



- Use the flat end of the spudger to pry up the top left corner of the battery where the flex cable is located.
- Slide the spudger along the side of the battery to break apart remaining adhesive.
- ⓘ When prying keep to the areas marked orange. Avoid the red area in the middle which is the back of the display.

## Step 15



- Lift the battery out of the case.
- ⚠ Do not reuse the battery after it has been removed, as doing so is a potential safety hazard. Replace it with a new battery.
- Remove any remaining adhesive from the phone, and clean the glued areas with isopropyl alcohol and a lint-free cloth.
- ★ [Follow this guide](#) to install battery adhesive.
- ★ [Follow this guide](#) to install custom-cut adhesives.

**Secure the new battery** with pre-cut adhesive or double-sided adhesive tape. In order to position it correctly, apply the new adhesive into the phone at the places where the old adhesive was located, not directly onto the battery. Press the new battery firmly into place for 5-10 seconds.

To reassemble your device, follow these instructions in reverse order, replacing the adhesive where needed.

If possible, turn on your phone and **test your repair** before closing and sealing up the phone.

For best results, when your repair is complete, [calibrate your newly-installed battery](#).