

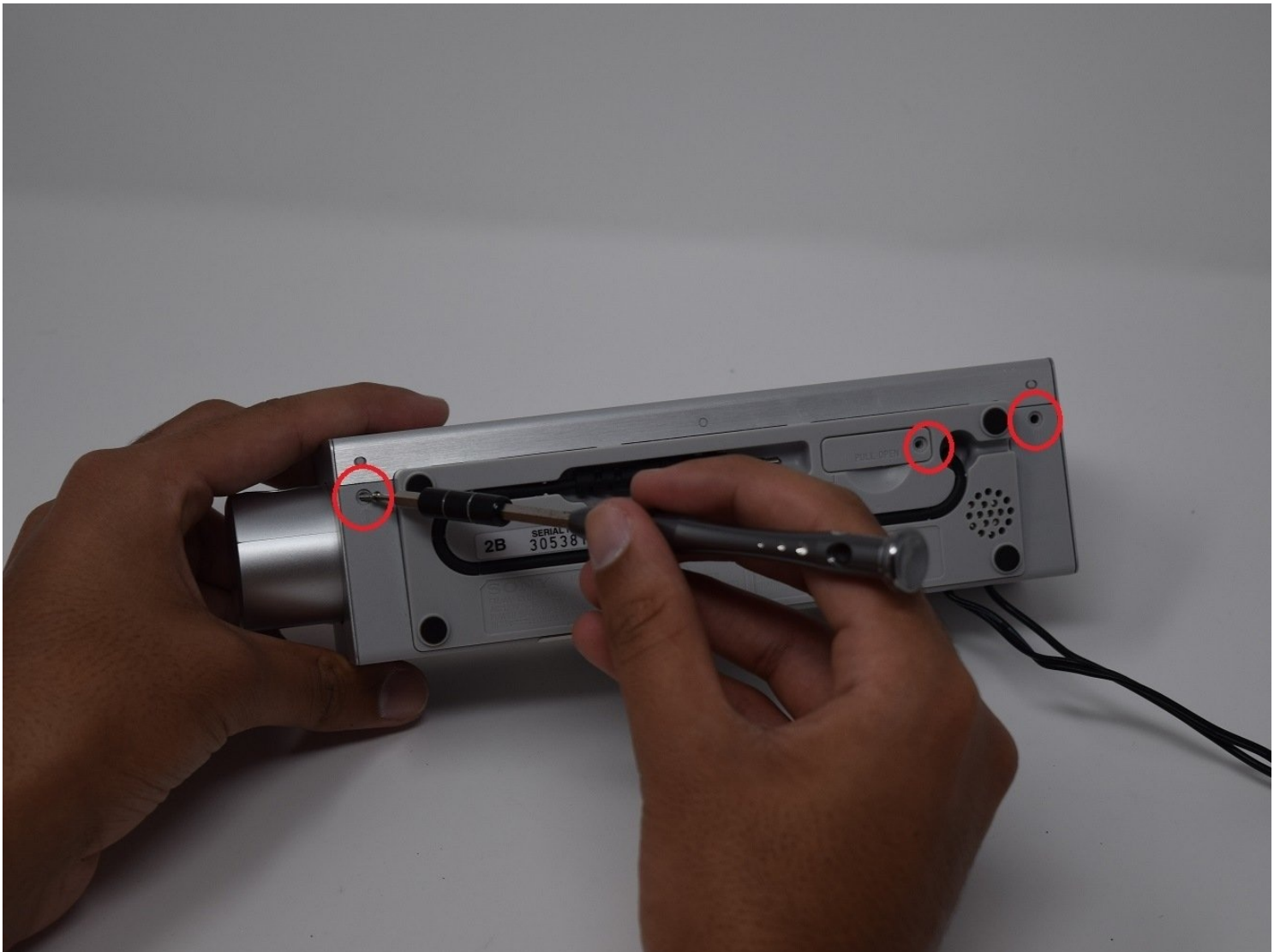


Sony Dream Machine ICF-C717PJ Projector

Adjustment

This guide is intended to help users resolve...

Written By: Gurleen Powar



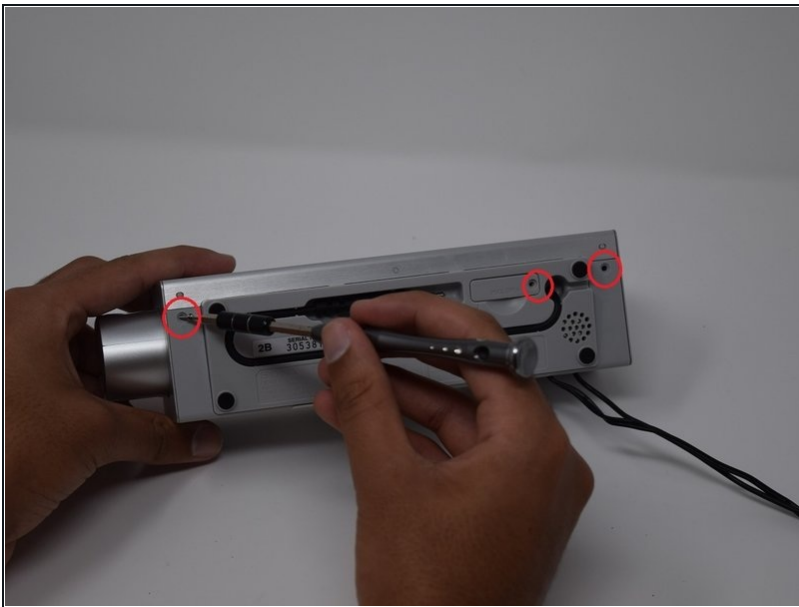
INTRODUCTION

This guide is intended to help users resolve issues with the projector. Please see the Sony Dream Machine ICF-C717PJ Troubleshooting page: [Sony Dream Machine ICF-C717PJ](#) to eliminate other possible issues before you begin. This guide will help assist you in repair the issues impacting the clarity of the projection display.

TOOLS:

[Phillips #0 Screwdriver](#) (1)

Step 1 — Sony Dream Machine ICF-C717PJ Projector Adjustment



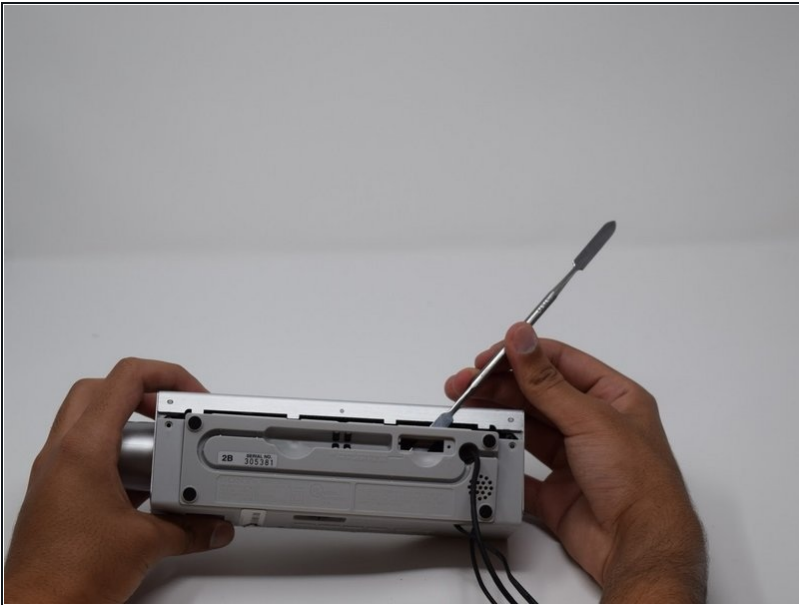
- Remove the screw from the backside cover of the recorder with a Phillips Screwdriver.

Step 2



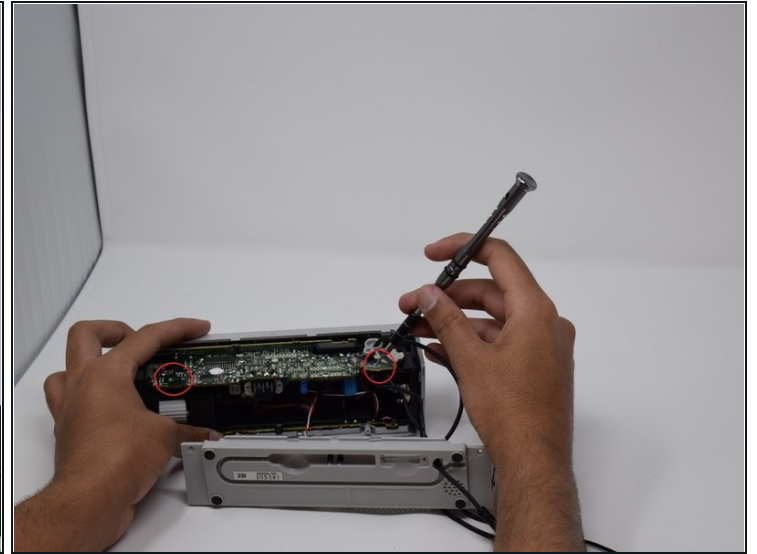
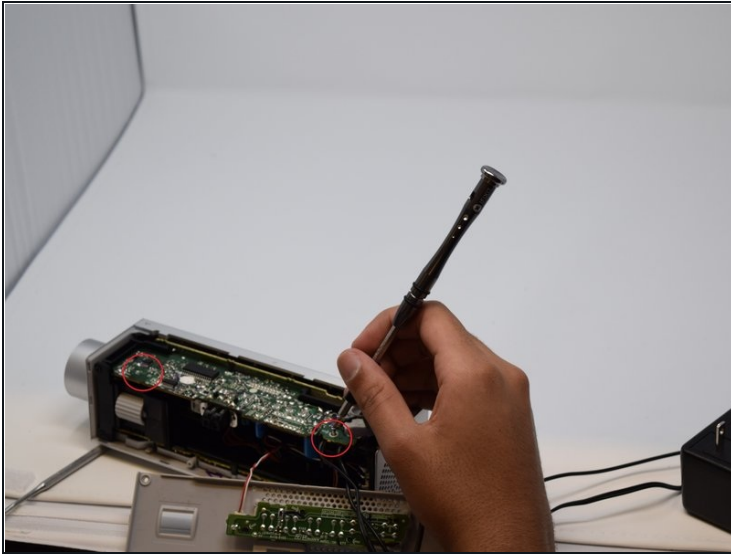
- Remove the battery cover tab.

Step 3



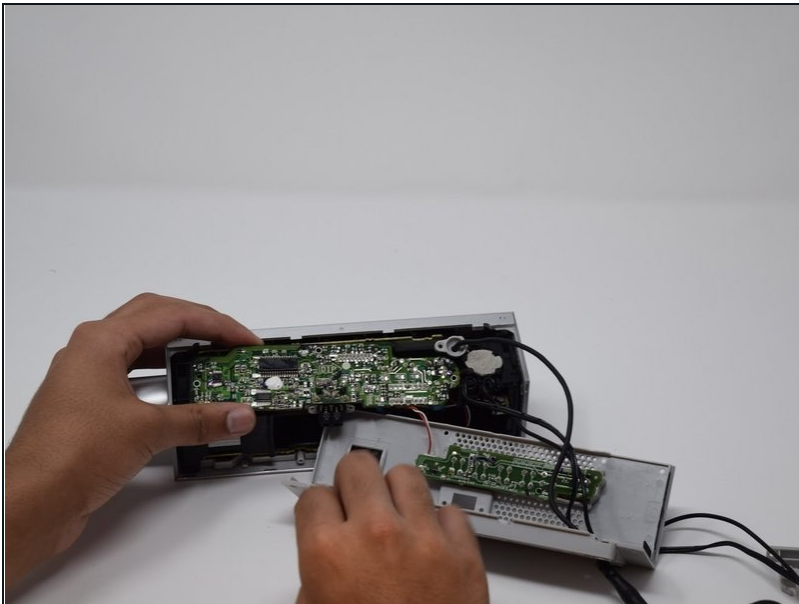
- Remove the backside cover of the device. You can pry open with a screwdriver if necessary.

Step 4



- Remove screws from motherboard as shown in the photo.

Step 5



- Pull motherboard out with your hands.

Step 6



- Remove the paper tab from its slot and re-insert it.