



Sony Dream Machine ICF-C717PJ Battery Replacement

If the device has a dim display, isn't staying...

Written By: Ainsley McCullough



INTRODUCTION

If the device has a dim display, isn't staying on or simply fails to power on; it may be time to replace the battery. Please see the Sony Dream Machine ICF-C717PJ Troubleshooting page: [Sony Dream Machine ICF-C717PJ](#) to eliminate other possible issues before replacing the battery. This guide will help to assist you in replacing the battery on Sony Dream Machine ICF-C717PJ.



TOOLS:

- [Phillips #0 Screwdriver](#) (1)



PARTS:

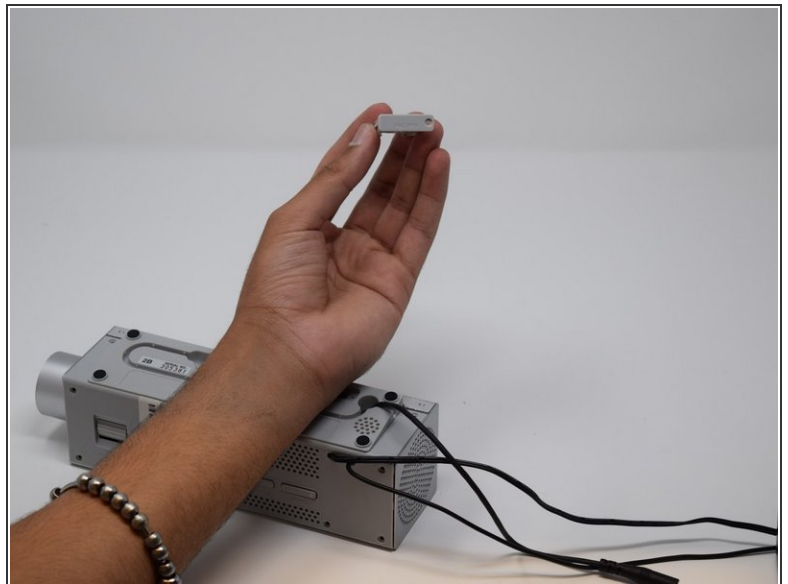
- [Sony CR2032 Lithium Battery](#) (1)

Step 1 — Battery



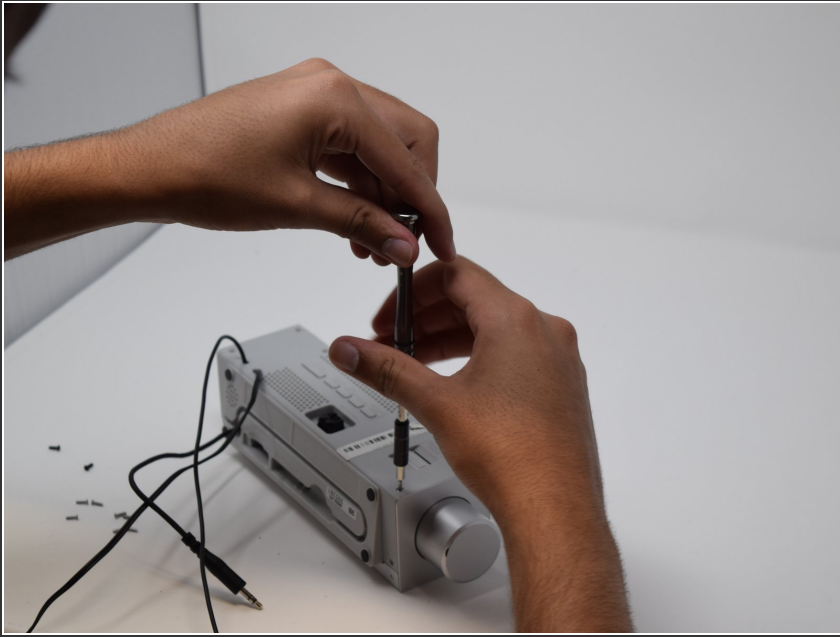
- To start, use a small Phillips screwdriver, to remove the screw located on the battery component on the back of the device.

Step 2



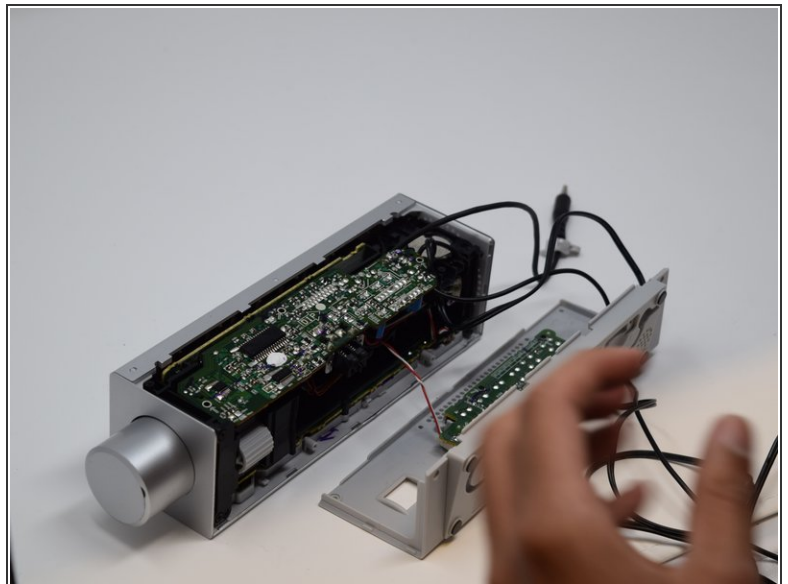
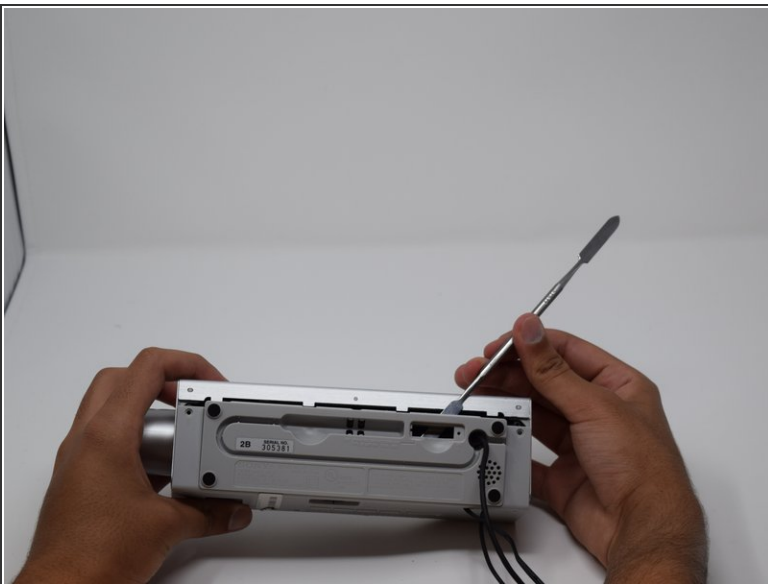
- Once you have removed the screw from the battery cover, pull out the cover using your fingers.

Step 3



- Remove the remaining screws from the back of the clock.
- Set them aside for reassembly

Step 4



- Remove the back panel of the clock, pry open with screwdriver if necessary.
- Ensure that the red wires connecting the back panel and the main device are not frayed or damage before proceeding to the next step.

To reassemble your device, follow these instructions in reverse order.