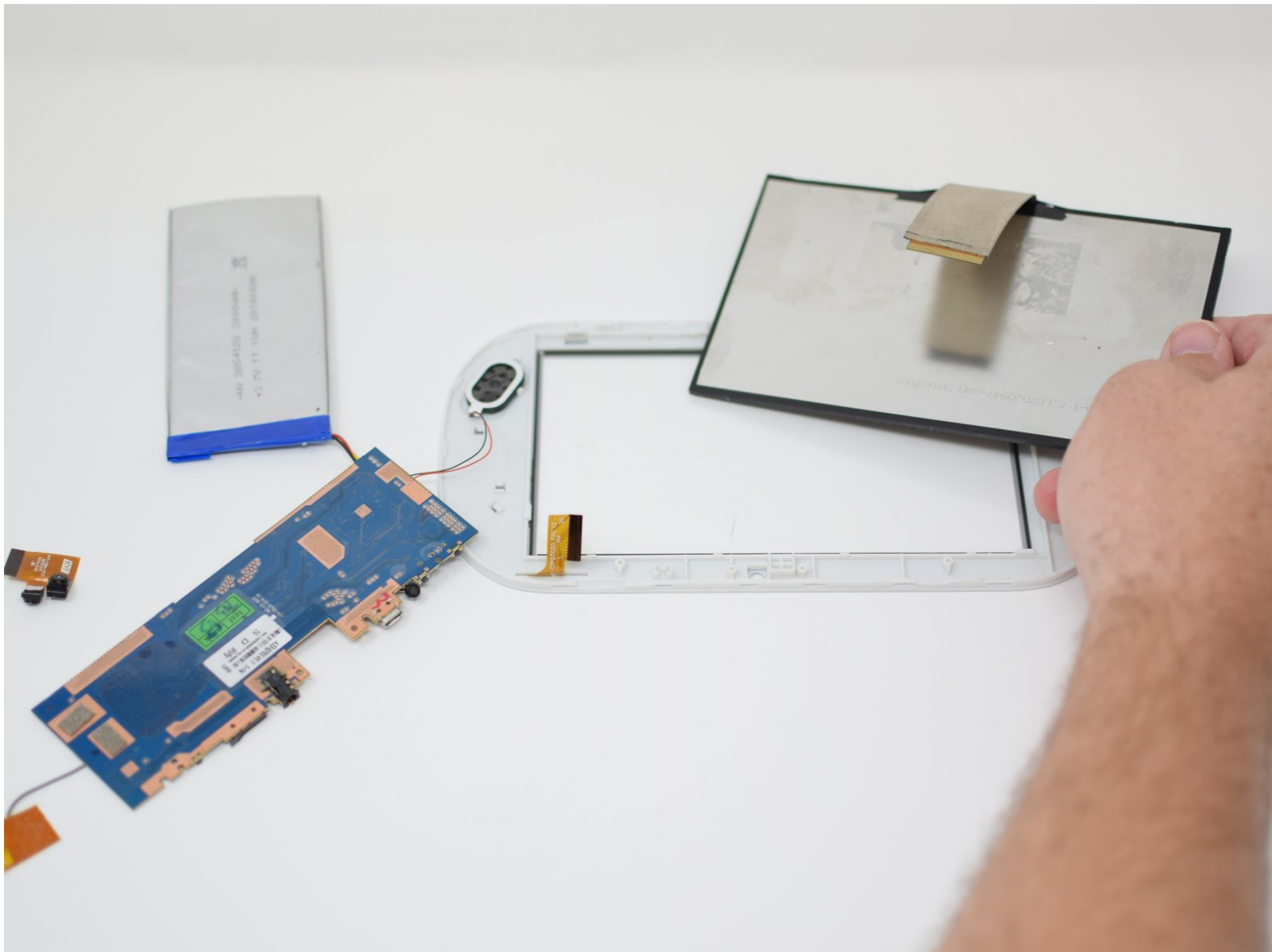




Ematic FunTab 3 Touch Screen Replacement

Replace your cracked, or defective screen to make your FunTab 3 work again.

Written By: Amanda Davis



INTRODUCTION

If your device remains blank or seems to not power on when pressing the power button, a screen replacement may be necessary. If the device's display is damaged, this guide will show you the steps to replacing your defective screen. After following the necessary steps to remove the battery and motherboard, replacing the screen is very quick.



TOOLS:

- [Soldering Iron](#) (1)
 - [Tweezers](#) (1)
 - [iFixit Opening Tools](#) (1)
-

Step 1 — Back Panel



- ⚠ Turn off the device before starting
- ⚠ To prevent damage, open the device on the side without the buttons.

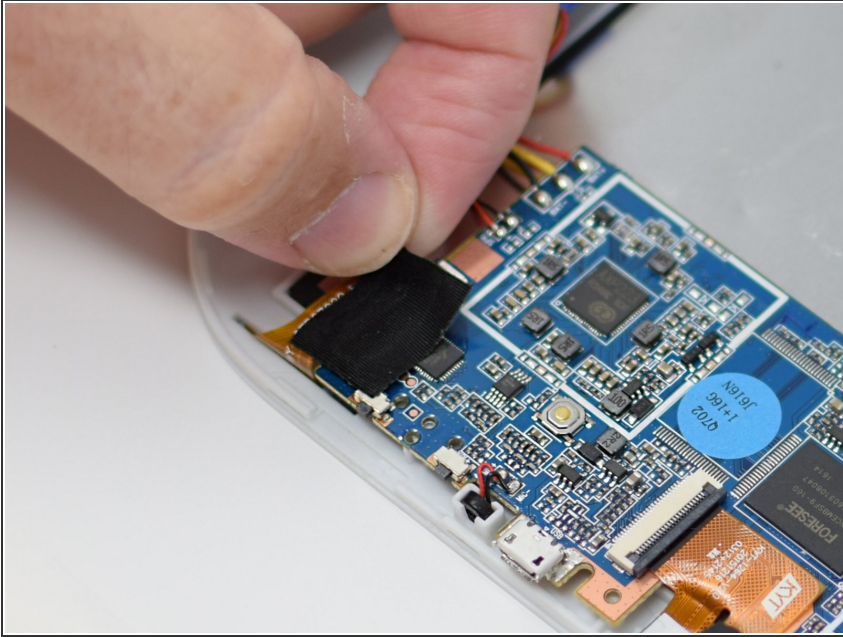
- Insert the hooked end of the plastic opening tool in the gap between the screen and the back panel on the edge of the device.
- Slide the plastic opening tool down the long side of the device.
- Insert tool again and slide it down the long side of the case a second time.

Step 2



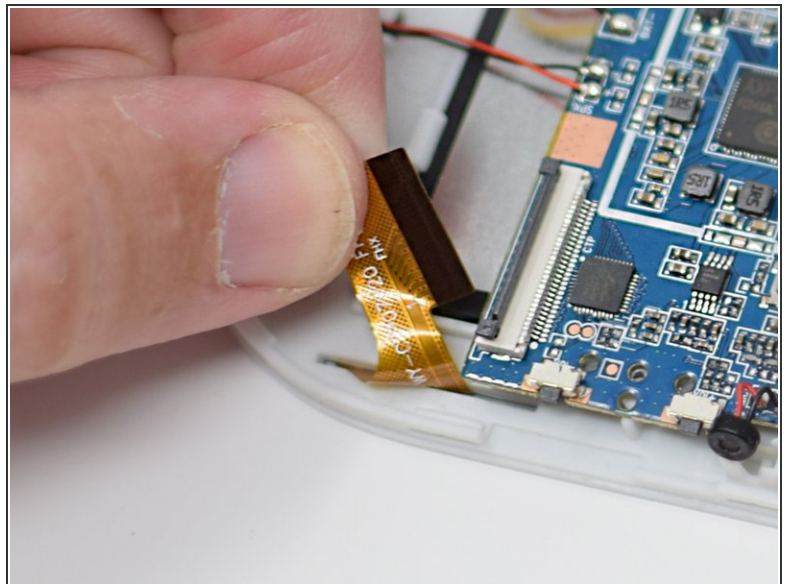
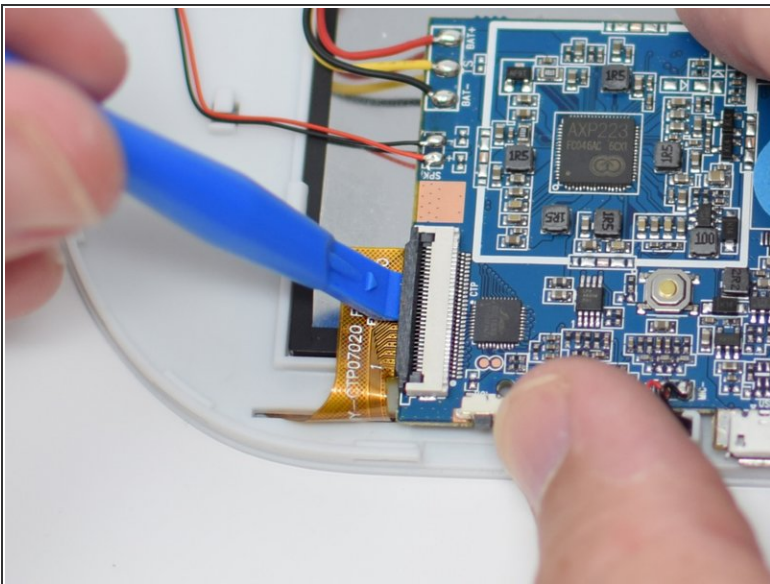
- Pull the back panel away from the screen.

Step 3 — Motherboard



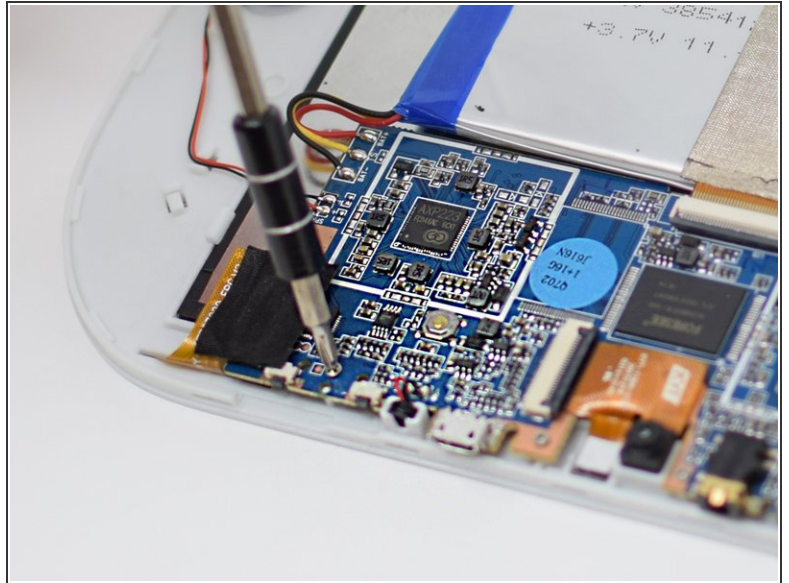
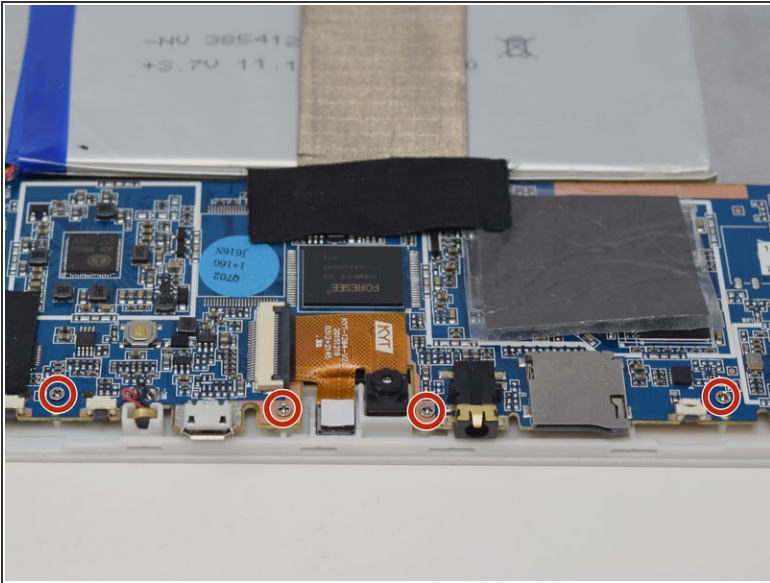
- Remove the black tape to reveal the screen connector.

Step 4



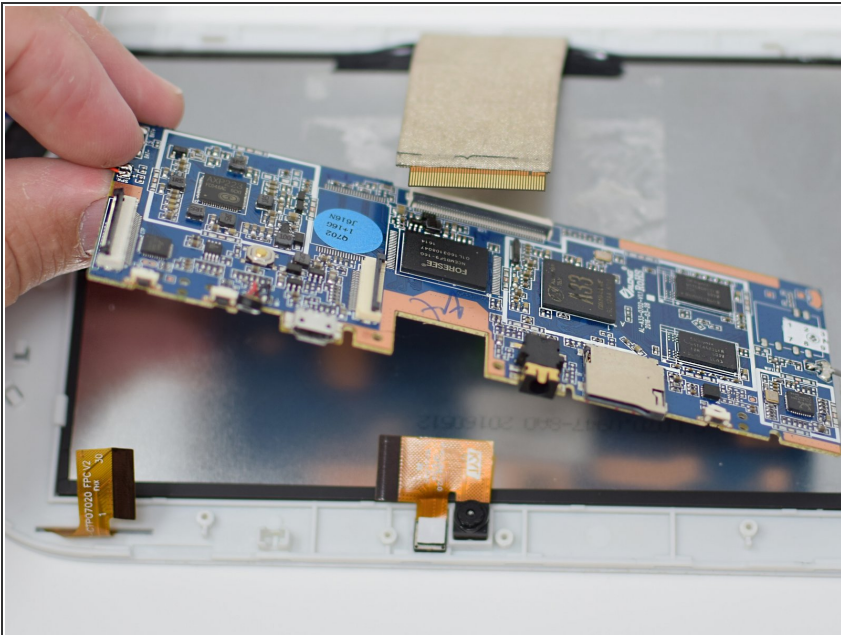
- Flip up the retaining tab using the plastic opening tool.
- Pull out the screen wire ribbon to disconnect the screen and motherboard.

Step 5



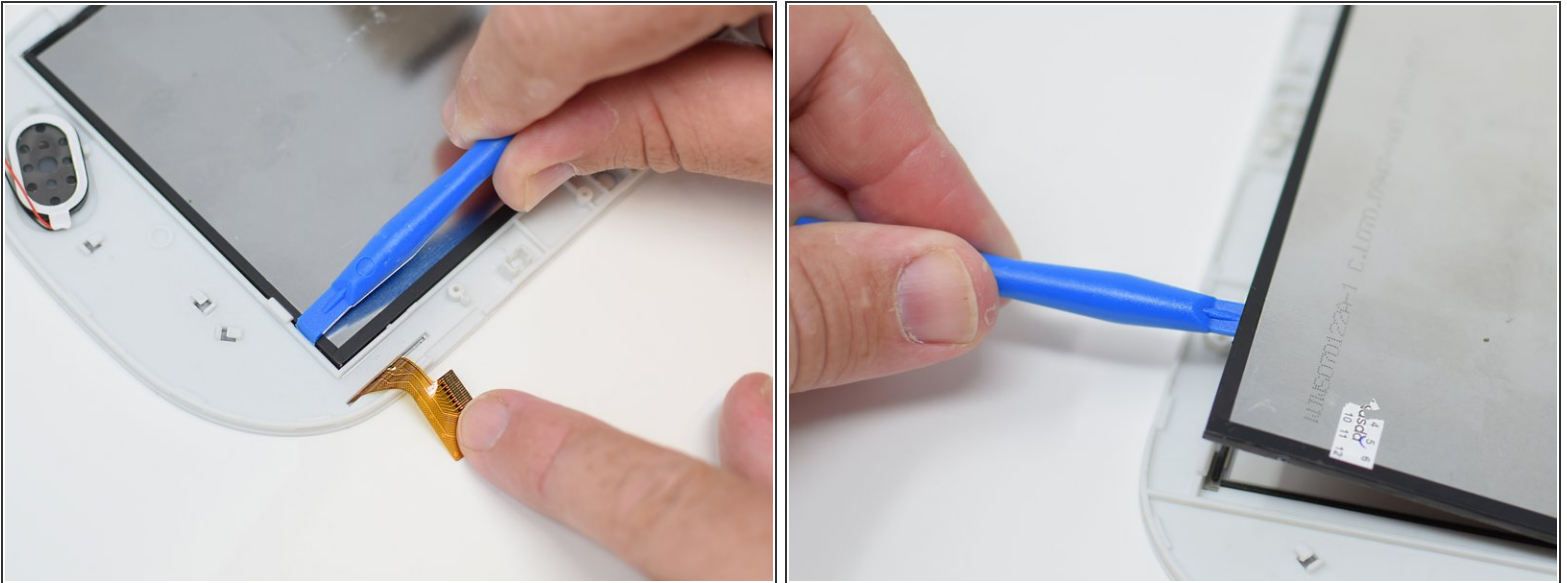
- Using a PH 00 screwdriver, remove the four 4.5 mm screws that are holding the motherboard in place.

Step 6



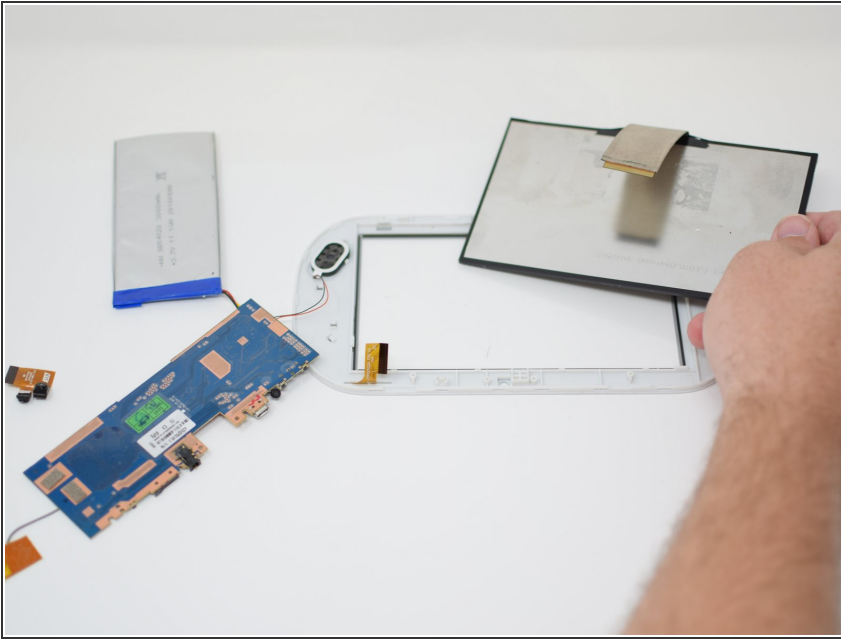
- It is now safe to remove and replace the old motherboard with your new motherboard.
- ☑ Close the black ribbon retaining tabs once ribbons are inserted during reassembly.

Step 7 — Touch Screen



- Insert the hook side of the opening tool between the case and display.
- Press down on the tool until the screen is clear of the white retaining tabs.
- Use the plastic opening tool to gently pry up the screen.
- ⓘ This is best done on the corner closest to the wire ribbon.
- Continue prying around the screen until the screen pops out.

Step 8



- After the screen has come loose, remove it from the device.
- ★ When reassembling, make sure the screen locks in place, this may require extra pressure
- ★ Close the black ribbon retaining tabs once ribbons are inserted during reassembly.

To reassemble your device, follow these instructions in reverse order.