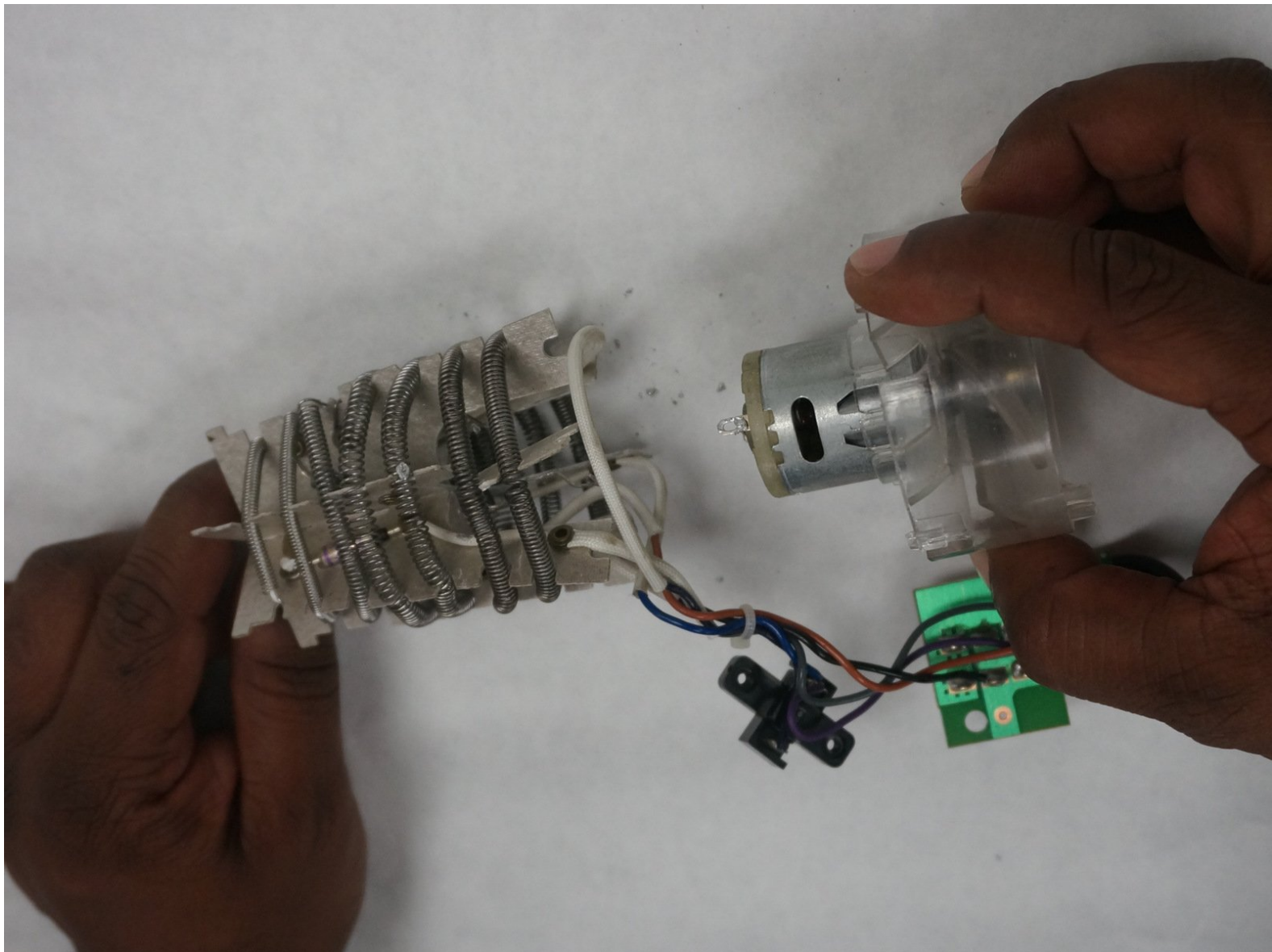




# Revlon RVDR5061 Heating Element Assembly Replacement

This guide describes how to remove/replace the heating element assembly of the Revlon RVDR5061 hair dryer.

Written By: Soneil Pitamber



---

## INTRODUCTION

Sometimes there could be a weak section of a hair dryer's heating element and it could break at that point, at which time the heating element assembly, make sure to direct the force of the point of the soldering iron in a way as it will not slip and stab your support hand. If you do not know how to solder, here is a useful link: [How To Solder and Desolder Connections](#)



### TOOLS:

- [iFixit Opening Tools](#) (1)
  - [Soldering Iron](#) (1)
  - [Phillips #3 Screwdriver](#) (1)
-

## Step 1 — Fan/Motor Assembly



- Using a Phillips #3 screwdriver, remove the single 25 mm Phillips head screw in the handle by turning it counterclockwise.

## Step 2



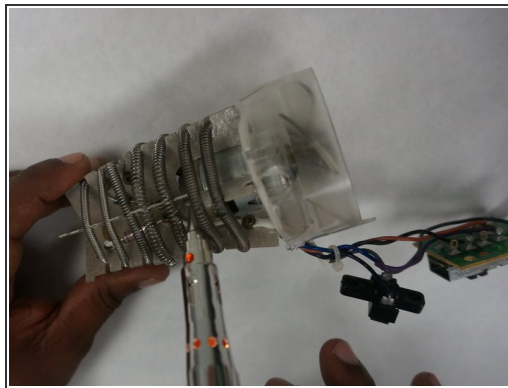
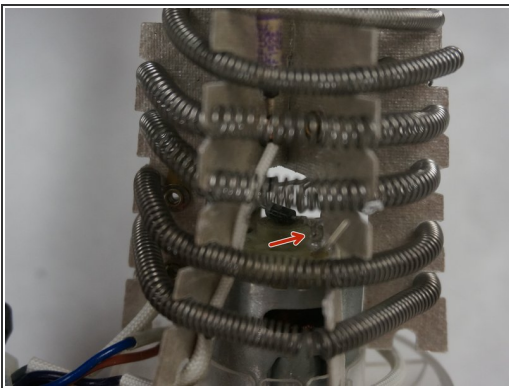
- Using a medium flathead screwdriver or better yet iFixit plastic opening tools, gently pry apart the handle from the power cord.

### Step 3



- After pulling apart the housing, all internals will be free to remove.

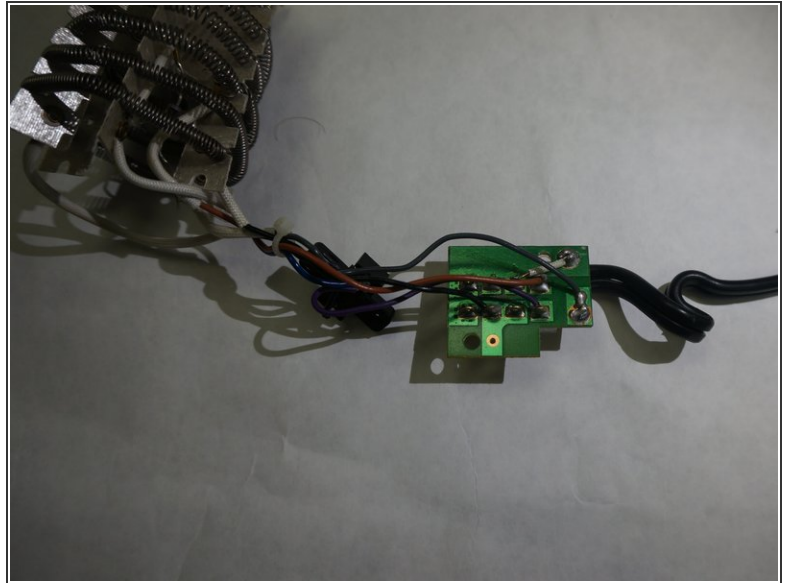
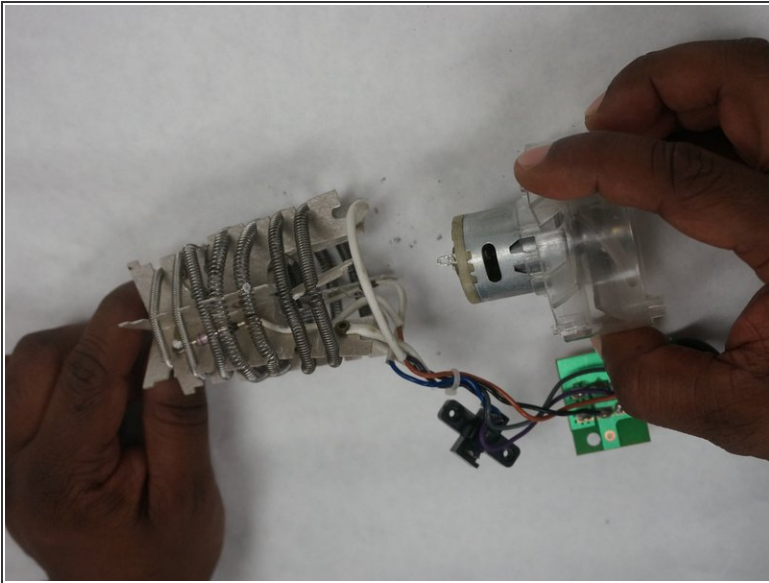
### Step 4



- The fan/motor assembly is connected to the heating element assembly at two points need to be desoldered. After pulling the attached wires through the holes the fan/motor assembly will be free from the heating element assembly. Congratulations you have now completely removed the fan/motor assembly from this hair dryer!

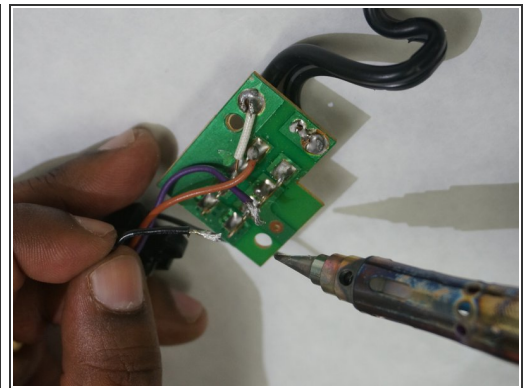
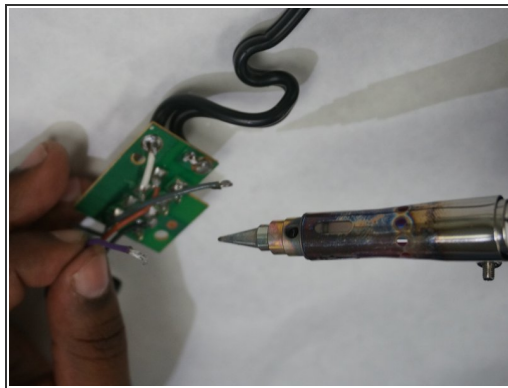
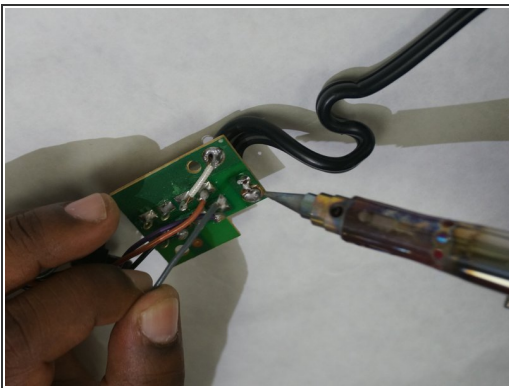


## Step 5 — Heating Element Assembly



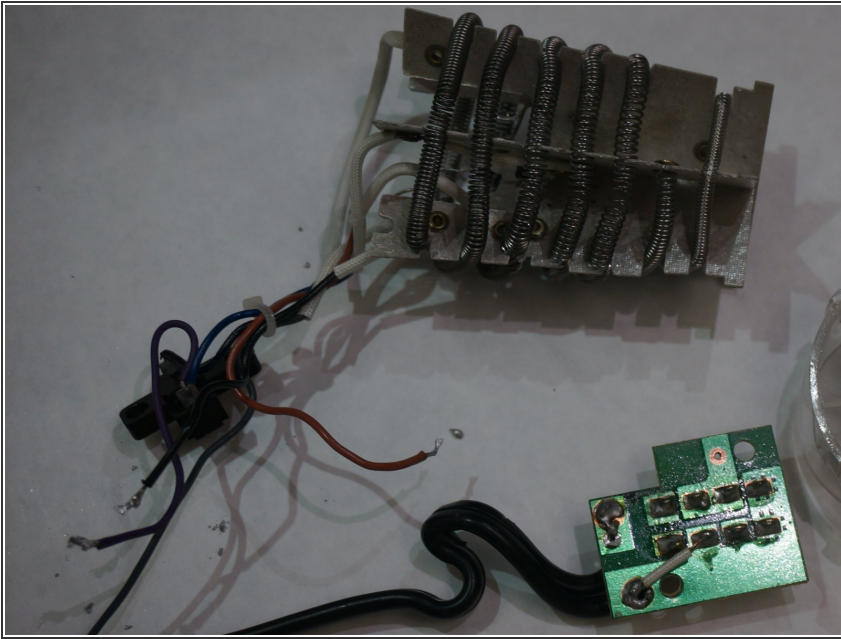
- Once the fan/motor assembly is disconnected from the heating element assembly you will see that the heating element assembly is connected to a circuit board by four wires. The color of these wires are grey, black, purple and brown.

## Step 6



- Desolder these four wires one by one from the circuit board.

## Step 7



- The heating element assembly will now be separated from the circuit board and can be replaced with a new one.

To reassemble your device, follow these instructions in reverse order.