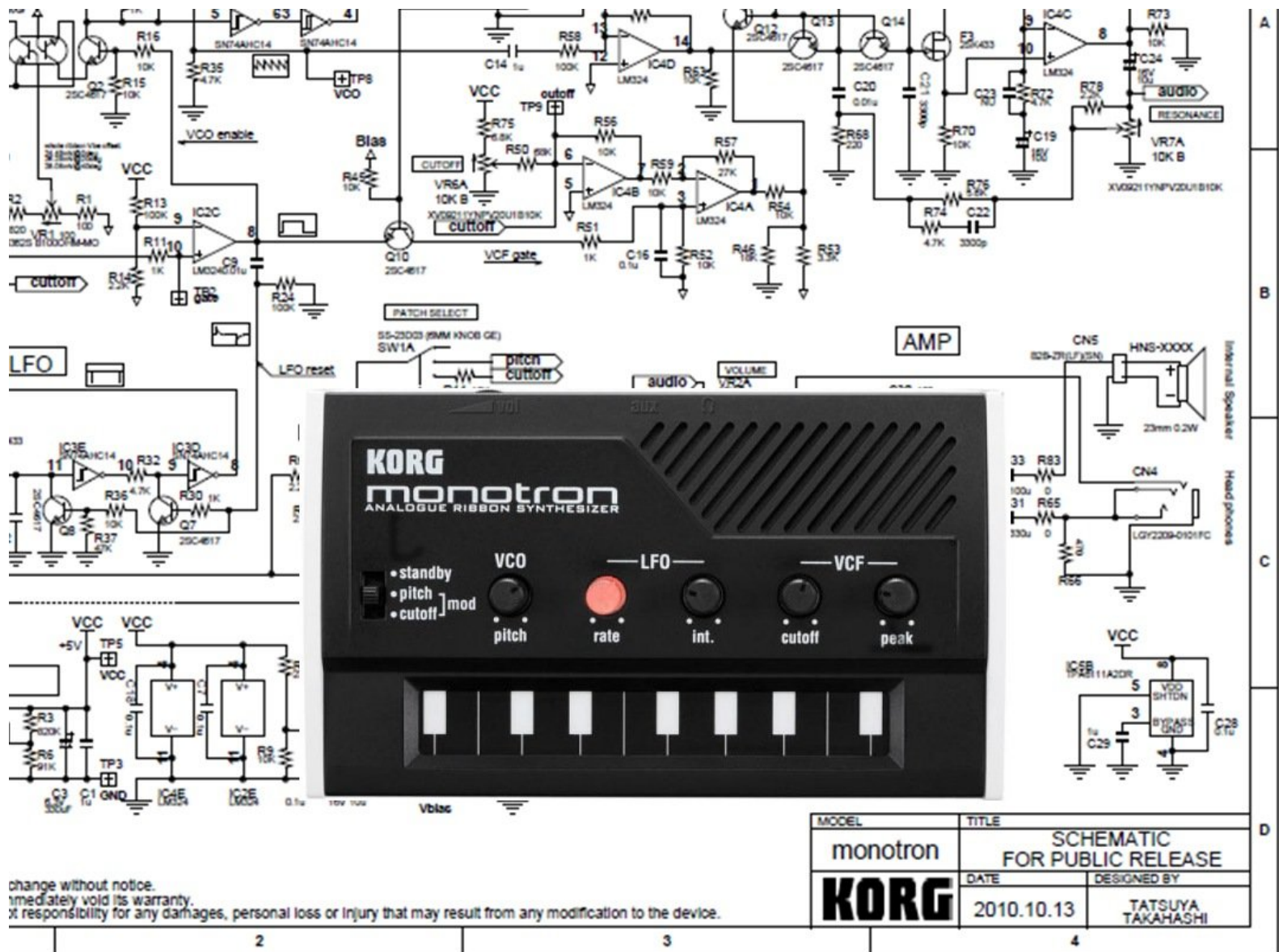




KORG Monotron Teardown

This teardown will help you to better hack this great mini synt.

Written By: Carlo Romagnoli



INTRODUCTION

This teardown will help you to better *hack* and *repair* the **KORG Monotron** mini synt.

This battery powered synt is made of a real analog *VCO* a *VCF* and a *LFO*. The *VCF* is similar to the ancient **KORG's** classic *MS-10* and *MS-20*. You can use the ribbon keyboard to create an incredible sound of the '70s .

There are a lot of infos on internet but this device deserves an appropriate space on IFIXIT



TOOLS:

- [Phillips #1 Screwdriver](#) (1)
-

Step 1 — The KORG Monotron



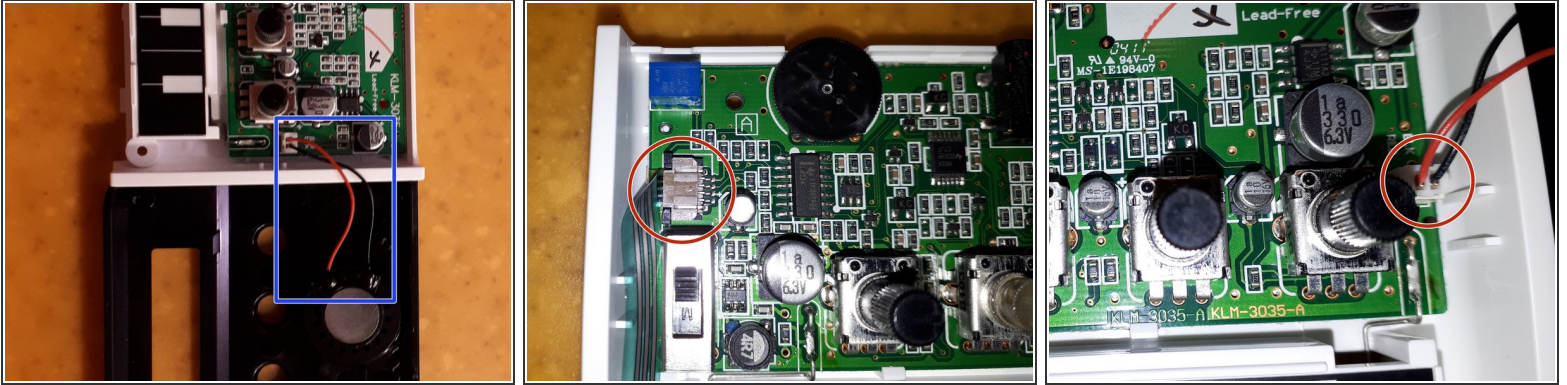
- Here it is.... the Monotron !!!
- [LM324](#) as low power op amp
- [TPA6111A2DR](#) as a stereo audio power amp.
- [TPS61071](#) as a synchronous boost converter (power supply chain) from 2 AAA battery
- [SN74AHC14](#) hex Schmitt-Trigger
- [2SC4617](#) npn bjt, [2SA1774](#) pnp bjt, [2SK433](#) fet, [IMX9](#) double bjt

Step 2 — Opening



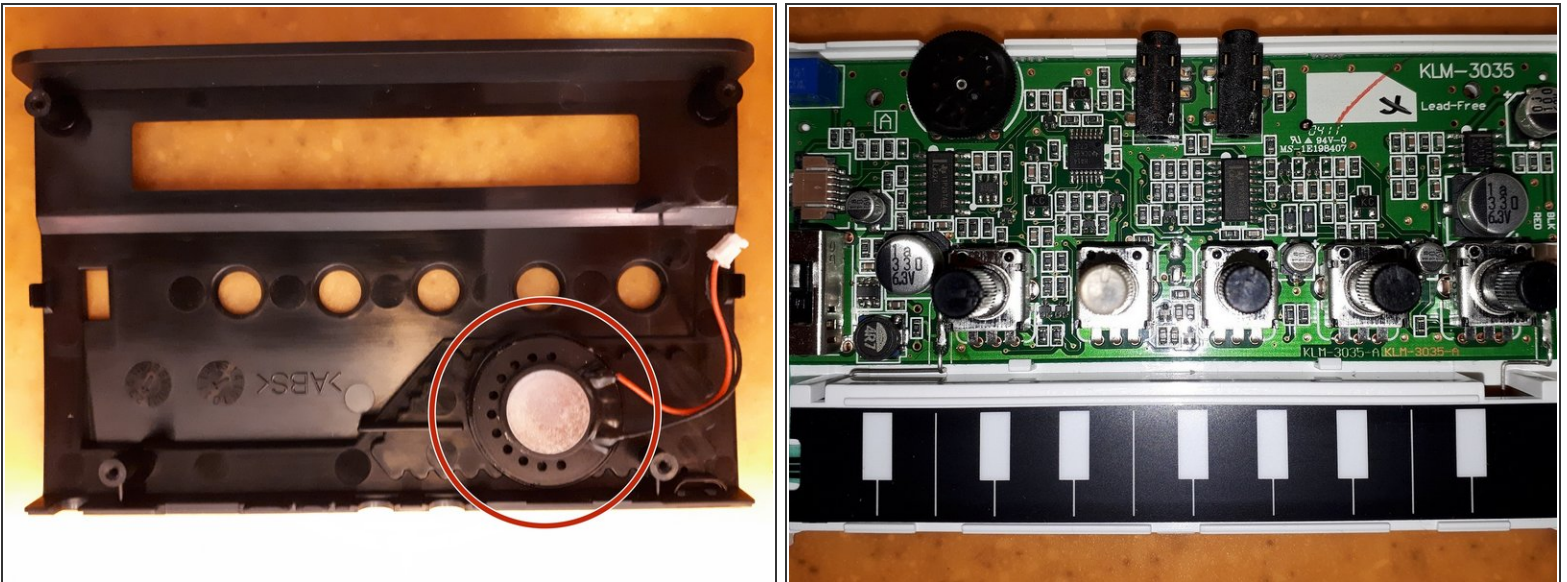
- Only 4 PH1 screws
- Note: **Made in Japan !**
- Take care at the cables between two sides

Step 3 — Remove the connectors



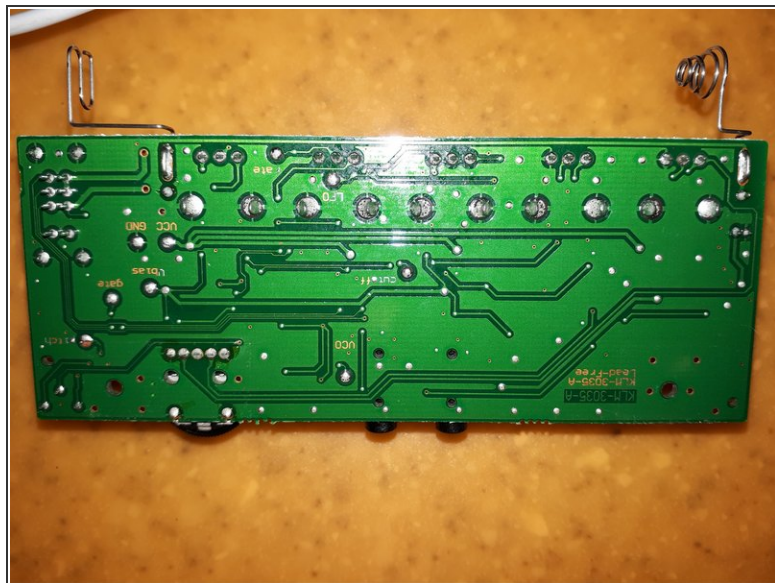
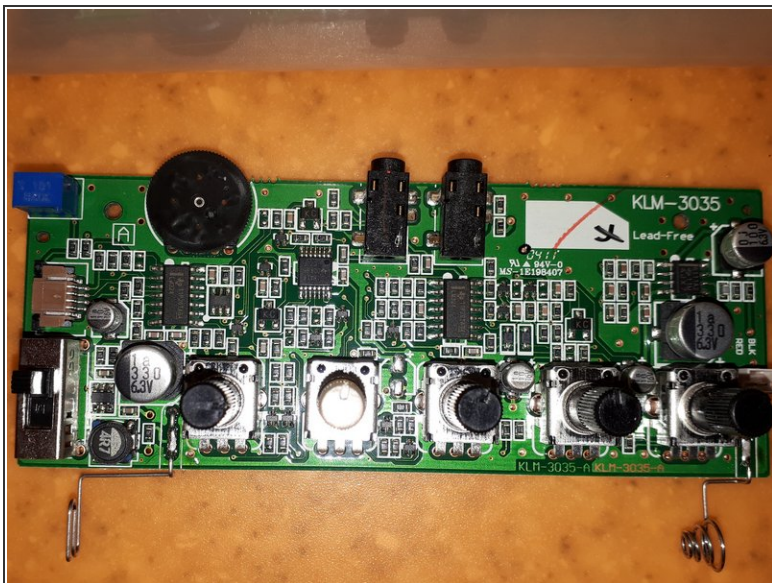
- **Remove** "the flat cable" from the ribbon controller to the pcb (pull with care using hands)
- **Remove the 2 ways connector for the speaker. Use hands (with care)**
- Take max care to the speaker controller. **Easy to remove but difficult to re insert**

Step 4 — Parts



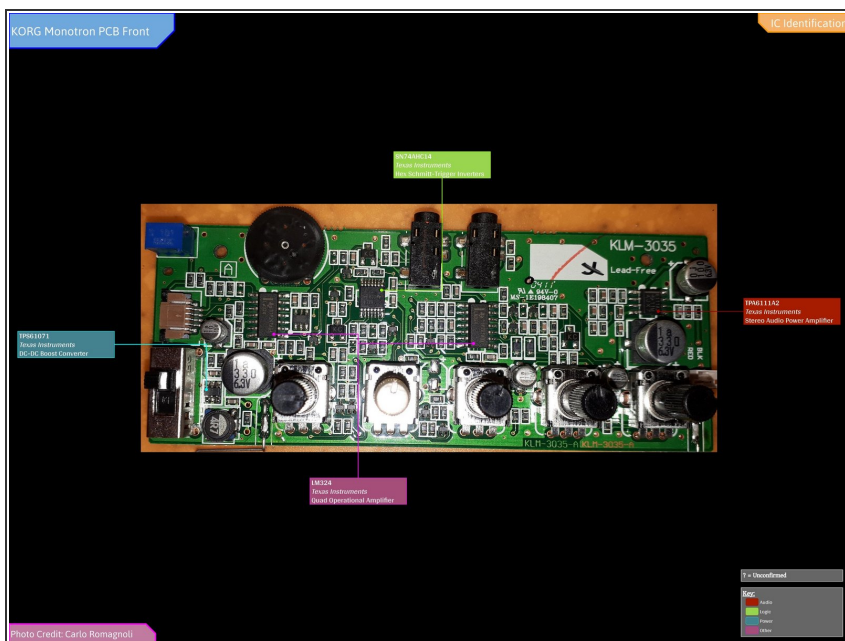
- **Loudspeaker** is glued to the enclosure

Step 5 — Board




- [Here](#) a really good image of the Monotron - Courtesy of *Tim Stinchcombe*

Step 6



- Full IC Identification:

 You may need to enlarge it to view the text.