



Samsung Epic 4G Camera Lens Replacement

Installing a new camera lens into your Samsung Epic 4G requires little experience and minimal phone disassembly.

Written By: Andrew Cunningham



INTRODUCTION

If you are not snapping photos of your friends, family, and pets with your Samsung Epic 4G phone anymore because your camera is broken, then you may want to considering replacing it.

This guide details how to regain the function of a camera lens through replacement—even after the lens breaks and temporarily takes away your ability to make new memories.

The actual [lens](#) of a camera is the main component behind a photo's quality, angles, and lighting. As the person behind the camera, however, you get to decide the vision behind the photo. Luckily, with a phone like the Samsung Epic 4G , replacing your broken camera is not a difficult process.

If you want to find out how capable you are of replacing your own camera lens, then follow this guide.

Before you start the repair, make sure you turn off your device using the power button located on the left side.



TOOLS:

- [Phillips #000 Screwdriver](#) (1)
 - [Spudger](#) (1)
-

Step 1 — Phone Case



- Slide your fingernail along the edge of the device and pull at the plastic backing.
- ⓘ While pulling the plastic backing apart from the device, you will hear a snap sound which signals that the backing has detached.

Step 2



- Pull at the plastic backing gently to remove it after hearing the snap sound.

Step 3 — Battery



- Remove the battery from the device by pulling the battery edge upwards.

Step 4 — Removing the Memory Card:



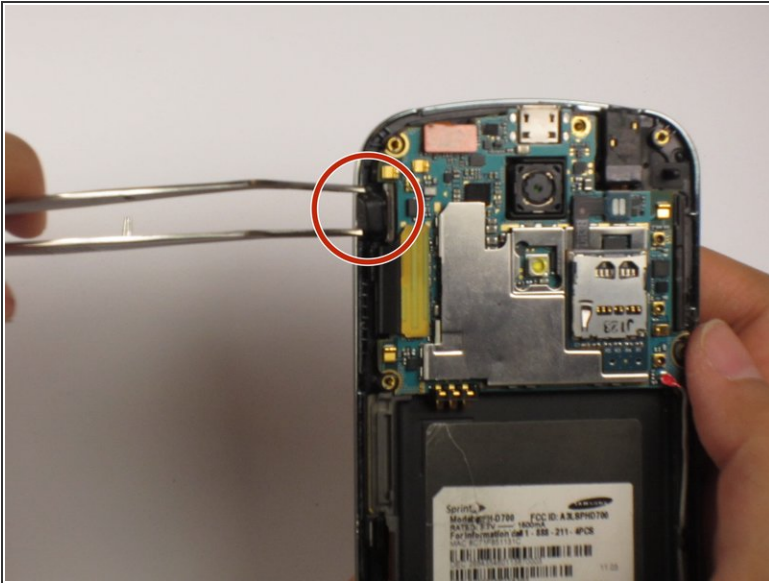
- Locate the memory card on the upper right-hand corner of the device.
- Remove the memory card from the device by gently sliding it out of its holder with your fingers.

Step 5 — Removing the Back Housing



- Remove the seven screws from the back of the phone using the Phillips #000 screwdriver.
- Separate the backing from the silver trim around the phone by using a nylon spudger to pry between the two components.
- ⓘ While separating the two components, most of the buttons (including the power button) will fall out.

Step 6 — Removing the Power Button



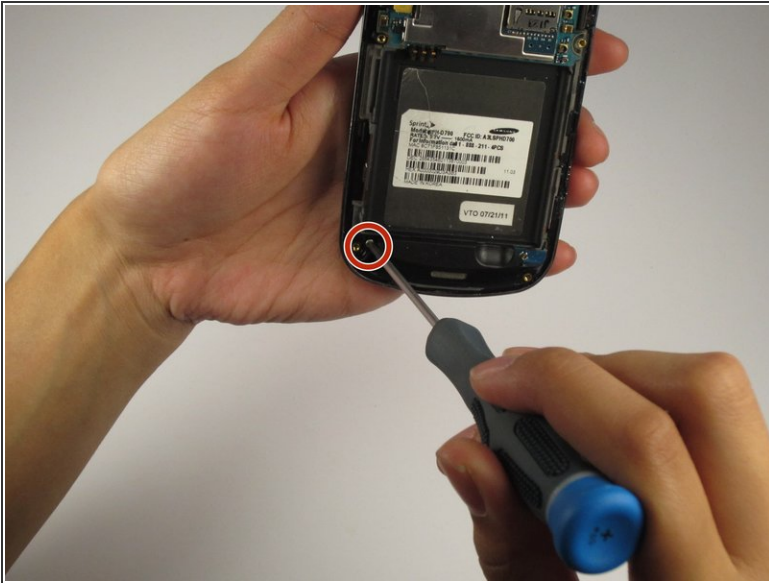
- Remove the power button using tweezers if it did not fall out in the previous step.
- ❗ At this point, you can replace the power button with a new one from a manufacturer.

Step 7 — Micro USB Port



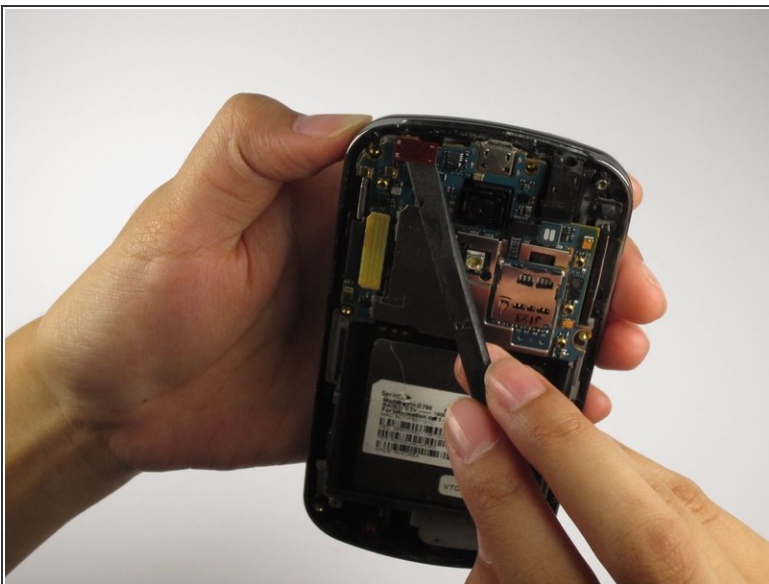
- Remove the white cable along the right side of the device (next to the battery housing) using the nylon spudger.
- Pull out both ends of the white cable. They will easily snap out of place without excessive tension.
- ⚠ Do not rip the white cables out of the device.

Step 8 — Removing the Antenna Assembly



- Remove the screw holding the antenna assembly in place using a Tri-Point Y0 screwdriver.
- Snap the antenna assembly out of the device gently using your fingers.

Step 9 — Removing the Flex Cable



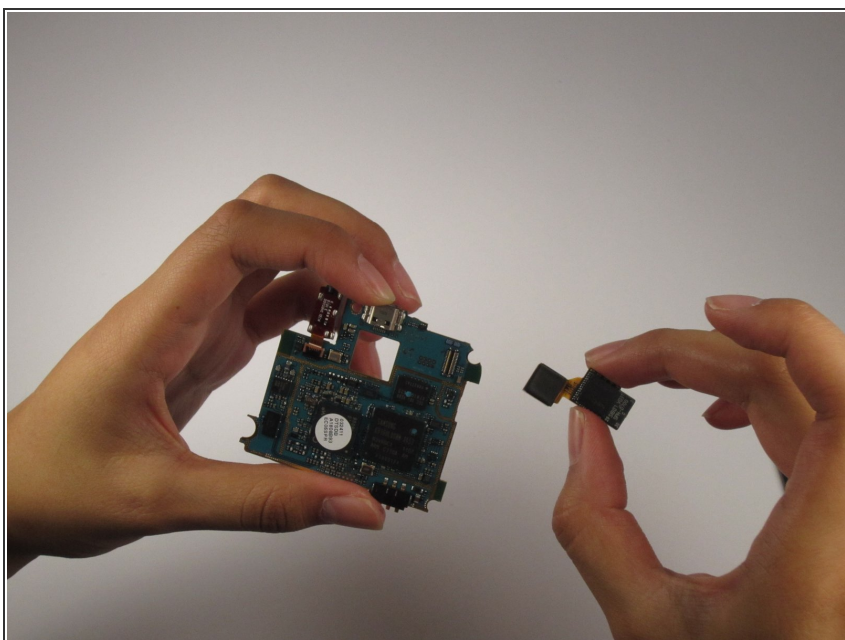
- Pry the flex cable from the top of the phone by carefully using a nylon spudger.
- Repeat this step for the larger flex cable located on the left side of the device below the smaller one.

Step 10



- Lift and remove the motherboard from the device.
- ⓘ The USB port is located at the top of the motherboard. At this point, replace the port with a new one from a manufacturer.

Step 11 — Camera Lens



- Remove and replace the camera lens with a new one from a manufacturer.

To reassemble your device, follow these instructions in reverse order.