



# Blue Yeti Disassembly

Written By: Kevin Jones



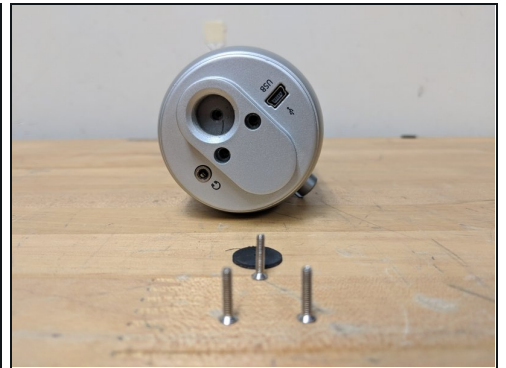
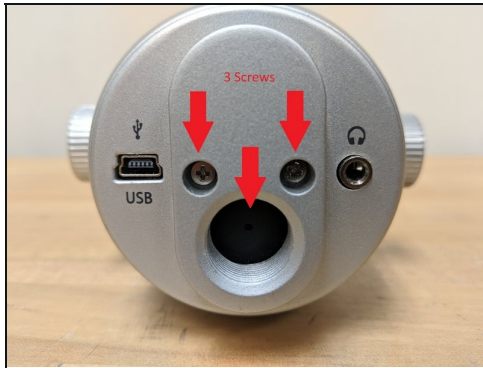
## TOOLS:

Phillips #0 Screwdriver (1)

Phillips #1 Screwdriver (1)

Large Needle Nose Pliers (1)

### Step 1 — Retrieve parts and Item and Note 3 Screws on the bottom



- First remove the Rubber inside the screwable mount area. This can easily be done with a small screw driver tip or Tweezers. From here you can remove the 3 screws using a #1 Phillips head.

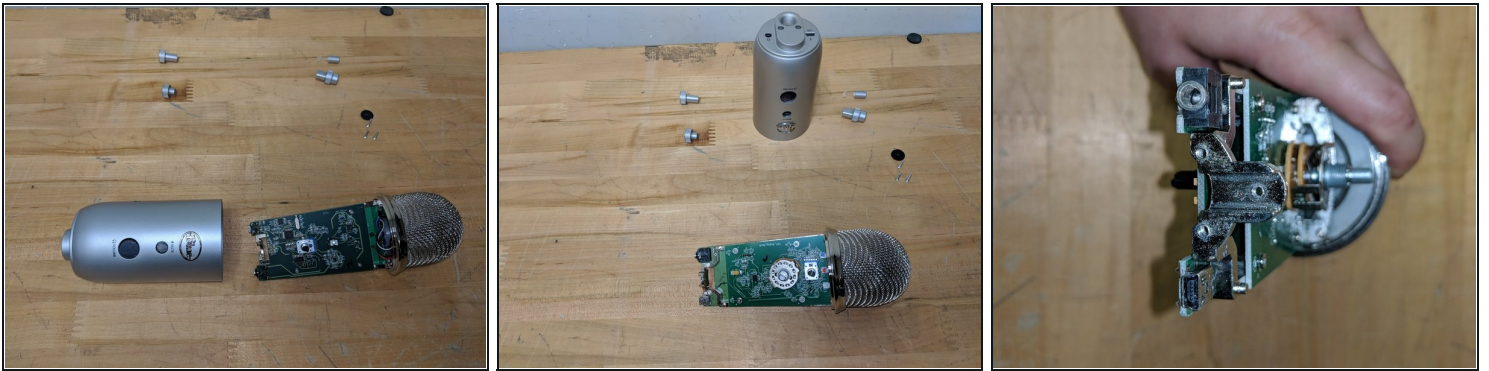
### Step 2 — Removal of the exterior buttons



- The 4 exterior buttons can be removed with any force such as fingers or any form of pliers. I used my fingers to remove and pull the buttons from their button placement. You will notice there is a lot of give from the mesh and the body.



### Step 3 — Remove the Main circuits from the housing



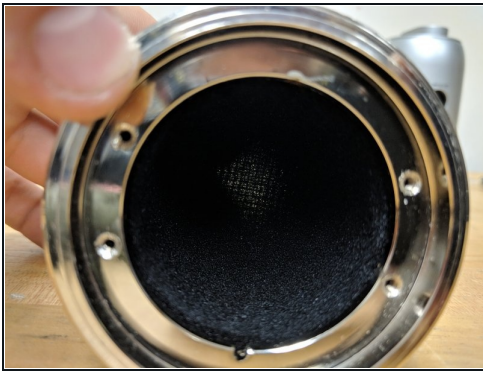
- On this step, you can easily and carefully pull the entire mic mechanism from the protective housing. On the bottom you will see where the Audio port and USB port are if you need to replace them.

### Step 4 — Removing the Mic condenser from the Mic Mesh



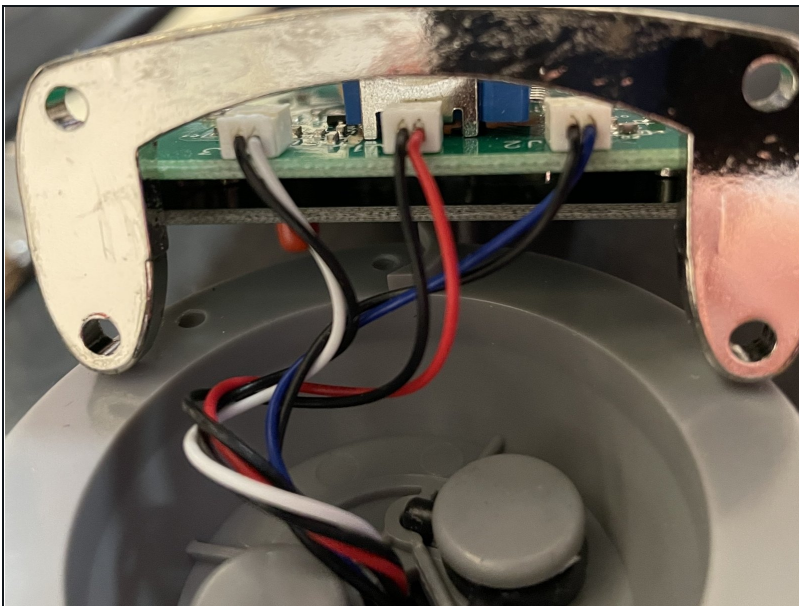
- If you look toward the mesh and the circuits you will see that it is held by 4x #0 Phillips screws. Carefully remove these and the entire cap will come from the board. There are 3 sets of wires, 1 per condenser. You will notice that they are pointed sideways, making this microphone a side condenser, not a face-pointed one.

## Step 5 — The Condensers



- As seen in the picture, this Microphone cap comes with a internal foam guard to protect the three internal mic condensers. These point outward to the side of the mic making this mic more useful from the side and not pointed at the users itself.

## Step 6 — Disconnecting the Mic Condensers



- If you need to disconnect the microphone cap from the board, pay close attention to the connections.
- There are 3 condenser, therefore 3 pairs of wires connect to the board, each with their own wire color (black & white, black & red and black & blue)

⚠ Pick a position from where to look at the board and take notes of the position of each connector. This is important, since it will directly affect the **PATTERN MODES** selected in the back side of the mic.

To reassemble your device, follow these instructions in reverse order.