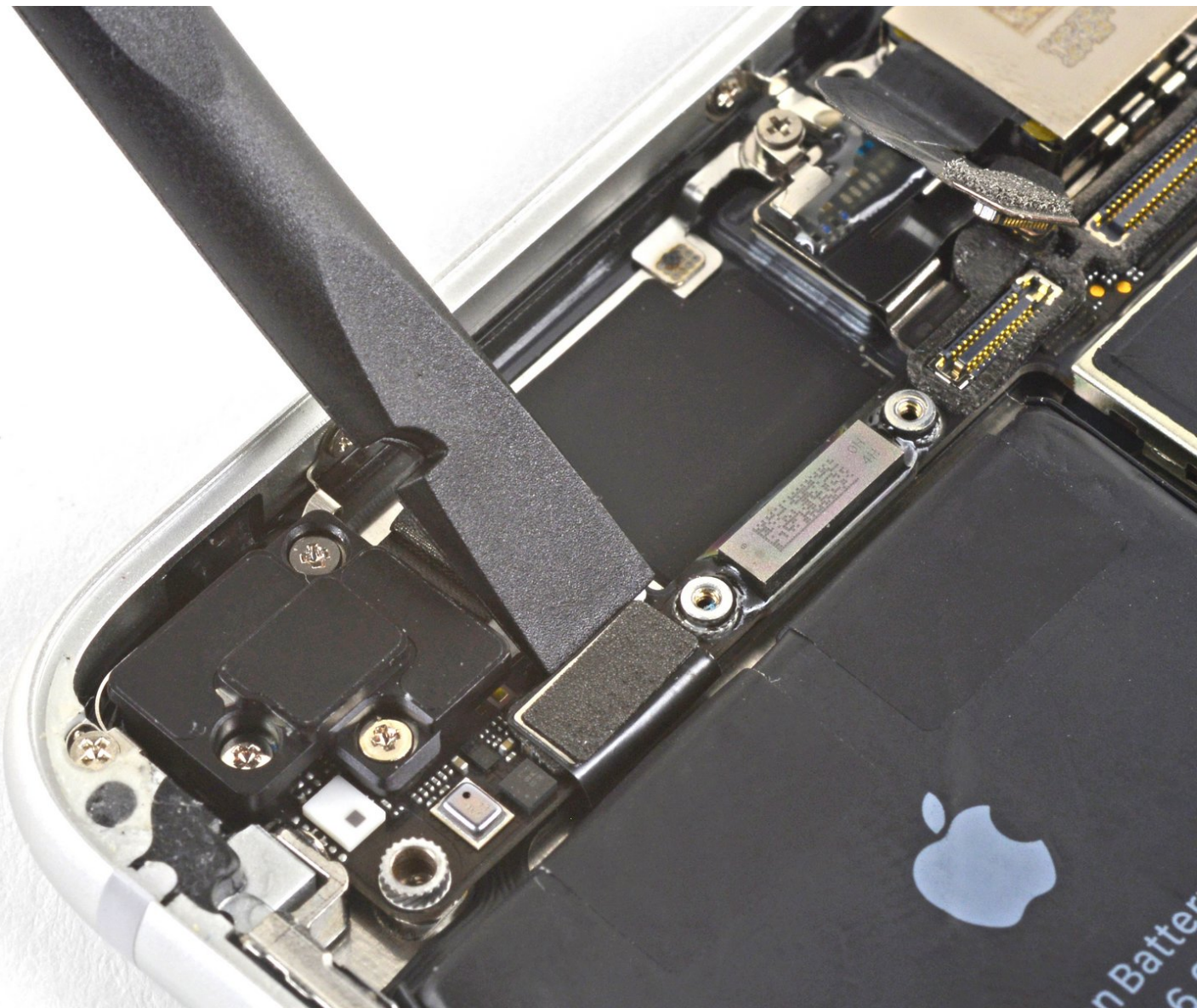




Logic Board Connectors

This is a prerequisite only guide. Disconnects most connectors and removes most screws on the logic board.

Written By: Arthur Shi



INTRODUCTION

This is a prerequisite only guide. It disconnects most of the connectors and removes most of the screws to take the motherboard out. The shots are taken such that you can't see whether the Taptic Engine is out or not.

Note that each iPhone's logic board and Touch ID fingerprint sensor are paired at the factory, so replacing the logic board will disable Touch ID *unless* you also install a replacement home button that has been properly paired to your new logic board.

Opening the iPhone 8 will damage the waterproof seals on the display. If you do not replace the adhesive seals, your phone will function normally, but will no longer be water-resistant.



TOOLS:

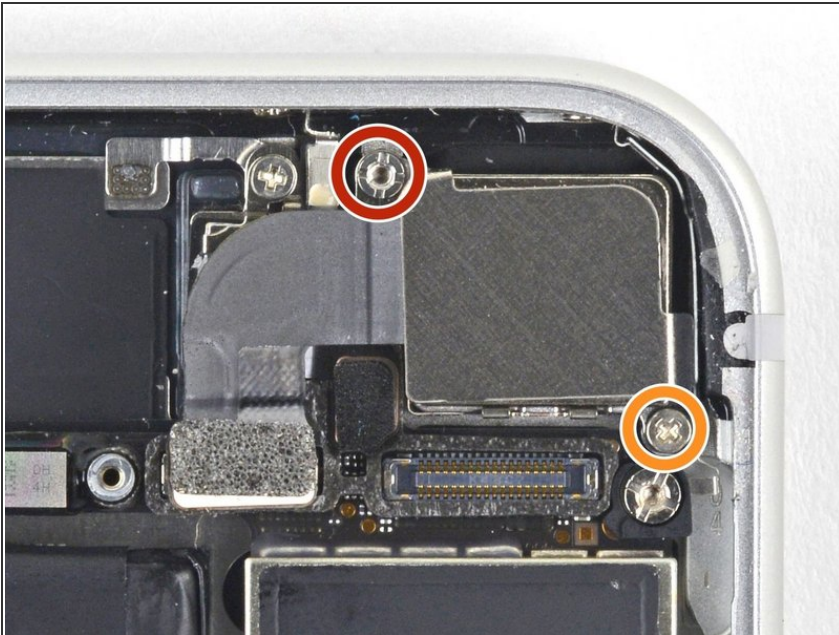
- [Spudger](#) (1)
 - [Tweezers](#) (1)
 - [Phillips #000 Screwdriver](#) (1)
 - [Standoff Screwdriver for iPhones](#) (1)
-

Step 1 — Disconnect the logic board



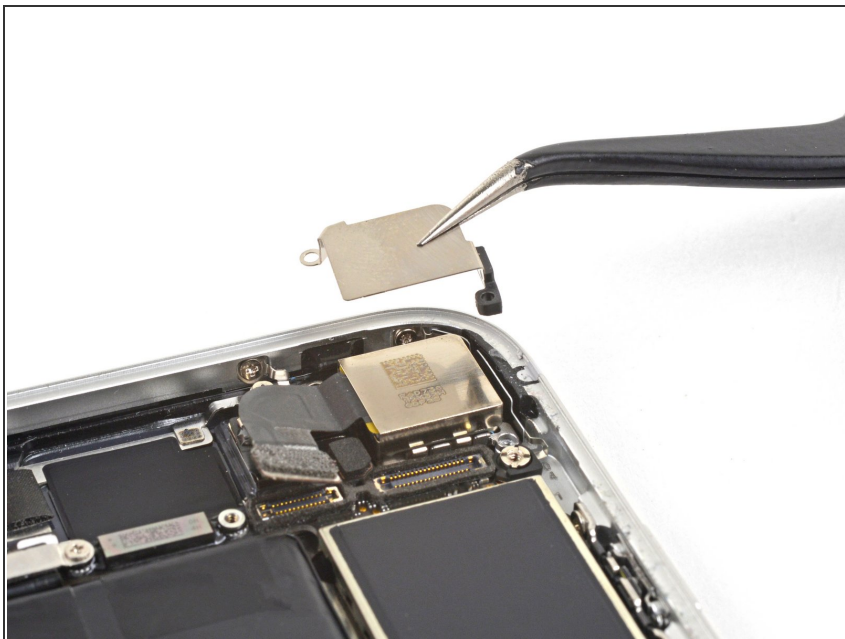
- Use the flat end of a spudger to disconnect the camera cable connector by prying it straight up from its socket.

Step 2



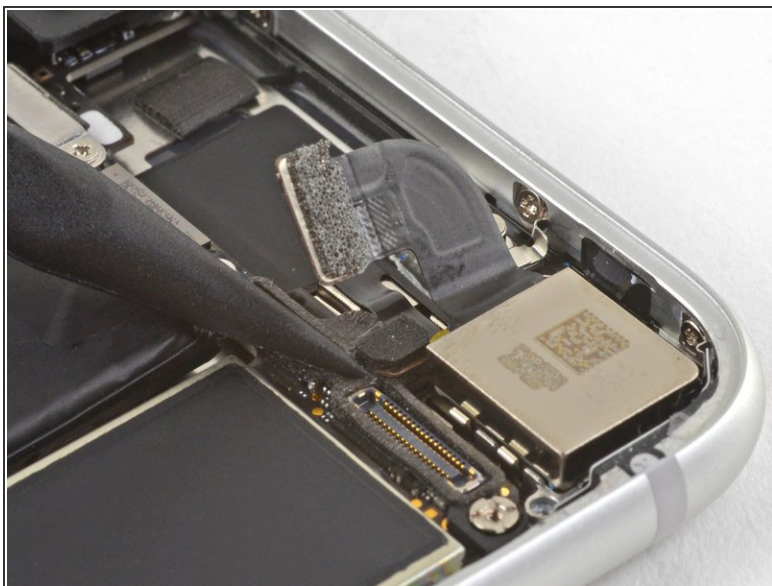
- Remove the two screws securing the rear-facing camera bracket:
 - One 3.0 mm standoff screw
 - One 3.1 mm Phillips screw
- ⓘ Standoff screws are best removed using a [standoff screwdriver](#) or bit.
- ⚠ In a pinch, a small flathead screwdriver will do the job—but use extra caution to ensure it doesn't slip and damage surrounding components.

Step 3



- Remove the rear-facing camera bracket.

Step 4



- Use the point of a spudger to disconnect the flash connector from its socket by prying it straight up.

Step 5



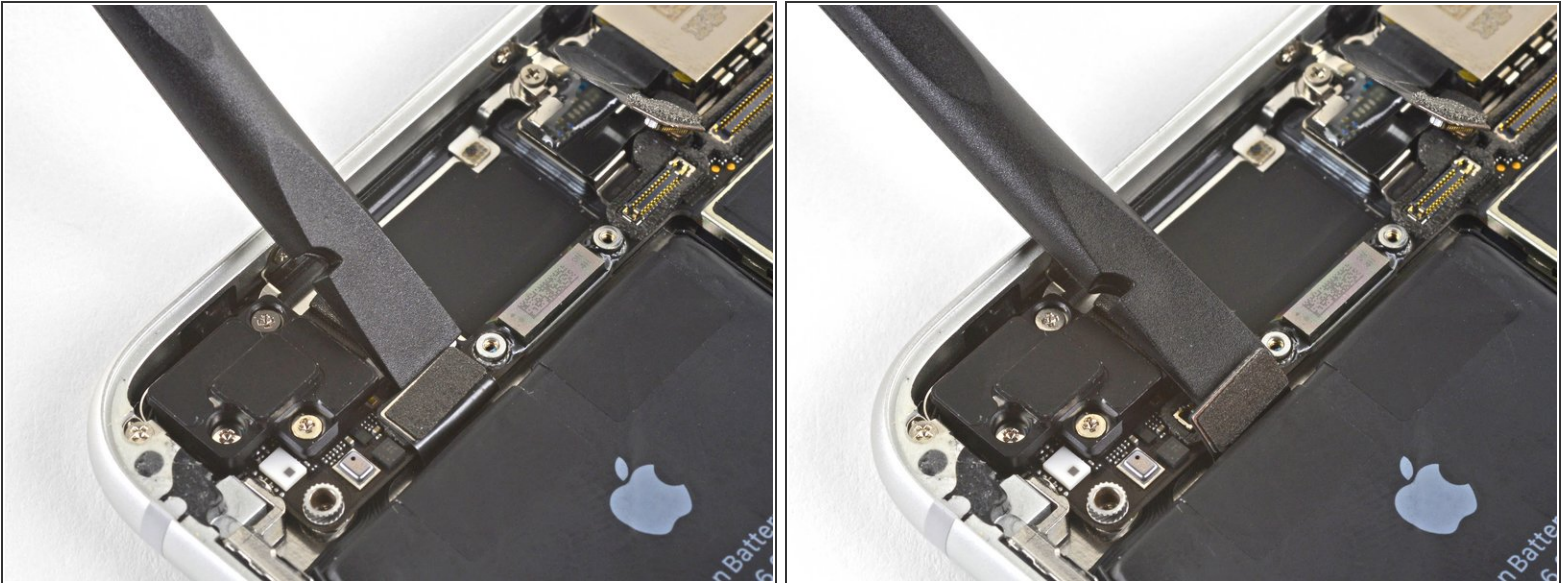
- Remove the two screws securing the upper cable bracket:
 - One 2.9 mm Phillips screw
 - One 1.3 mm Phillips screw

Step 6



- Remove the upper cable bracket.

Step 7



- Use the flat end of a spudger to pry the upper cable connector up from its socket.

Step 8 — Remove the top left antenna component



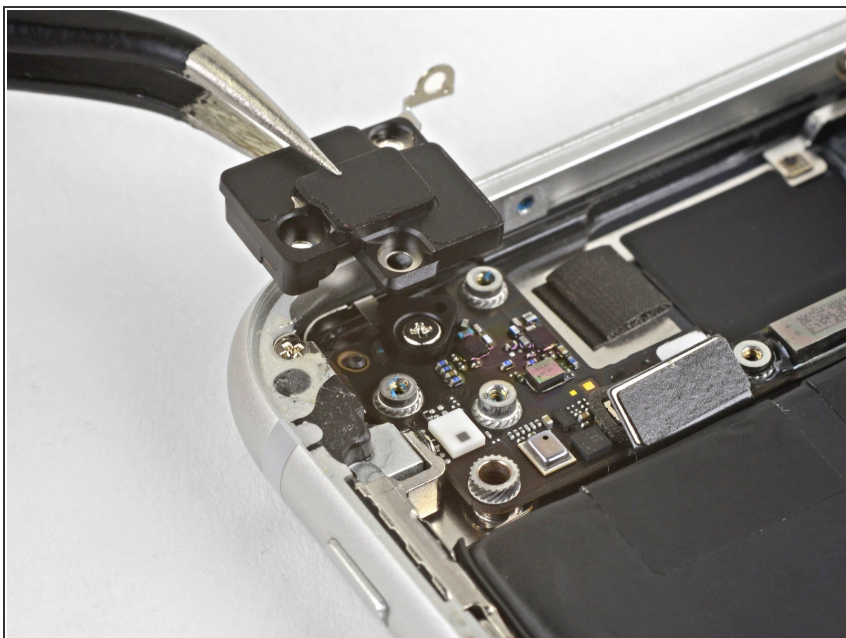
- Remove the three Phillips 1.3 mm screws securing the top left antenna component.

Step 9



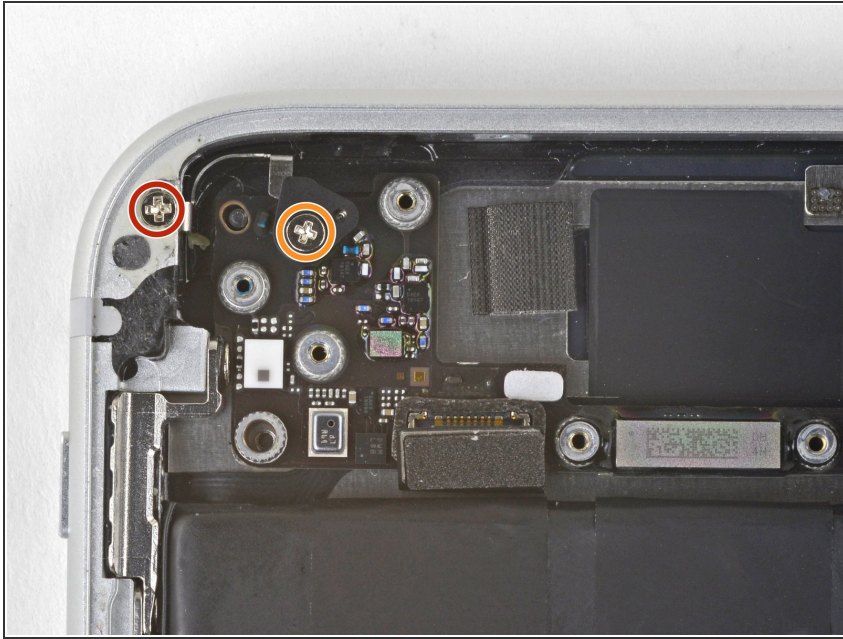
- Remove the 1.4 mm Phillips screw securing the antenna component to the top of edge of the case.

Step 10



- Remove the antenna component.

Step 11 — Remove the top left grounding clip



- Remove the two Phillips screws securing the grounding clip at the top left edge of the logic board:
 - One 1.5 mm Phillips screw
 - One 2.6 mm Phillips screw

Step 12



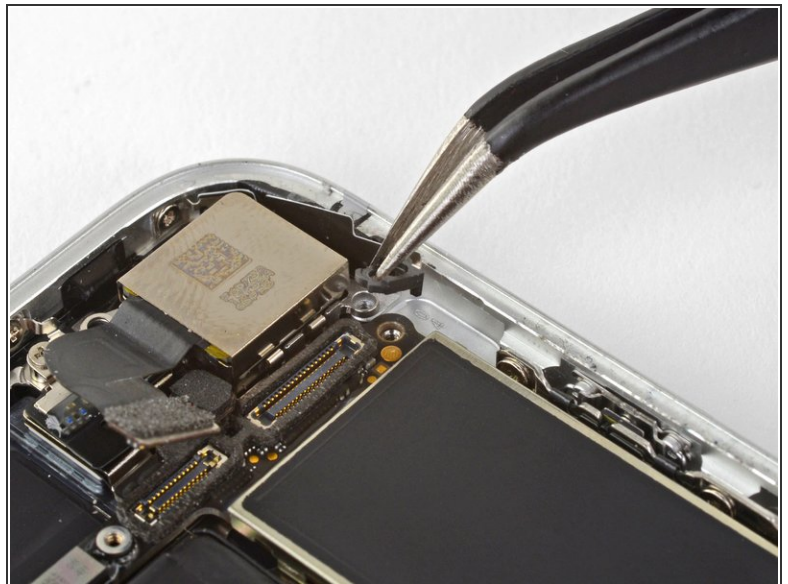
- Remove the grounding clip.

Step 13 — Unscrew the logic board



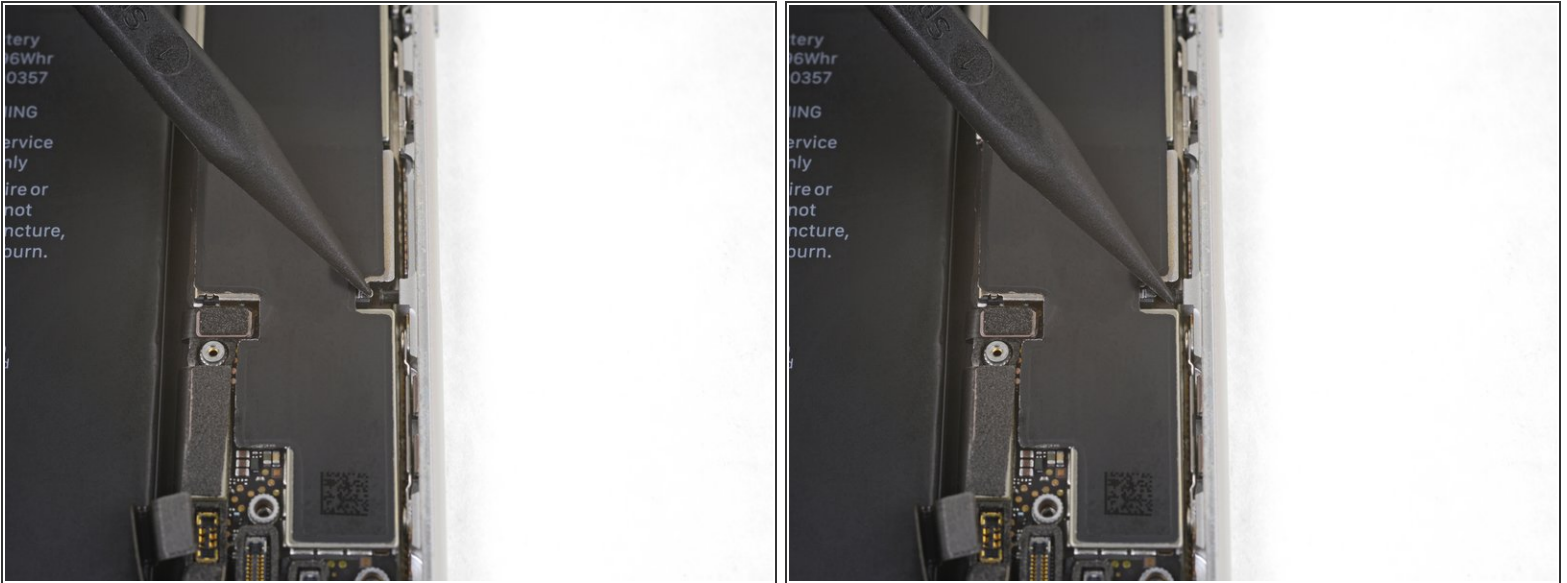
- Remove the three screws securing the motherboard:
 - One 1.8 mm Phillips screw
 - One 2.5 mm standoff screw
 - One 2.2 mm standoff screw

Step 14



- Use tweezers to gently bend the logic board grounding bracket out of the way.

Step 15



- Use the point of a spudger to move the SIM card eject plunger out of the logic board's way.

To reassemble your device, follow the above steps in reverse order.

Take your e-waste to an [R2 or e-Stewards certified recycler](#).

Repair didn't go as planned? Check out our Answers community for troubleshooting help.