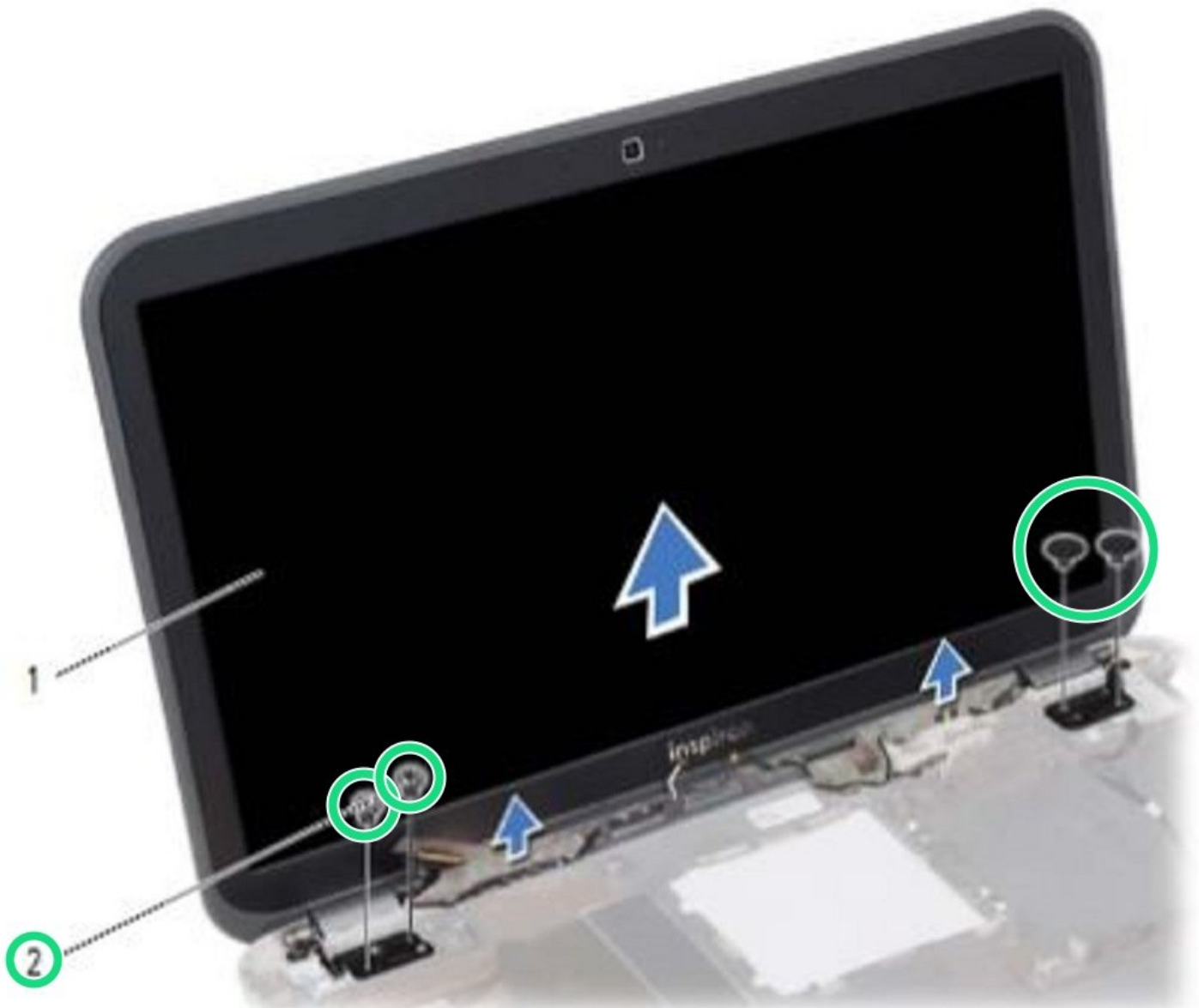




Dell Inspiron 15z 5523 Display Assembly Replacement

Written By: Terrence15



INTRODUCTION

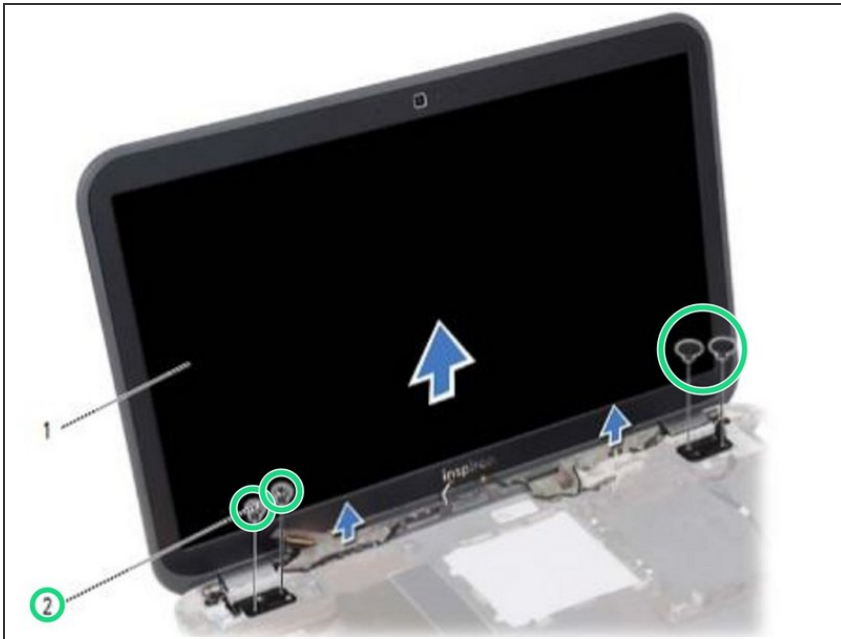
In this guide, we will be showing you how to remove and replace the Display Assembly.



TOOLS:

- [Phillips #0 Screwdriver](#) (1)
-

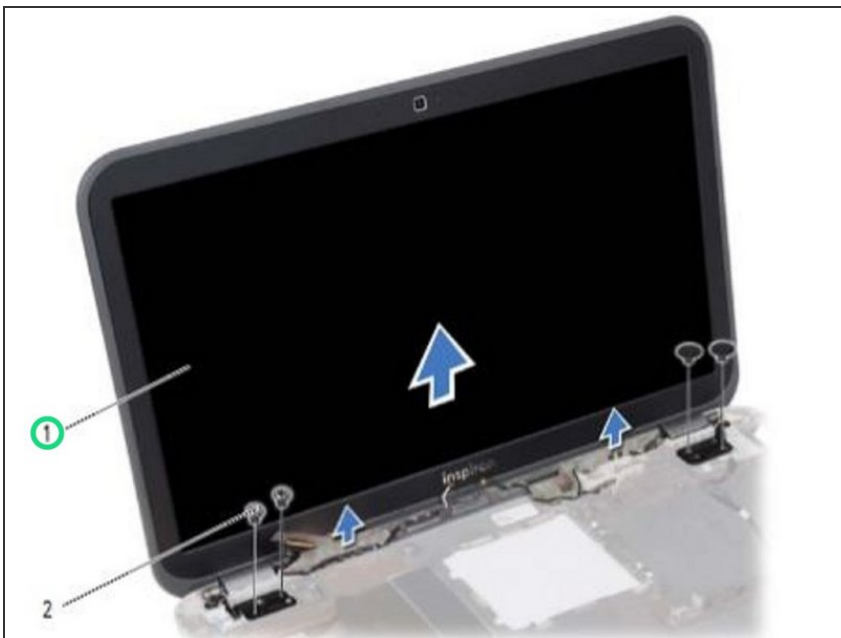
Step 1 — Remove the Screws



⚠ WARNING: Before working inside your computer, read the safety information that shipped with your computer and follow the steps in ["Before You Begin"](#).

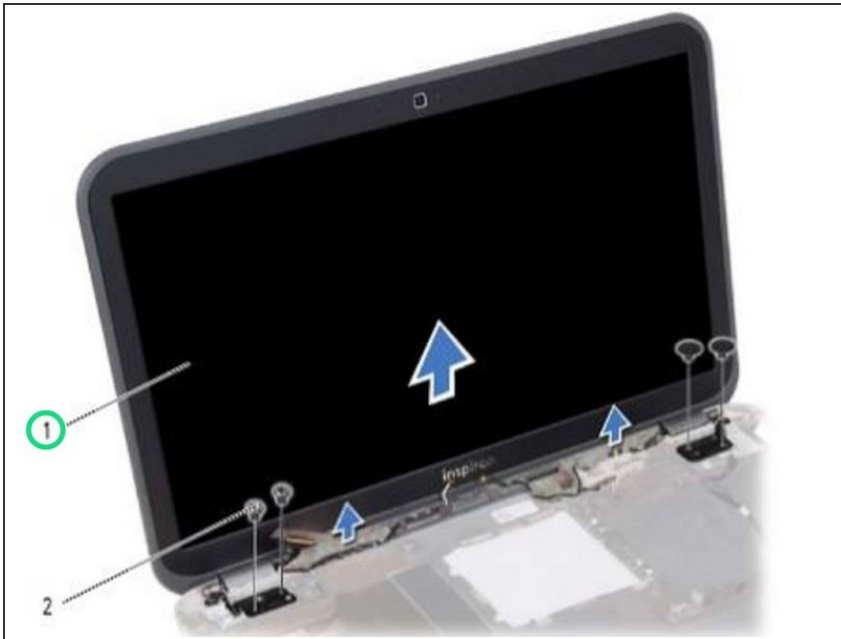
- Remove the screws that secure the display assembly to the computer base.

Step 2 — Lifting the Display Assembly



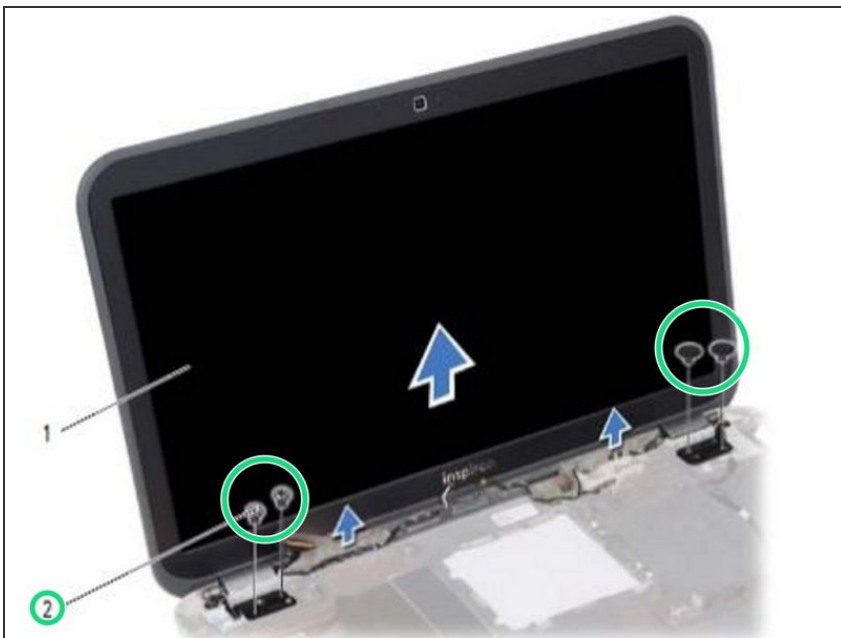
- Lift the display assembly off the computer base.

Step 3 — Placing the Display Assembly



- Place the **NEW** display assembly on the computer base and align the screw holes on the display assembly with the screw holes on the computer base.

Step 4 — Replace the Screws



- Replace the screws that secure the display assembly to the computer base.