



# Toyota Yaris (Echo) 1999-2005 optical headlight unit replacement

Your optical headlight units are worn, opaque? ...

Written By: pierre yves Marie



# INTRODUCTION

Your optical headlight units are worn, opaque?

Water is starting to seep in and you can see droplets inside?

This guide will show you how to replace those old headlight units with new ones. Your Yaris will look like it's new!

## TOOLS:

[Un tournevis cruciforme](#) (1)

## PARTS:

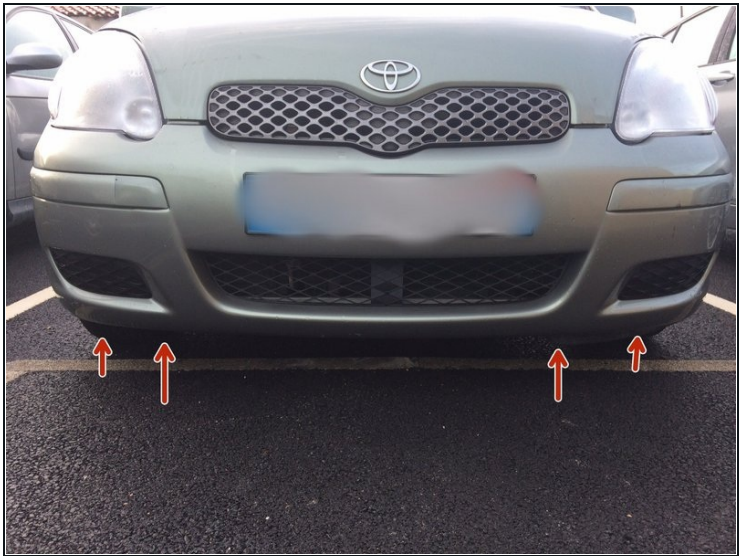
[OE 81130-0D080 / TOYOTA](#) (1)

Projecteur principal droit

[OE 81170-0D080 / TOYOTA](#) (1)

Projecteur principal gauche

## Step 1 — Unscrew the front bumper



- Unscrew the cross-head screws which attach the front bumper to the car.
  - ⓘ There are 4 screws to remove.
- ⓘ If you're only changing one headlight you need only unscrew one side. But for your peace of mind I'd advise you to remove them all.

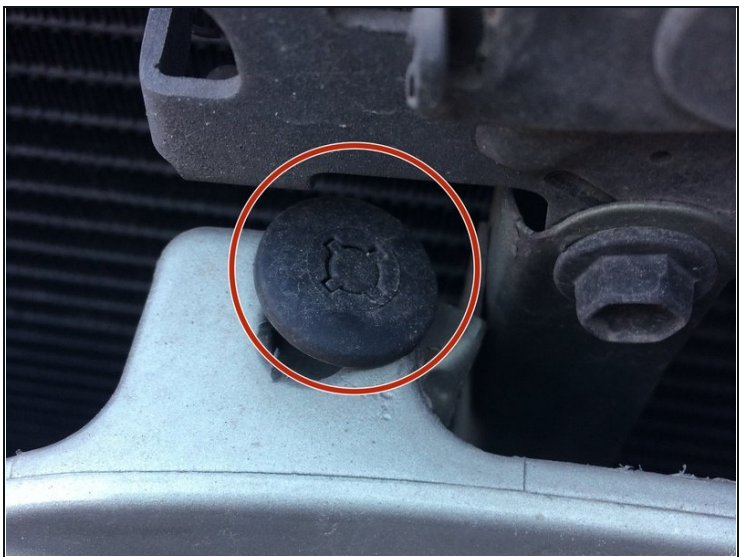
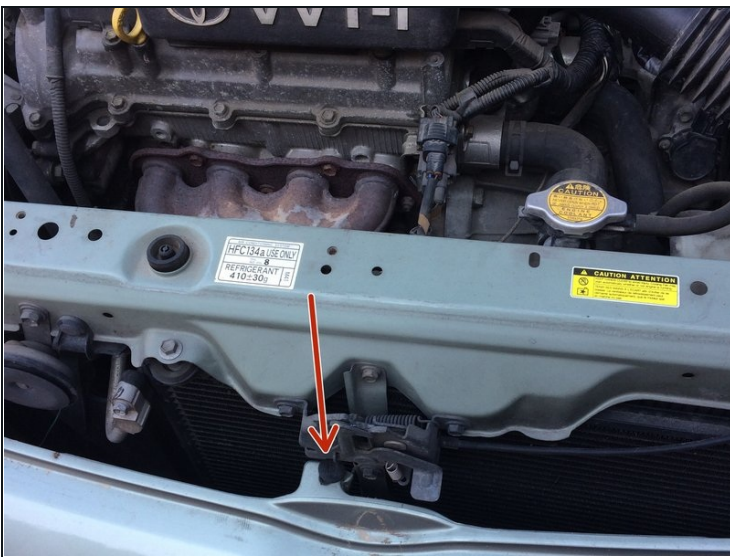


## Step 2 — Wheel arch screw



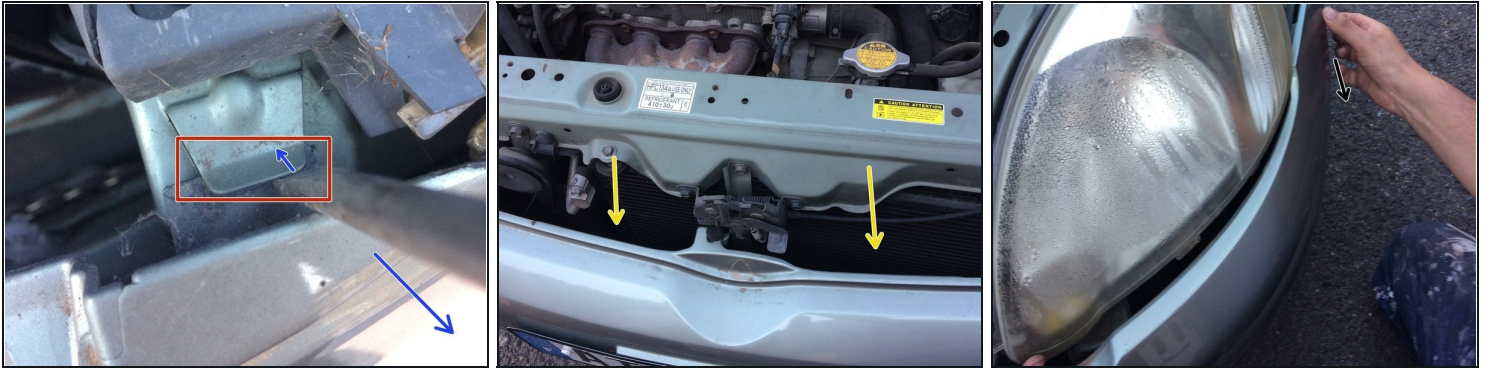
- Unscrew the cross-head screw in the wheel arch.
  - ① You can use either a spanner, or a cross-head screwdriver.

## Step 3 — Central bumper attachment



- Release the plastic clip which attaches the top of the bumper to the middle of the radiator grill.

## Step 4 — Bumper removal



- Disengage the the bumper attachment.
  - Using a large screwdriver or a small iron bar, lever it as shown until it detaches.
- There are 2 attachments to release either side of the bonnet lock.
- ① If you're only changing one headlight you only need to detach one side.
- Completely disengage the bumper from around the headlight, pulling it gently outwards.

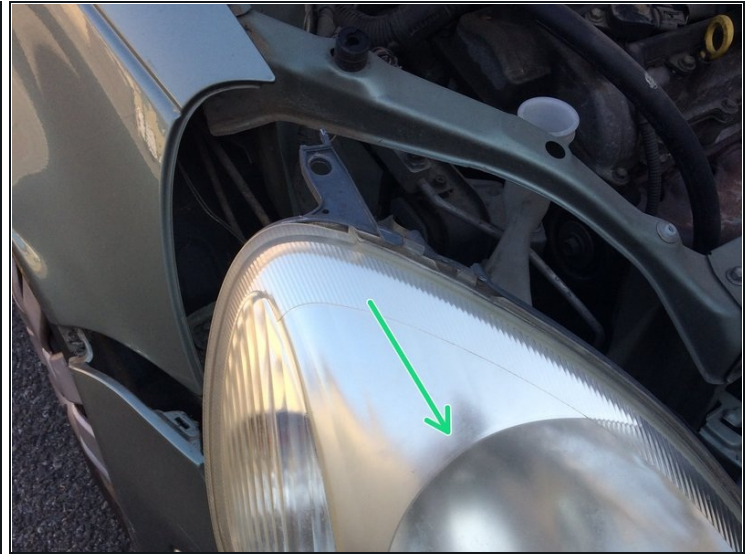
## Step 5



- Remove the cross-head screw on the side of the headlight (at the front).
- Also remove the cross-head screw from the top of the headlight.



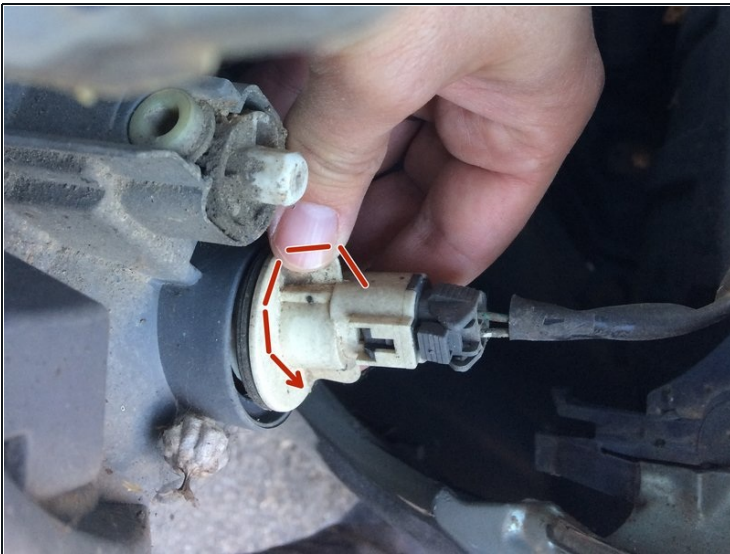
## Step 6



- Lift the top attachment of the headlight.
- Disengage the headlamp, pulling it forwards.

⚠ Be careful - the bulbs are still connected. Don't pull the headlight too far forward.

## Step 7 — Indicator bulb



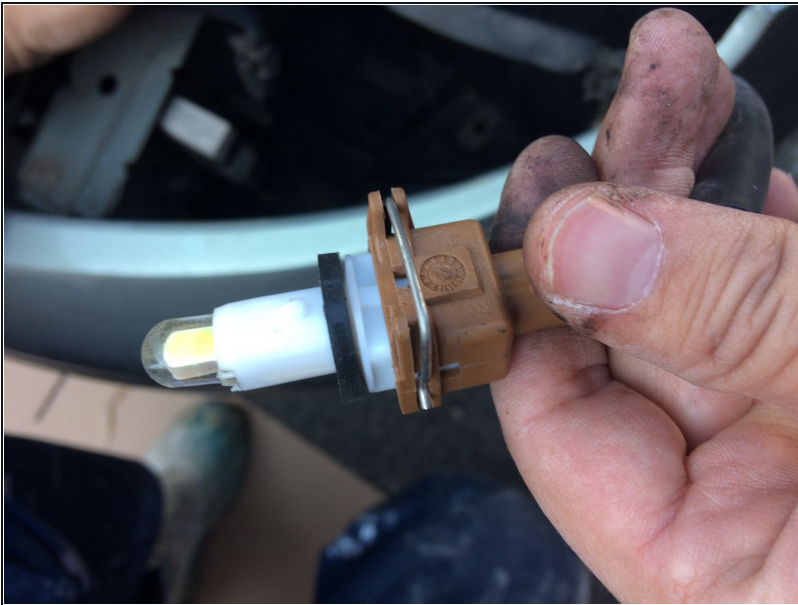
- Turn the indicator bulb connector a quarter turn counter-clockwise.
- Remove the indicator bulb.

## Step 8 — Main beam bulb



- Withdraw the rubber boot on the back of the main beam bulb.
- Unclip the clip which attaches the main beam bulb and remove the main beam bulb.

## Step 9 — Side light



- Twist the side light connector a quarter towards counter-clockwise.
- Withdraw the side light.



## Step 10 — Dip motor



- Twist headlight dip motor a quarter towards counter-clockwise.
- Withdraw the dip motor.

**⚠ On reassembly, take care to secure the motor properly in position. An adjustment may prove necessary to ensure the position of the dashboard control corresponds to the correct level of dip.**

## Step 11 — Reassembly notes



- To reassemble your headlight, take care to correctly position the headlight, before reassembling the bulbs, dip motor, and screws.
- Make sure the plastic pin on the side of the headlamp is properly inserted into the bodywork.

---

To reassemble, follow the steps in reverse order.