



---

## INTRODUCTION

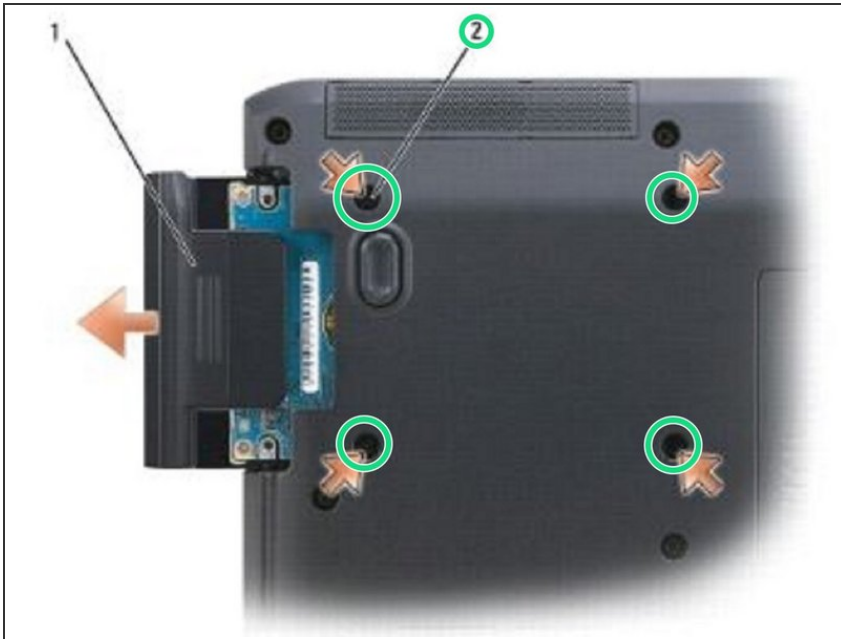
In this guide, we will be showing you how to remove and replace the Hard Drive.



### TOOLS:

- [Phillips #0 Screwdriver](#) (1)
-

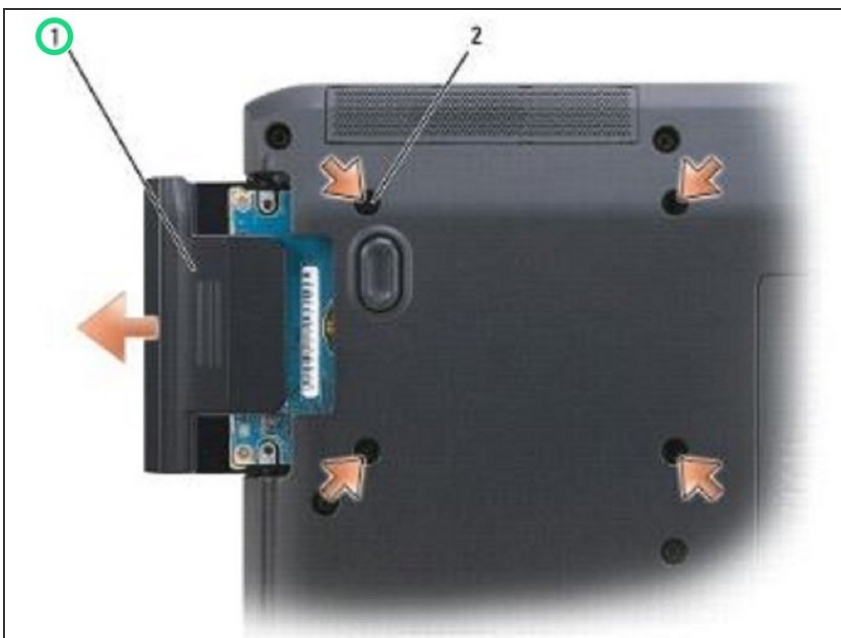
## Step 1 — Remove the Screws



⚠ Follow the procedures in [Before You Begin](#).

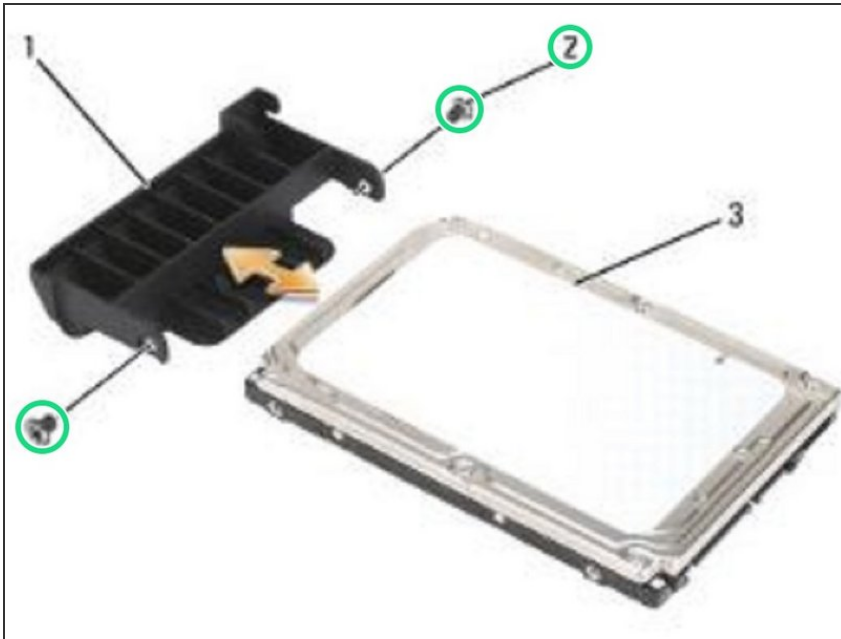
- Turn the computer over.
- Remove the four M3 x 3-mm screws that secure the hard drive.

## Step 2 — Sliding the Hard Drive



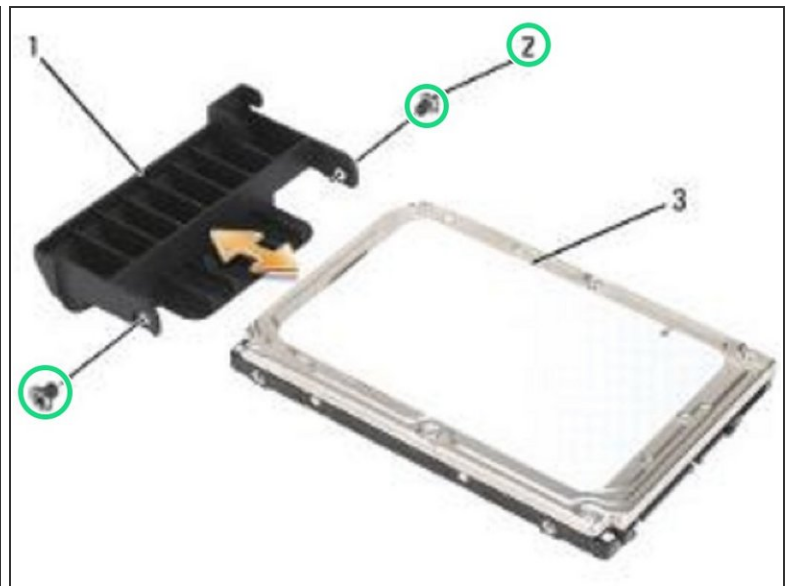
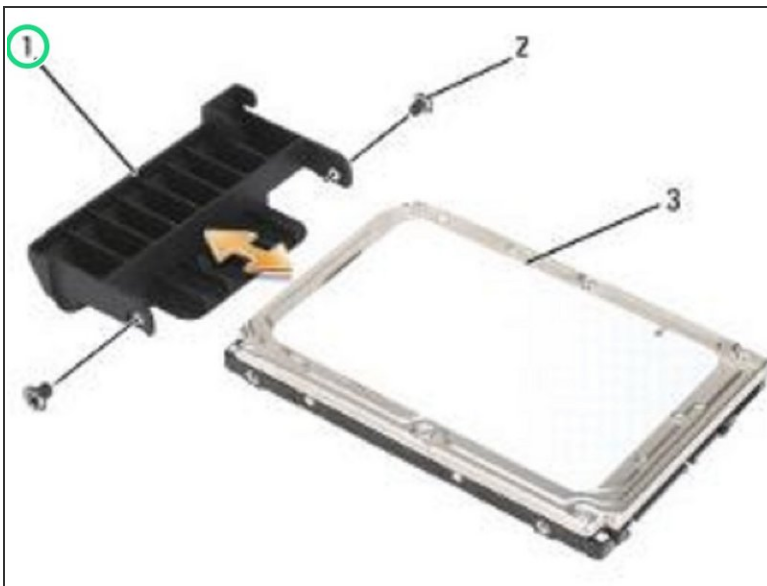
- Slide the hard drive out of the computer.

### Step 3 — Remove the Screws




- Remove the two M3 x 3-mm screws from each side of the hard drive bezel, then pull to separate the bezel from the hard drive.

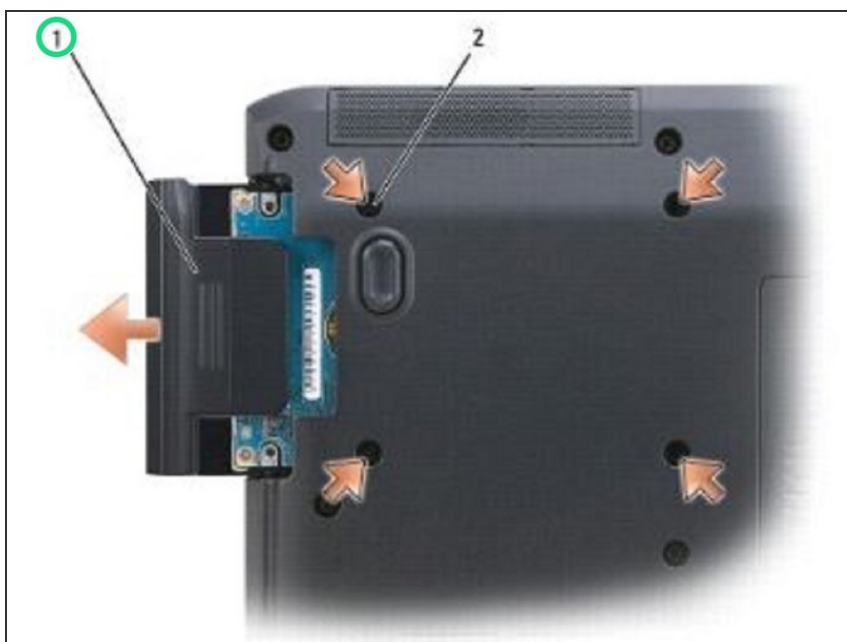
### Step 4 — Sliding the Hard Drive



- Slide the hard drive bezel onto the **NEW** hard drive, then tighten the two M3 x 3-mm screws to secure the bezel to the drive.

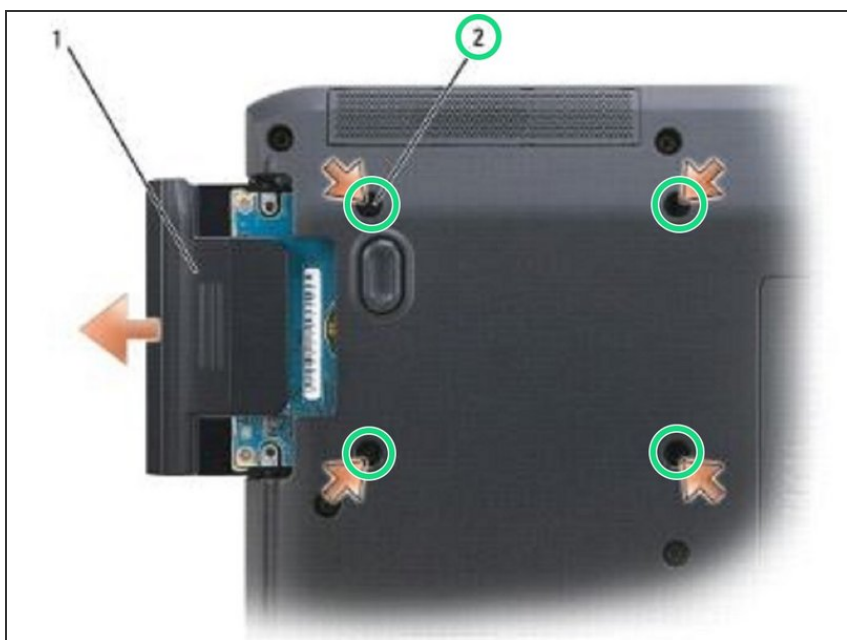
 **NOTICE:** Use firm and even pressure to slide the hard drive into place. Excessive force may result in damage to the connector.

## Step 5 — Sliding the Hard Drive



- Slide the hard drive into the hard drive bay until the drive is fully seated.

## Step 6 — Replace the Screws



- Replace the four M3 x 3-mm screws to secure the hard drive.