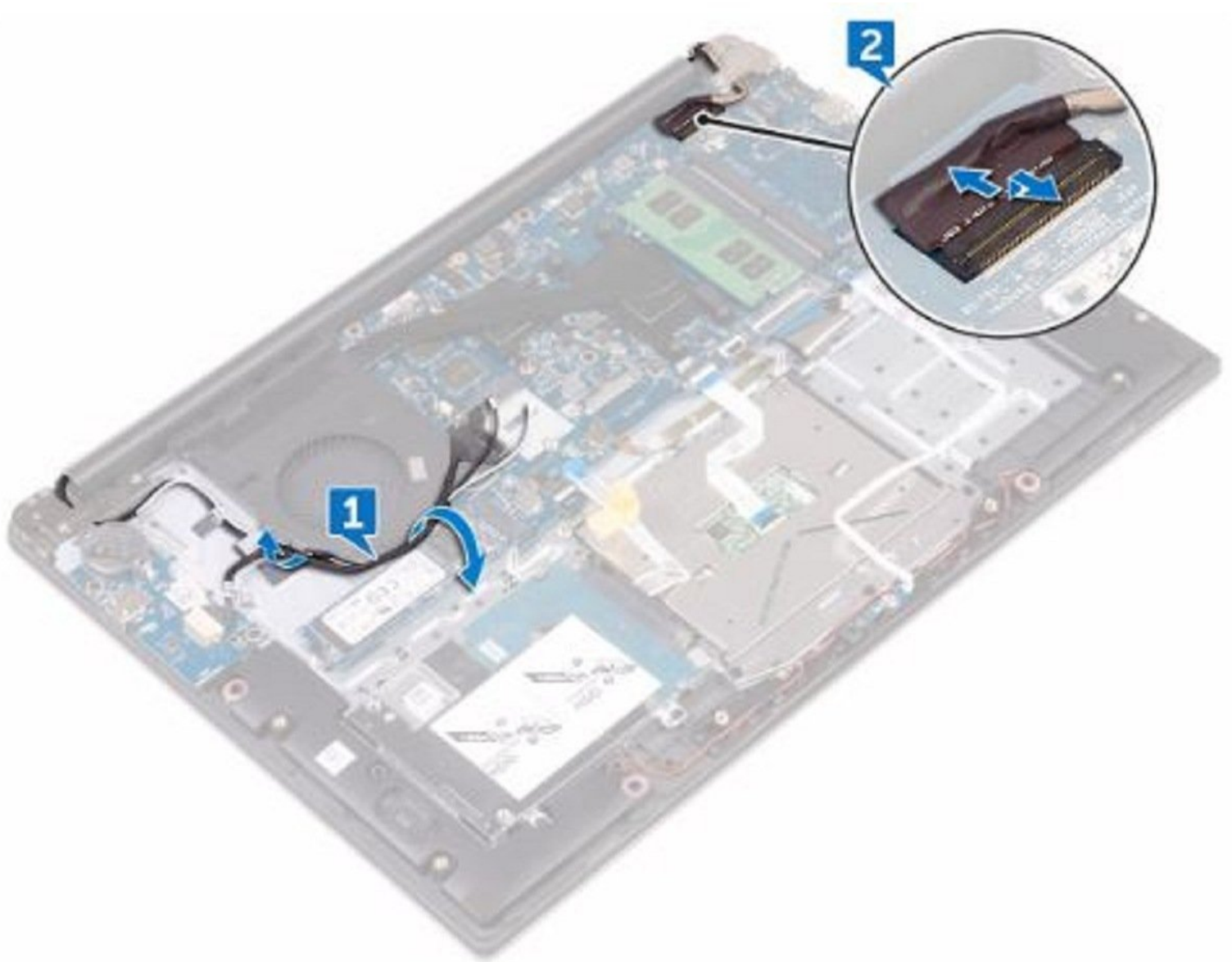




Dell Inspiron 15 7560 Display Assembly Replacement

Written By: Terrence15



INTRODUCTION

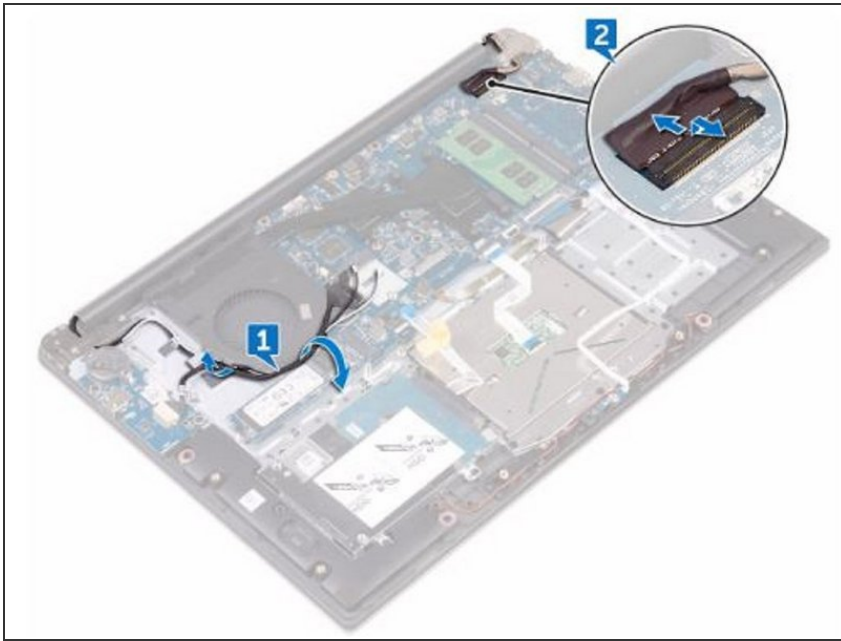
In this guide, we will be showing you how to remove and replace the Display Assembly.



TOOLS:

- [Phillips #0 Screwdriver](#) (1)
-

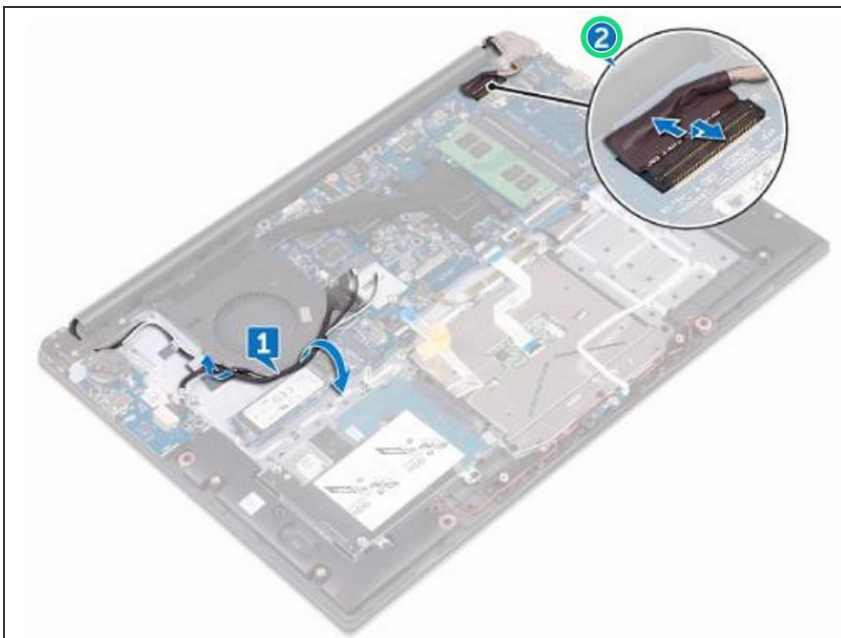
Step 1 — Note the Routing



WARNING: Before working inside your computer, read the safety information that shipped with your computer and follow the steps in [Before Working Inside Your Computer](#). After working inside your computer, follow the instructions in [After Working Inside Your Computer](#).

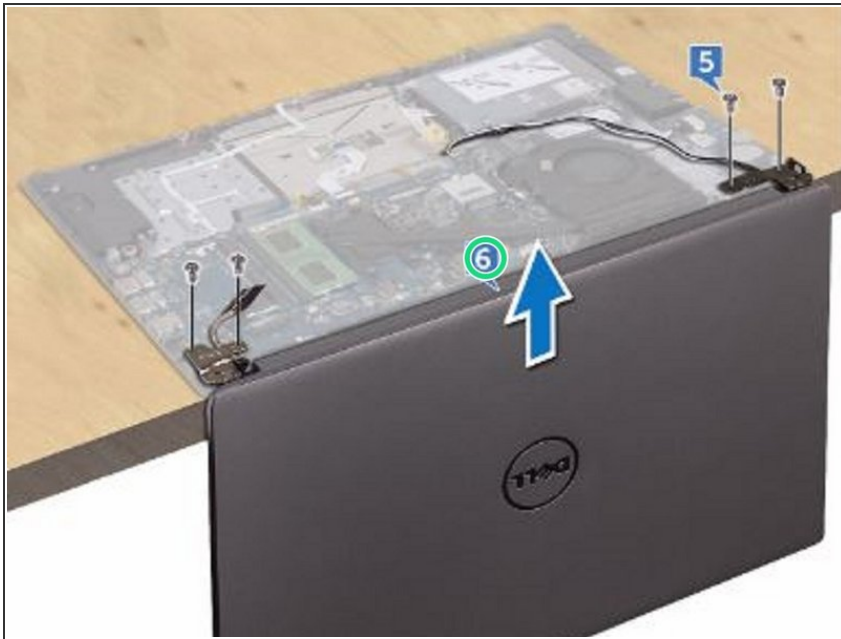
- Note the routing and remove the antenna cables from the routing guides on the fan.

Step 2 — Open the Latch



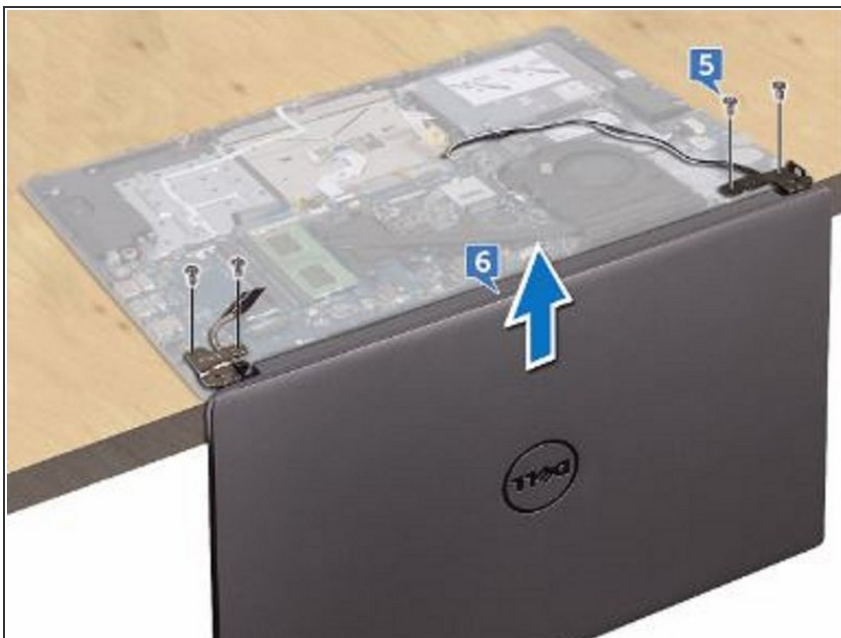
- Open the latch and disconnect the display cable from the system board.

Step 3 — Open the Display



- Open the display at an angle of 90 degrees.

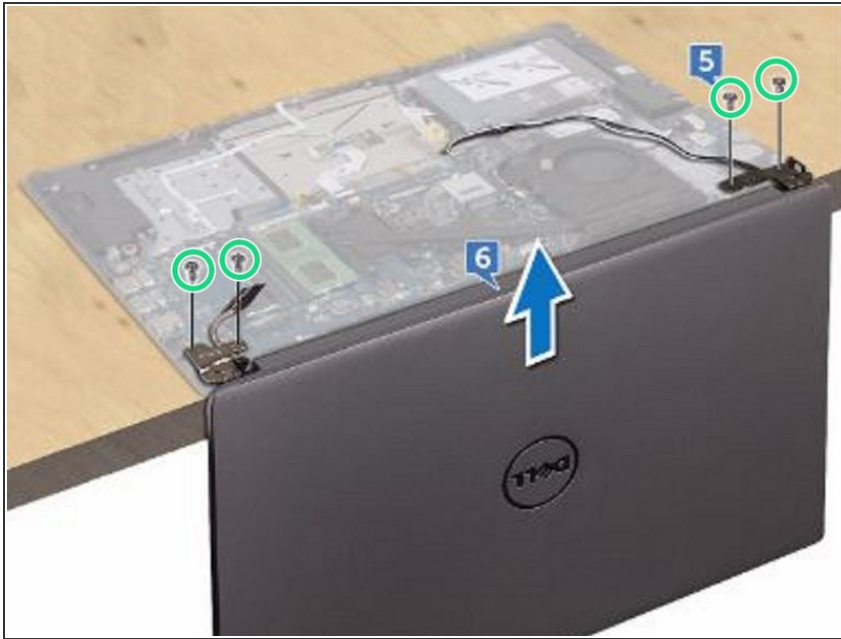
Step 4 — Placing the Computer



- Place the computer on the edge of a table so that the palm rest and keyboard assembly is on the table

and the display assembly extends past the table edge with the display hinges facing up.

Step 5 — Remove the Screws



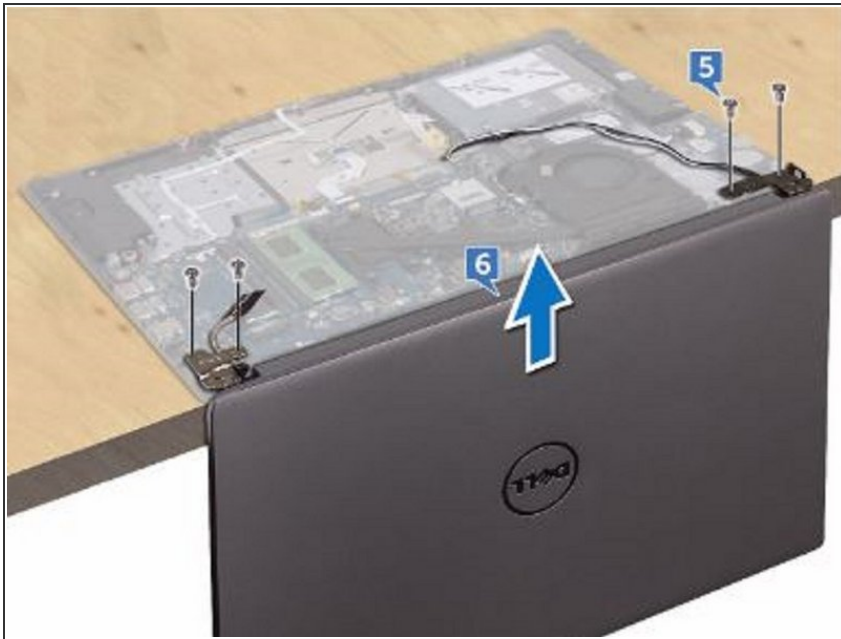
- Remove the four screws (M2.5x5) that secure the display hinges to the palm rest and keyboard assembly.

Step 6 — Lifting the Display Assembly



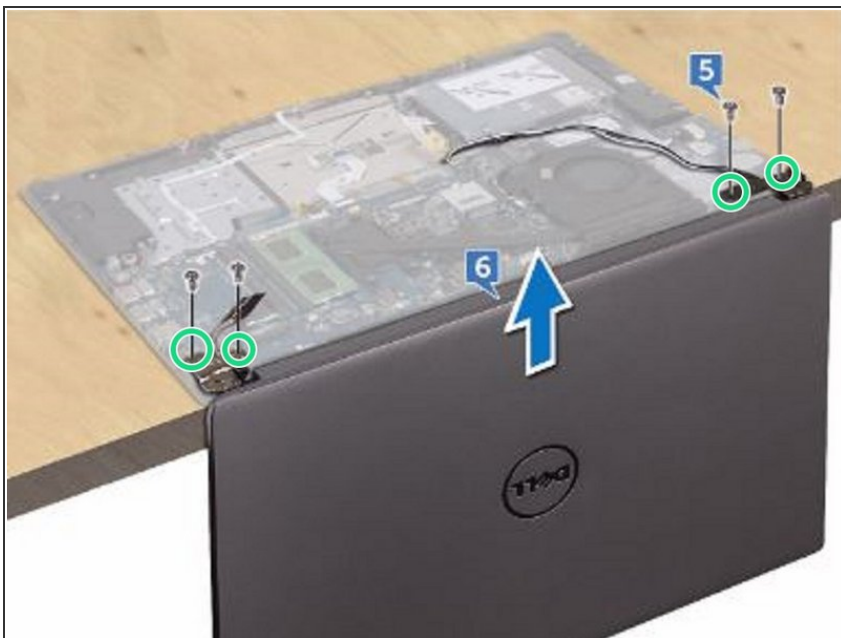
- Lift the display assembly off the palm rest and keyboard assembly.

Step 7 — Placing the Assembly



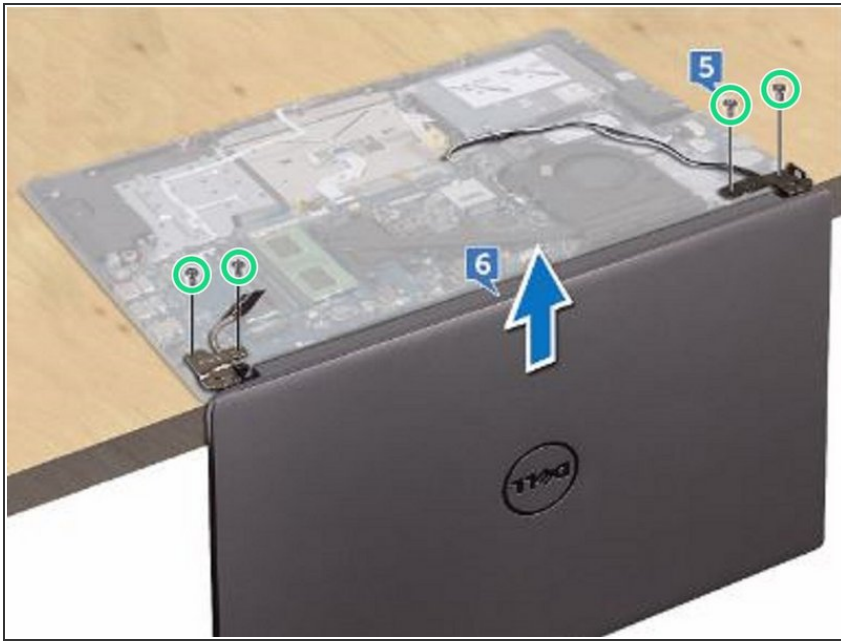
- Place the palm rest and keyboard assembly on the edge of a table with the keyboard facing down.

Step 8 — Align the Screw Holes



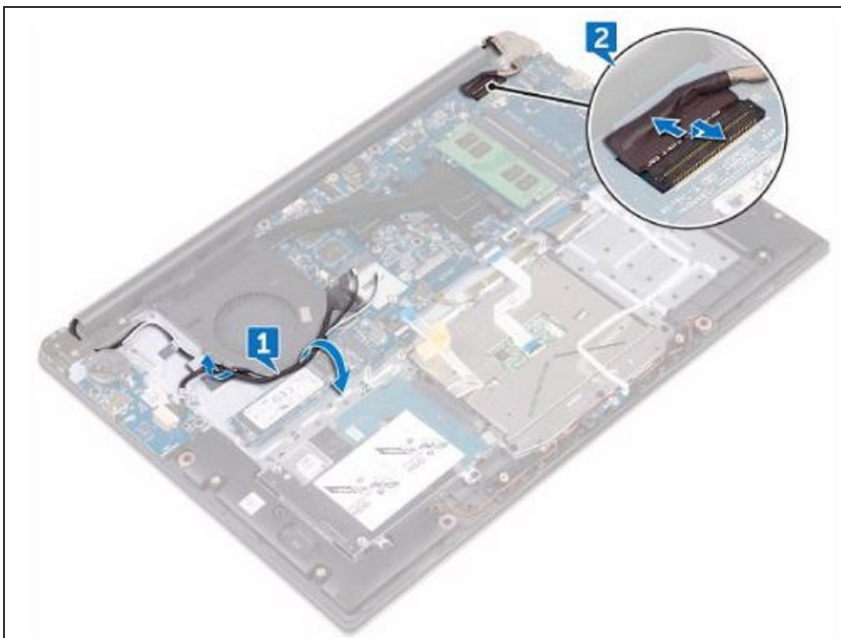
- Align the screw holes on the display hinges with the screw holes on the palm rest and keyboard assembly.

Step 9 — Replace the Screws



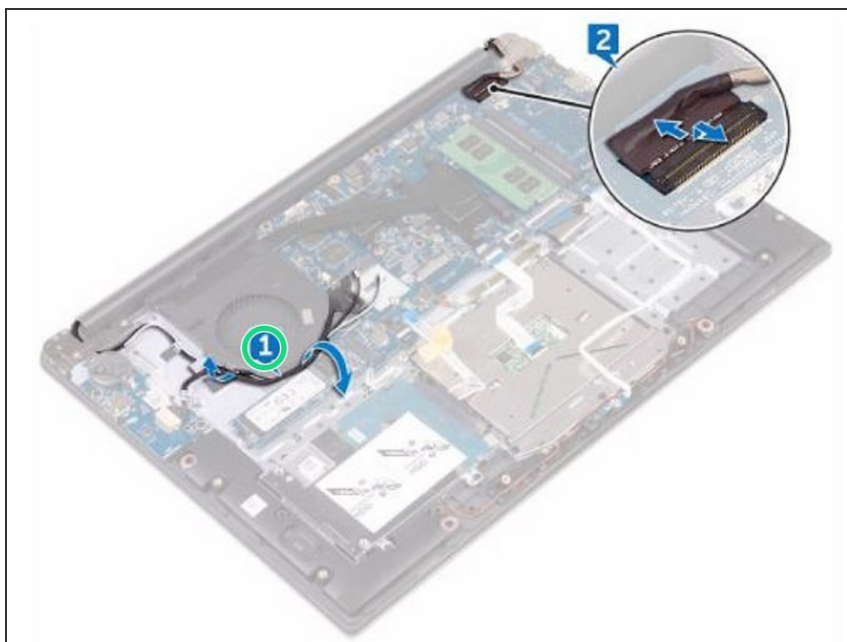
- Replace the four screws (M2.5x5) that secure the display assembly to the palm rest and keyboard assembly.

Step 10 — Close the Display



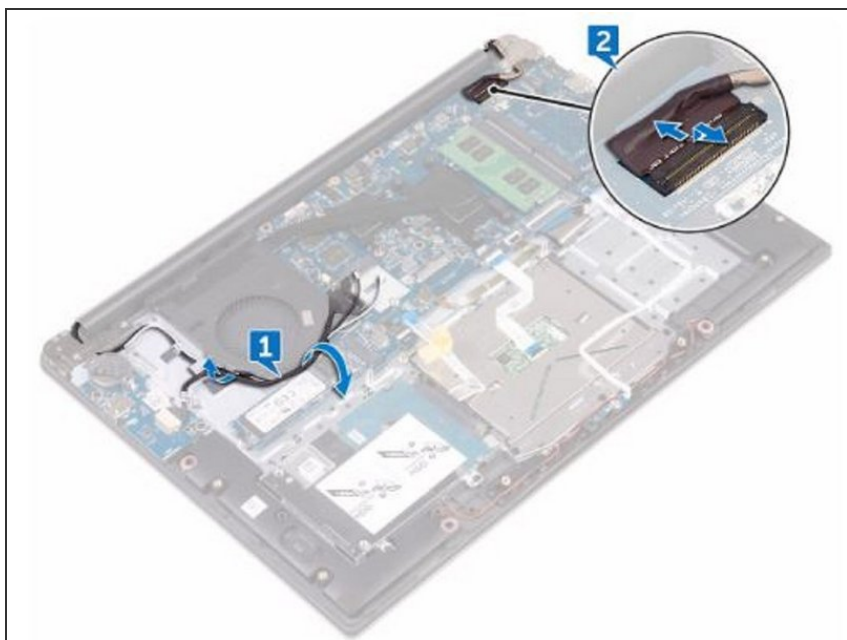
- Close the display and turn the computer over.

Step 11 — Sliding the Display Cable



- Slide the display cable into the connector on the system board and close the latch to secure the cable.

Step 12 — Routing the Antenna Cables



- Route the antenna cables through the routing guides on the fan.