



Dell Inspiron 15 7560 Battery Replacement

Written By: Terrence15



INTRODUCTION

In this guide, we will be showing you how to remove and replace the Battery.



TOOLS:

- [Phillips #0 Screwdriver](#) (1)



PARTS:

- [Dell WDX0R Replacement Battery](#) (1)

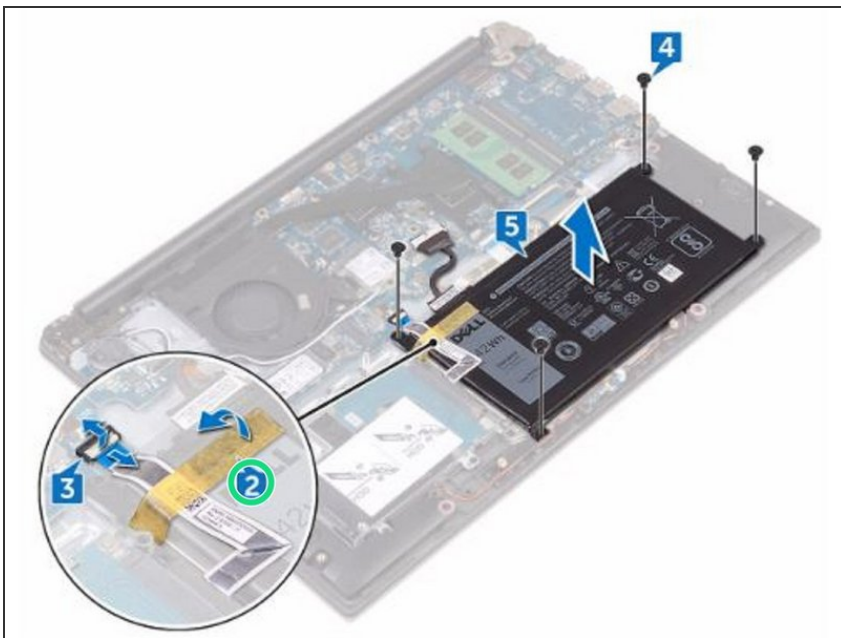
Step 1 — Disconnect the Battery Cable



⚠ WARNING: Before working inside your computer, read the safety information that shipped with your computer and follow the steps in [Before Working Inside Your Computer](#). After working inside your computer, follow the instructions in [After Working Inside Your Computer](#).

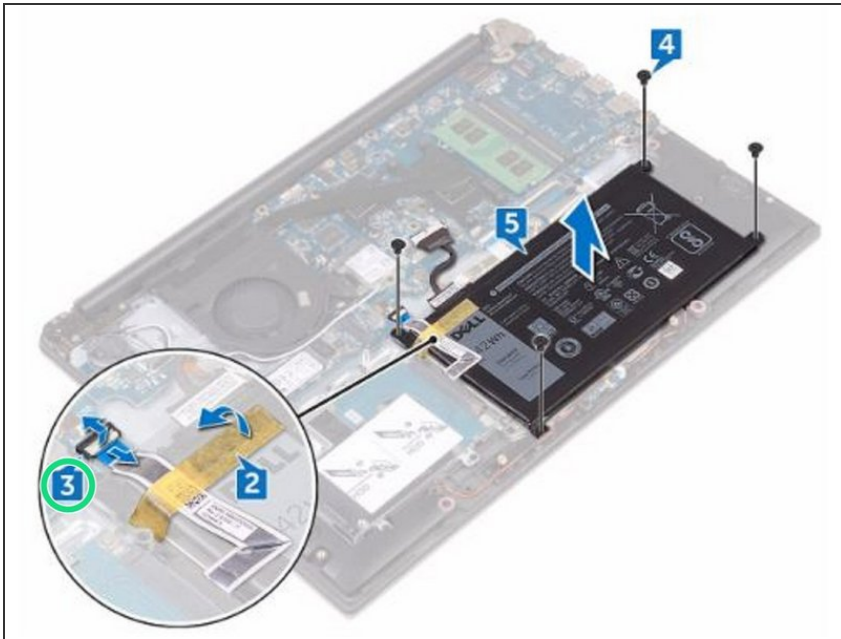
- Disconnect the battery cable from the system board.

Step 2 — Peel the Tape



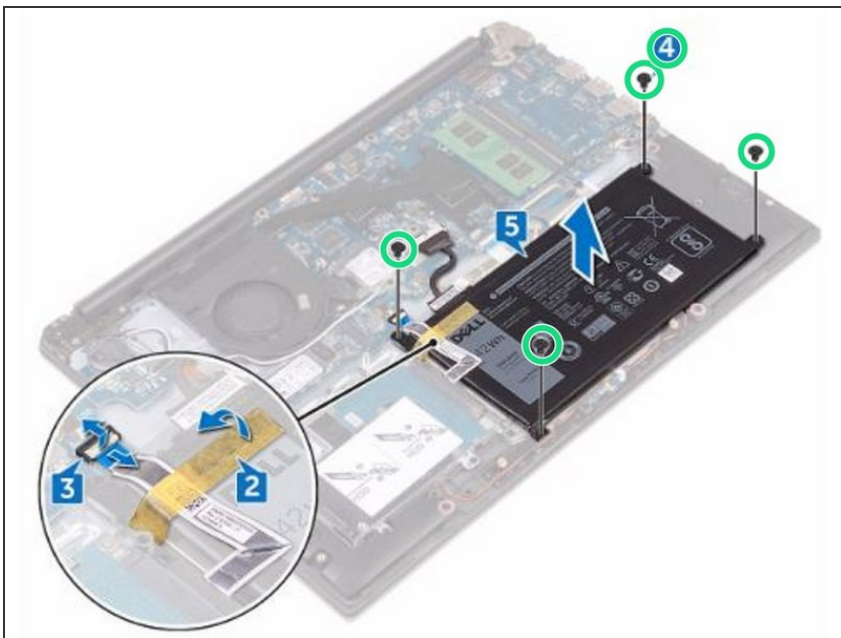
- Peel the tape that secures the hard-drive cable to the battery.

Step 3 — Open the Latch



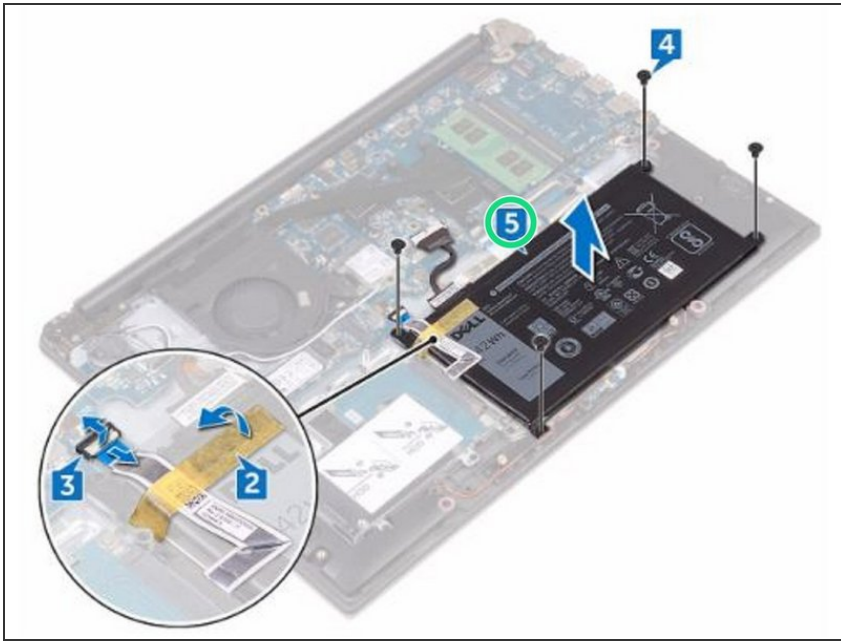
- Open the latch and disconnect the hard-drive cable from the system board.

Step 4 — Remove the Screws



- Remove the four screws (M2x3) that secure the battery to the palm rest and keyboard assembly.

Step 5 — Lifting the Battery



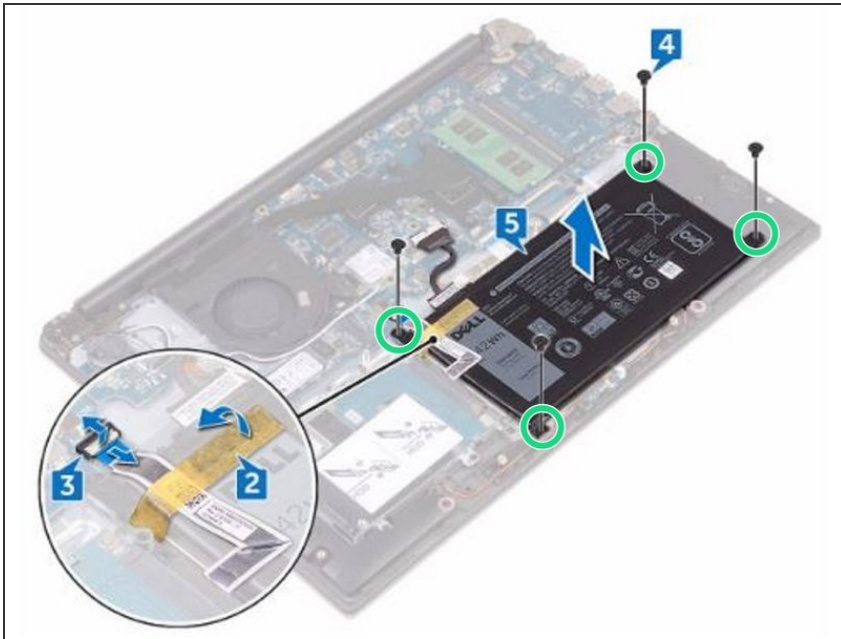
- Lift the battery off the palm rest and keyboard assembly.

Step 6 — Grounding the System Board



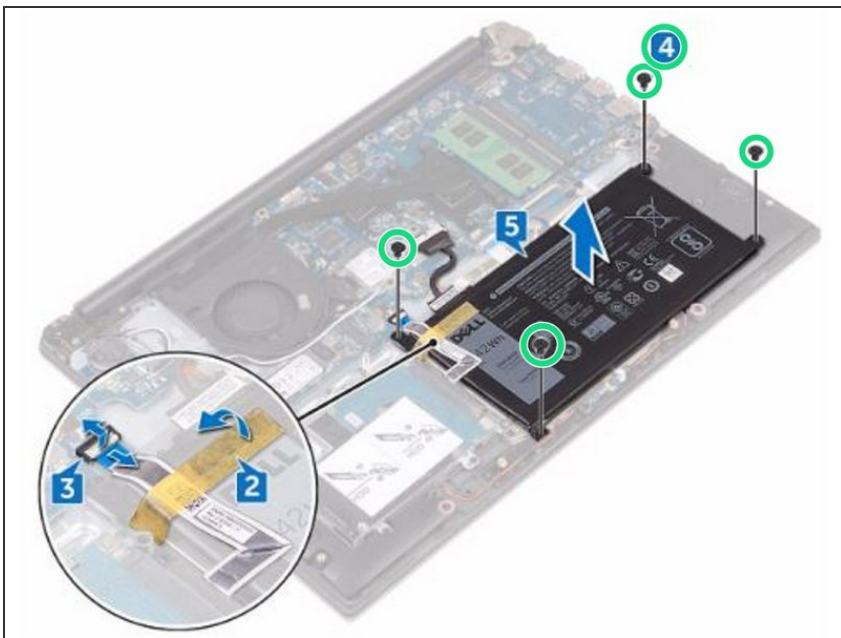
- Press and hold the power button for five seconds to ground the system board.

Step 7 — Align the Screw Holes



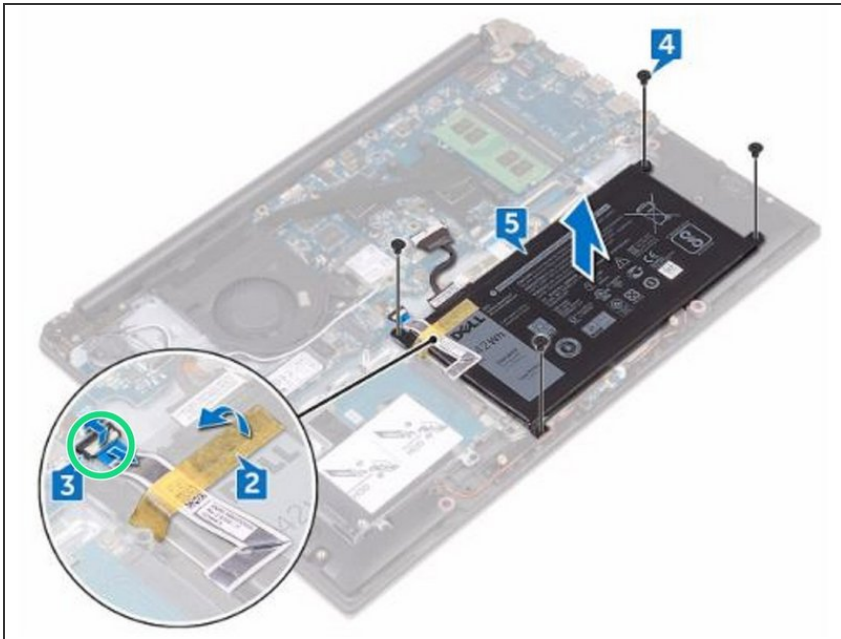
- Align the screw holes on the **NEW** battery with the screw holes on the palm rest and keyboard assembly.

Step 8 — Replace the Screws



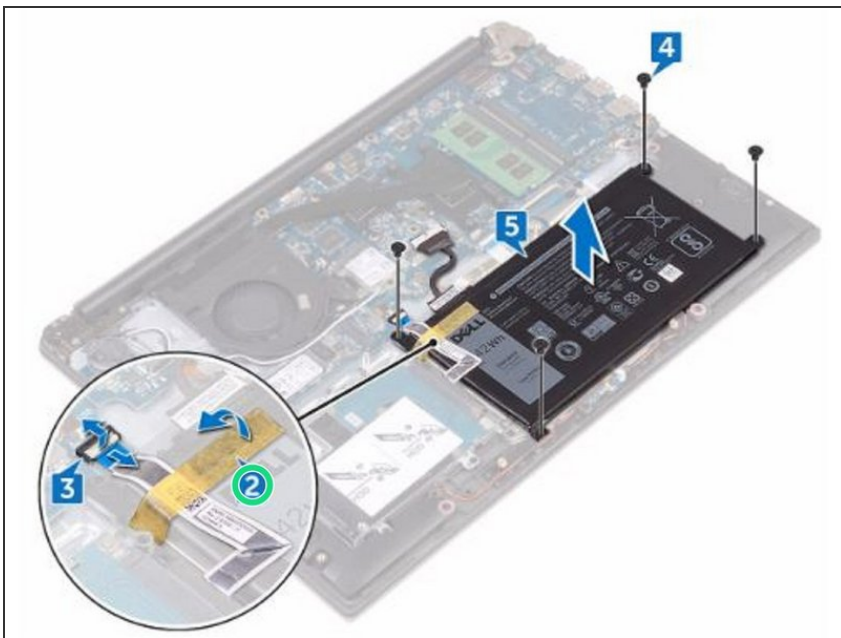
- Replace the four screws (M2x3) that secure the battery to the palm rest and keyboard assembly.

Step 9 — Sliding the Hard Drive Cable



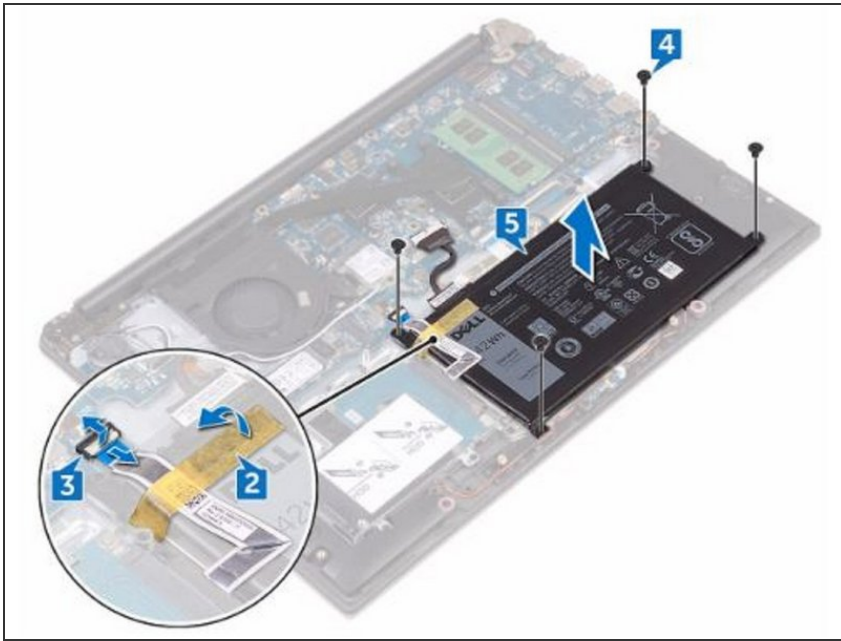
- Slide the hard-drive cable into the connector on the system board and close the latch to secure the cable.

Step 10 — Adhering the Tape



- Adhere the tape that secures the hard-drive cable to the battery.

Step 11 — Connect the Battery Cable



- Connect the battery cable to the system board.