



# Dell Inspiron 15 5576 Gaming Display Assembly Replacement

Written By: Terrence15

## INTRODUCTION

In this guide, we will be showing you how to remove and replace the Display Assembly.



### TOOLS:

- [Phillips #0 Screwdriver](#) (1)

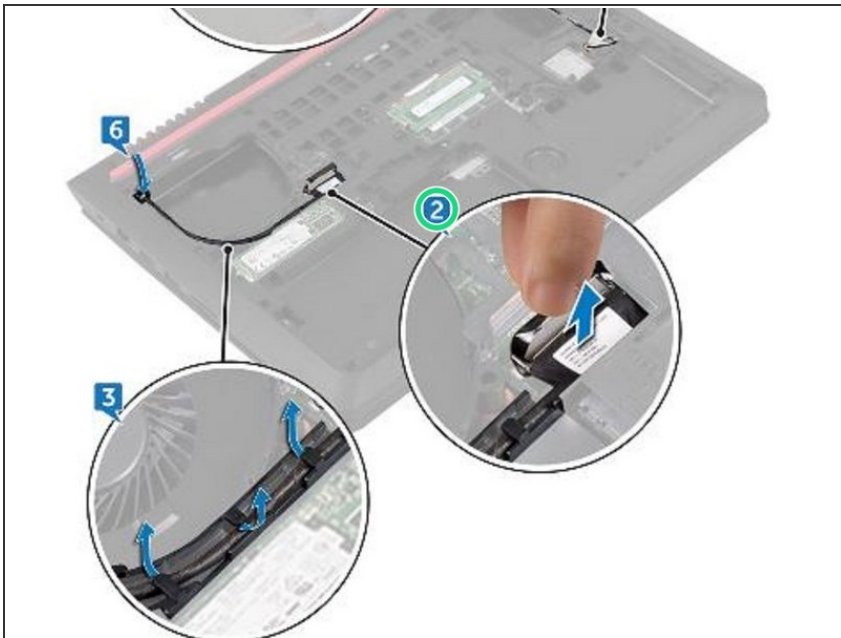
## Step 1 — Align the Screw Holes



**⚠ WARNING:** Before working inside your computer, read the safety information that shipped with your computer and follow the steps in [Before Working Inside Your Computer](#). After working inside your computer, follow the instructions in [After Working Inside Your Computer](#).

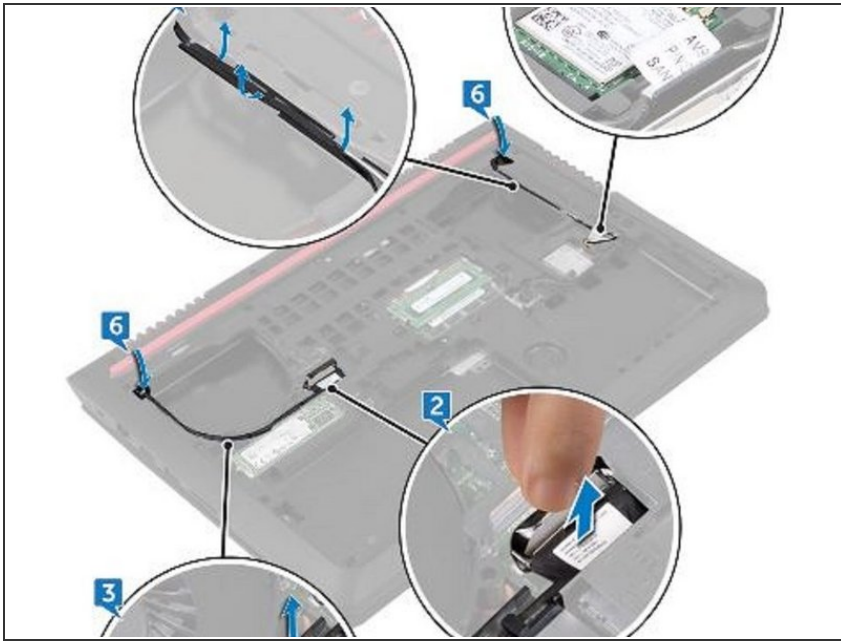
- Close the display and turn the computer over.

## Step 2 — Disconnecting the Display Cable



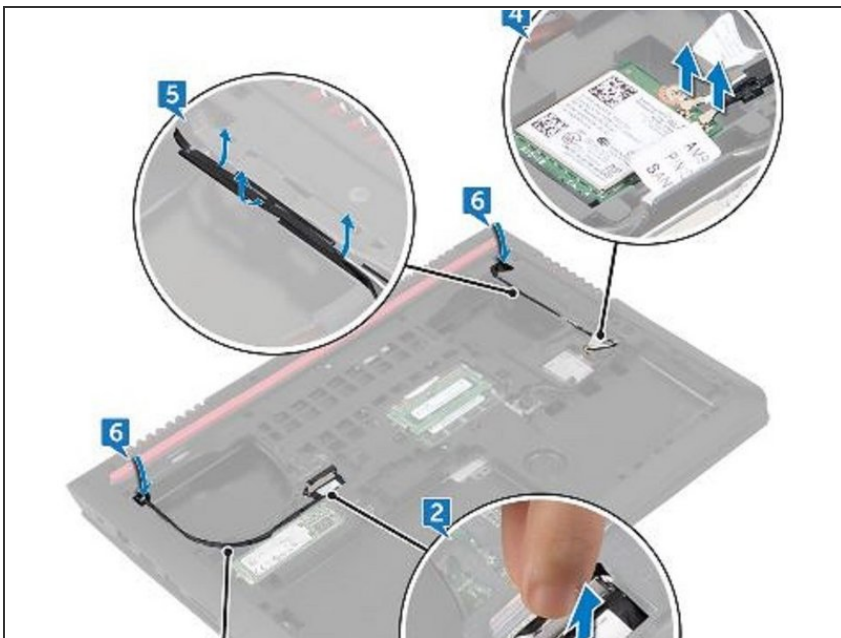
- Using the pull tab, disconnect the display cable from the system board.

### Step 3 — Note the Display Cable



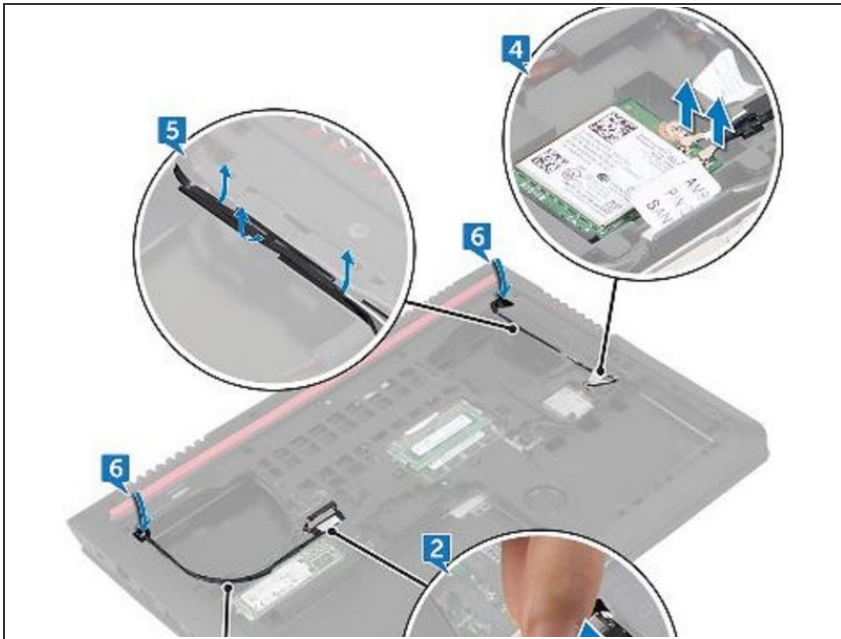
- Note the display-cable routing and remove the cable from the routing guides on the computer base.

### Step 4 — Disconnecting the Antenna Cables



- Disconnect the antenna cables from the wireless card.

## Step 5 — Note the Antenna Cable Routing



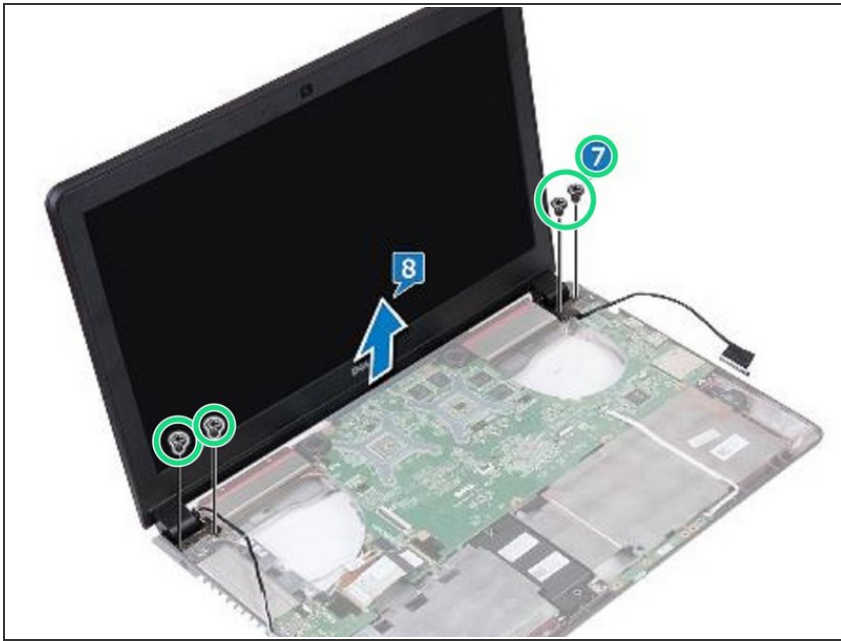
- Note the antenna-cable routing and remove the antenna cables from the routing guides on the computer base.

## Step 6 — Sliding the Display Cable



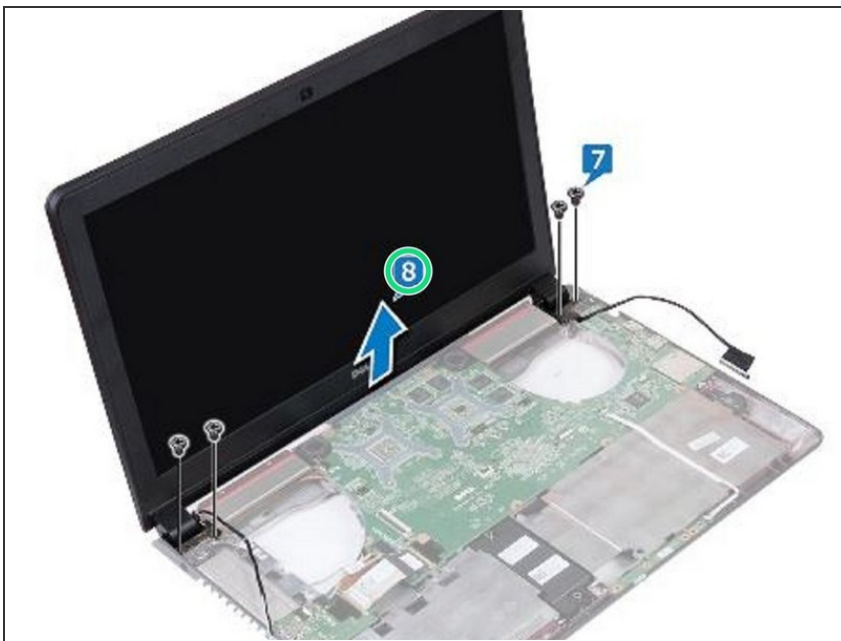
- Slide the display cable and antenna cables through the slots on the computer base.

## Step 7 — Remove the Screws



- Remove the four screws (M2x5) that secure the display assembly to the computer base.

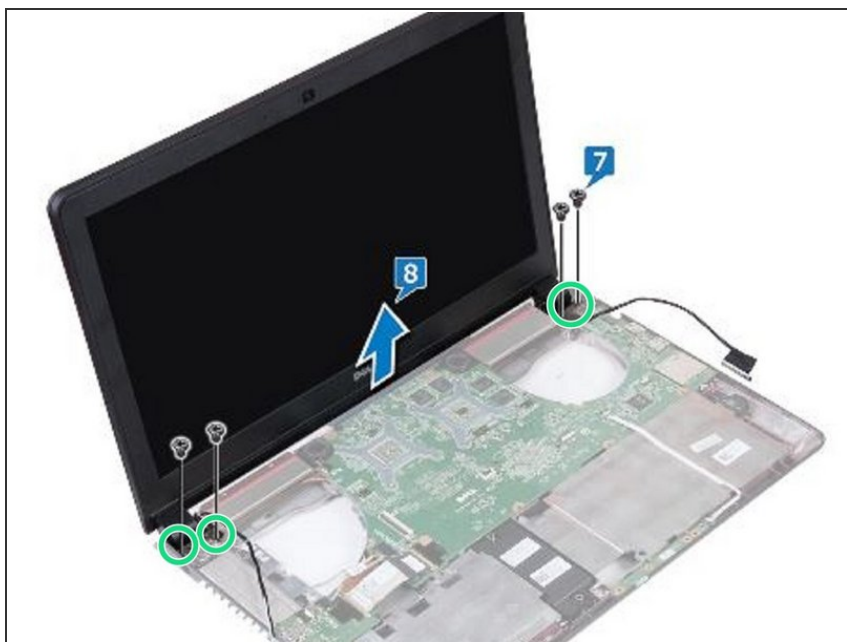
## Step 8 — Lifting the Display Assembly



- Lift the display assembly off the computer base.

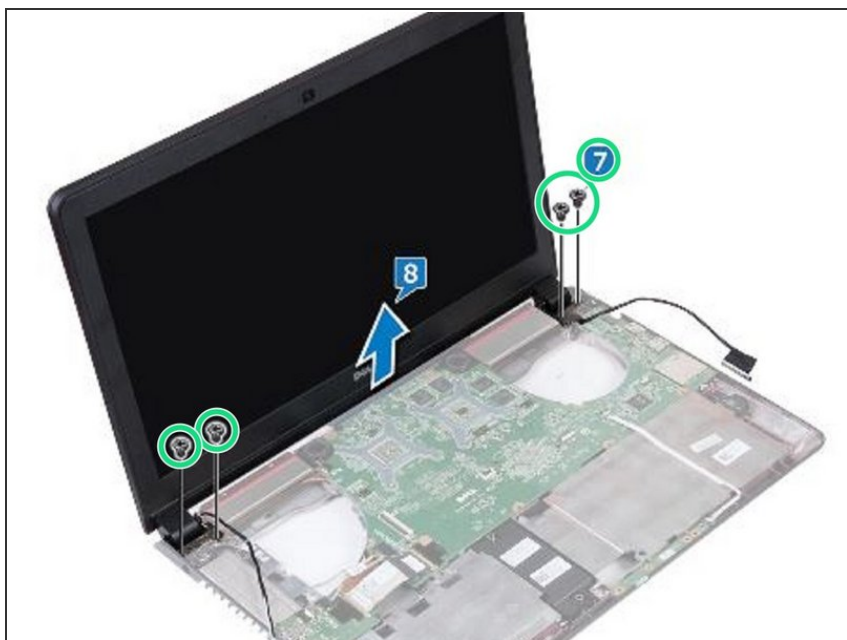


## Step 9 — Align the Screw Holes



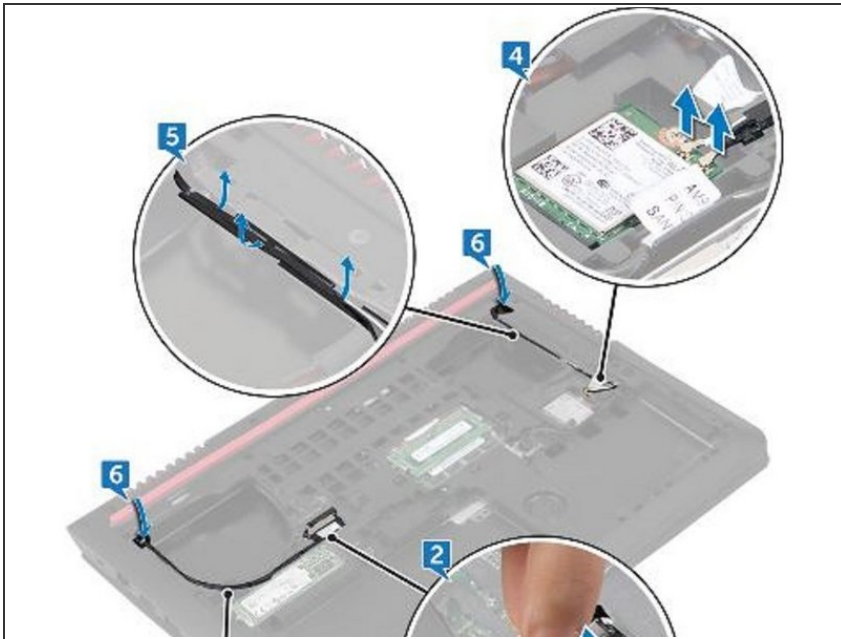
- Align the screw holes on the **NEW** display assembly with the screw holes on the computer base.

## Step 10 — Replace the Screws



- Replace the four screws (M2x5) that secure the display assembly to the computer base.

## Step 11 — Sliding the Display Cable



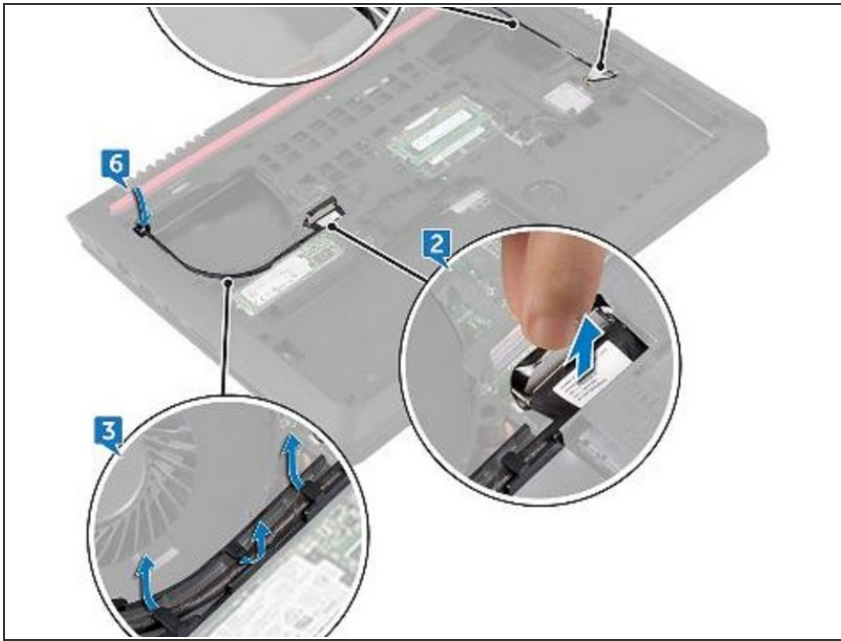
- Slide the display cable and antenna cables through the slot on the computer base.

## Step 12 — Route the Display Cable



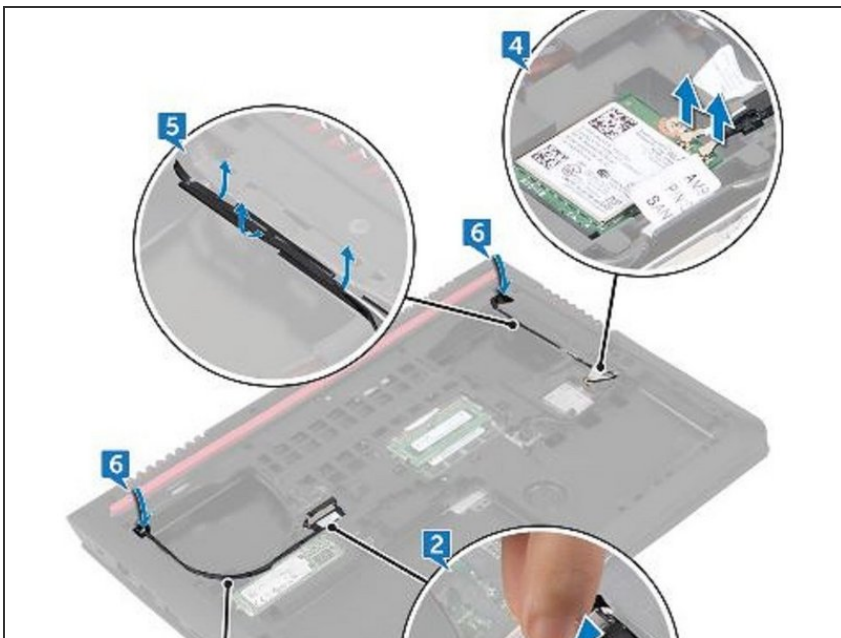
- Close the display and turn the computer over.
- Route the display cable and antenna cables through the routing guides on the computer base.

## Step 13 — Connect the Antenna Cables



- Connect the antenna cables to the wireless card.

## Step 14 — Connecting the Display Cable



- Connect the display cable to the system board.



## Step 15 — Close the Display



- Close the display and turn the computer over.