



Dell Inspiron 1521 Liquid Crystal Display (LCD) Monitor Replacement

LCD screens work by passing voltage through liquid crystals allowing different amounts of light to pass through in order to display images. Care should be taken during replacement not to damage any wires, plugs, or the LCD display itself.

Written By: Christopher McCormack



INTRODUCTION

This guide explains how to remove and replace the Liquid Crystal Display (LCD), which is also called the monitor or screen.

TOOLS:

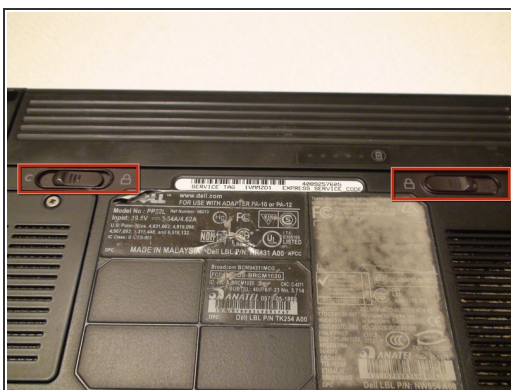
- [Phillips #1 Screwdriver](#) (1)
 - [Tweezers](#) (1)
 - [iFixit Opening Tools](#) (1)
-

Step 1 — Battery



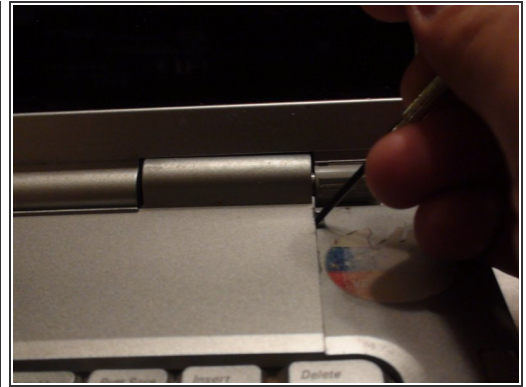
- Rotate the laptop so its bottom is facing up.

Step 2



- Identify the lock mechanisms holding the battery in place.
- Slide each button outward with your fingers to disengage the battery.
- Pull the battery off with your hand to separate it from the laptop.

Step 3 — Keyboard



- Find the two small indentations of the sides of the panel covering the power button.
- Pry up both sides of the panel by sticking the plastic opener tool in each indentation and prying up.

Step 4



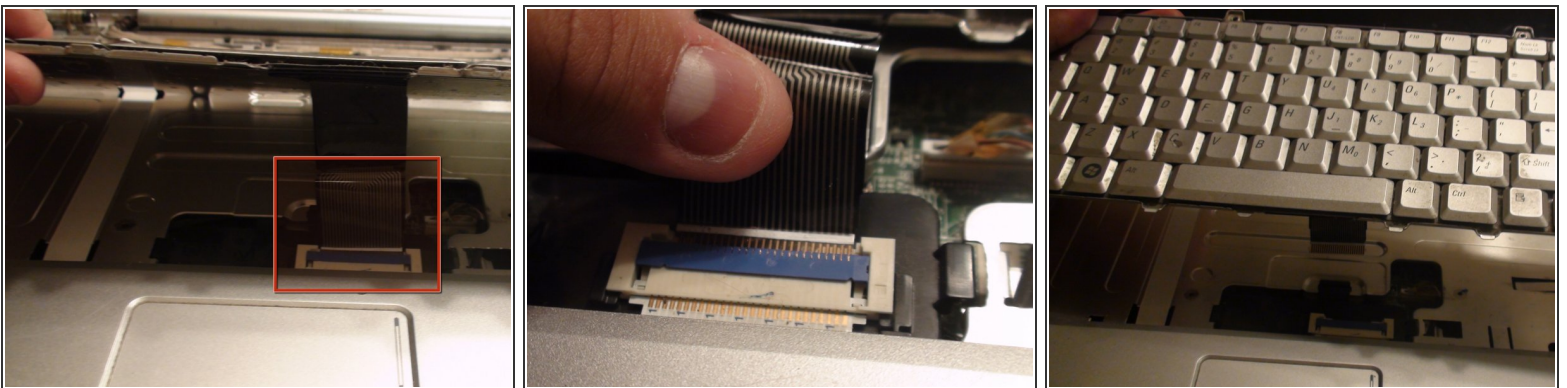
- Now that the panel is loose simply pull the panel off with your hand.

Step 5



- Locate the two 5 mm Phillips #1 screws holding down the keyboard that were underneath the panel.
- Remove these screws with a Phillips #1 screwdriver.
- With the screws removed pull the keyboard up with your hand.

Step 6



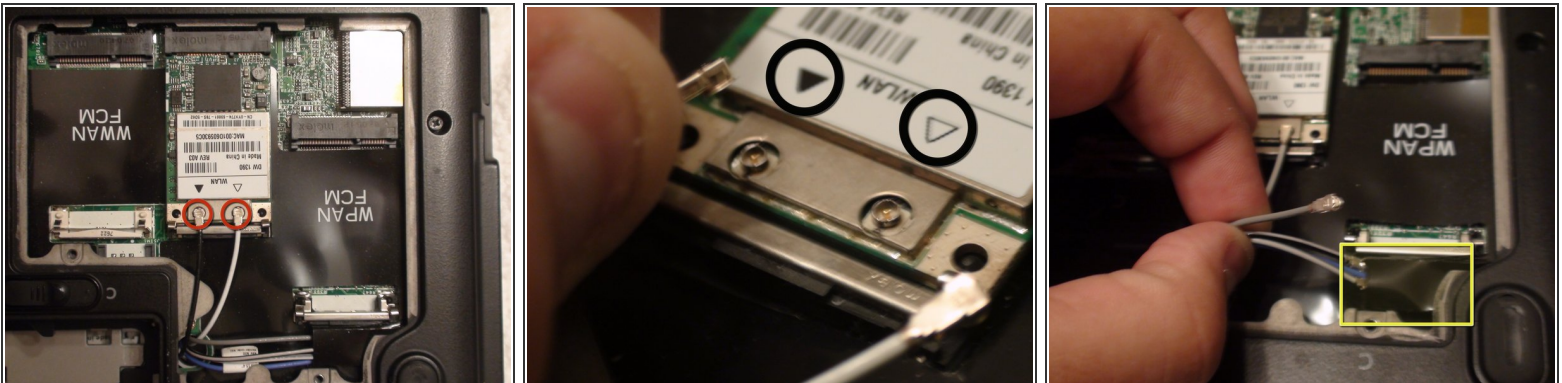
- Locate the connector that links the keyboard to the laptop.
- Gently pull the connector toward the screen of the laptop with your fingers to disconnect it.

Step 7 — Display Assembly



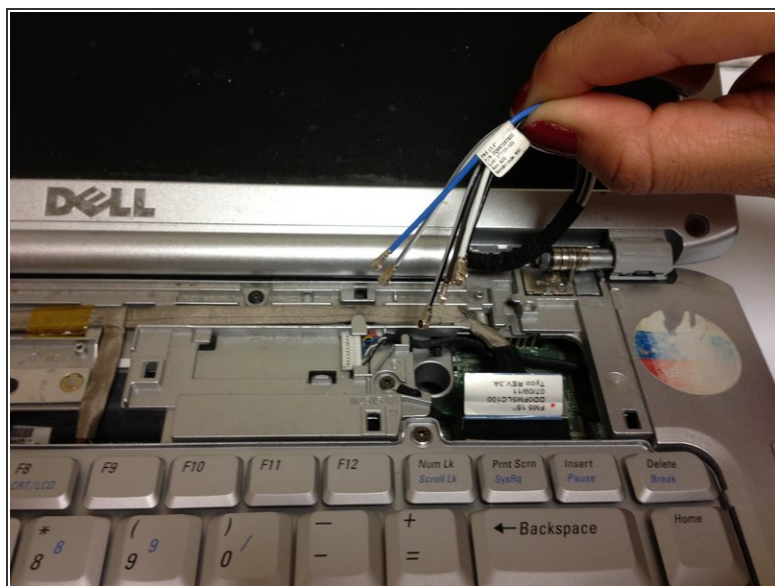
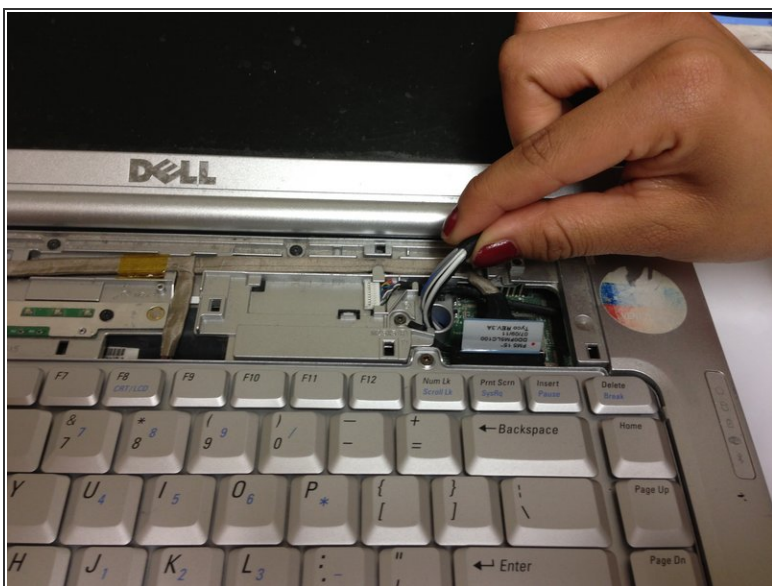
- Locate the two Phillips #1 screws holding the Wireless Local Area Network (WLAN) panel in place.
- Remove these two screws with a Phillips #1 screwdriver.
- Remove the WLAN panel by pulling it up with your hand.

Step 8



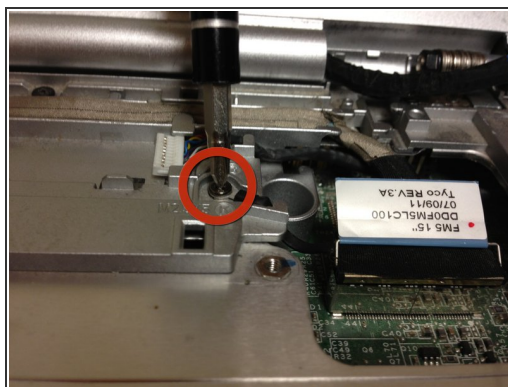
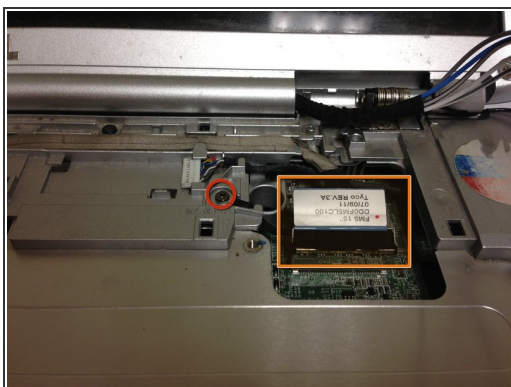
- Disconnect the black and white wires attached to the WLAN card by pulling up on the connectors with your fingers.
- ☑ During reassembly, the black and white wires reconnect to the WLAN card near the black and white triangles, respectively.
- Remove the remaining wires from their protective sleeve by hand.
- ☑ The wires in the sleeve are only used in other Dell laptop models. During reassembly they do not connect to anything so just place them back into the sleeve.

Step 9



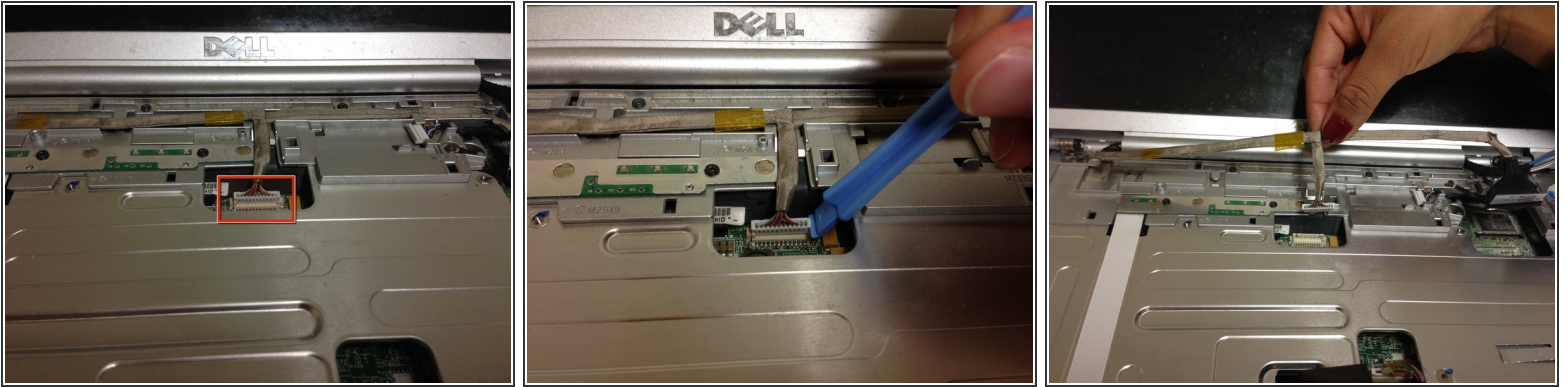
- Pull the wires that you disconnected in the previous step through the hole in the top of the laptop.


Step 10



- Detach the Phillips #1 grounding screw with a Phillips #1 screwdriver.
- Disconnect the display cable by pulling up on the rectangular tab with your fingers.

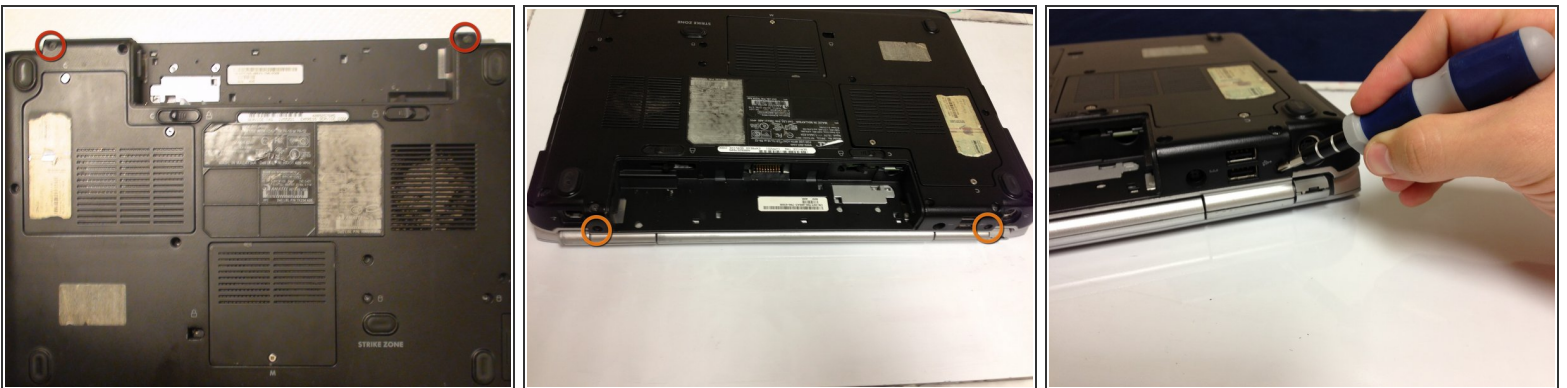
Step 11



 When disconnecting the camera/microphone cable, pull up by the white plug. Pulling on the cable itself can damage it.

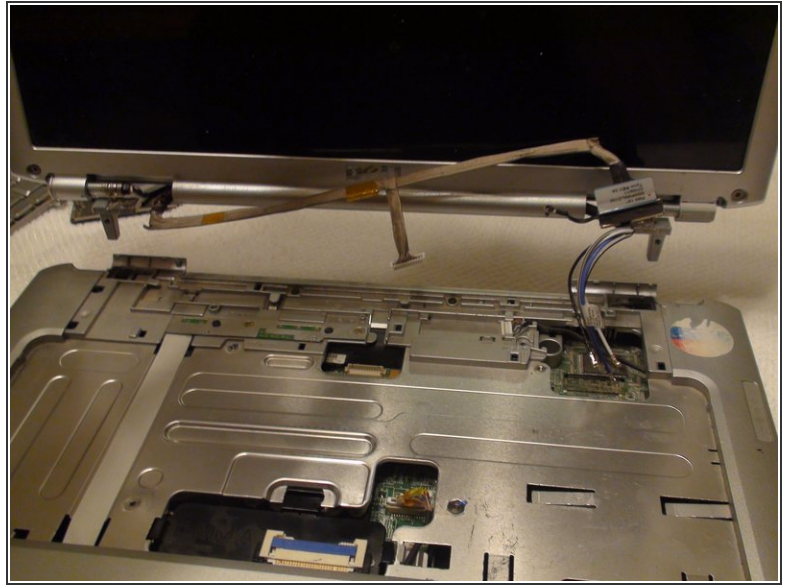
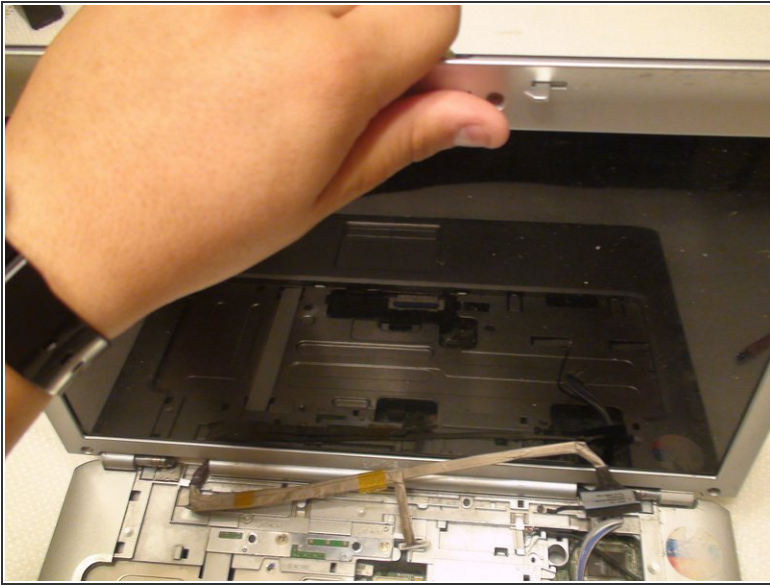
- Disconnect the camera/microphone cable by prying it upward with the plastic opener tool.
- Separate the camera/microphone cable from the case by pulling it up with your fingers.


Step 12



- Remove the two 10 mm Phillips #1 screws from the bottom of the laptop that attach the lid assembly to the laptop with a Phillips #1 screwdriver.
- Remove the two 10 mm Phillips #1 screws from the back of the laptop that also attach the lid assembly to the laptop with a Phillips #1 screwdriver.

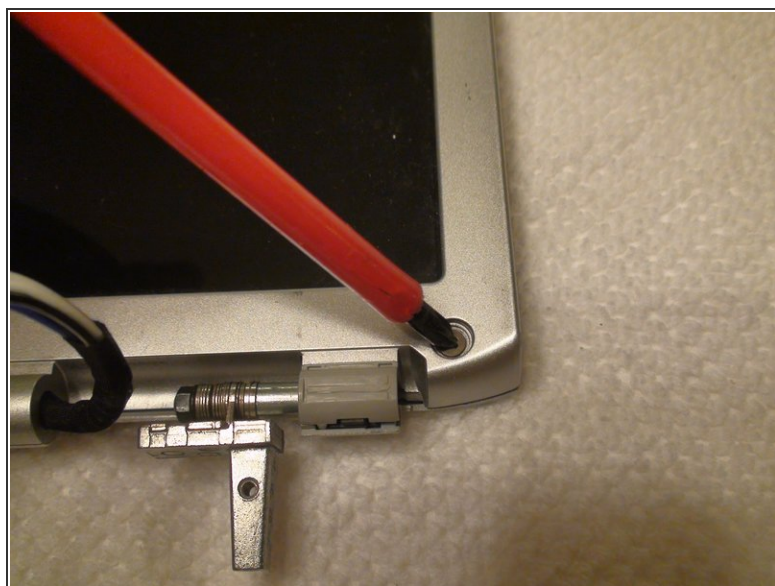
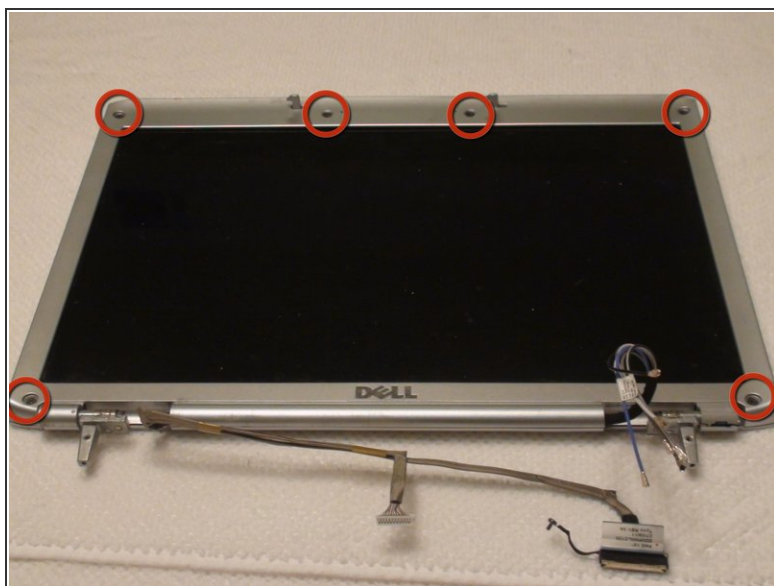
Step 13



 There is a risk of dropping the lid or base of the laptop, or damaging cables. Make sure no cables are still attached.

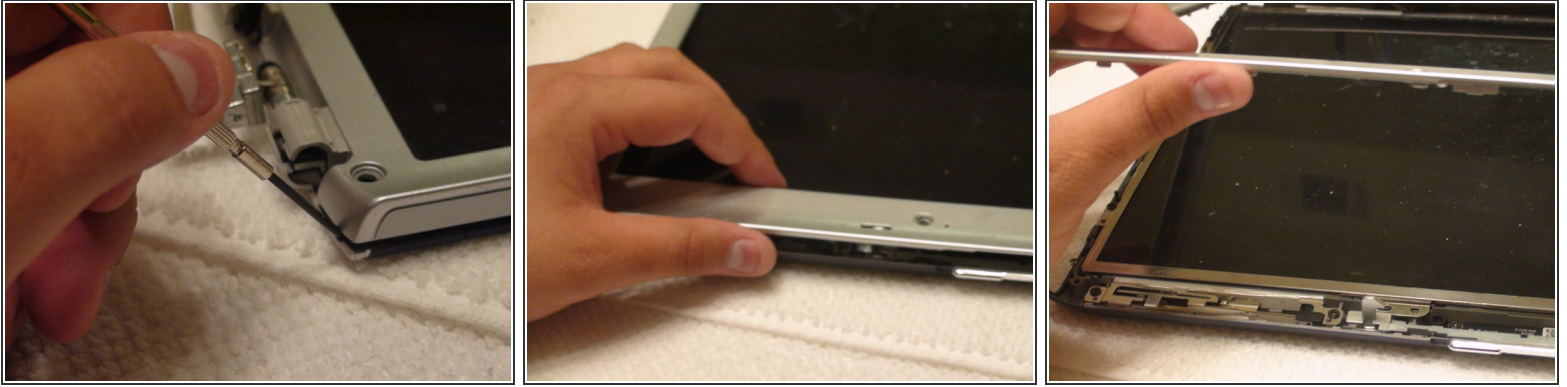
- Remove the lid by pulling it up from the base of the laptop with both hands.

Step 14 — Liquid Crystal Display (LCD) Monitor



- Locate the six 5 mm Phillips #1 screws connecting the display bezel to the back cover.
- ⓘ If there are mylar screw covers or rubber bumpers covering the screws remove them.
- Remove the six screws with a Phillips #1 screwdriver.

Step 15



 When removing the bezel be careful not to damage it. Removal should be done gently and slowly.

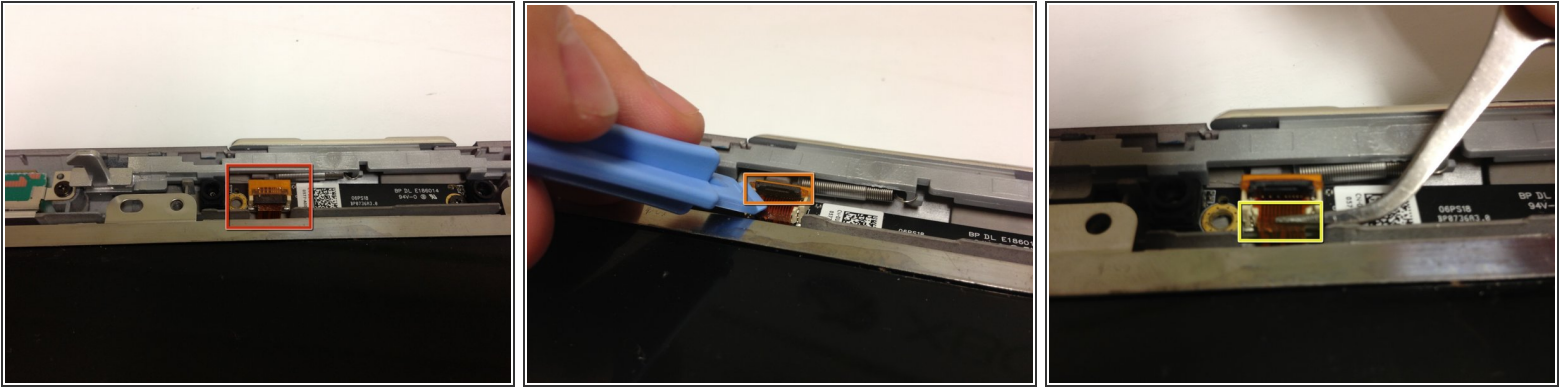
- Use a plastic opener tool to begin separating the bezel from the display assembly.
- Move around the edges of the bezel with your hand or a plastic opener tool in order to loosen it from the display assembly.
- Once the bezel is loose, remove it from the display assembly by hand.


Step 16



- Locate the eight 4 mm Phillips #1 screws (four on each side of the LCD) that secure the display to the assembly.
- Remove the eight screws with a Phillips #1 screwdriver.

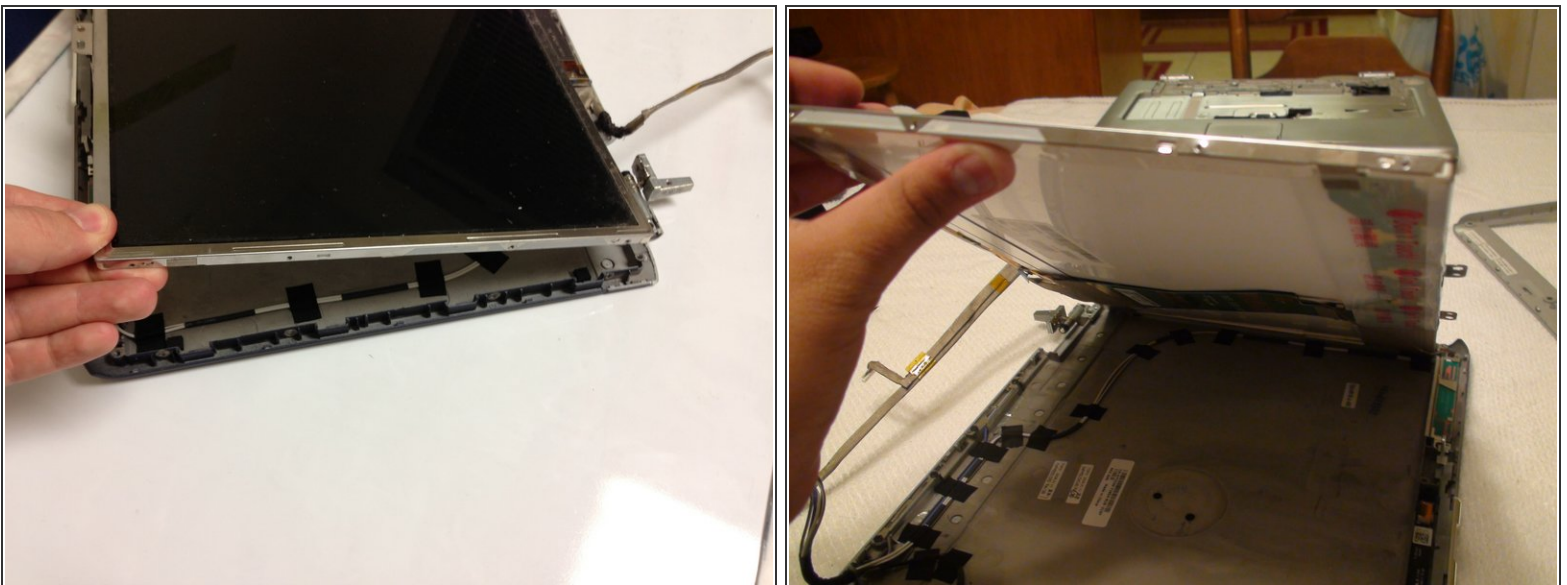
Step 17



 The LCD display can not be completely removed until the cable attached to the assembly is disconnected.

- Locate where the LCD display cable connects to the housing.
- Lift the black tab with your finger or a plastic opener tool.
- Gently pull on the cable with tweezers to disconnect it.

Step 18



- Carefully lift and remove the LCD display with both hands.

To reassemble your device, follow these instructions in reverse order.