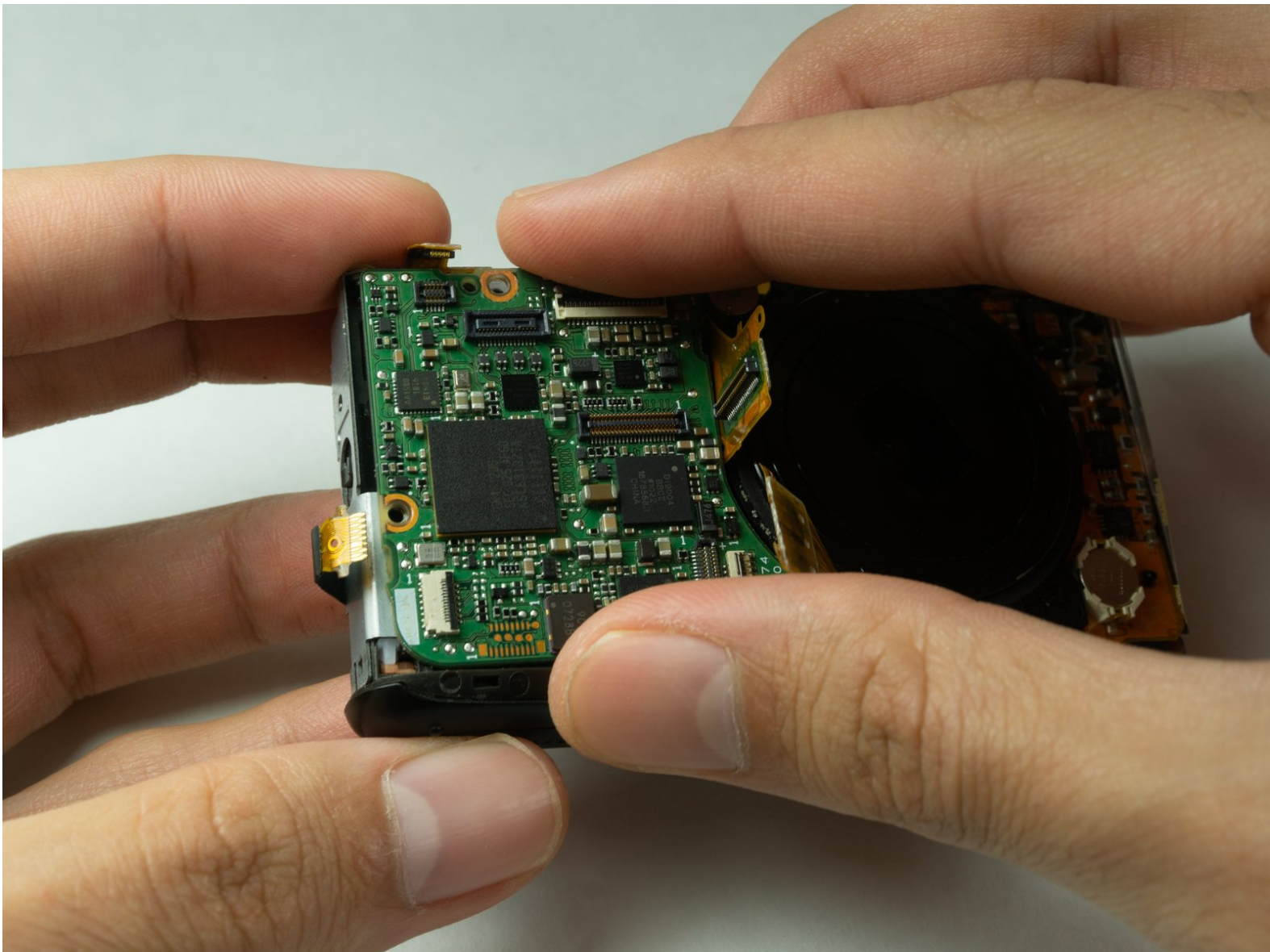




Canon PowerShot SD1400 IS Motherboard Replacement

Replace damaged motherboard of Canon PowerShot SD1400 IS by following the steps in this guide.

Written By: Faris Rezwan



INTRODUCTION

The motherboard can be damaged because of overheat and a short circuit which can cause the camera to stop working. This guide will show how to replace the motherboard in the device.



TOOLS:

- [Tweezers](#) (1)
- [iFixit Opening Tools](#) (1)
- [Phillips #00 Screwdriver](#) (1)
- [Phillips #000 Screwdriver](#) (1)



PARTS:

- [Canon PowerShot SD1400 IS Motherboard](#) (1)

Step 1 — Motherboard



- Remove two 2mm Phillips #00 screws on both sides of the camera.

Step 2



- Remove the 4mm Phillips #000 screw from the bottom.

Step 3



- Remove the front face panel of the camera.

Step 4



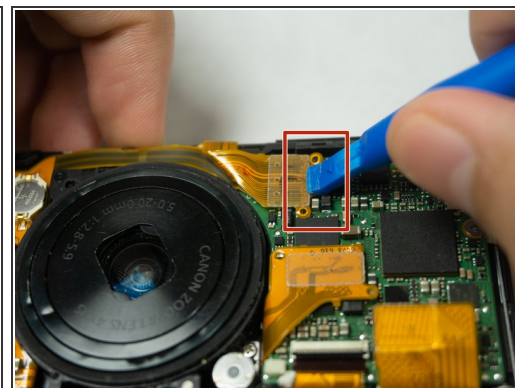
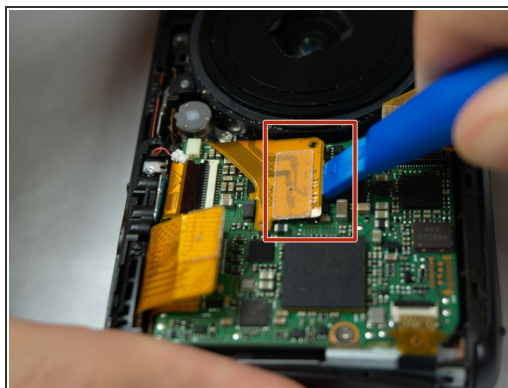
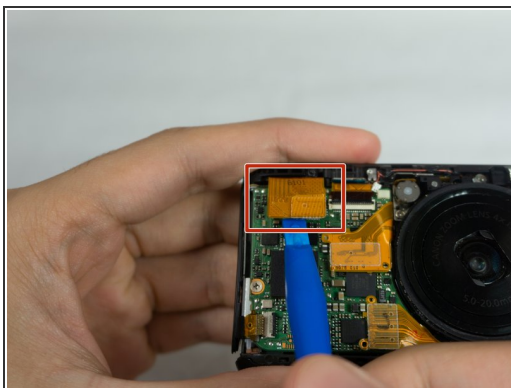
- Remove the rear panel of the camera by using hand with firm pressure.
- ⓘ The user interface panel, side and bottom panel of the camera may fall down by itself while you are taking the rear panel of the camera.

Step 5



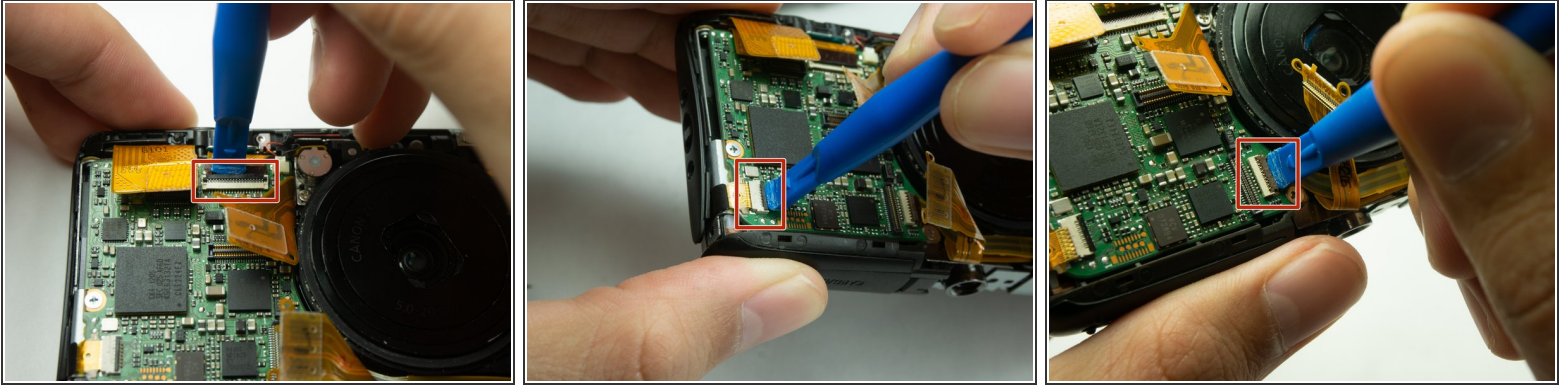
- Remove the 3mm Phillips #000 screw from the top of the camera.

Step 6



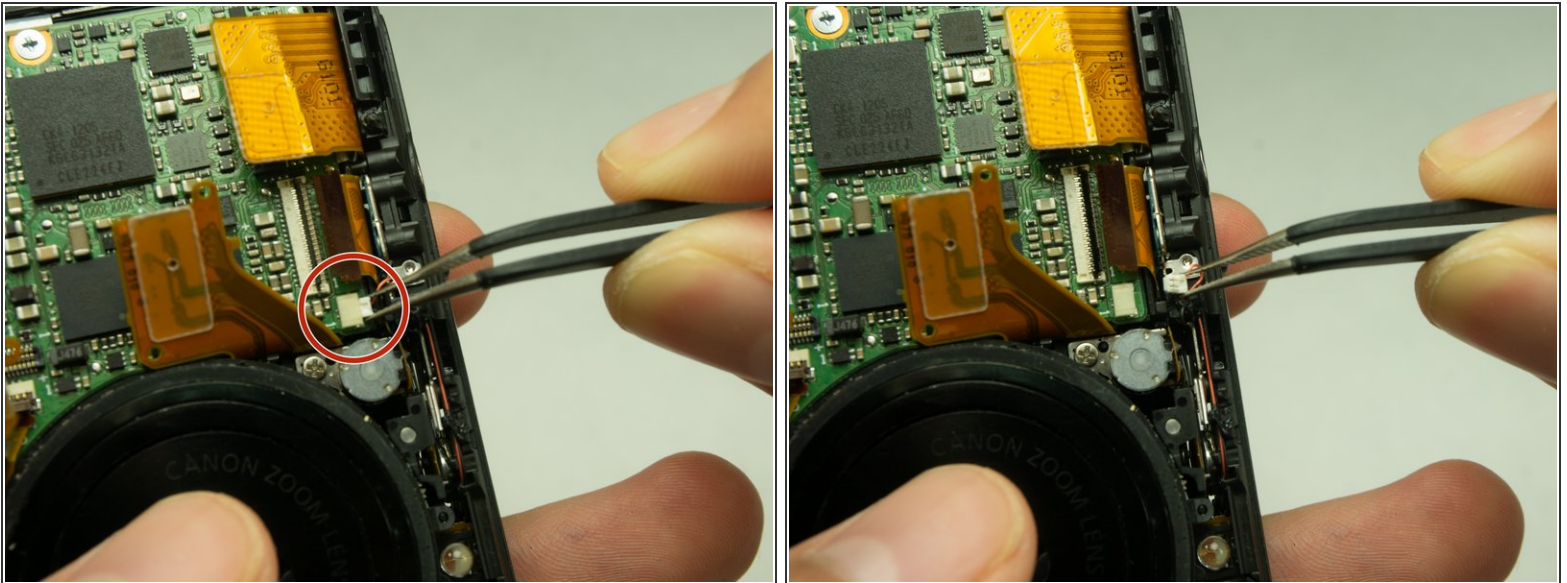
- Pry the three golden ribbons off the motherboard using a plastic opening tool.

Step 7



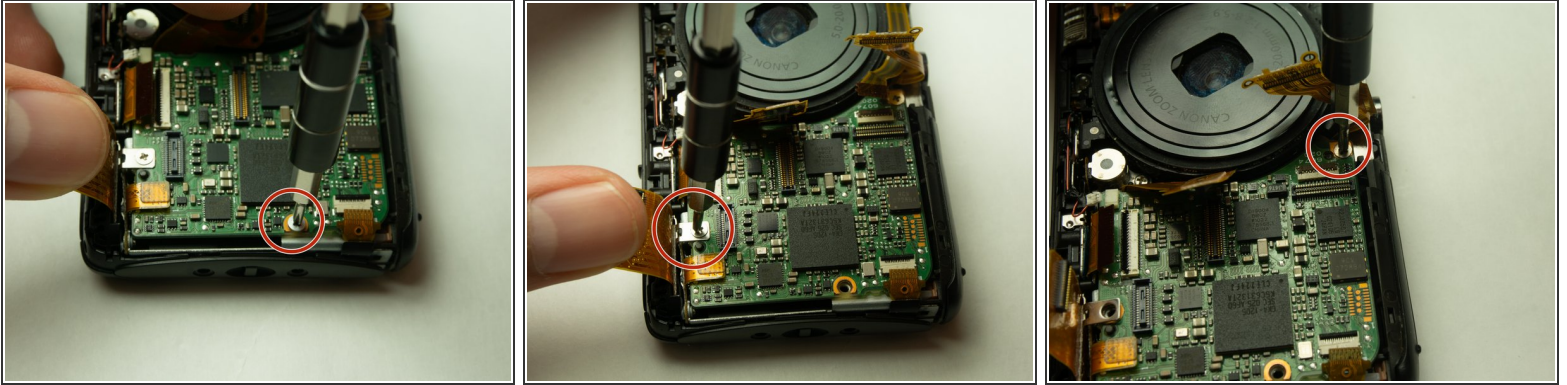
- Use a plastic opening tool to flip up the retaining flap on the ribbon cable [ZIF](#) socket.
- Once released, the small black tab will point straight away from the front face of the camera and the golden film will no longer be attached to the motherboard.

Step 8



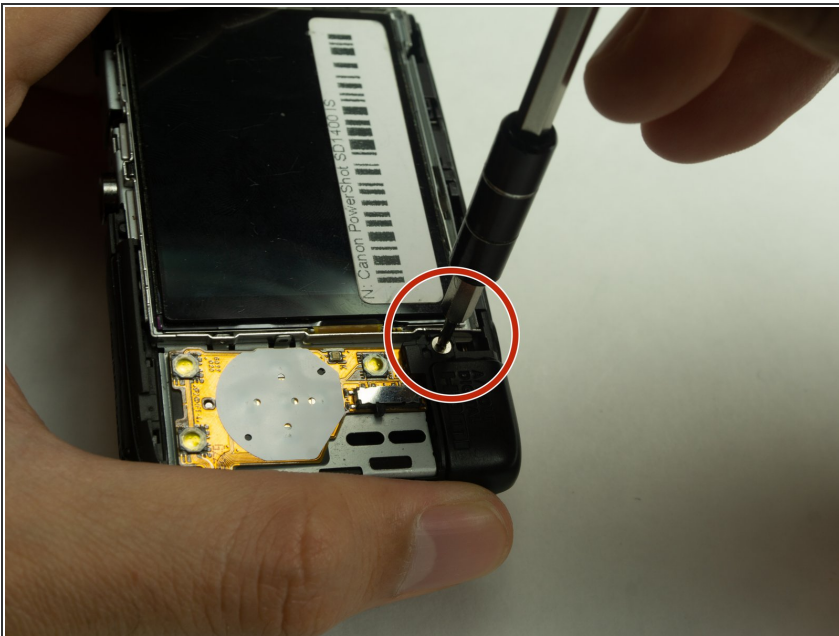
- Unplug the small chip from the face of the camera using a pair of tweezers.

Step 9



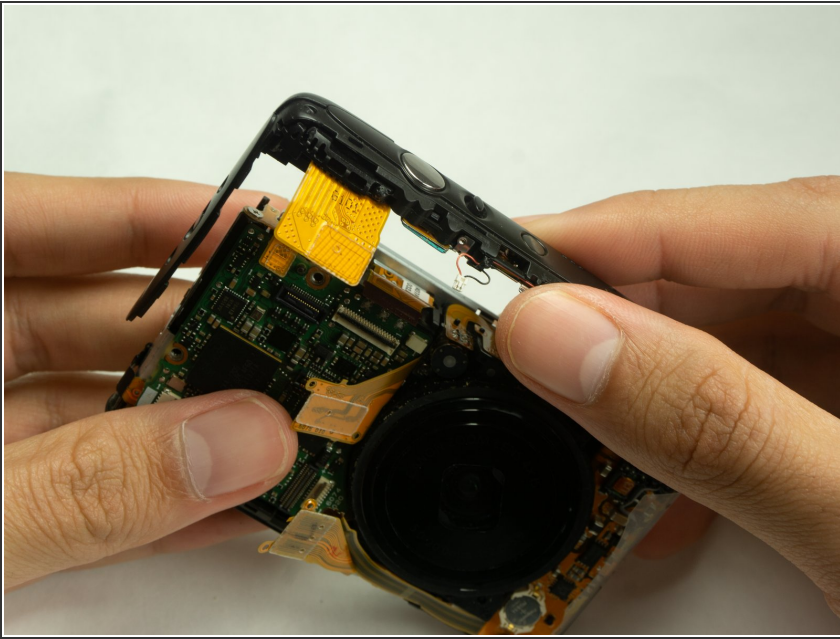
- Remove the three 3mm Phillips #000 screws from the motherboard.

Step 10



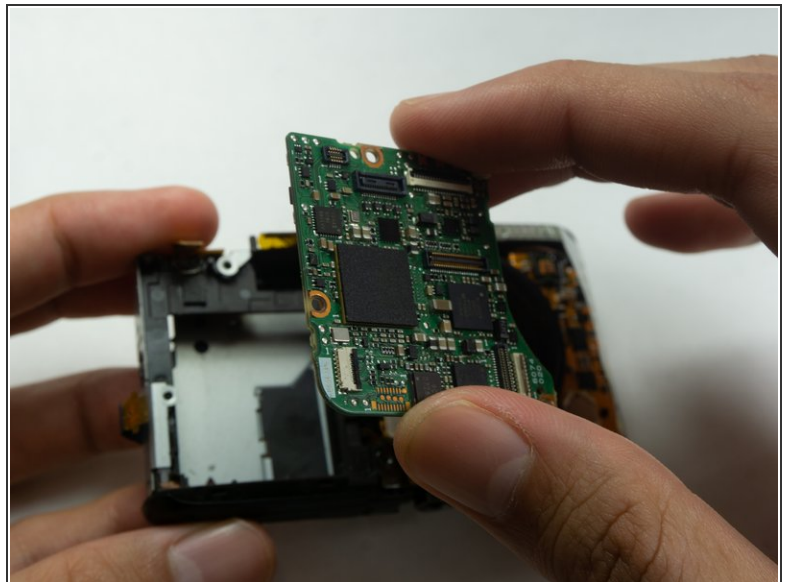
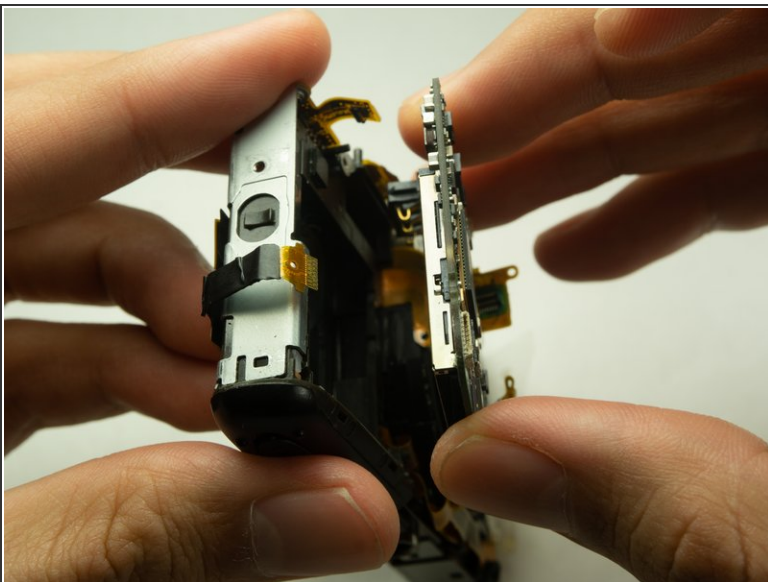
- Remove the 3mm Phillips #000 screw from the rear face of the camera.

Step 11



- Remove the top panel from the camera.

Step 12



- Remove the motherboard.

To reassemble your device, follow these instructions in reverse order.