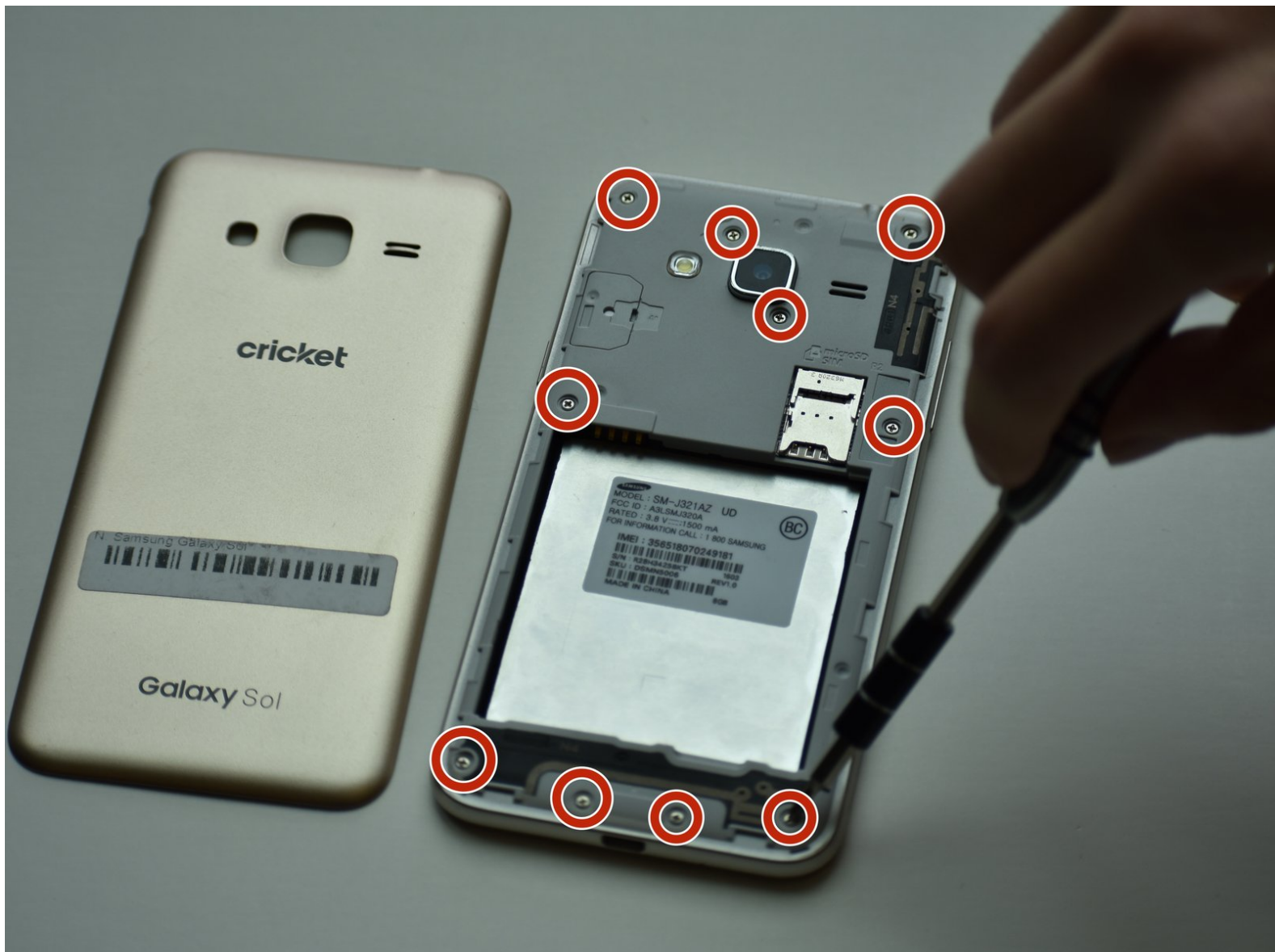




# Samsung Galaxy Sol Rear Camera Replacement

In this guide, you will learn how to replace your rear camera.

Written By: Samantha Garcia Aguilera



---

## INTRODUCTION

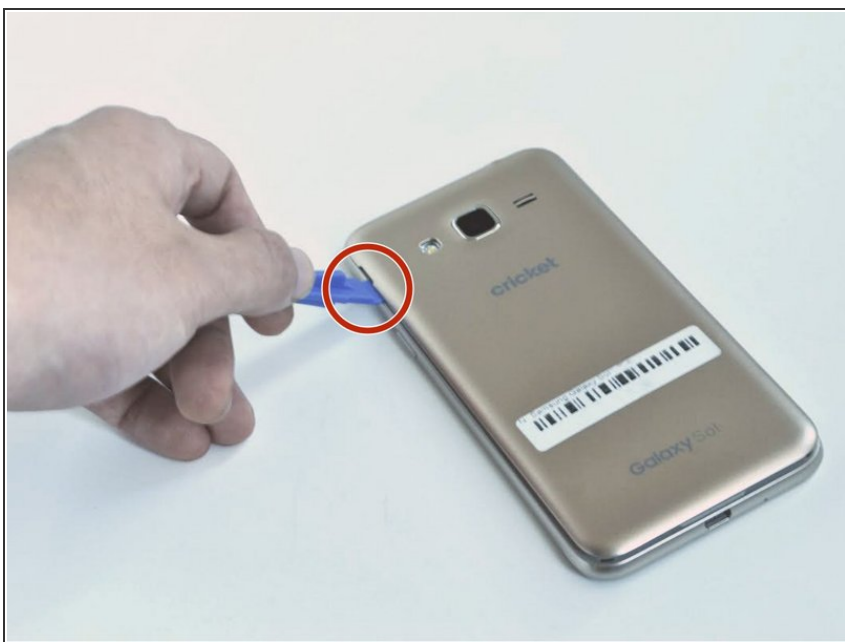
For the Cricket Samsung Galaxy Sol, the camera needed is an OEM CRICKET SAMSUNG GALAXY SOL SM-J321AZ rear camera. Some of the reasons you would need to replace the front camera are water damage or a cracked lens.



### TOOLS:

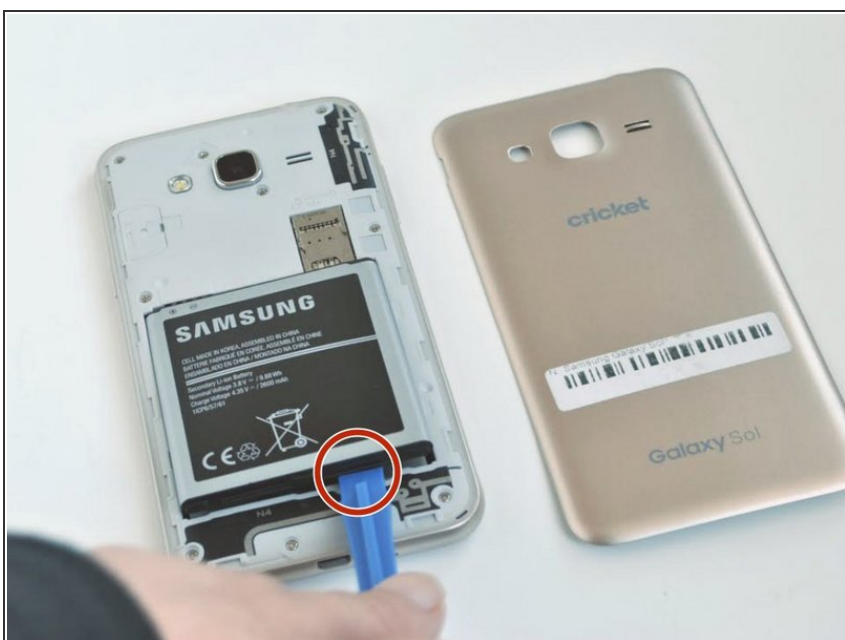
- [Tweezers](#) (1)
  - [Phillips #00 Screwdriver](#) (1)
  - [iFixit Opening Tools](#) (1)
-

## Step 1 — Battery



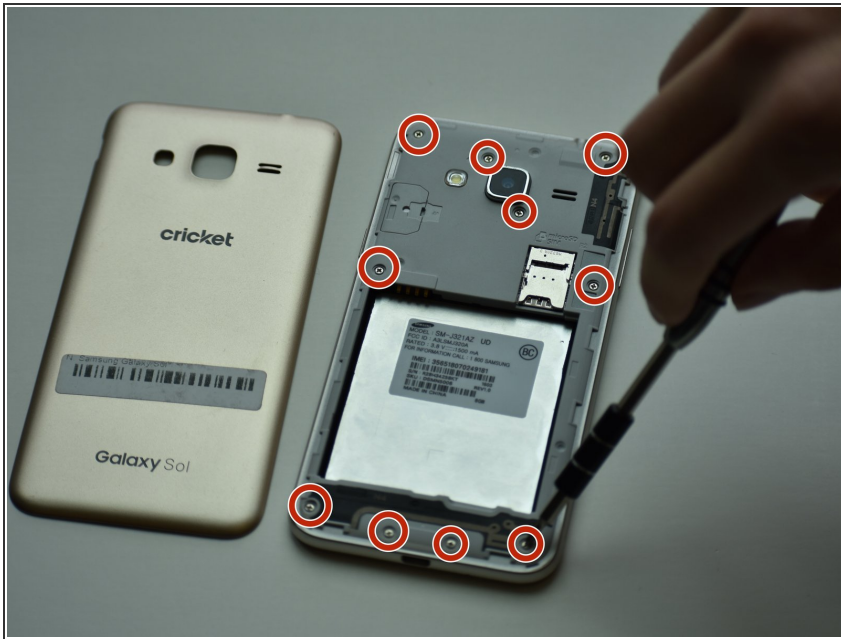
- Remove the back case of the phone by using an opening tool or fingernail to lift the divot on the top left side.

## Step 2



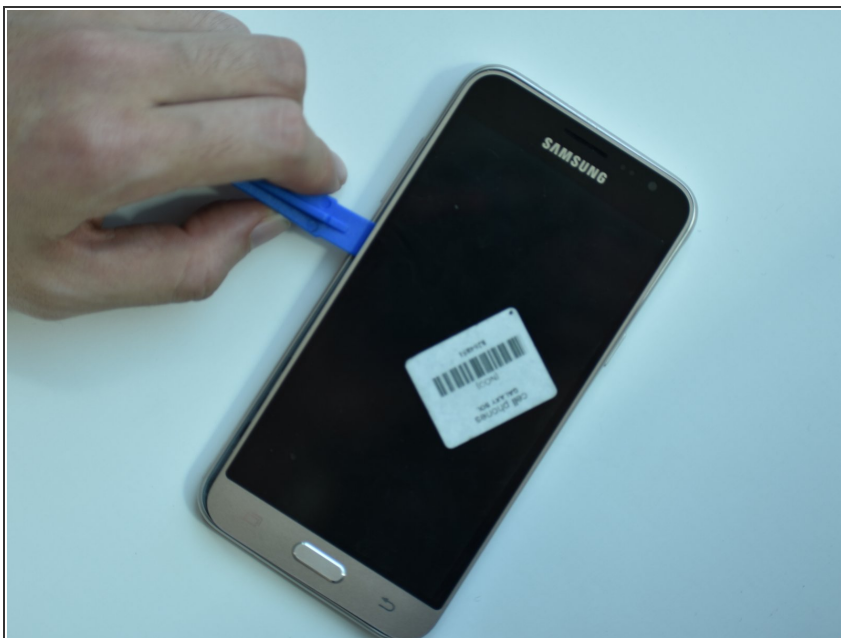
- Remove the battery by lifting from the bottom up with an opening tool or a small flat tool such as a credit card.

## Step 3 — Rear Camera



- Remove the grey back of the phone by unscrewing all ten 0.4mm screws with a Phillips #00 screw bit.

## Step 4



- After you have removed all the screws, take a credit card or plastic tool to lift the screen. You will go all around the border of the phone.



## Step 5



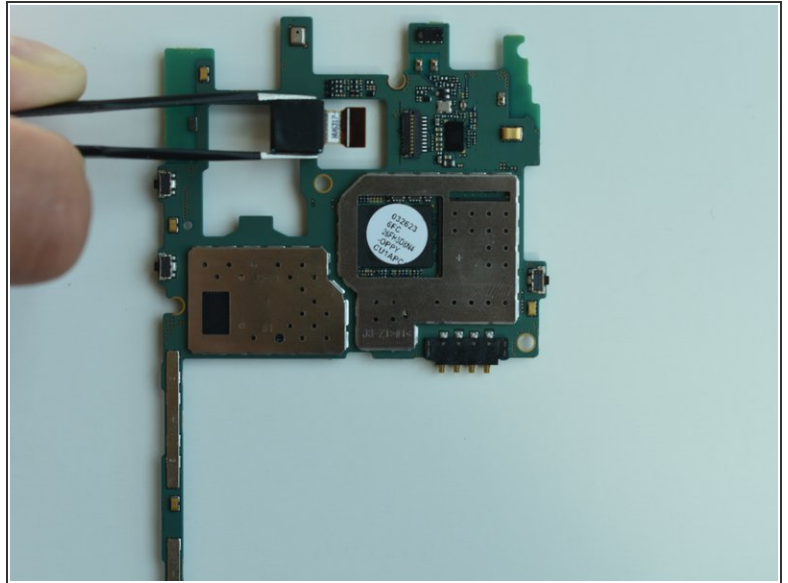
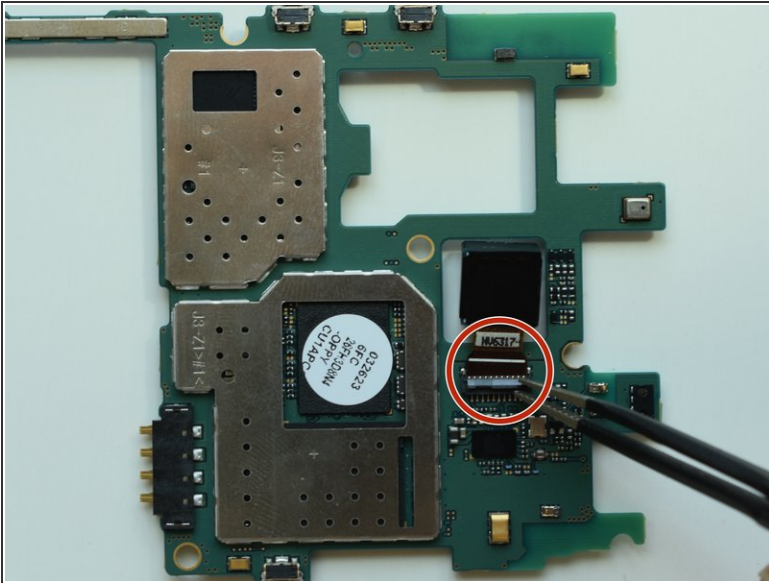
- After removing the grey part of the phone, you will need to remove the motherboard by detaching all the chips.

## Step 6



- Once you detach the chips, remove the hard drive to access the rear camera.

## Step 7



- To remove the rear camera, flip the tab upward and then pull the camera straight out.

To reassemble your device, follow these instructions in reverse order.