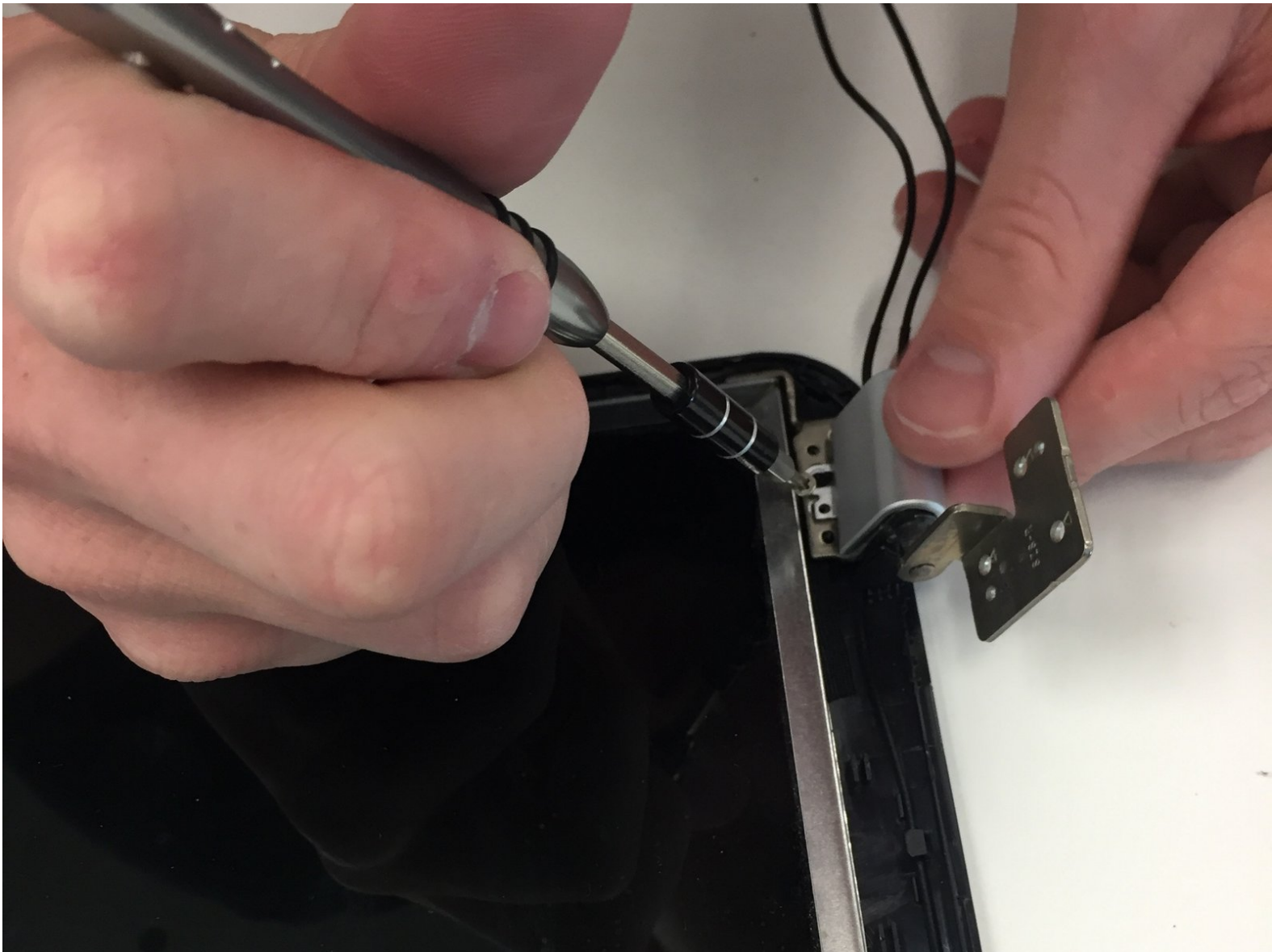




HP Pavilion G6-1d16dx Screen hinges Replacement

One or both of the hinges has snapped or broken

Written By: Calvin Kerr



INTRODUCTION

If your HP Pavilion G6-1d16dx won't close/open correctly, you could have a faulty screen hinge. This guide walks users through the process of accessing/replacing the screen hinges so that their computer will open and close correctly.

Before following this guide, check to see if there is anything external that may be inhibiting your screen from closing correctly, or if there is any sort of dust or debris buildup in the hinges of your computer; any buildup can typically be removed with an air duster.

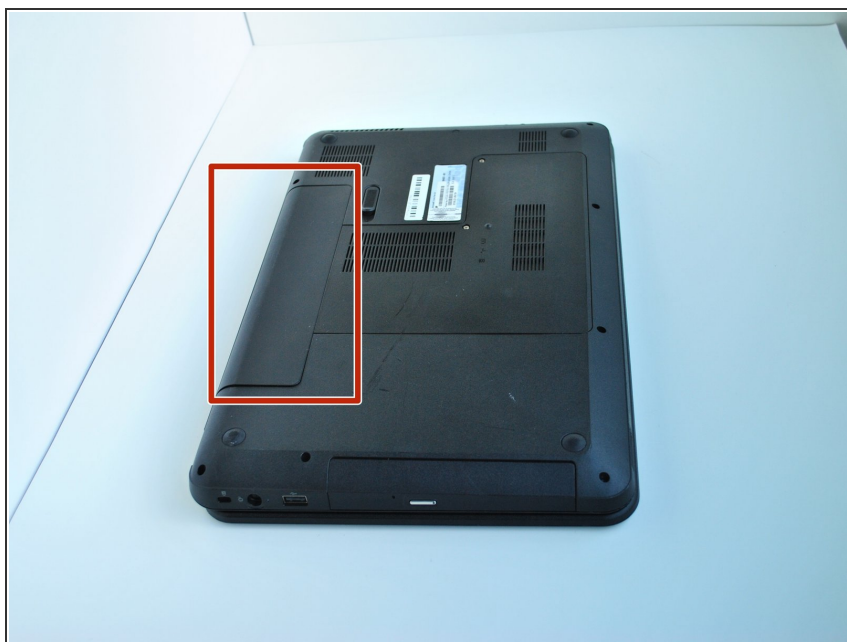
Before beginning, be sure that your computer is fully turned off and unplugged from any power source.



TOOLS:

- [Phillips #0 Screwdriver](#) (1)
 - [Slip Joint Pliers](#) (1)
-

Step 1 — Battery



- Flip the computer so that the bottom side is facing up, and locate the battery above the screen hinges.

Step 2



- Slide the switch under the battery compartment to release the battery.

Step 3



- Remove the battery.

i The battery will have popped out of the compartment when it was released.

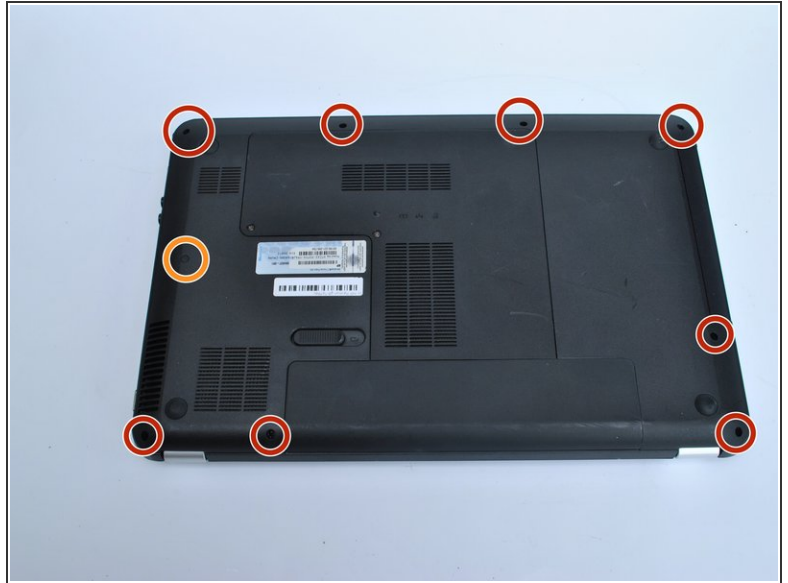
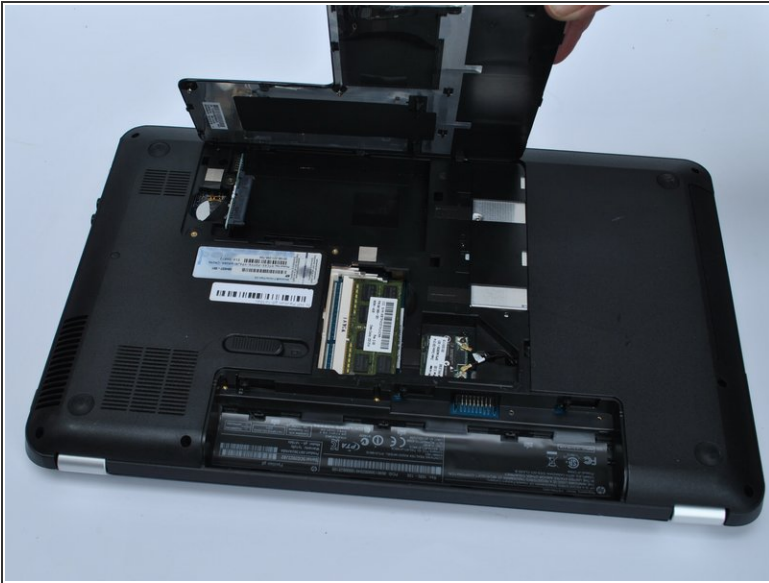
Step 4 — Motherboard



- Unscrew the two silver screws holding the protective cover in place until they make a clicking noise.

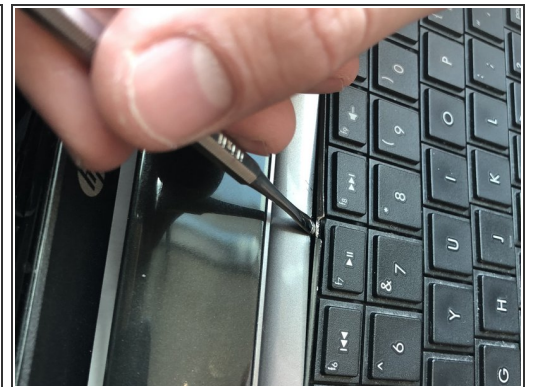
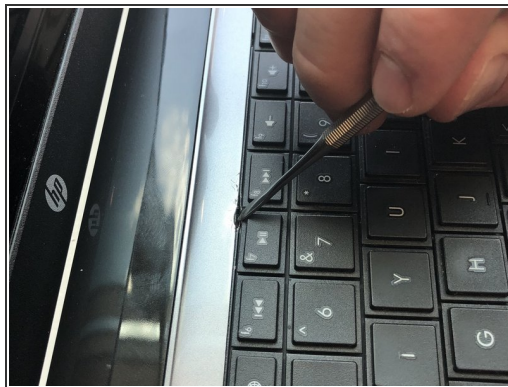
i The screws do not remove from the cover.

Step 5



- Unsnap the Cover by lifting the edge along the battery compartment.
- Remove all of the body screws.
- Remove the rubber cap and the screw underneath it.

Step 6



i The keyboard is held in by nine tabs

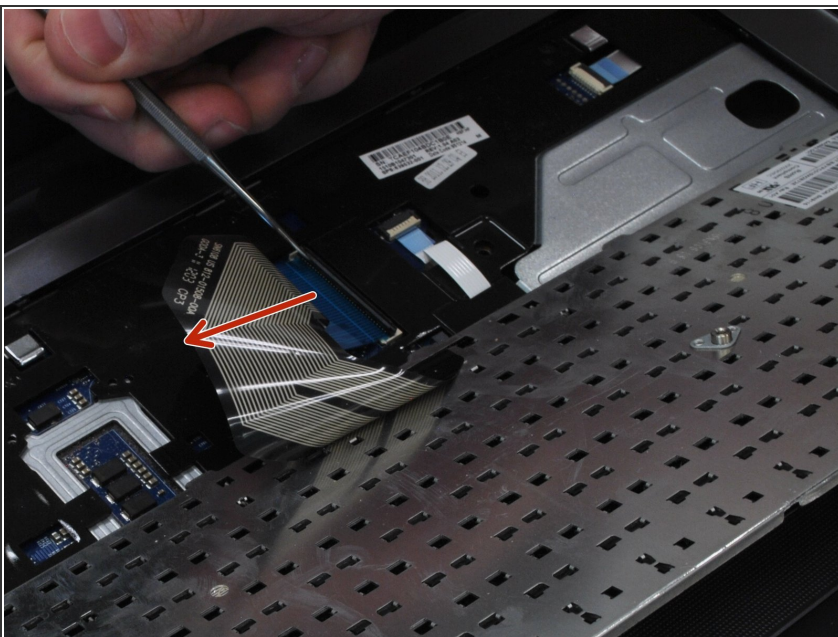
- Using a metal tool, depress the center tab and pry up the keyboard by pivoting the tool towards the screen.

Step 7



- Slide the tool that is now under the keyboard sideways along the edge and use another tool to depress the other tabs along the edge of the keyboard.
 - ⓘ As you depress the tabs, the edges of the keyboard will pop up.
- Lift off the keyboard

Step 8



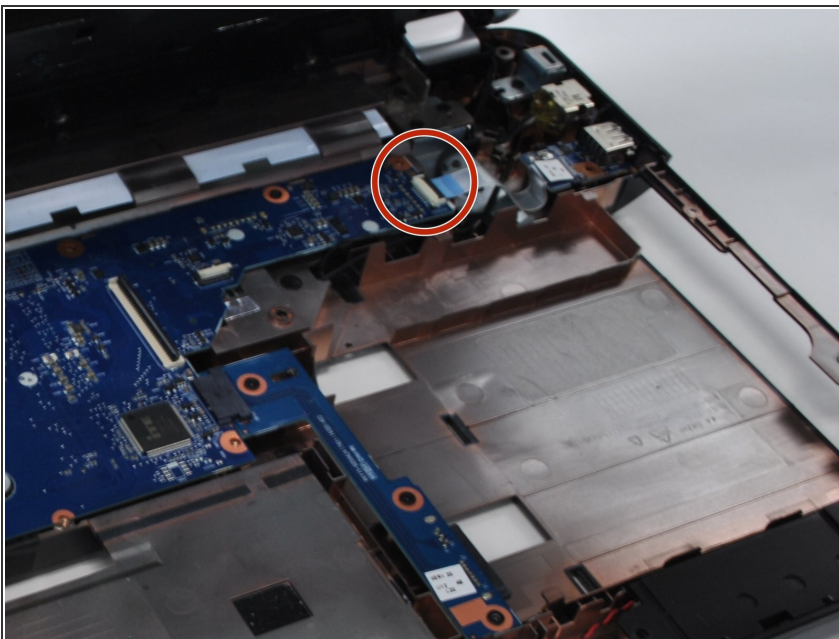
- Flip up the black tab holding the keyboard in place via the ribbon cable and pull out the cable

Step 9



- Remove the two remaining ribbon cables.
 - Remove the screws holding in the protective cover underneath the keyboard.
 - Pop the cover off using any flat metal tool, starting with where you took out the optical drive
- i** It will be very sticky near the edge closest to the screen. This is where the sticker in the battery compartment is stuck to. just use a little more force.

Step 10



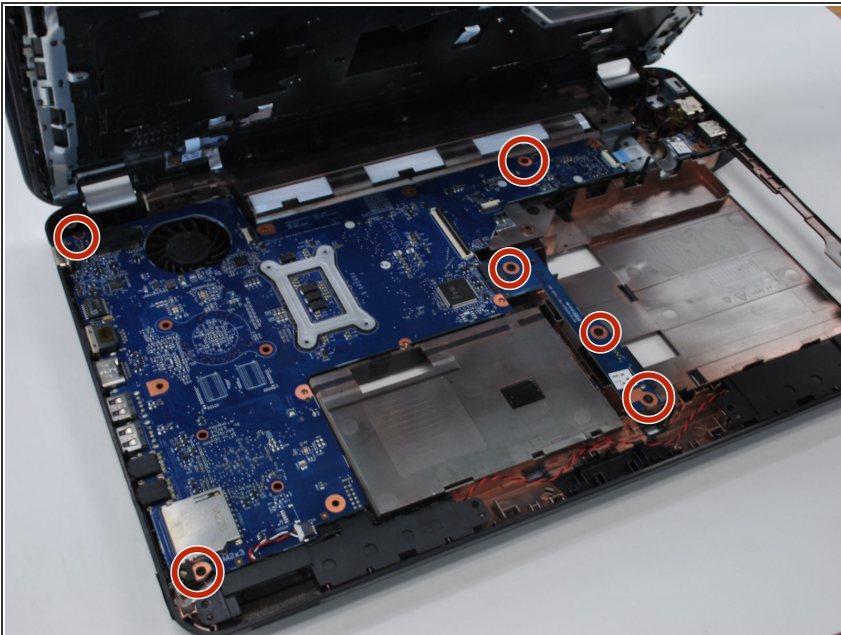
- Unplug the ribbon cable on the right side of the motherboard.

Step 11



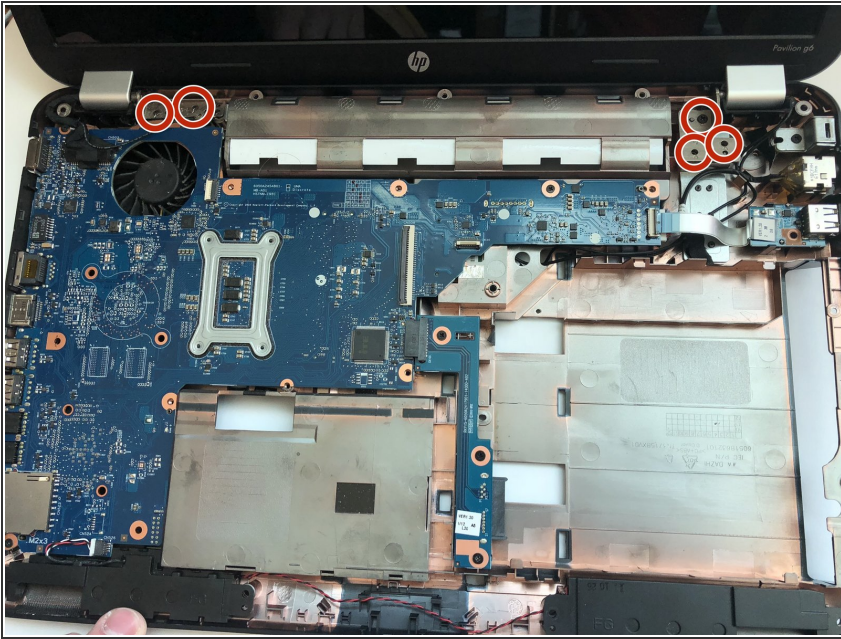
- Underneath the computer, unscrew the hard drive connector screw, and pop out the hard drive plug-in.

Step 12



- Unscrew all mother board screws and lift the motherboard out of the body.
- ☐ For replacing the screen hinges and screen, skip this step

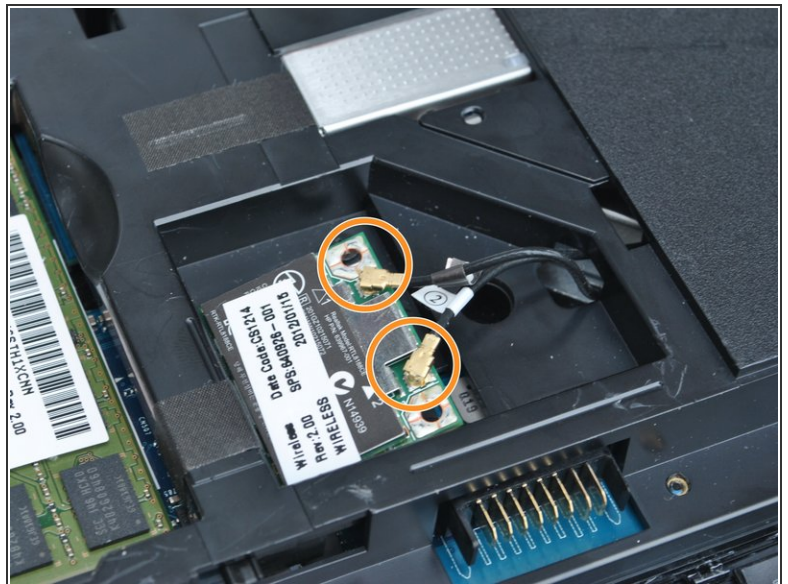
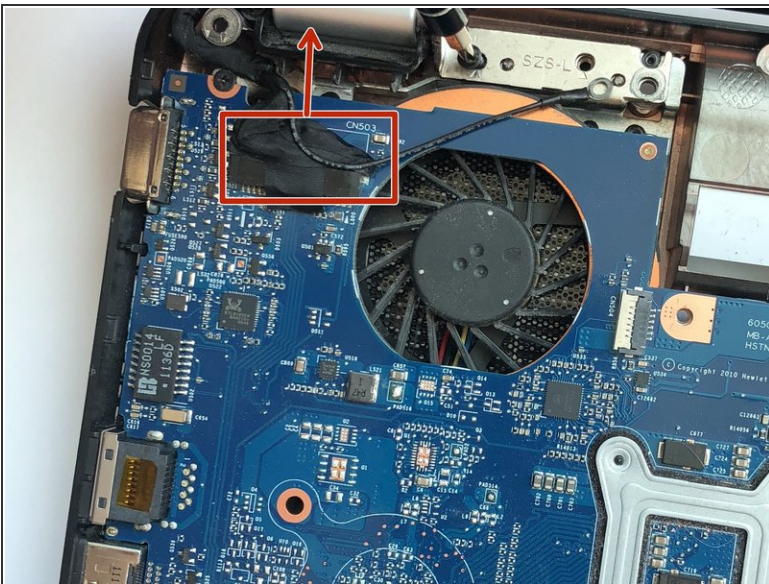
Step 13 — Screen hinges



- Remove the five screws holding hinges to base.

⚠ Do not unscrew the motherboard screws

Step 14



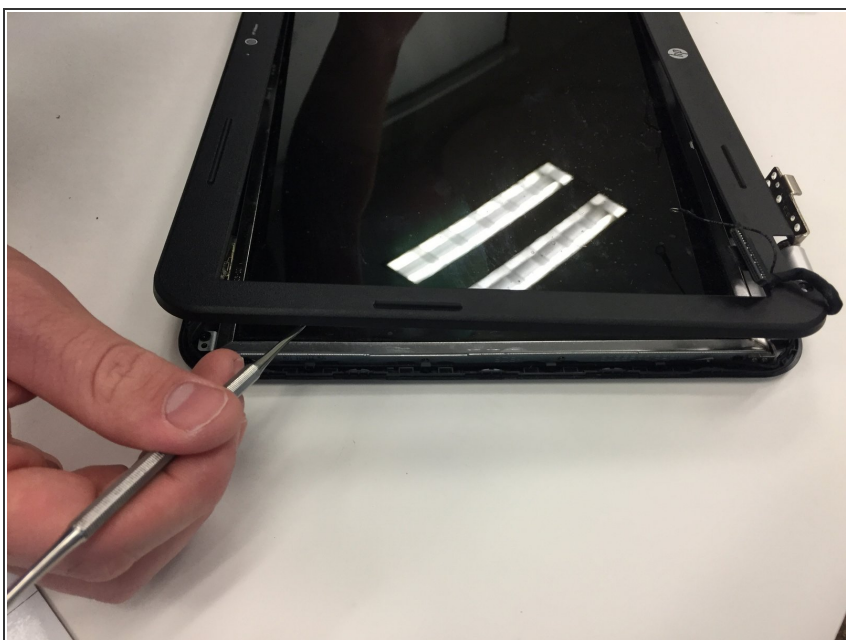
- Lift the tape tab up from the screen plug, and unplug the screen from the motherboard.
- Unplug the wires from the wireless card and pull them through the body.

Step 15



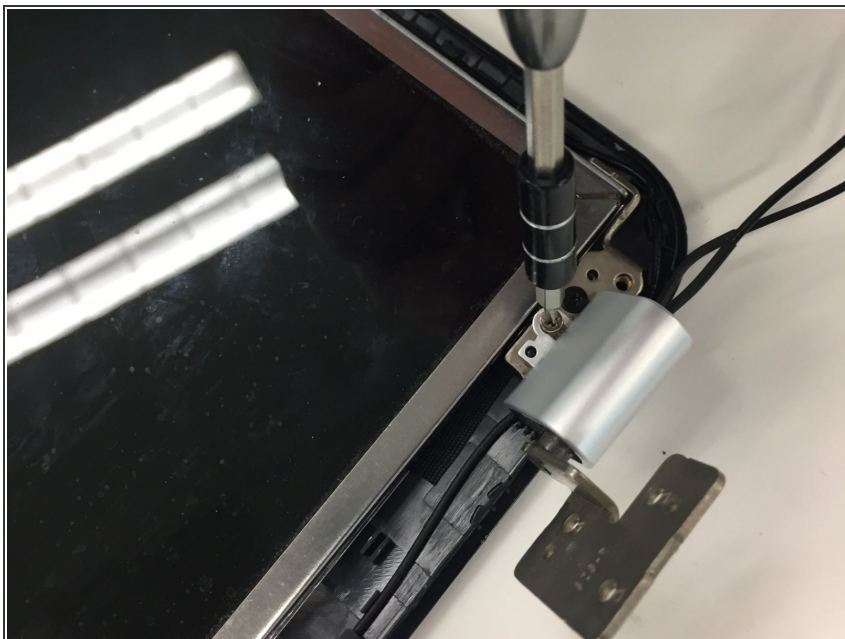
- Remove the sticky tabs on the bottom of the screen just outside the hinges, and remove the two screws underneath.

Step 16



- Pry off the plastic surrounding the screen with any flat metal tool.

Step 17



- Remove the screws holding the hinge covers in place.
- Remove the hinge covers.

Step 18



- Use a pair of pliers to unscrew the nut and pull out the hinge.

To reassemble your device, follow these instructions in reverse order.