



Disassembling General Electric Telephone 2-9710A Handset

This is a streamlined guide on how to...

Written By: Alles Rebel



INTRODUCTION

This is a streamlined guide on how to disassemble General Electric Telephone 2-9710A Handset. The tools needed are the Fixit Opening Tool and a Phillips #1 Screwdriver. There are many parts at risk of being damaged, ensure that you follow the procedure with care. The time needed to complete this procedure is approximately fifteen to thirty minutes.

TOOLS:

Phillips #1 Screwdriver (1)

iFixit Opening Tool (1)

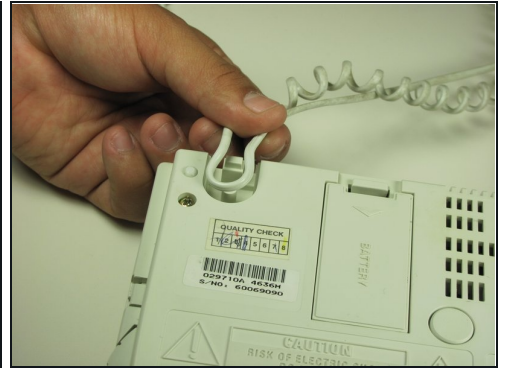
Step 1 — Phone Cord



 **Unplug the device before proceeding.**

- Using a plastic opening tool, remove the phone cord from the phone jack at the base of the headset.
- ① To release the cable, gently press down on the top plastic tab of the connector.

Step 2



- Remove the 7.5 mm screw.
- Remove the screw cap.
- Pull up the phone cord to remove it from the base.

Step 3 — General Electric Telephone 2-9710A Handset



- Remove the plastic cover with a plastic opening tool by gently sliding the tool underneath the plastic and pry the cover off.

Step 4



- Remove the paper with a plastic opening tool by gently sliding the tool underneath and prying the paper away from the phone.

Step 5



- Remove the rubber stopper with a plastic opening tool by gently sliding the tool underneath and pry away from the phone.

Step 6



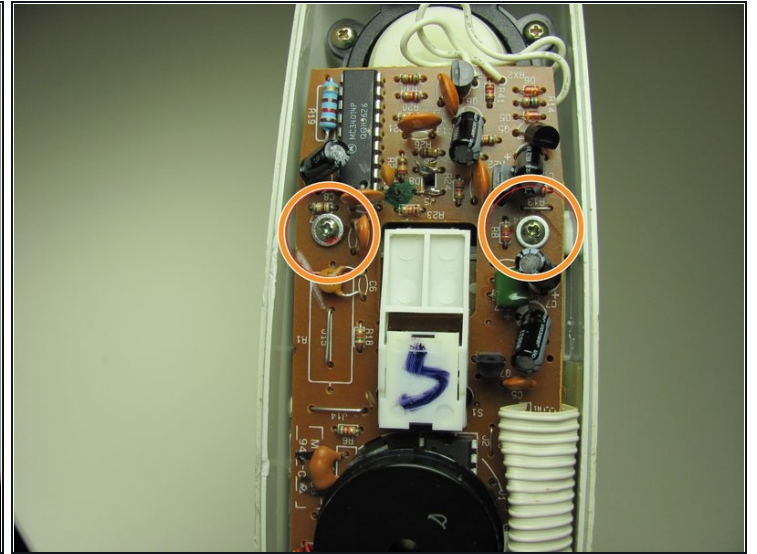
- Remove the two 2.1 mm screws with a Phillips #1 screwdriver.

Step 7



- Pull apart the handset by pulling the top shell away from the other half of the phone.

Step 8



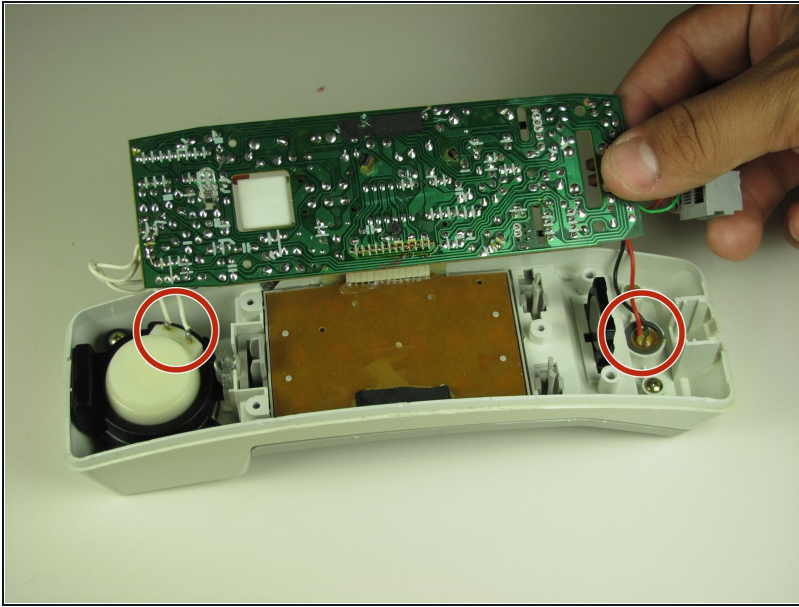
- Remove 3 screws attaching the motherboard to shell.
 - Remove the 13 mm screw with a Philips #1 screwdriver.
 - Remove the two 13 mm screws with washers with a Philips #1 screwdriver.

Step 9



- Slide the phone jack out from the shell by gently lifting up the female phone jack connector.

Step 10



- Without removing the motherboard completely, pull up slightly and pivot the motherboard out of the shell.

⚠ Be careful not to pull the connectors out.

To reassemble your device, follow these instructions in reverse order.