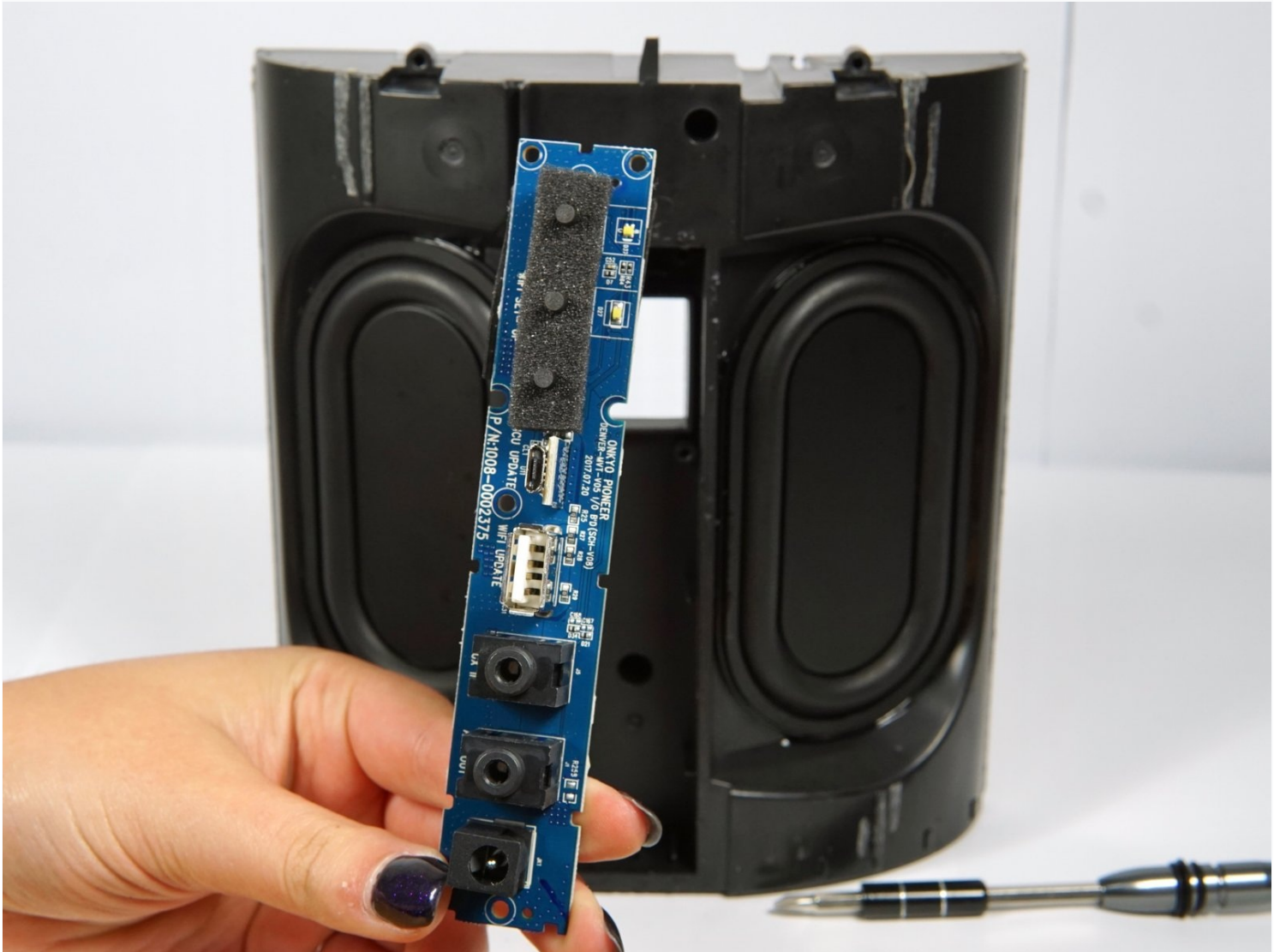




Pioneer Elite Smart Speaker F4 I/O Port Replacement

The Smart Speaker has a back panel where the...

Written By: Cody Kremer



INTRODUCTION

The Smart Speaker has a back panel where the speaker's jacks and other ports are located. The panel is replaced as a unit. To access the box, we are going to need to take apart the entire inside of the speaker. Please note that replacing this part requires the speakers casing to be damaged.

TOOLS:

Phillips #2 Screwdriver (1)

Utility Knife (1)

Tweezers (1)

Phillips #1 Screwdriver (1)

Step 1 — Fabric Casing



- Flip the speaker upside down with the back panel of plugs pointed away from you.

Step 2



- Use the metal spudger to pry off the rubber bottom cover. It will be glued onto the bottom of the speaker.
- Work the rubber cover off by slowly going all the way around with the metal spudger, applying as much force as needed.
- ① Since the cover is glued, a heat gun at low temperature or a hair dryer may be useful to speed up the process. However it is not required in this step.

Step 3



- Scrape most of the glue away to reveal the five flathead screws - four around the outside, and one in the middle.

Step 4



- Remove the five 6 mm screws with a Phillips #2 screwdriver.

Step 5



- Lift off the metal plate. It will be surprisingly heavy and it is approximately 1cm thick.

Step 6



⚠ This step requires permanently damaging the casing of your device.

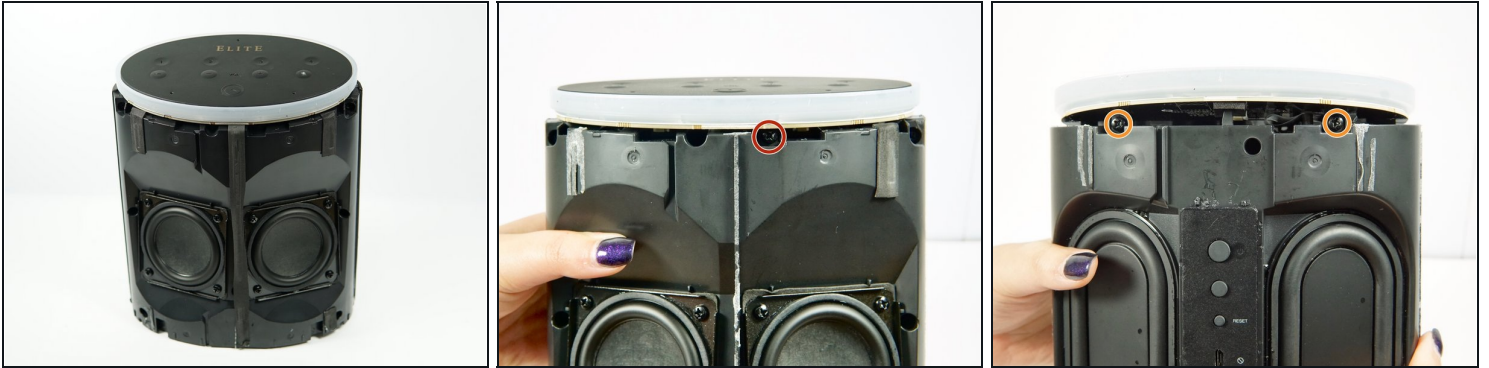
- Turn the speaker counter-clockwise 90 degrees.
- Use a knife to cut along the left seam all the way down the length of the device.

Step 7



- The casing should be easily removed by prying and lifting it off.
- ⓘ If the casing gets caught on the back panel of plugs, use the metal spudger to lift the casing away from the panel, working all the way around. Pay special attention to the bottom, where it may be stuck with glue.

Step 8



- Flip device 180 degrees so the light ring/button panel is on top with the 'Elite' facing you.
- Remove one 6 mm screw with a Phillips #2 screwdriver.
- Spin the device so the opposite side is facing you.
- Remove the two 6 mm screws with a Phillips #2 screwdriver.

Step 9



- Carefully remove the top panel, light ring, button panel, and the corresponding board.

⚠ Do not pull too hard, as there is a strip of wiring connected to the part below that could tear if pulled too hard or too far away.

Step 10 — Motherboard



- Peel off all rubber strips along sides, middle front and middle back of the device.

Step 11



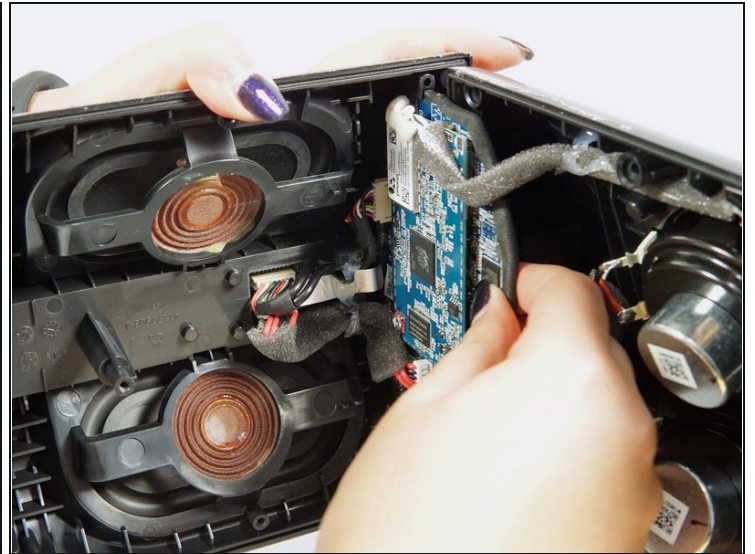
- Remove the eight 6 mm screws using the Phillips #2 screwdriver.

Step 12



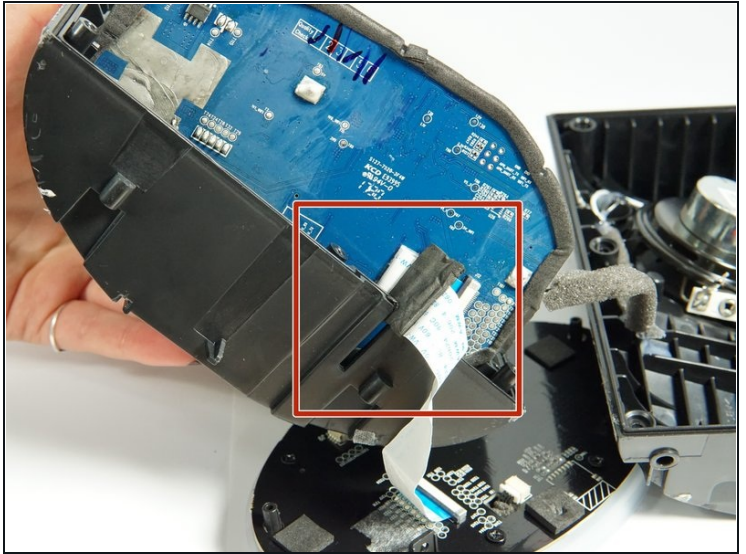
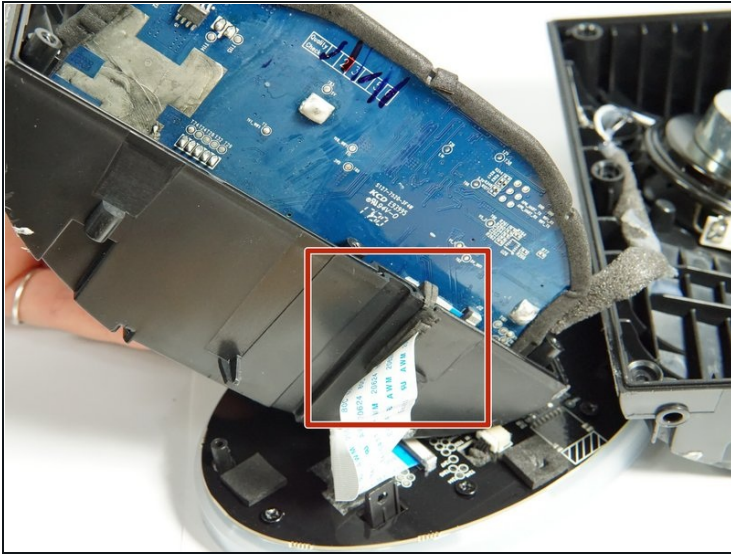
- Pry apart the two sides carefully. The halves will not be able to separate completely because of wires and the motherboard.

Step 13



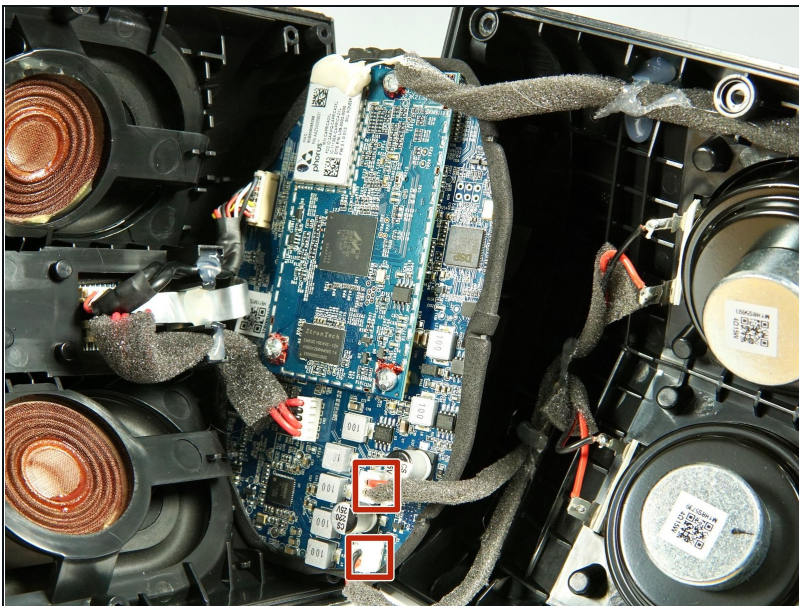
- Slide the motherboard out using your hands.

Step 14



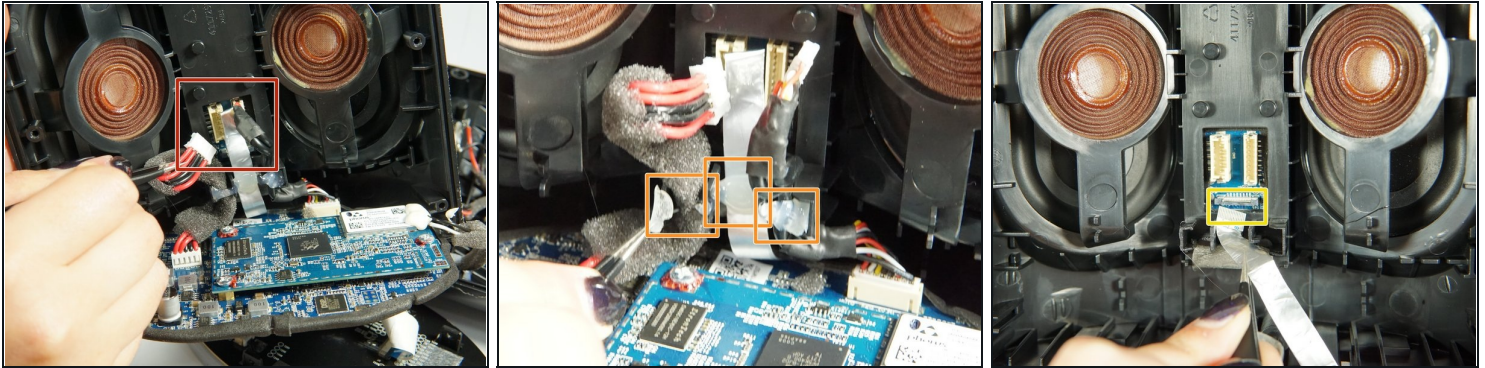
- Slide out ribbon-like wire at the bottom of the speaker using your hands.

Step 15



- Remove two of the wire connectors with your hands or with [tweezers](#).

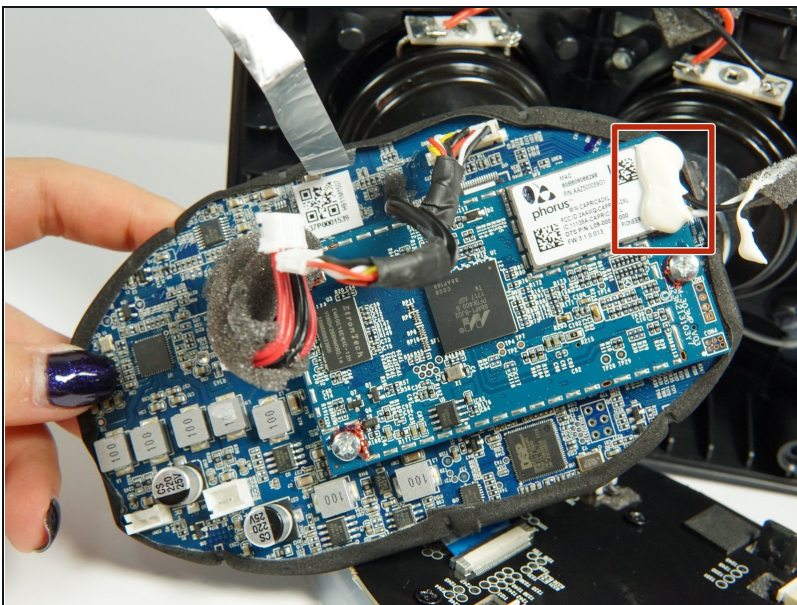
Step 16



- Remove the two wire connectors using tweezers or your fingers. Be careful not to damage the plastic.
- Remove the 3 pieces of hot glue using tweezers. Don't worry about ripping the foam covering the cords.
- Remove the ribbon wire by pulling on it with tweezers.

⚠ Removing this may permanently damage the connector.

Step 17



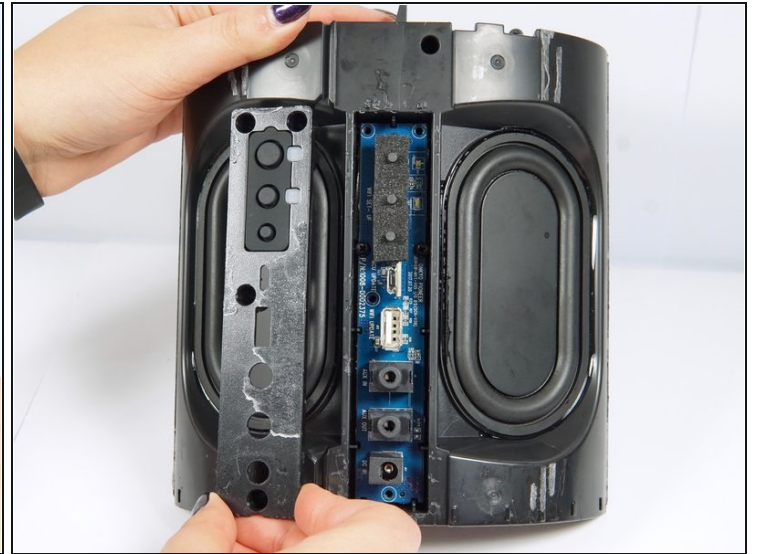
- Peel away the off white glue and disconnect the wires from the motherboard.
- Remove the motherboard from the device.
- ⓘ Disconnecting the wires from the motherboard may require desoldering them.

Step 18 — I/O Port



- Using the metal spudger, peel the backing off of the back panel of the speaker to reveal 4 screw holes.

Step 19



- Remove the four 4 mm screws with a Phillips #2 screwdriver, then lift off the panel.

Step 20



- Remove the two 4 mm screws with a Phillips #1 screwdriver.
- Pull back on the top of the grey foam rectangle to reveal another screw. Remove the one 4 mm screw with a Phillips #1 screwdriver.

Step 21



- Once the screws are removed, remove the panel with your hands.

To reassemble your device, follow these instructions in reverse order.

