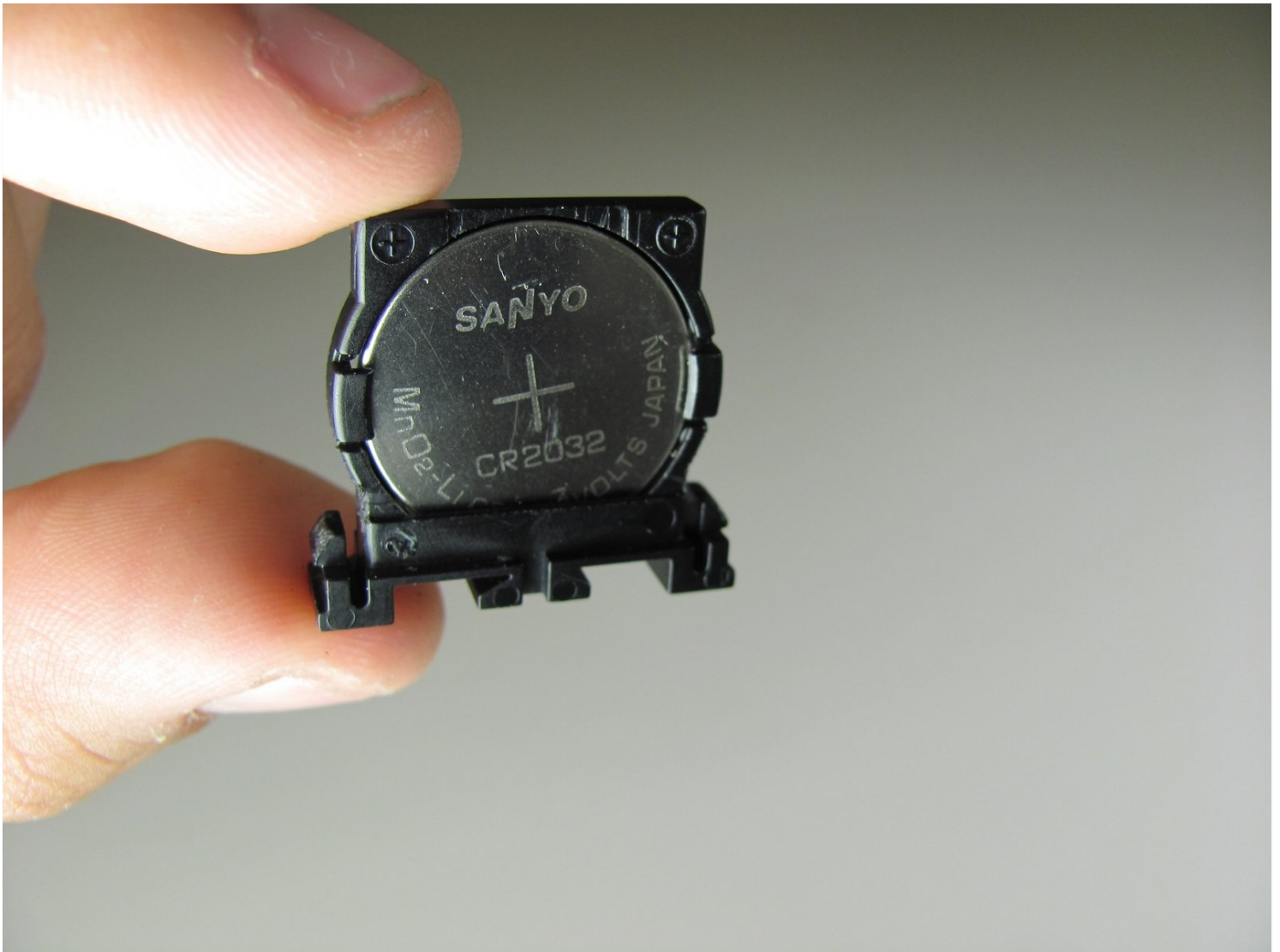




# General Electric Telephone 2-9710A 3V Headset Battery Replacement

Use this guide to replace the internal battery...

Written By: Norberto Sanchez



# INTRODUCTION

Use this guide to replace the internal battery of the handset

## 🔧 TOOLS:

Tweezers (1)  
Phillips #1 Screwdriver (1)  
iFixit Opening Tool (1)

## ⚙️ PARTS:

CR2032 Lithium Battery (1)

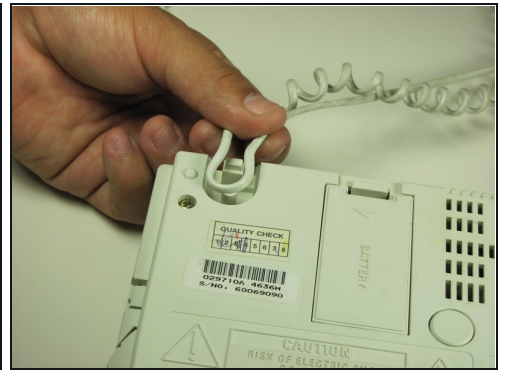
## Step 1 — Phone Cord



⚠️ Unplug the device before proceeding.

- Using a plastic opening tool, remove the phone cord from the phone jack at the base of the headset.
- ① To release the cable, gently press down on the top plastic tab of the connector.

## Step 2



- Remove the 7.5 mm screw.
- Remove the screw cap.
- Pull up the phone cord to remove it from the base.

## Step 3 — General Electric Telephone 2-9710A Handset



- Remove the plastic cover with a plastic opening tool by gently sliding the tool underneath the plastic and pry the cover off.



## Step 4



- Remove the paper with a plastic opening tool by gently sliding the tool underneath and prying the paper away from the phone.

## Step 5



- Remove the rubber stopper with a plastic opening tool by gently sliding the tool underneath and pry away from the phone.

## Step 6



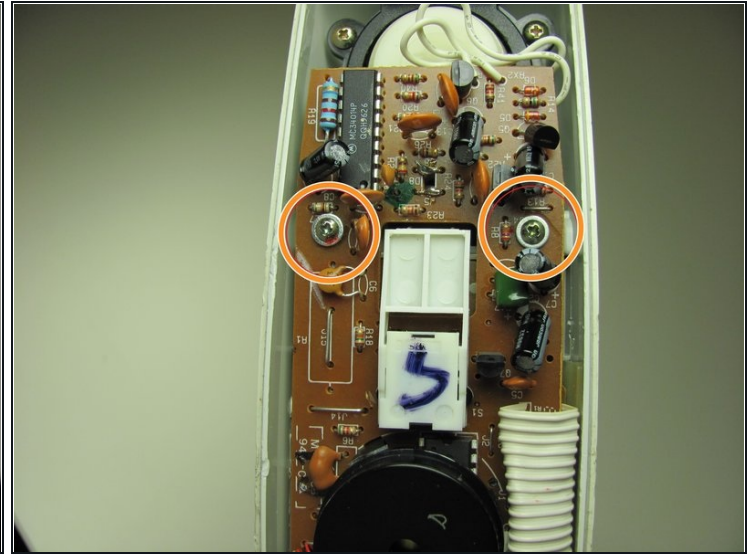
- Remove the two 2.1 mm screws with a Phillips #1 screwdriver.

## Step 7



- Pull apart the handset by pulling the top shell away from the other half of the phone.

## Step 8



- Remove 3 screws attaching the motherboard to shell.
  - Remove the 13 mm screw with a Philips #1 screwdriver.
  - Remove the two 13 mm screws with washers with a Philips #1 screwdriver.

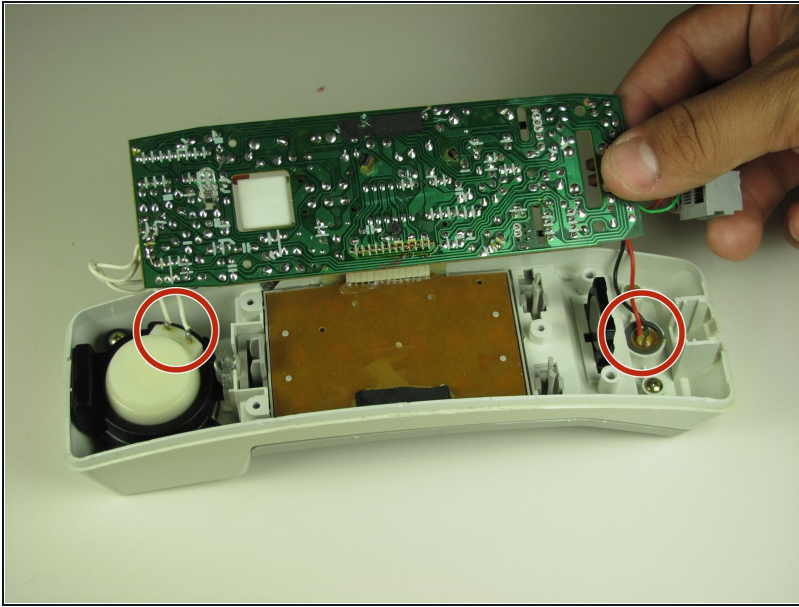
## Step 9



- Slide the phone jack out from the shell by gently lifting up the female phone jack connector.



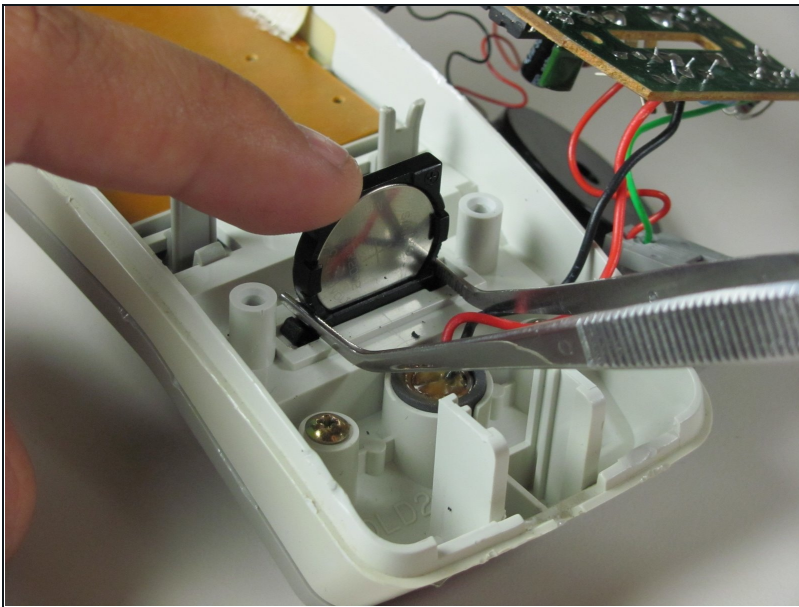
## Step 10



- Without removing the motherboard completely, pull up slightly and pivot the motherboard out of the shell.

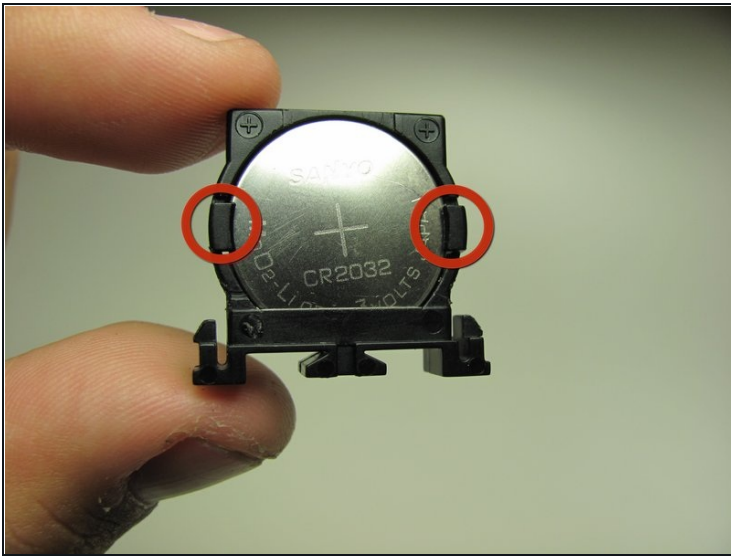
⚠ Be careful not to pull the connectors out.

## Step 11 — 3V Headset Battery



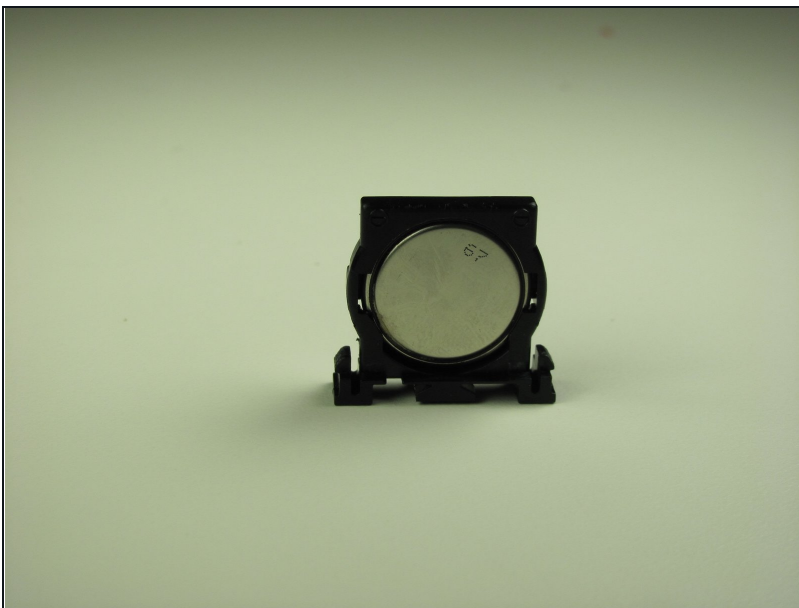
- Use [tweezers](#) to apply pressure on battery holder tabs.
- Apply pressure directly on battery holder to slide it through the shell.
- Battery is going to slide through the bottom.

## Step 12



- Lift tabs on the side of the holder by putting your fingers directly on the tab to pull it apart.
- While holding the battery, remove it from the holder.

## Step 13



- Now insert the new battery.
- Ensure that the positive side of the battery is facing the tabs.

---

To reassemble your device, follow these instructions in reverse order.



