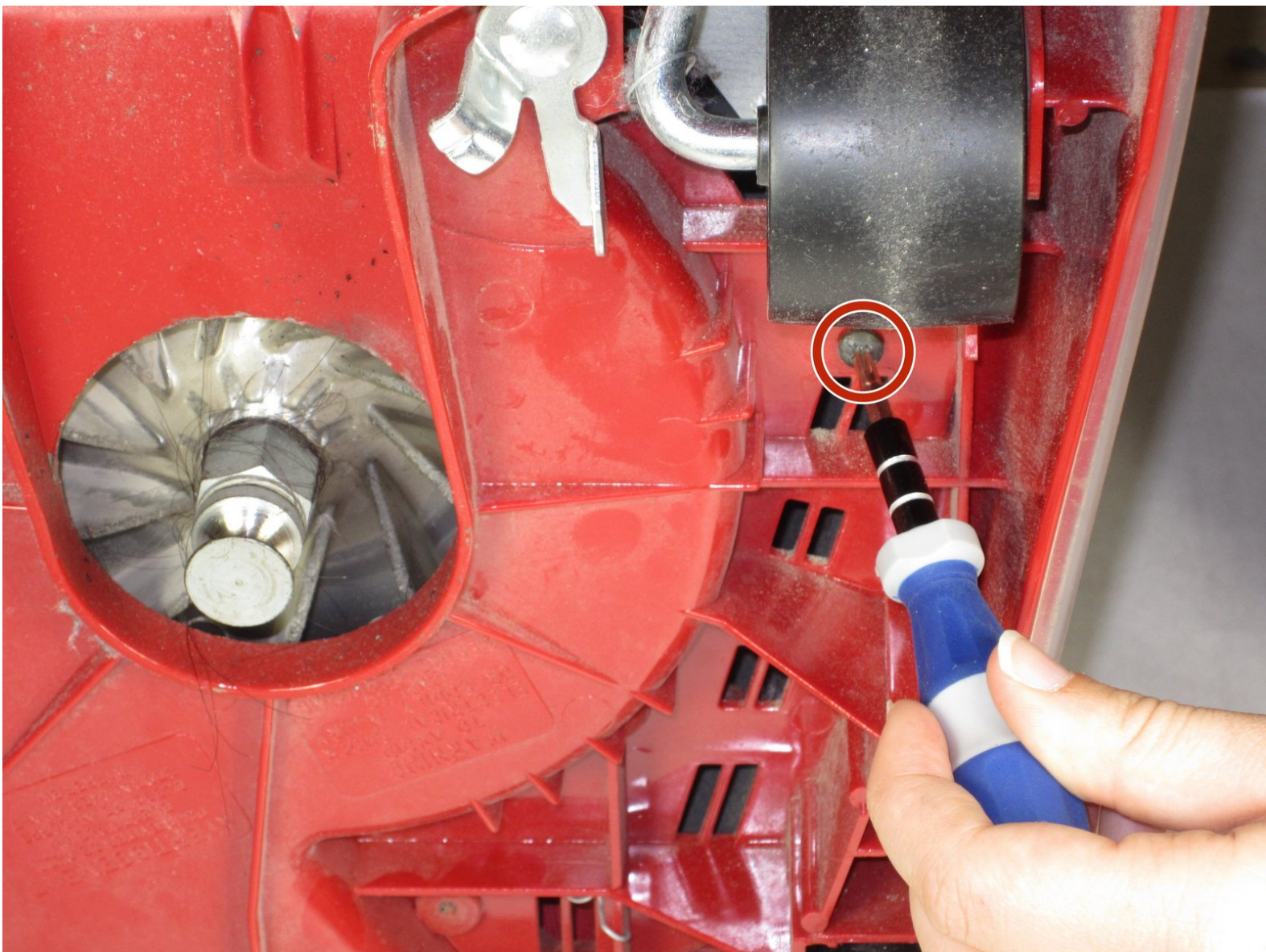




Sanitaire SC684 front wheel replacement

This guide will give step by step instructions on how to remove the front wheels of the Sanitaire SC684.

Written By: Caycie Pascual



INTRODUCTION

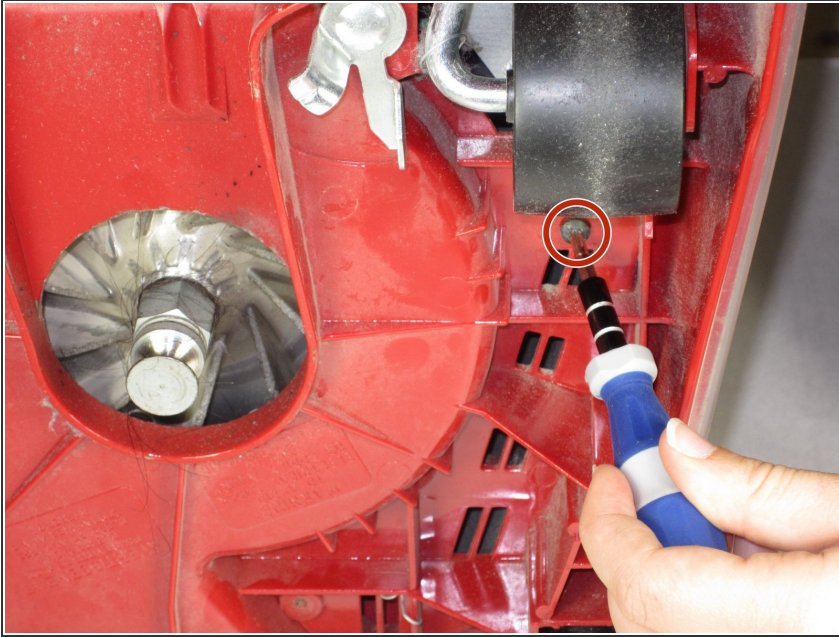
There are many small things we interact with that make our lives easier that we often don't think about, such as the wheels of a vacuum, which can deteriorate over time and need replacing. This guide is for Sanitaire SC684 owners who have found their vacuums front wheels in need of replacing.



TOOLS:

- [Phillips #1 Screwdriver](#) (1)
 - [T20 Torx Screwdriver](#) (1)
-

Step 1 — Front Wheels



- ⚠ Be sure to unplug the vacuum before disassembling it to prevent electric shock.
- Lay the vacuum on its side.
- Using a Phillips #1 screwdriver, unscrew the screws located behind the front wheels on the underside of the vacuum.

Step 2



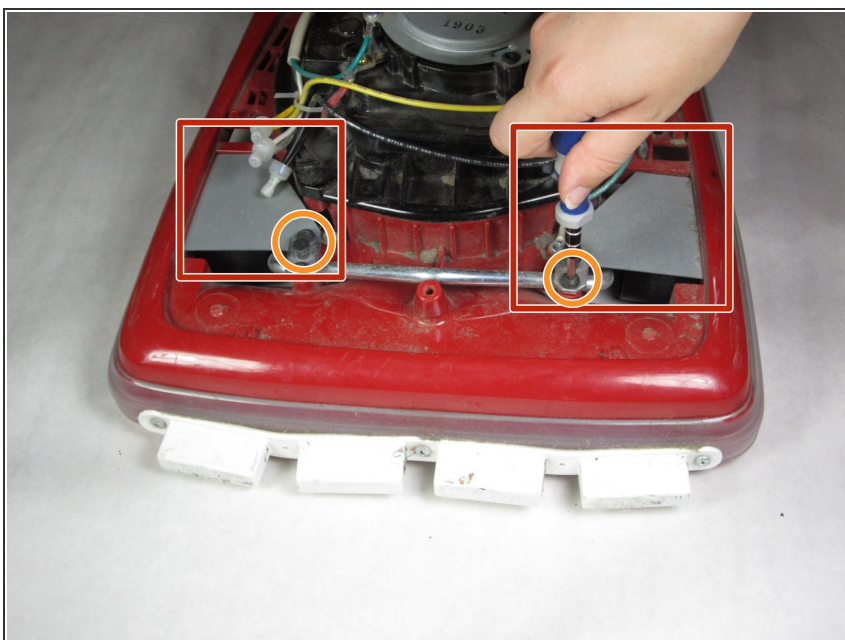
- Stand the vacuum upright, unscrew the single screw located on the center dial using a Torx T20 screwdriver and remove the dial from the vacuum body.

Step 3



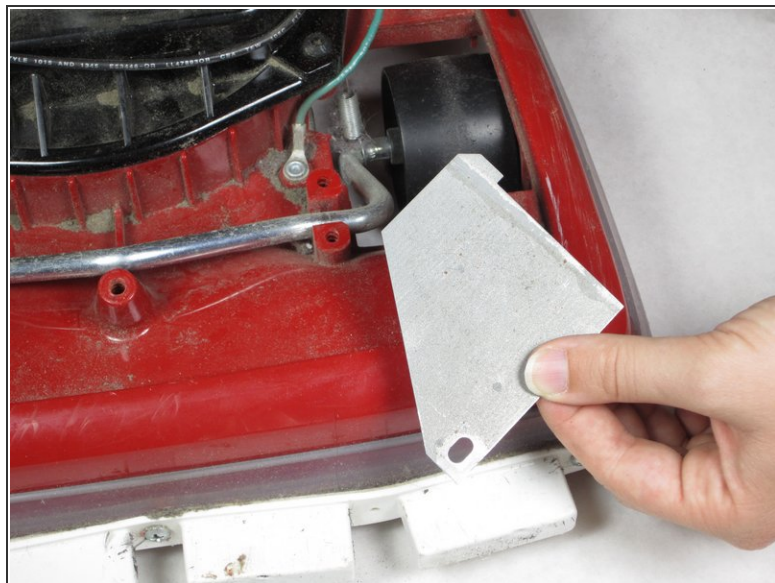
- Lift the top cover off of the vacuum.

Step 4



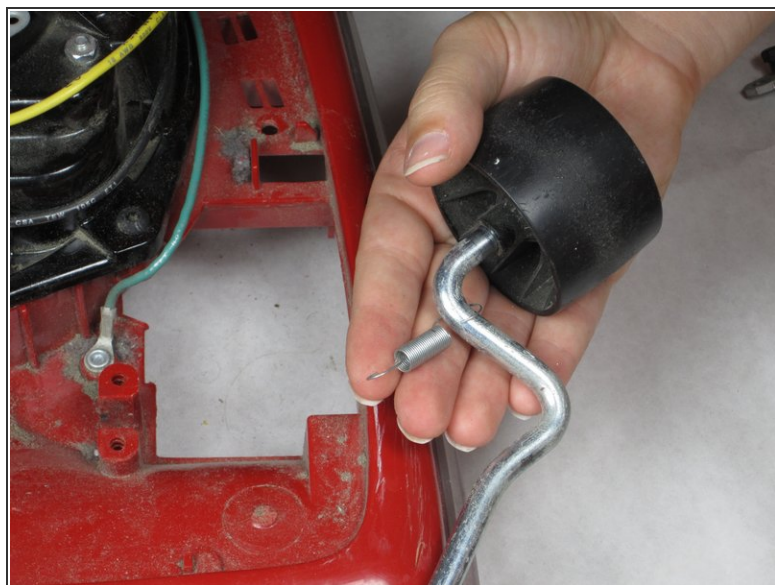
- Identify the two gray metal plates at the front of the vacuum.
- Using the T20 Torx screwdriver, remove the four screws on the smaller gray plate holding the larger gray metal plates.

Step 5



- Remove the small metal plate with the black bolt in the center and the larger gray plate from both sides.

Step 6



- Pull out the silver bar that holds the two wheels to the vacuum body and detach the small spring from the vacuum body.

Step 7



- Remove the wheel from the side with the spring by pulling it off the axel and slide off the spring, as it will be needed for the replacement front wheels.

To reassemble your device, follow these instructions in reverse order.