



Panasonic Compact Shaver ES4815 Motor Replacement

A fix guide to replace the motor for a Panasonic Compact Shaver ES4815 in a few easy steps.

Written By: muhammad samsulsham



INTRODUCTION

Is your shaver not working even when its batteries have been replaced? if so, here is the guide to fix the problem by replacing the motor. All you need is a standard Phillips Screwdriver to remove two screws during the replacement.



TOOLS:

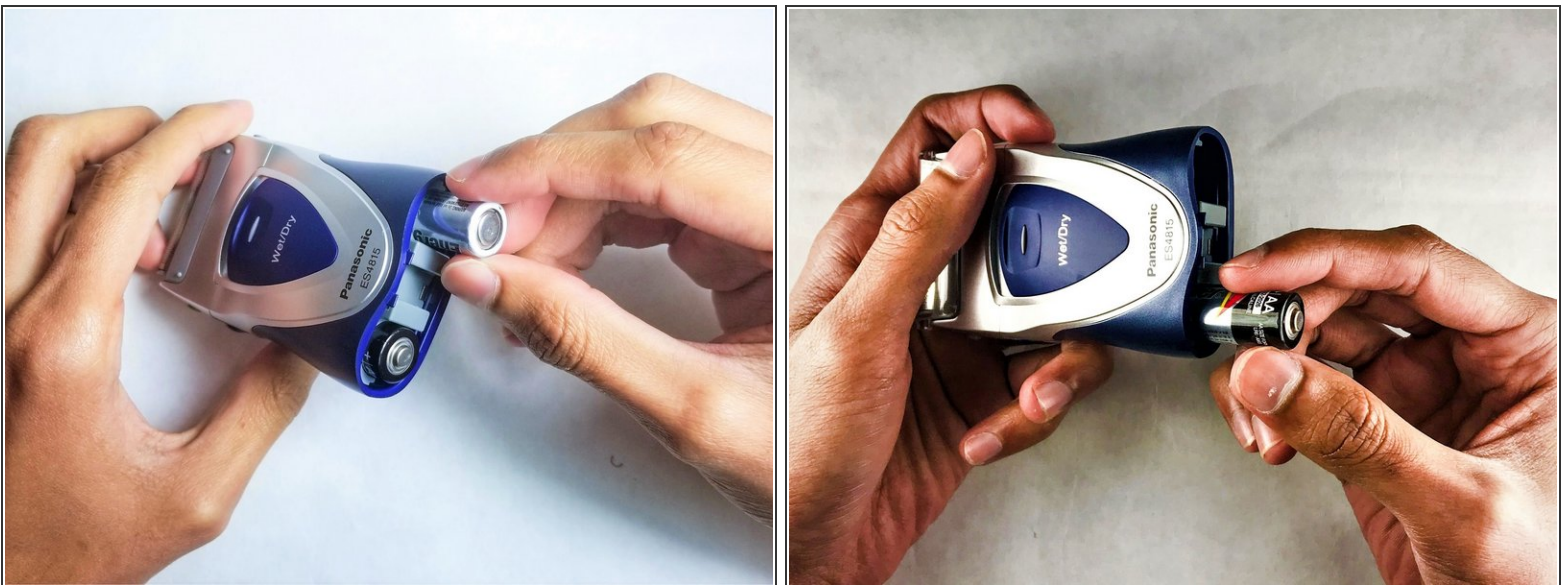
- [Phillips #0 Screwdriver](#) (1)
PH0
-

Step 1 — Battery



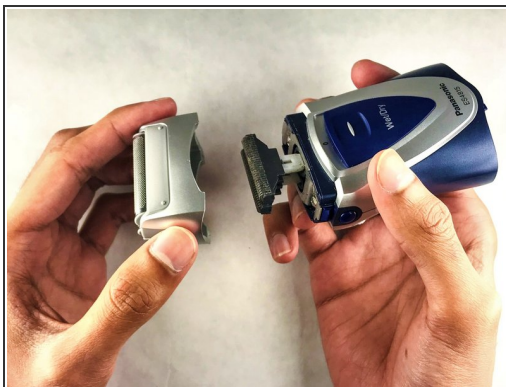
- Twist the release cap to expose the batteries.

Step 2



- Remove the batteries.

Step 3 — Motor



- Remove the razor guard by pushing its release buttons and pulling.

Step 4



- Carefully pull out the inner blades.

Step 5



- Remove the two 1.9mm Phillips #0 screws from the inner blades.

Step 6



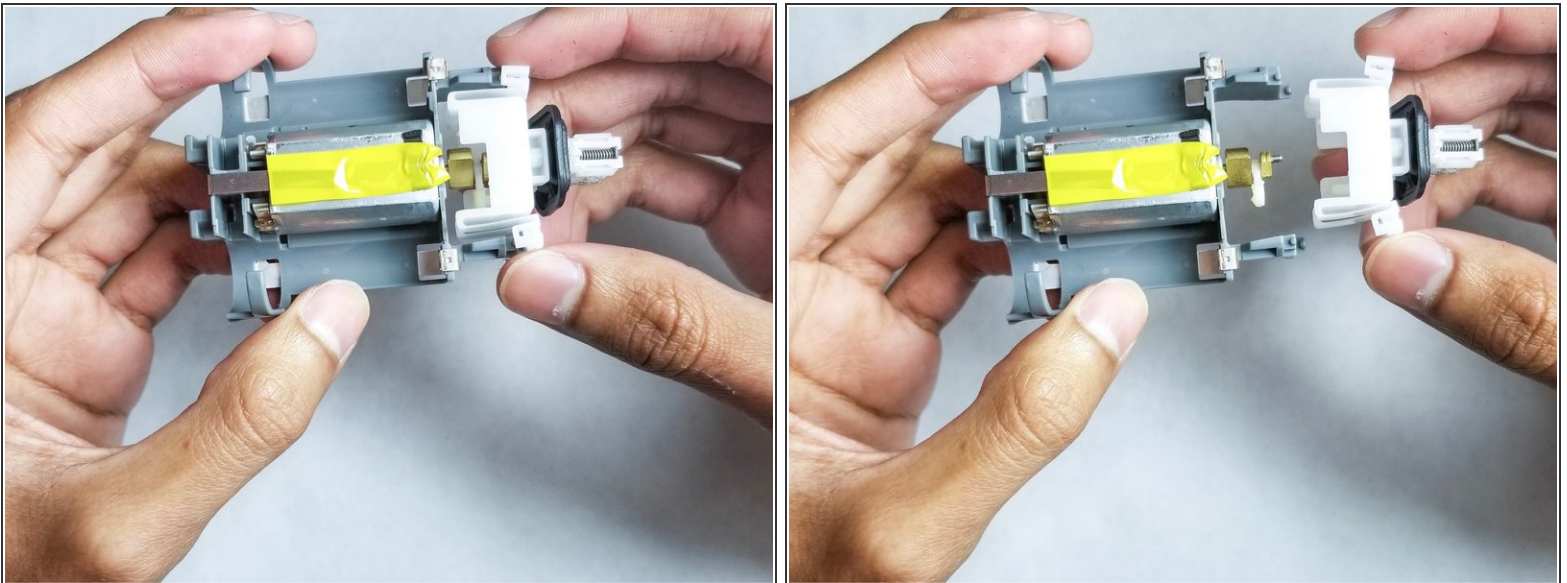
- Remove the metal plate.

Step 7



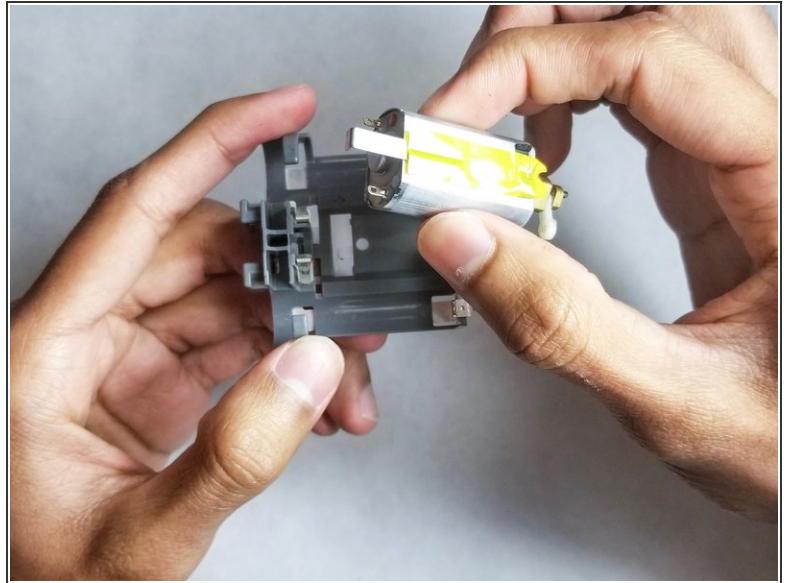
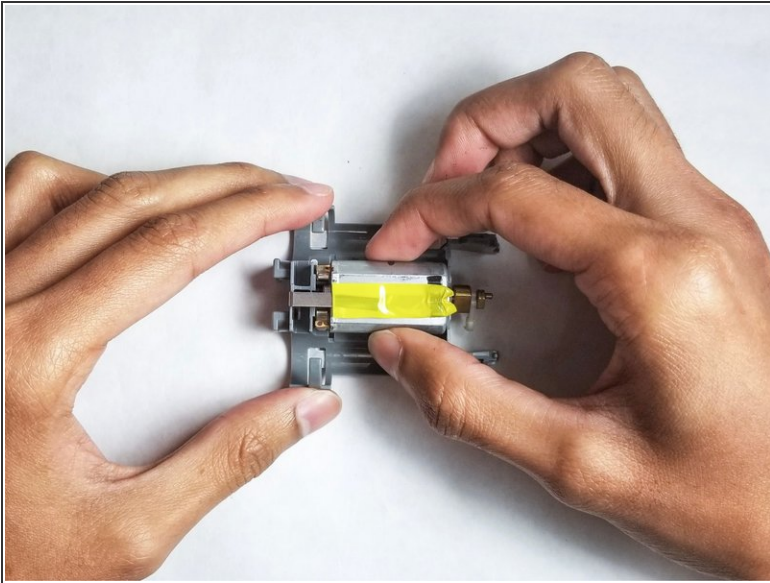
- Pull the outer casing with one hand while holding the inner battery casing with the other hand.

Step 8



- Detach the white plastic blade base from the tip of the motor by pulling it.

Step 9



- Detach motor from gray plastic holder by pulling it.

To reassemble your device, follow these instructions in reverse order.