



# Dell Inspiron 14R 5420 Display Assembly Replacement

Written By: Terrence15



---

## INTRODUCTION

In this guide, we will be showing you how to remove and replace the Display Assembly.



### TOOLS:

- [Phillips #0 Screwdriver](#) (1)
-

## Step 1 — Close the Display



**⚠ WARNING:** Before working inside your computer, read the safety information that shipped with your computer and follow the steps in ["Before You Begin"](#).

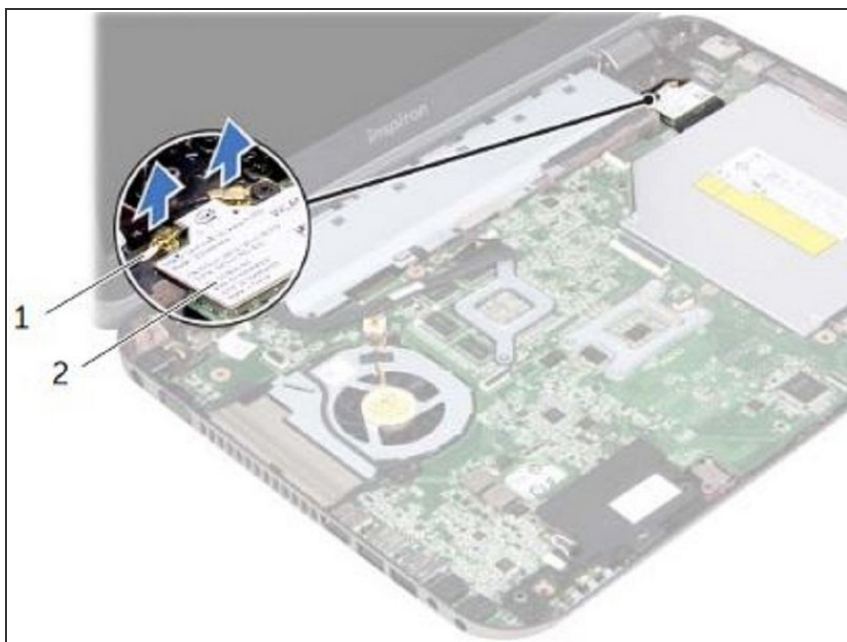
- Close the display and turn the computer over.

## Step 2 — Remove the Screws



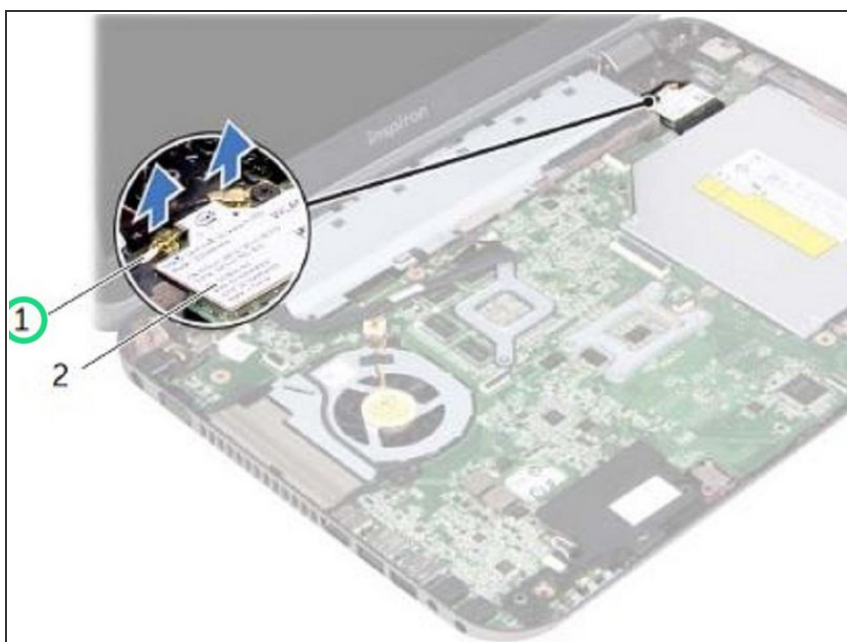
- Remove the screws that secure the display assembly to the computer base.

### Step 3 — Open the Display



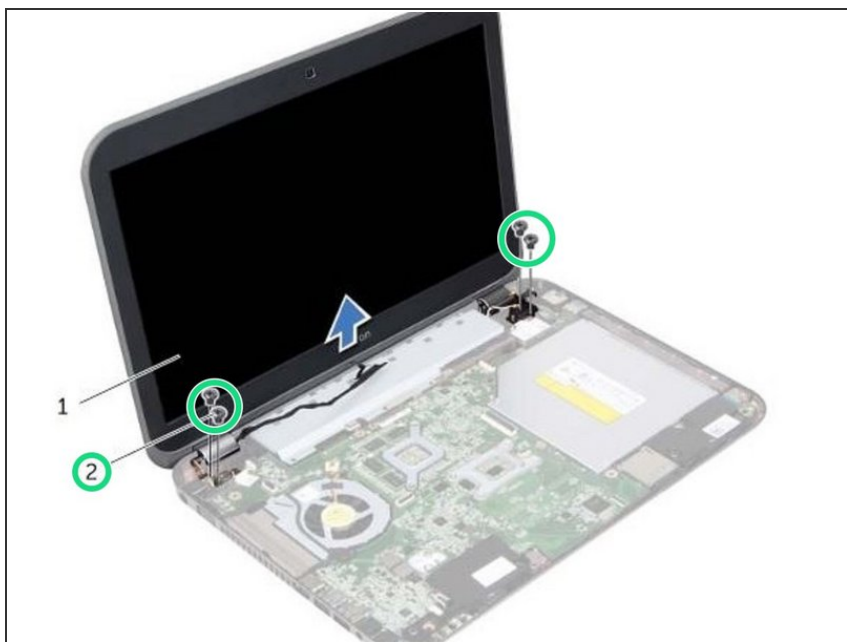
- Turn the computer over and open the display as far as possible.

### Step 4 — Disconnecting the Antenna Cables



- Disconnect the antenna cables from the connectors on the Mini-Card.

## Step 5 — Remove the Screws



- Remove the screws that secure the display assembly to the computer base.

## Step 6 — Removing the Display Assembly



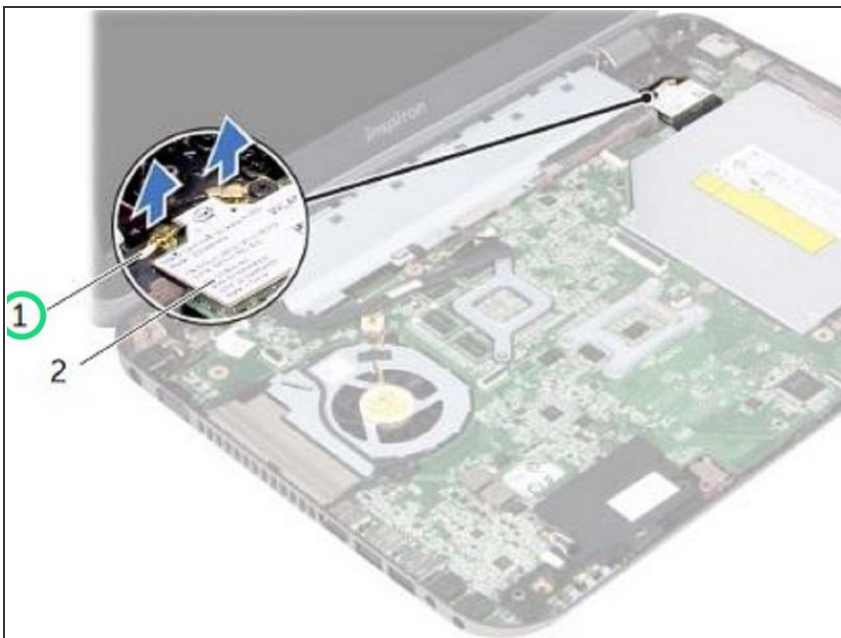
- Lift the display assembly off the computer base.

## Step 7 — Placing the Display Assembly



- Place the **NEW** display assembly in position and replace the screws that secure the display assembly to the computer base.

## Step 8 — Connecting the Antenna Cables



- Connect the antenna cables to the connectors on the Mini-Card.



## Step 9 — Close the Display



- Close the display and turn the computer over.

## Step 10 — Replace the Screws



- Replace the screws that secure the display assembly to the computer base.