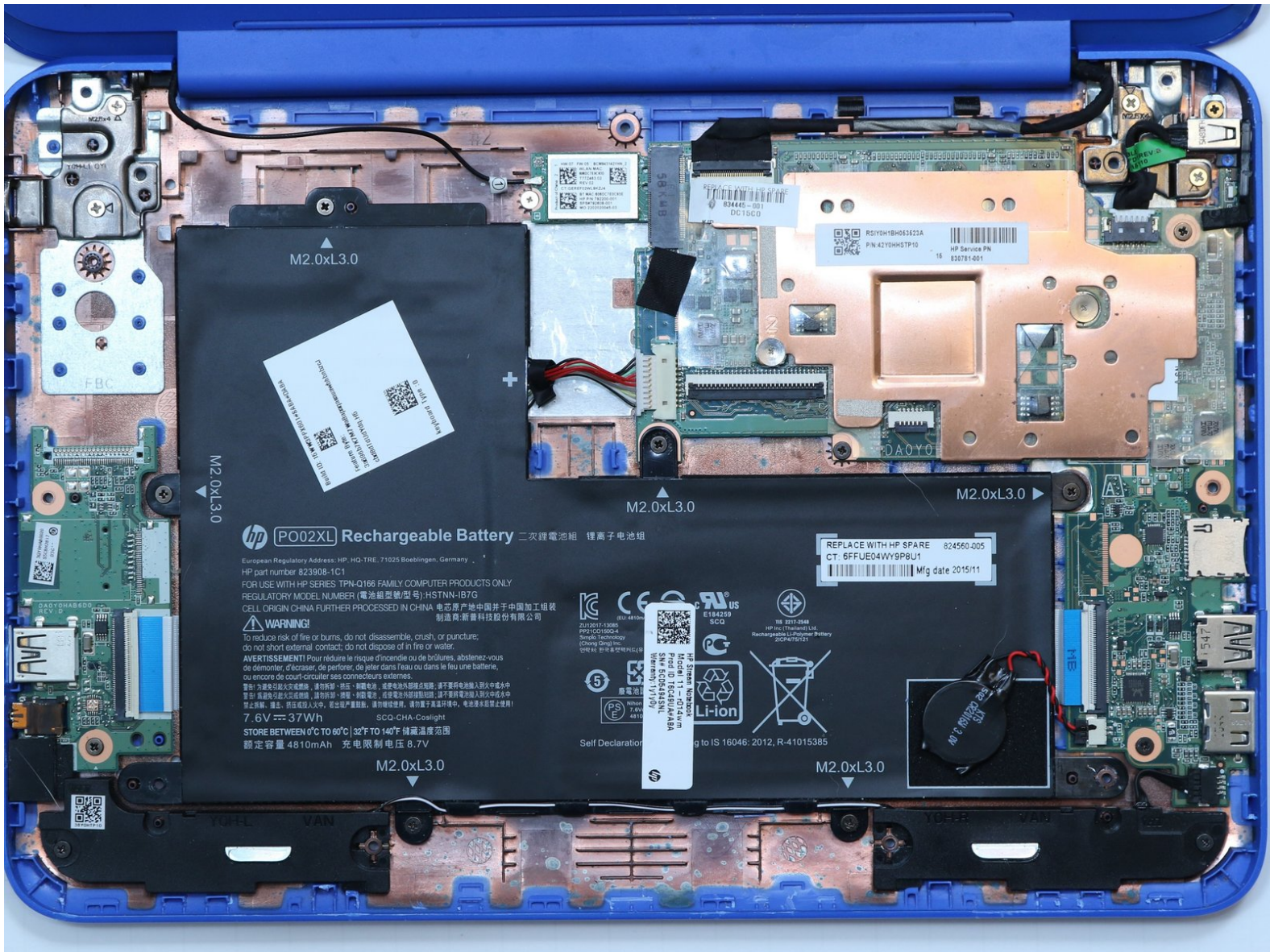




# HP Stream 11-r014wm Battery Replacement

Computer not holding a charge? Tired of looking...

Written By: Anthony R Cardinali



# INTRODUCTION

Computer not holding a charge? Tired of looking for outlets everywhere you go? Change your HP Stream battery!



## TOOLS:

- [Spudger](#) (1)
- [Phillips #00 Screwdriver](#) (1)
- [Tweezers](#) (1)



## PARTS:

- [HP PO02XL Stream 11 Pro G4 Laptop Battery](#) (1)

## Step 1 — Battery



- Use a plastic spudger to remove two oblong screw covers on the bottom of the computer.
  - Use a plastic spudger to remove four rubber feet.
- i** To remove the feet you must break the glue seal holding them down.

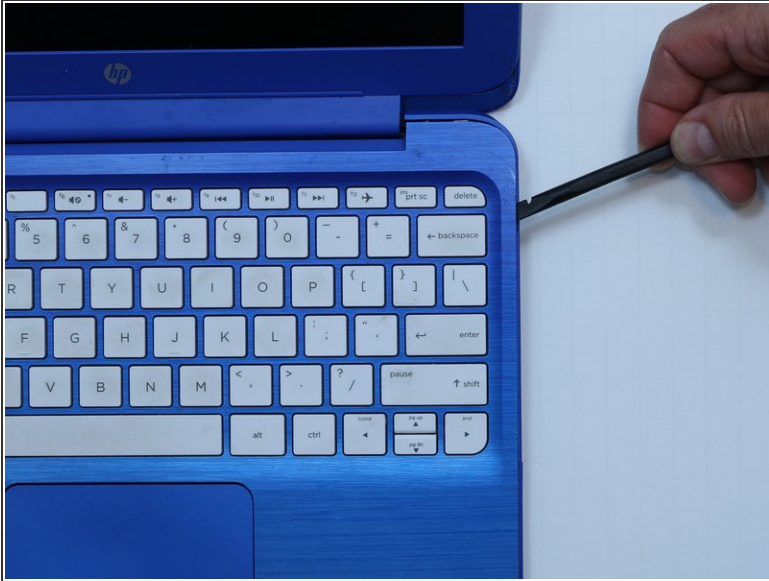
## Step 2



- Remove the eleven 5 millimeter housing screws from the bottom of the computer using a #00 Phillips head screwdriver.



## Step 3

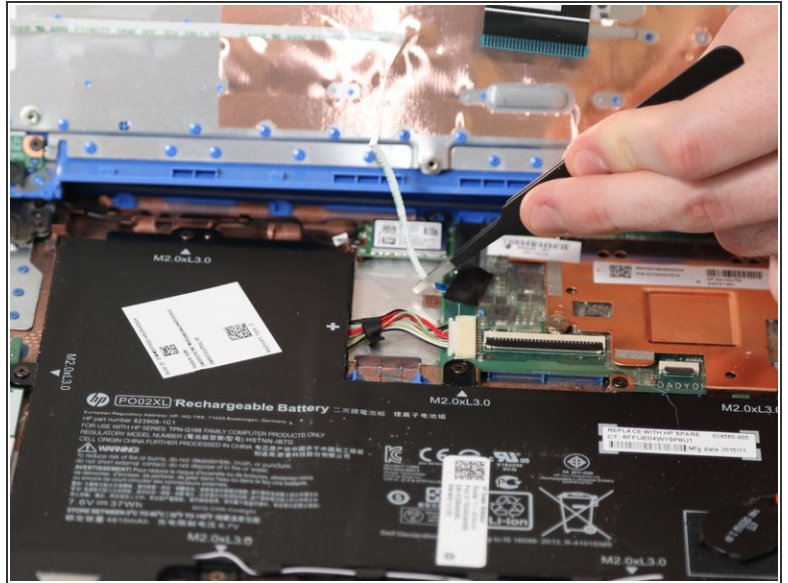
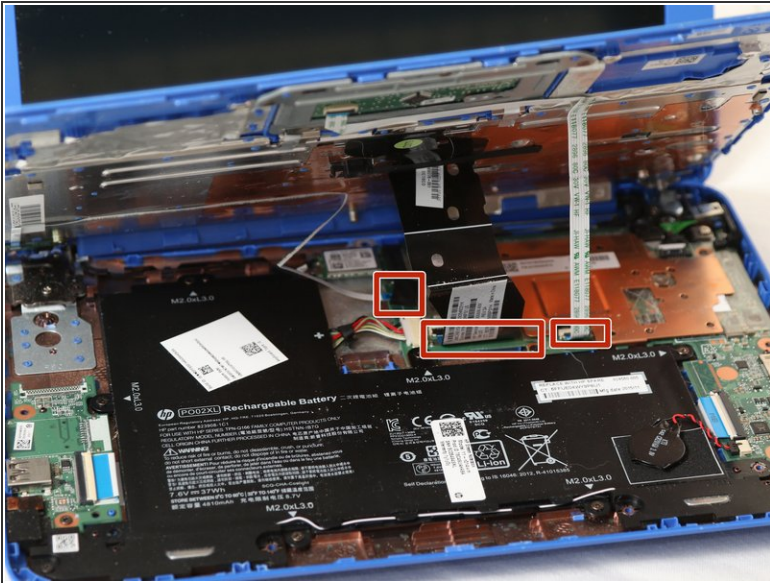


- Turn the computer over and open it.
- Use a plastic spudger to pry the keyboard bezel away from the base. Pry around the edge, being careful not to jam the spudger too far underneath the bezel (potentially damaging internal components).

 The bezel is tightest near the hinge.

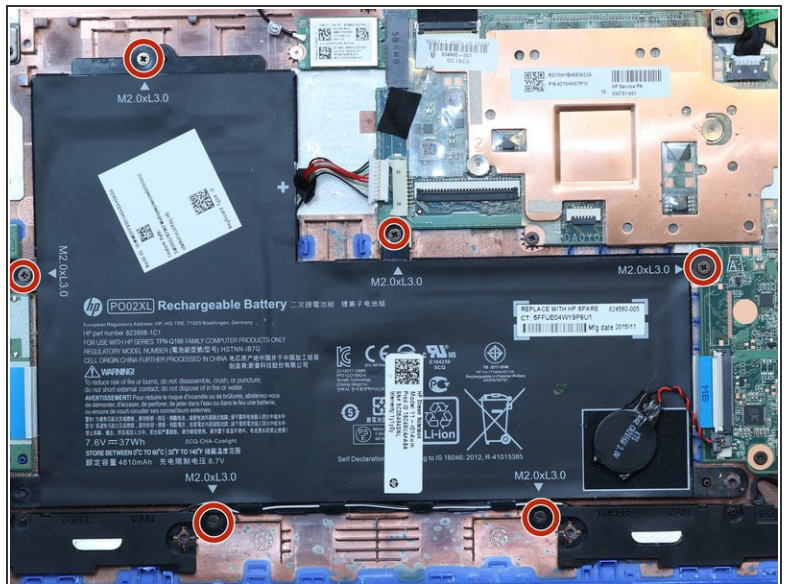
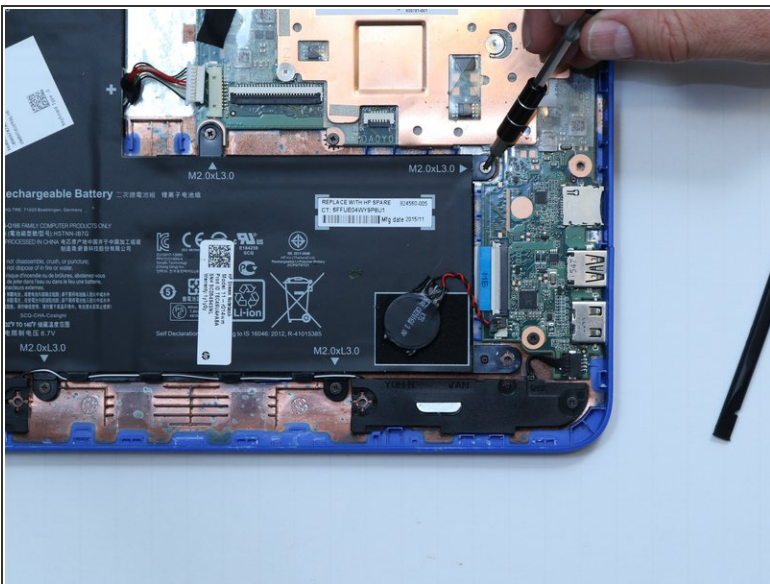
 Once the bezel is free, do not lift it away from the base.

## Step 4



- Identify two ribbon connectors and the ZIF cable underneath the keyboard.
- Use tweezers to disconnect both ribbon cables and the ZIF connector.

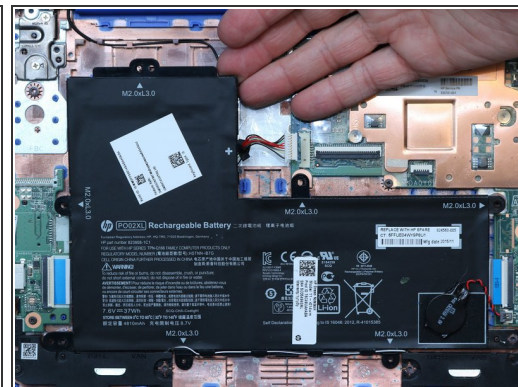
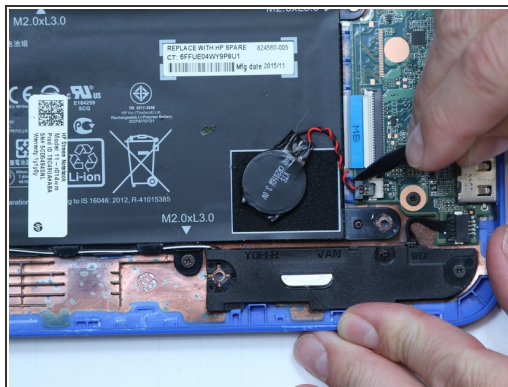
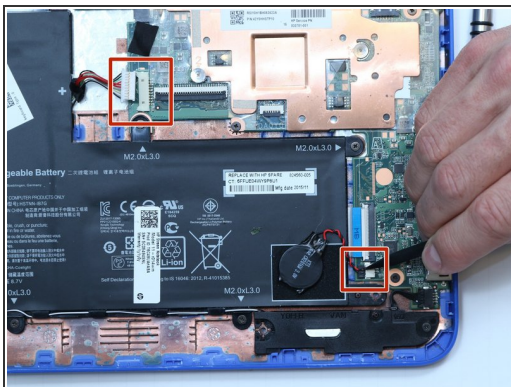
## Step 5



- Use a Phillips #00 screwdriver to remove six 5 millimeter screws from the battery.



## Step 6



- Use a plastic spudger to remove the two power connectors.
- Lift the battery out.

To reassemble your device, follow these instructions in reverse order.